

# DATA SHEET



## Three Phase Induction Motor - Squirrel Cage

Customer :

Product line : ODP High Efficiency Three-Phase Product code : 11996557

Frame	: 254TC	Locked rotor time	: 30s (cold) 17s (hot)
Output	: 15 HP (11 kW)	Temperature rise	: 80 K
Poles	: 4	Duty cycle	: Cont.(S1)
Frequency	: 60 Hz	Ambient temperature	: -20°C to +40°C
Rated voltage	: 575 V	Altitude	: 1000 m.a.s.l.
Rated current	: 15.0 A	Protection degree	: IP23
L. R. Amperes	: 89.8 A	Cooling method	: IC01 - ODP
LRC	: 6.0x(Code G)	Mounting	: F-1
No load current	: 7.20 A	Rotation <sup>1</sup>	: Both (CW and CCW)
Rated speed	: 1765 rpm	Noise level <sup>2</sup>	: 59.0 dB(A)
Slip	: 1.94 %	Starting method	: Direct On Line
Rated torque	: 6.17 kgfm	Approx. weight <sup>3</sup>	: 95.8 kg
Locked rotor torque	: 229 %		
Breakdown torque	: 250 %		
Insulation class	: F		
Service factor	: 1.15		
Moment of inertia (J)	: 0.0652 kgm <sup>2</sup>		
Design	: B		

Output	50%	75%	100%	Foundation loads	
Efficiency (%)	89.5	91.0	91.0	Max. traction	: 194 kgf
Power Factor	0.63	0.75	0.81	Max. compression	: 290 kgf

		<u>Drive end</u>	<u>Non drive end</u>
Bearing type	:	6309 Z C3	6209 Z C3
Sealing	:	Without Bearing Seal	Without Bearing Seal
Lubrication interval	:	20000 h	20000 h
Lubricant amount	:	13 g	9 g
Lubricant type	:	Mobil Polyrex EM	

### Notes

This revision replaces and cancel the previous one, which must be eliminated.

- (1) Looking the motor from the shaft end.
- (2) Measured at 1m and with tolerance of +3dB(A).
- (3) Approximate weight subject to changes after manufacturing process.
- (4) At 100% of full load.

These are average values based on tests with sinusoidal power supply, subject to the tolerances stipulated in NEMA MG-1.

Rev.	Changes Summary	Performed	Checked	Date
Performed by		Page		Revision
Checked by		1 / 2		
Date	01/04/2025			

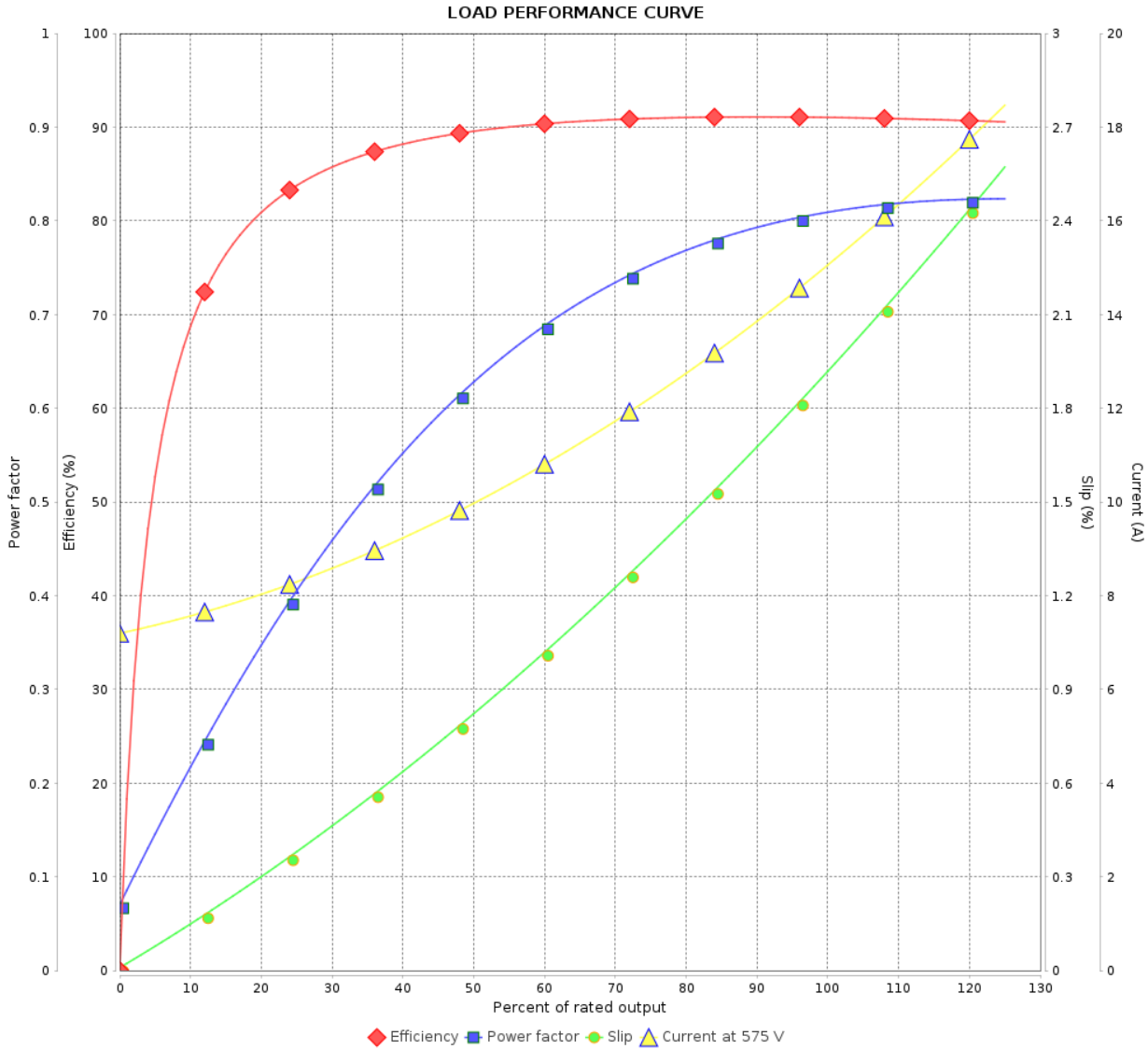
# LOAD PERFORMANCE CURVE

Three Phase Induction Motor - Squirrel Cage



Customer :

Product line : ODP High Efficiency Three-Phase Product code : 11996557

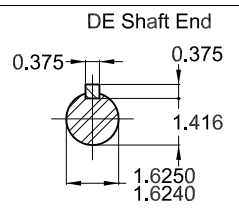
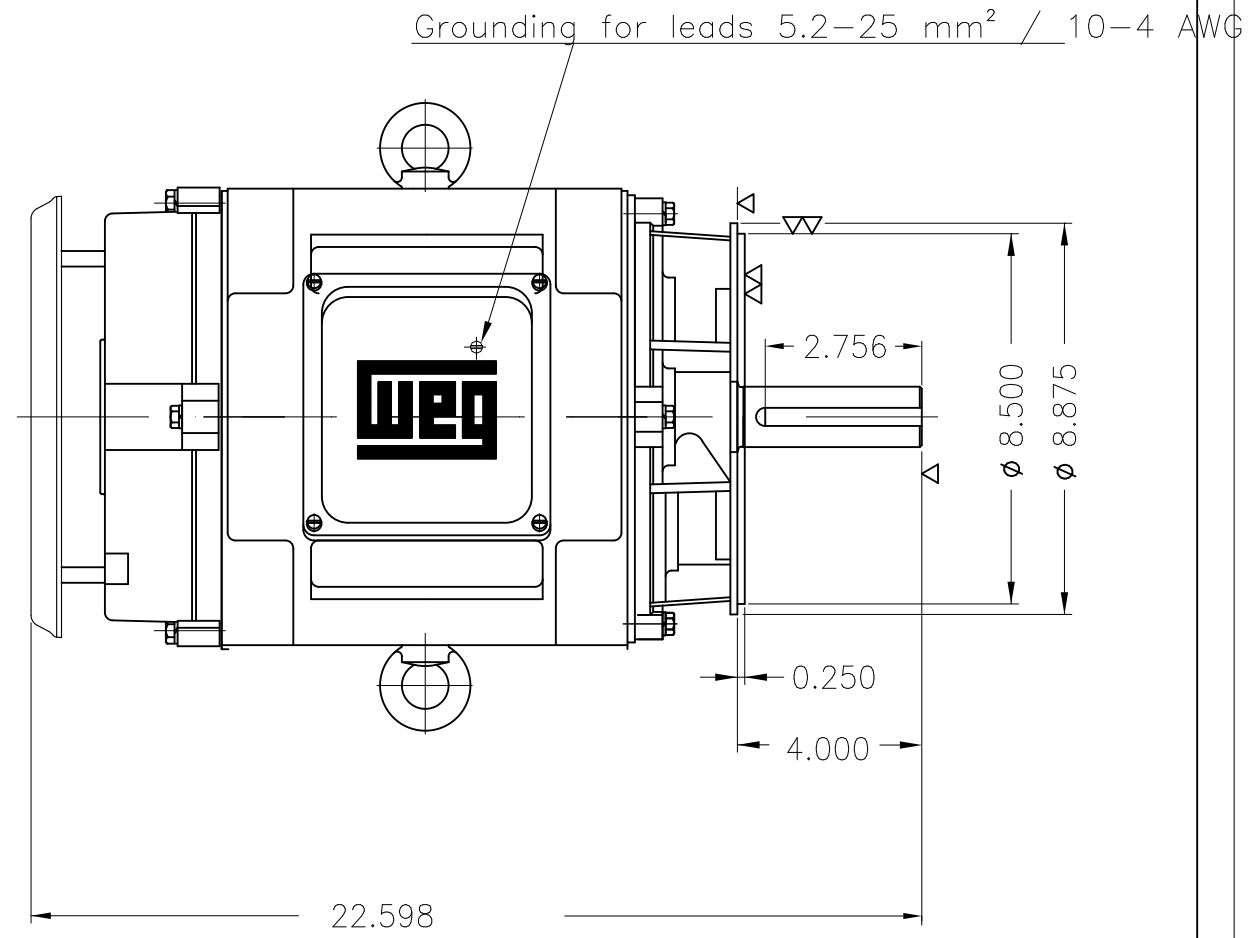
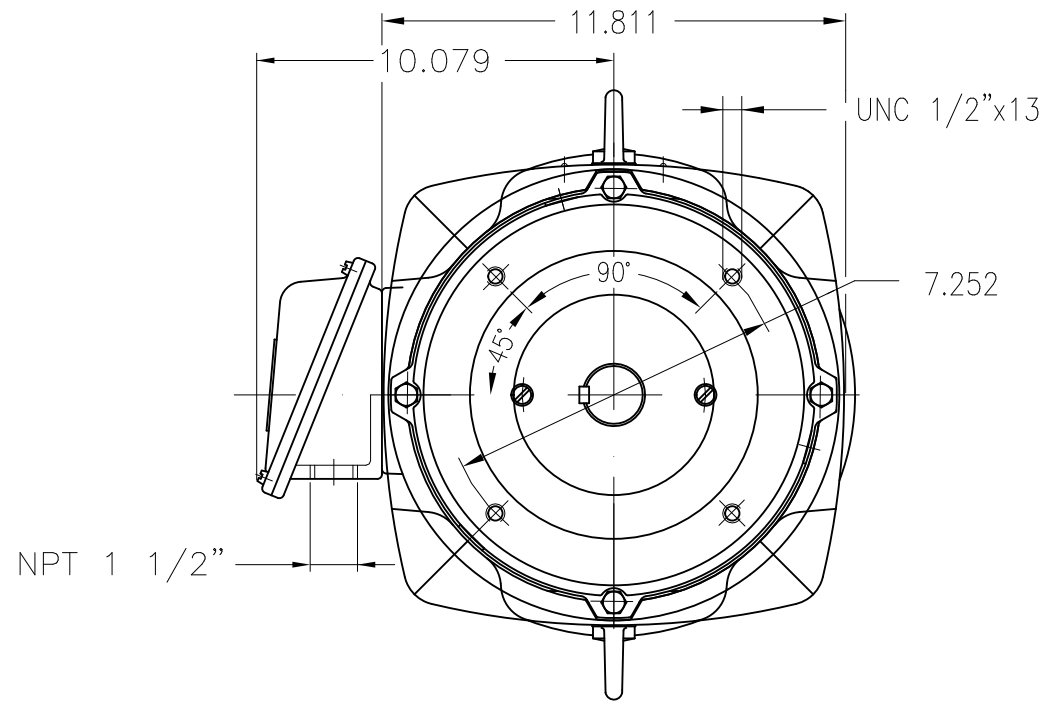


Performance : 575 V 60 Hz 4P

Rated current : 15.0 A  
 LRC : 6.0  
 Rated torque : 6.17 kgfm  
 Locked rotor torque : 229 %  
 Breakdown torque : 250 %  
 Rated speed : 1765 rpm

Moment of inertia (J) : 0.0652 kgm<sup>2</sup>  
 Duty cycle : Cont.(S1)  
 Insulation class : F  
 Service factor : 1.15  
 Temperature rise : 80 K  
 Design : B

Rev.	Changes Summary	Performed	Checked	Date
Performed by			Page 2 / 2	Revision
Checked by				
Date	01/04/2025			



Color RAL 5009  
 Painting plan 203A  
 Mounting B14R(D)

15 HP 04 Poles 60 Hz										A	
HYBRISUSER										00	
ECM	LOC	SUMMARY OF MODIFICATIONS					EXECUTED	CHECKED	RELEASED	DATE	VER
EXECUTED	HYBRISUSER	THREE PH. MOTOR GENERAL HIGH EFF.					EXECUTED				
CHECKED		FRAME 254TC IP23 ODP					EXECUTED				
RELEASED							EXECUTED				
REL. DATE		WMO	Jaragua do Sul	Product Engineering		EXECUTED					

**PREVIEW**  
 WDD | 00  
 SHEET 1 / 1

