

DATA SHEET

Three Phase Induction Motor - Squirrel Cage



Customer :

Product line : W22 NEMA Premium Efficiency Three-Phase Product code : 12438117

Frame	: 143/5T	Locked rotor time	: 32s (cold) 18s (hot)
Output	: 1 HP (0.75 kW)	Temperature rise	: 80 K
Poles	: 4	Duty cycle	: Cont.(S1)
Frequency	: 60 Hz	Ambient temperature	: -20°C to +40°C
Rated voltage	: 575 V	Altitude	: 1000 m.a.s.l.
Rated current	: 1.18 A	Protection degree	: IP55
L. R. Amperes	: 10.1 A	Cooling method	: IC411 - TEFC
LRC	: 8.6x(Code M)	Mounting	: F-1
No load current	: 0.752 A	Rotation ¹	: Both (CW and CCW)
Rated speed	: 1760 rpm	Noise level ²	: 51.0 dB(A)
Slip	: 2.22 %	Starting method	: Direct On Line
Rated torque	: 0.412 kgfm	Approx. weight ³	: 20.0 kg
Locked rotor torque	: 290 %		
Breakdown torque	: 350 %		
Insulation class	: F		
Service factor	: 1.25		
Moment of inertia (J)	: 0.0049 kgm ²		
Design	: B		

Output	50%	75%	100%	Foundation loads	
Efficiency (%)	80.0	84.0	85.5	Max. traction	: 31 kgf
Power Factor	0.55	0.68	0.75	Max. compression	: 51 kgf

Losses at normative operating points (speed;torque), in percentage of rated output power

P1 (0,9;1,0)	P2 (0,5;1,0)	P3 (0,25;1,0)	P4 (0,9;0,5)	P5 (0,5;0,5)	P6 (0,5;0,25)	P7 (0,25;0,25)
15.9	12.8	12.5	10.1	7.0	5.8	4.3

		<u>Drive end</u>	<u>Non drive end</u>
Bearing type	:	6205 ZZ	6204 ZZ
Sealing	:	V'Ring	V'Ring
Lubrication interval	:	-	-
Lubricant amount	:	-	-
Lubricant type	:	Mobil Polyrex EM	

Notes

This revision replaces and cancel the previous one, which must be eliminated.

- (1) Looking the motor from the shaft end.
- (2) Measured at 1m and with tolerance of +3dB(A).
- (3) Approximate weight subject to changes after manufacturing process.
- (4) At 100% of full load.

These are average values based on tests with sinusoidal power supply, subject to the tolerances stipulated in NEMA MG-1.

Rev.	Changes Summary	Performed	Checked	Date
Performed by				Page 1 / 2
Checked by				
Date	20/10/2024			
				Revision

LOAD PERFORMANCE CURVE

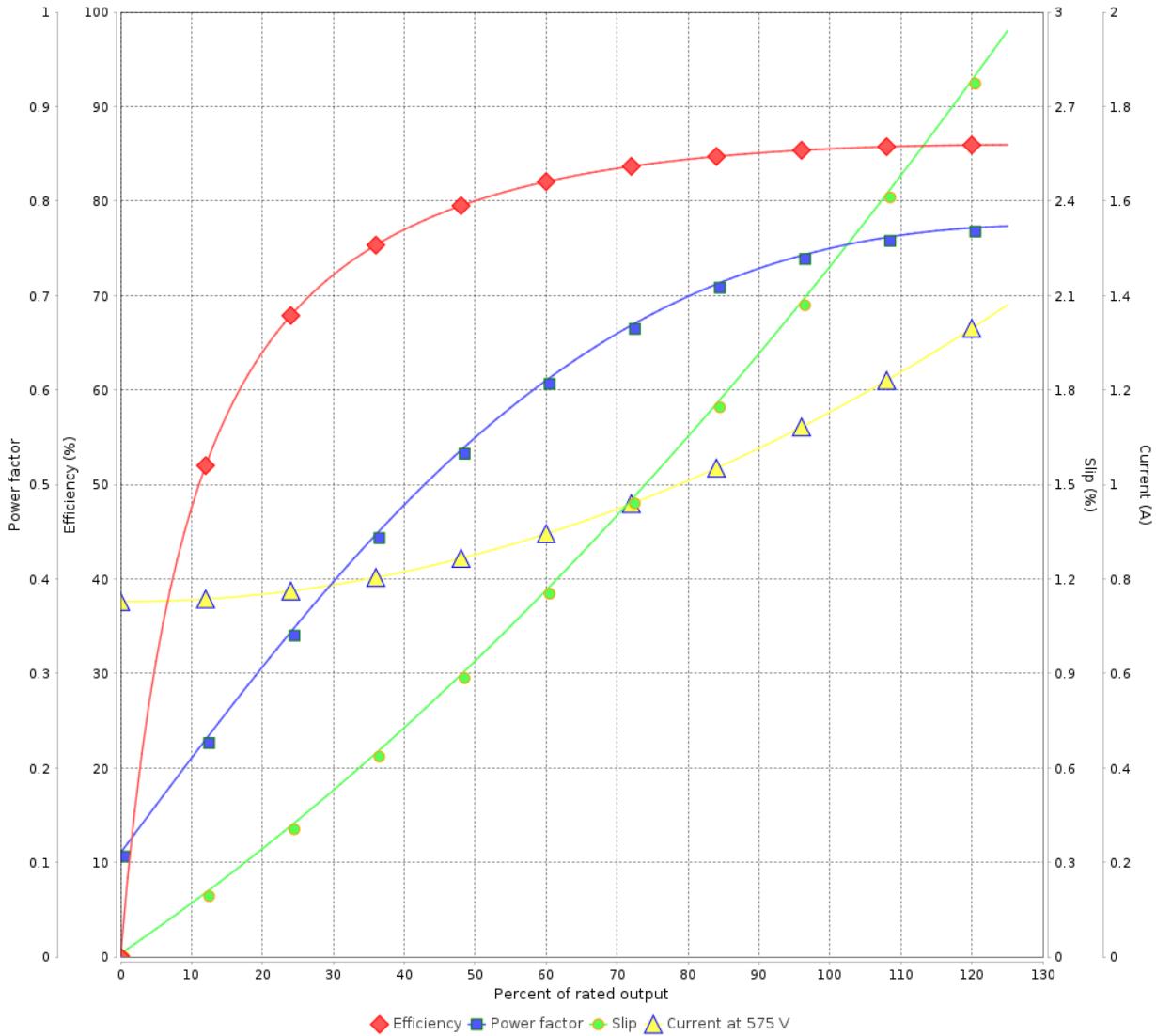
Three Phase Induction Motor - Squirrel Cage



Customer :

Product line : W22 NEMA Premium Efficiency Three-Phase Product code : 12438117

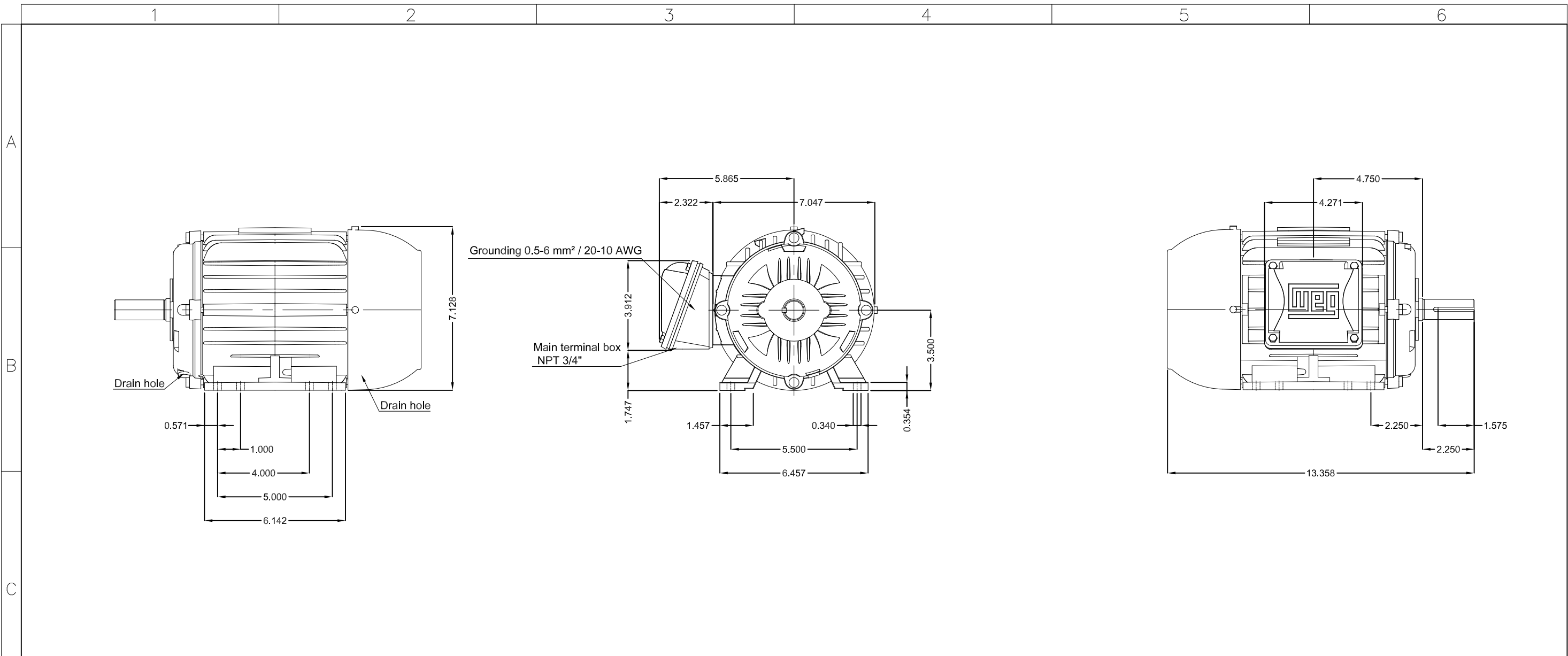
LOAD PERFORMANCE CURVE



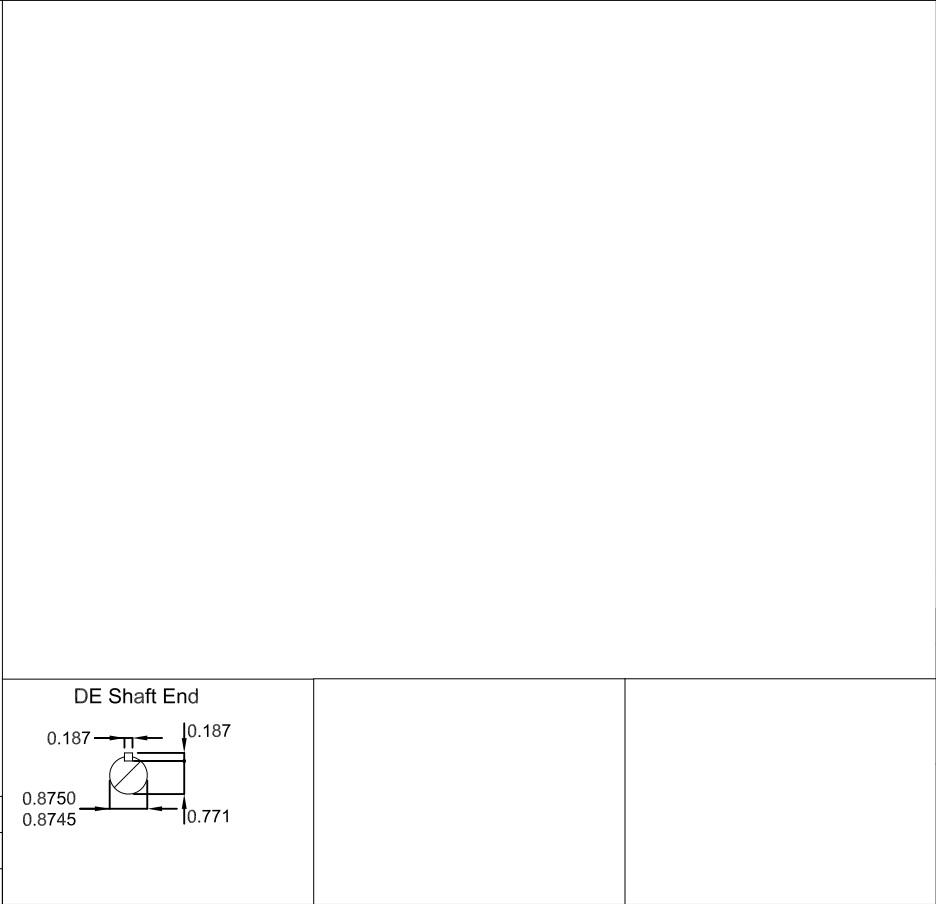
Performance : 575 V 60 Hz 4P

Rated current	: 1.18 A	Moment of inertia (J)	: 0.0049 kgm ²
LRC	: 8.6	Duty cycle	: Cont.(S1)
Rated torque	: 0.412 kgfm	Insulation class	: F
Locked rotor torque	: 290 %	Service factor	: 1.25
Breakdown torque	: 350 %	Temperature rise	: 80 K
Rated speed	: 1760 rpm	Design	: B

Rev.	Changes Summary	Performed	Checked	Date
Performed by		Page		Revision
Checked by		2 / 2		
Date	20/10/2024			



Color RAL 5009
Painting plan 207A
Mounting B3R(D)



1 HP 04 Poles 60 Hz		A	
ECM	LOC	SUMMARY OF MODIFICATIONS	
EXECUTED	HYBRISUSER	EXECUTED	00
CHECKED		CHECKED	
RELEASED		RELEASED	
REL. DATE		DATE	VER
		THREE PH. MOTOR W22 NEMA PREM. EFF.	
		FRAME 143/5T IP55 TEFC	
		HYBRISUSER	
		EXECUTED	
		CHECKED	
		RELEASED	
		DATE	
		VER	
		PREVIEW	
		WDD 00	
		SHEET /	

Dimensions in inches

A3

