

DATA SHEET

Single Phase Induction Motor - Squirrel Cage



Customer :

Product line : Farm Duty Single-Phase Product code : 11762305

Frame	: 184T	Locked rotor time	: 10s (cold) 6s (hot)
Output	: 5 HP (3.7 kW)	Temperature rise	: 80 K
Poles	: 4	Duty cycle	: Cont.(S1)
Frequency	: 60 Hz	Ambient temperature	: -20°C to +40°C
Rated voltage	: 230 V	Altitude	: 1000 m.a.s.l.
Rated current	: 21.4 A	Protection degree	: IP55
L. R. Amperes	: 171 A	Cooling method	: IC411 - TEFC
LRC	: 8.0x(Code J)	Mounting	: F-1
No load current	: 10.0 A	Rotation ¹	: Both (CW and CCW)
Rated speed	: 1730 rpm	Starting method	: Direct On Line
Slip	: 3.89 %	Approx. weight ³	: 51.3 kg
Rated torque	: 2.10 kgfm		
Locked rotor torque	: 370 %		
Breakdown torque	: 270 %		
Insulation class	: F		
Service factor	: 1.15		
Moment of inertia (J)	: 0.0183 kgm ²		

Output	50%	75%	100%	Foundation loads	
Efficiency (%)	72.0	78.0	79.0	Max. traction	: 93 kgf
Power Factor	0.86	0.92	0.95	Max. compression	: 144 kgf

		<u>Drive end</u>	<u>Non drive end</u>
Bearing type	:	6307 ZZ	6206 ZZ
Sealing	:	V'Ring	V'Ring
Lubrication interval	:	-	-
Lubricant amount	:	-	-
Lubricant type	:	Mobil Polyrex EM	

Notes

This revision replaces and cancel the previous one, which must be eliminated.

- (1) Looking the motor from the shaft end.
- (2) Measured at 1m and with tolerance of +3dB(A).
- (3) Approximate weight subject to changes after manufacturing process.
- (4) At 100% of full load.

These are average values based on tests with sinusoidal power supply, subject to the tolerances stipulated in NEMA MG-1.

Rev.	Changes Summary	Performed	Checked	Date
Performed by		Page 1 / 2 Revision		
Checked by				
Date	20/10/2024			

LOAD PERFORMANCE CURVE

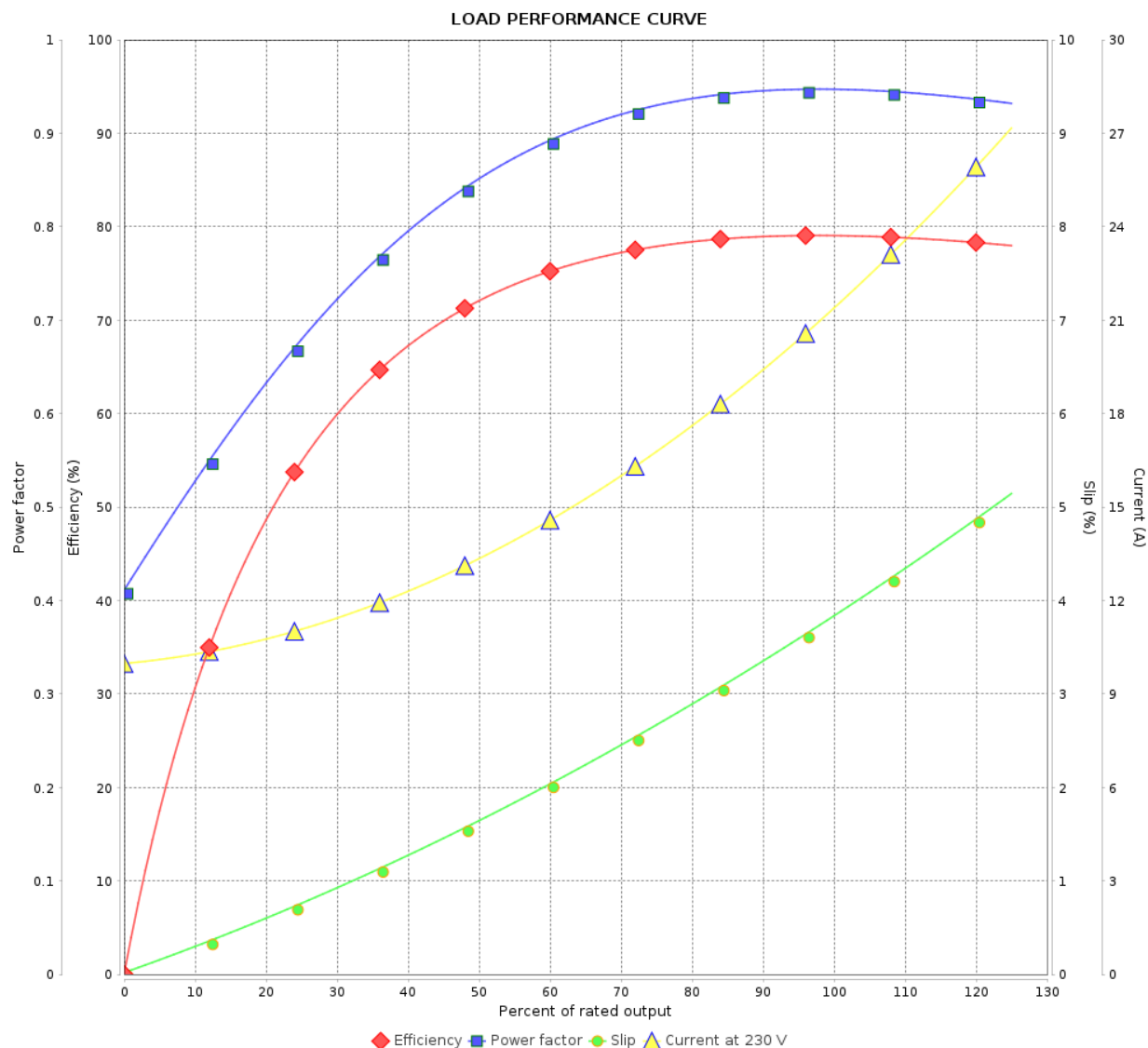
Single Phase Induction Motor - Squirrel Cage



Customer :

Product line : Farm Duty Single-Phase

Product code : 11762305

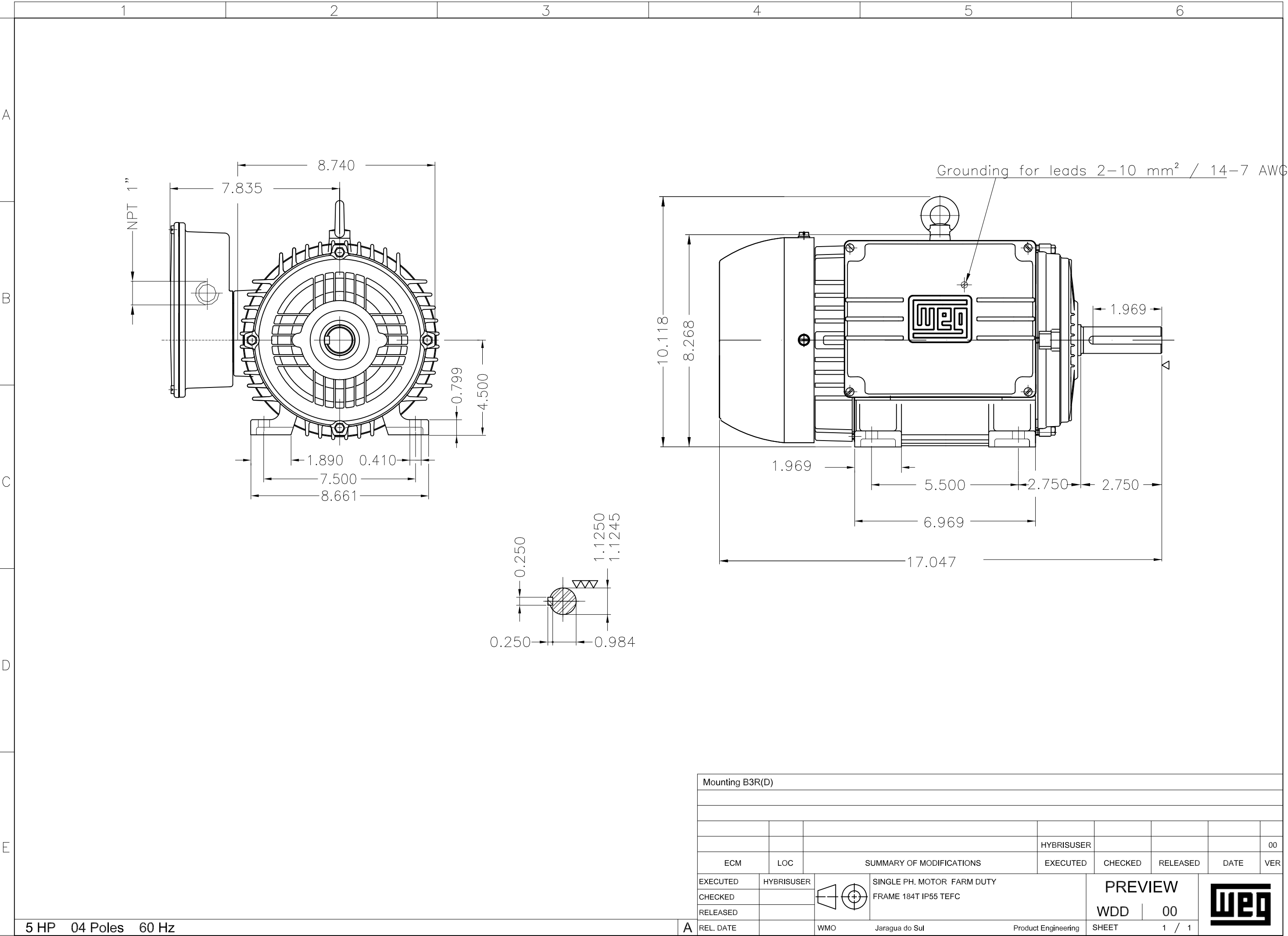


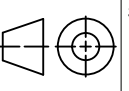

Performance : 230 V 60 Hz 4P

Rated current : 21.4 A
LRC : 8.0
Rated torque : 2.10 kgfm
Locked rotor torque : 370 %
Breakdown torque : 270 %
Rated speed : 1730 rpm

Moment of inertia (J) : 0.0183 kgm²
Duty cycle : Cont.(S1)
Insulation class : F
Service factor : 1.15
Temperature rise : 80 K

Rev.	Changes Summary		Performed	Checked	Date
Performed by				Page	Revision
Checked by				2 / 2	
Date					



Mounting B3R(D)									
						HYBRISUSER			00
ECM	LOC	SUMMARY OF MODIFICATIONS				EXECUTED	CHECKED	RELEASED	DATE VER
EXECUTED	HYBRISUSER		SINGLE PH. MOTOR FARM DUTY FRAME 184T IP55 TEFC				PREVIEW WDD 00		
CHECKED									
RELEASED									
REL. DATE		WMO	Jaragua do Sul	Product Engineering	SHEET	1 / 1			

5 HP 04 Poles 60 Hz

A