

# DATA SHEET



## Single Phase Induction Motor - Squirrel Cage

Customer :

Product line : Farm Duty Single-Phase Product code : 12992537

Frame	: G145TC	Locked rotor time	: 10s (cold) 6s (hot)
Output	: 1.5 HP (1.1 kW)	Temperature rise	: 80 K
Poles	: 4	Duty cycle	: Cont.(S1)
Frequency	: 60 Hz	Ambient temperature	: -20°C to +40°C
Rated voltage	: 115/230 V	Altitude	: 1000 m.a.s.l.
Rated current	: 17.4/8.70 A	Protection degree	: IP55
L. R. Amperes	: 113/56.5 A	Cooling method	: IC411 - TEFC
LRC	: 6.5x(Code K)	Mounting	: F-1
No load current	: 11.8/5.90 A	Rotation <sup>1</sup>	: Both (CW and CCW)
Rated speed	: 1750 rpm	Noise level <sup>2</sup>	: 55.0 dB(A)
Slip	: 2.78 %	Starting method	: Direct On Line
Rated torque	: 0.622 kgfm	Approx. weight <sup>3</sup>	: 25.2 kg
Locked rotor torque	: 280 %		
Breakdown torque	: 260 %		
Insulation class	: B		
Service factor	: 1.15		
Moment of inertia (J)	: 0.0082 kgm <sup>2</sup>		

Output	50%	75%	100%	Foundation loads	
Efficiency (%)	70.0	75.0	76.5	Max. traction	: 39 kgf
Power Factor	0.52	0.64	0.72	Max. compression	: 64 kgf

	Drive end	Non drive end
Bearing type	: 6205 ZZ	: 6203 ZZ
Sealing	: V'Ring	: V'Ring
Lubrication interval	: -	: -
Lubricant amount	: -	: -
Lubricant type	: Mobil Polyrex EM	

### Notes

This revision replaces and cancel the previous one, which must be eliminated.

- (1) Looking the motor from the shaft end.
- (2) Measured at 1m and with tolerance of +3dB(A).
- (3) Approximate weight subject to changes after manufacturing process.
- (4) At 100% of full load.

These are average values based on tests with sinusoidal power supply, subject to the tolerances stipulated in NEMA MG-1.

Rev.	Changes Summary	Performed	Checked	Date
Performed by				
Checked by			Page	Revision
Date	20/10/2024		1 / 2	

# LOAD PERFORMANCE CURVE

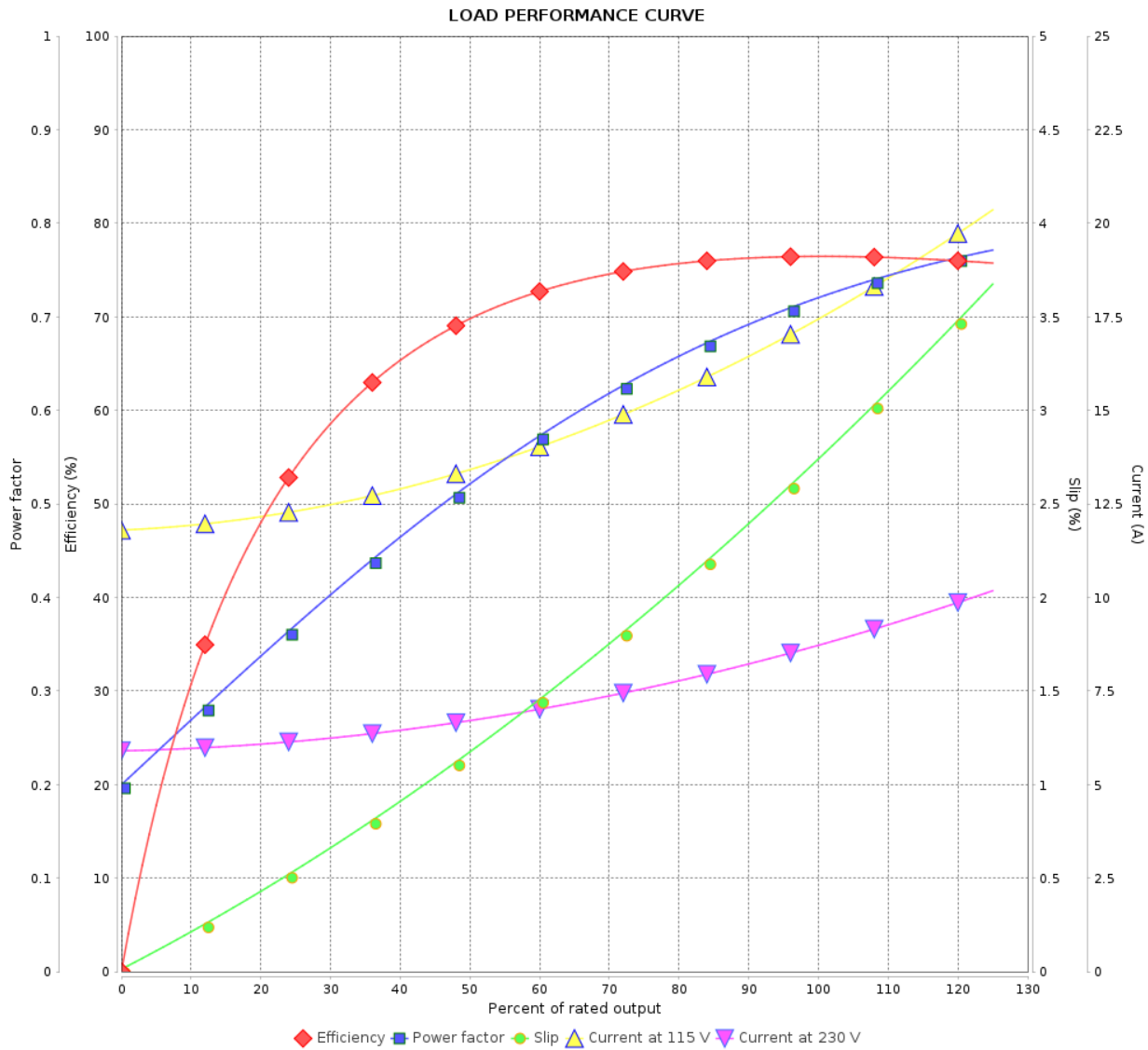
Single Phase Induction Motor - Squirrel Cage



Customer :

Product line : Farm Duty Single-Phase

Product code : 12992537



Performance : 115/230 V 60 Hz 4P

Rated current : 17.4/8.70 A  
 LRC : 6.5  
 Rated torque : 0.622 kgfm  
 Locked rotor torque : 280 %  
 Breakdown torque : 260 %  
 Rated speed : 1750 rpm

Moment of inertia (J) : 0.0082 kgm<sup>2</sup>  
 Duty cycle : Cont.(S1)  
 Insulation class : B  
 Service factor : 1.15  
 Temperature rise : 80 K

Rev.	Changes Summary	Performed	Checked	Date
Performed by			Page 2 / 2	Revision
Checked by				
Date	20/10/2024			

1 2 3 4 5 6

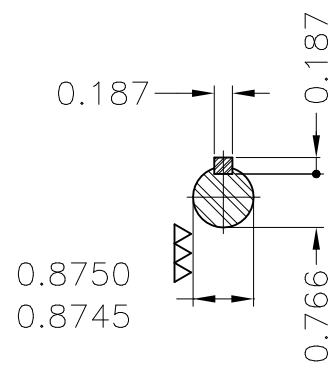
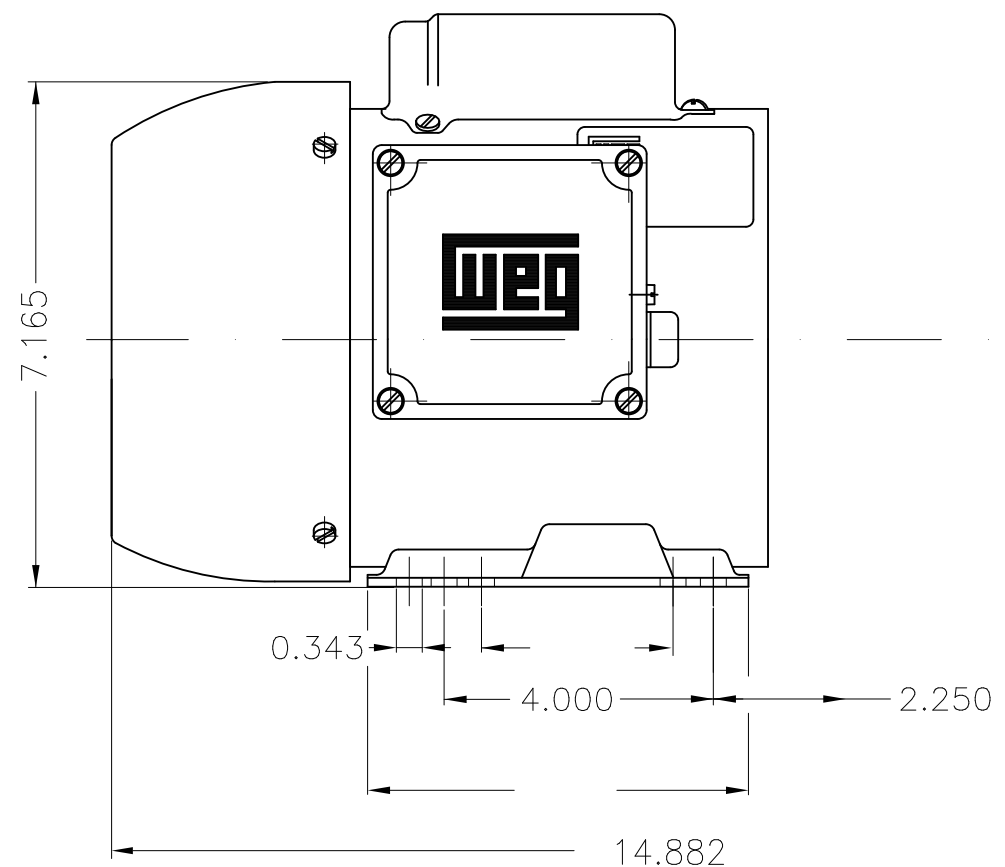
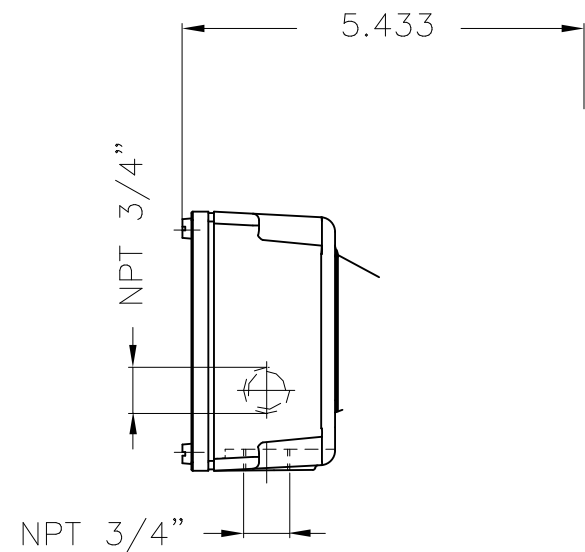
A

B

C

D

E



Mounting NEMA F-1										
Mounting B34R(D)										
ECM	LOC	SUMMARY OF MODIFICATIONS				EXECUTED	CHECKED	RELEASED	DATE	VER
EXECUTED	DATAVIEWER	USER	SINGLE PH. MOTOR FARM DUTY				PREVIEW		WEG	
CHECKED			FRAME G145TC IP55 TEFC				WDD		SHEET 1 / 1	
RELEASED										
REL DT.		WMO	Jaragua do Sul	Product Engineering						

1.5 HP 04 Poles 60 Hz