

DATA SHEET



Single Phase Induction Motor - Squirrel Cage

Customer :					
Product line		: Farm Duty Single-Phase		Product code : 10021929	
Frame	: G145T		Locked rotor time	: 10s (cold) 6s (hot)	
Output	: 1.5 HP (1.1 kW)		Temperature rise	: 80 K	
Poles	: 4		Duty cycle	: Cont.(S1)	
Frequency	: 60 Hz		Ambient temperature	: -20°C to +40°C	
Rated voltage	: 115/230 V		Altitude	: 1000 m.a.s.l.	
Rated current	: 17.4/8.70 A		Protection degree	: IP55	
L. R. Amperes	: 113/56.5 A		Cooling method	: IC411 - TEFC	
LRC	: 6.5x(Code K)		Mounting	: F-1	
No load current	: 11.8/5.90 A		Rotation ¹	: Both (CW and CCW)	
Rated speed	: 1750 rpm		Noise level ²	: 55.0 dB(A)	
Slip	: 2.78 %		Starting method	: Direct On Line	
Rated torque	: 0.622 kgfm		Approx. weight ³	: 22.6 kg	
Locked rotor torque	: 280 %				
Breakdown torque	: 260 %				
Insulation class	: B				
Service factor	: 1.15				
Moment of inertia (J)	: 0.0082 kgm ²				
Output	50%	75%	100%	Foundation loads	
Efficiency (%)	70.0	75.0	76.5	Max. traction : 40 kgf	
Power Factor	0.52	0.64	0.72	Max. compression : 63 kgf	
		<u>Drive end</u>		<u>Non drive end</u>	
Bearing type	:	6205 ZZ		6203 ZZ	
Sealing	:	V'Ring		V'Ring	
Lubrication interval	:	-		-	
Lubricant amount	:	-		-	
Lubricant type	:	Mobil Polyrex EM			
Notes					
<p>This revision replaces and cancel the previous one, which must be eliminated.</p> <p>(1) Looking the motor from the shaft end.</p> <p>(2) Measured at 1m and with tolerance of +3dB(A).</p> <p>(3) Approximate weight subject to changes after manufacturing process.</p> <p>(4) At 100% of full load.</p>			<p>These are average values based on tests with sinusoidal power supply, subject to the tolerances stipulated in NEMA MG-1.</p>		
Rev.	Changes Summary		Performed	Checked	Date
Performed by					
Checked by				Page	Revision
Date	20/10/2024			1 / 2	

LOAD PERFORMANCE CURVE

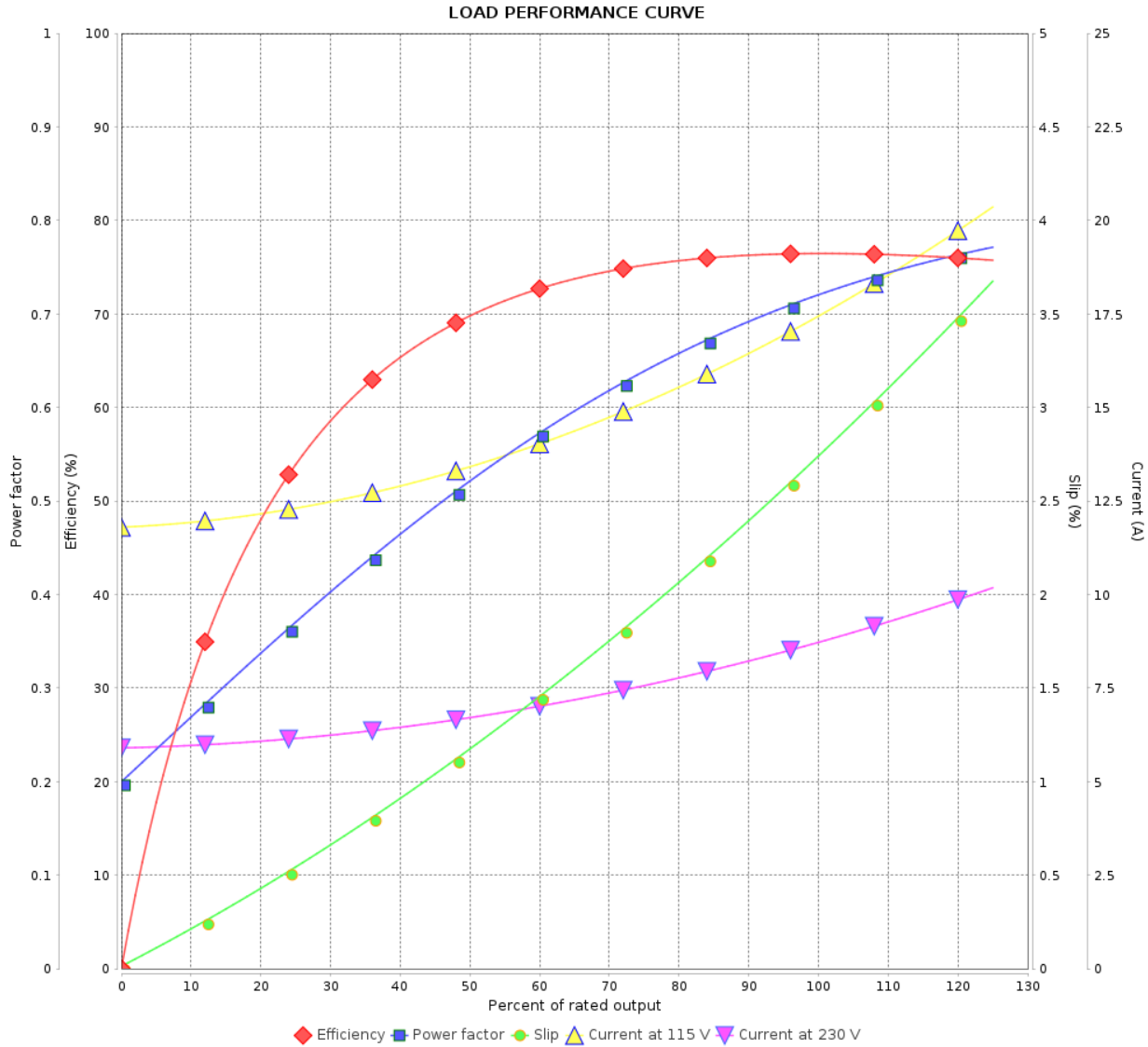
Single Phase Induction Motor - Squirrel Cage



Customer :

Product line : Farm Duty Single-Phase

Product code : 10021929

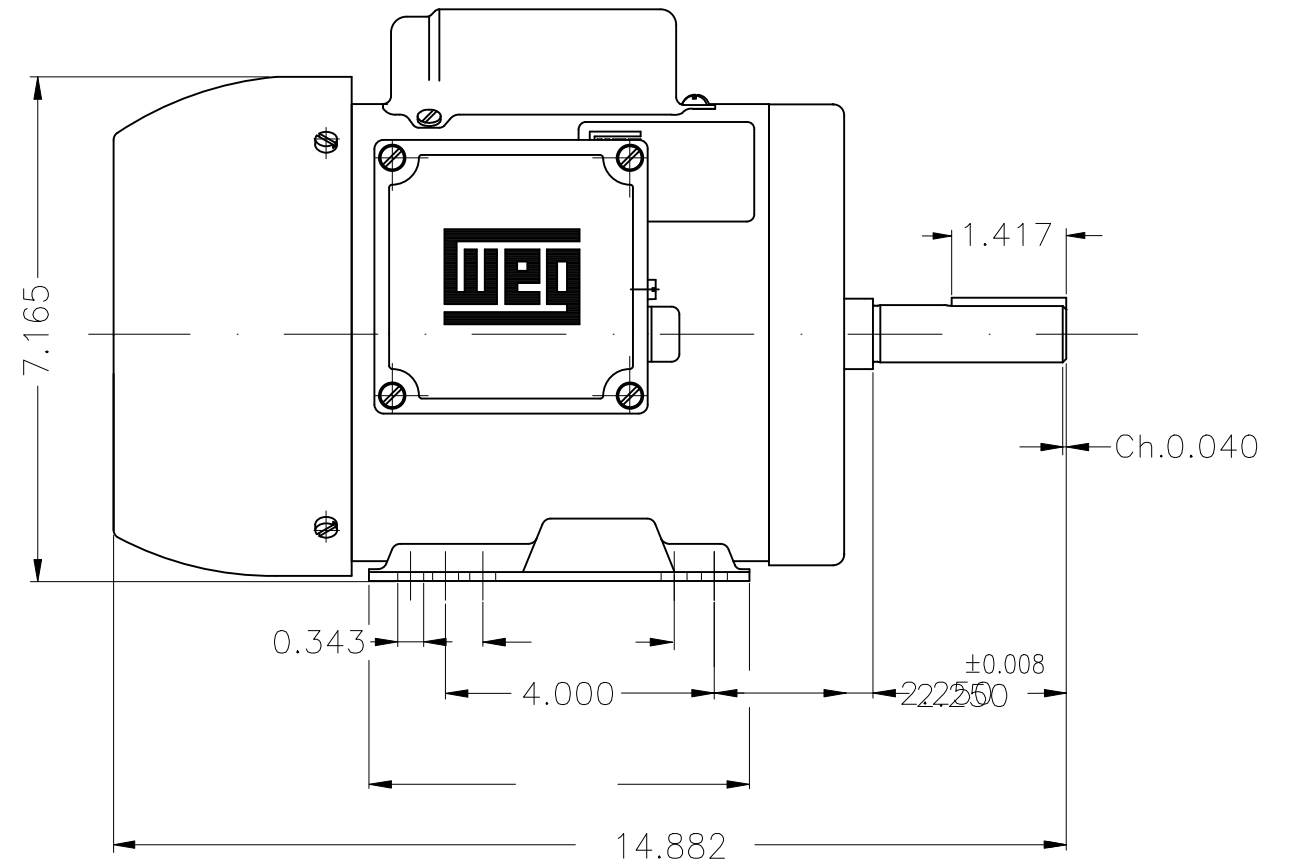
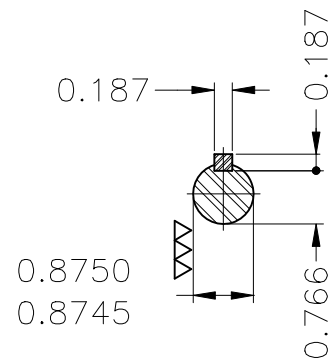
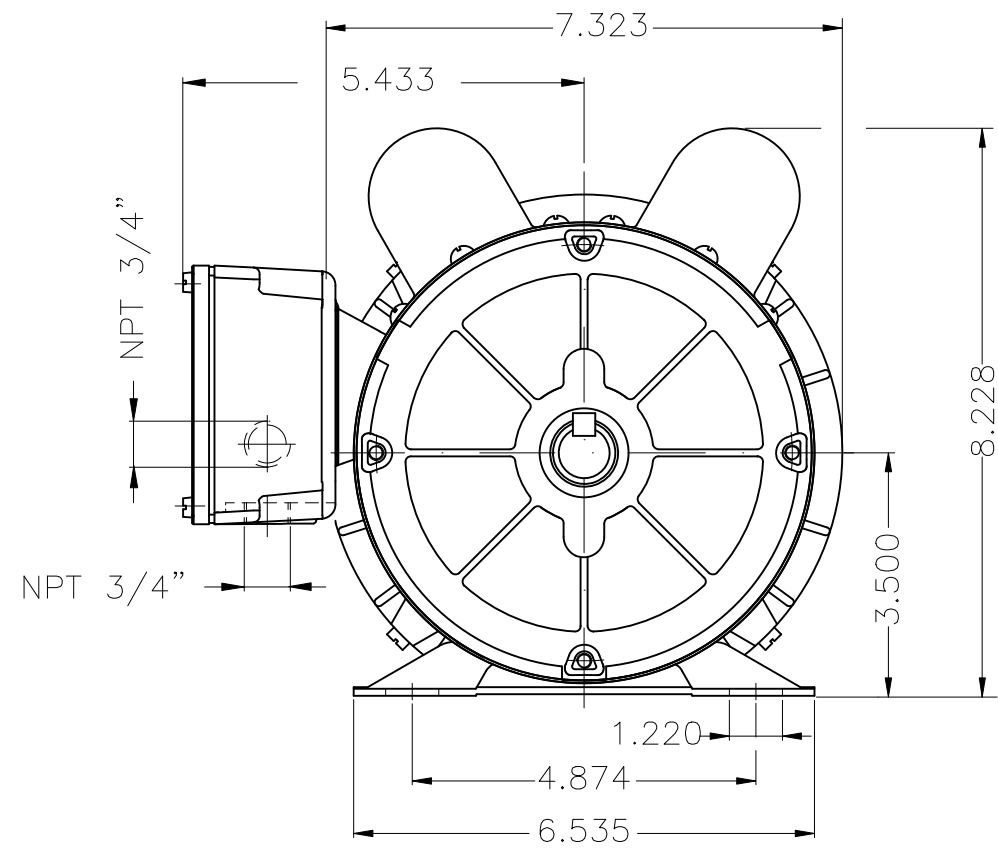


Performance : 115/230 V 60 Hz 4P

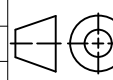
Rated current : 17.4/8.70 A
 LRC : 6.5
 Rated torque : 0.622 kgfm
 Locked rotor torque : 280 %
 Breakdown torque : 260 %
 Rated speed : 1750 rpm

Moment of inertia (J) : 0.0082 kgm²
 Duty cycle : Cont.(S1)
 Insulation class : B
 Service factor : 1.15
 Temperature rise : 80 K

Rev.	Changes Summary	Performed	Checked	Date
Performed by			Page 2 / 2	Revision
Checked by				
Date	20/10/2024			



Mounting B3R(D)

ECM	LOC	SUMMARY OF MODIFICATIONS	EXECUTED	CHECKED	RELEASED	DATE	VER
EXECUTED	HYBRISUSER	 SINGLE PH. MOTOR FARM DUTY FRAME G145T IP55 TEFC					
CHECKED							
RELEASED							
REL. DATE		WMO Jaragua do Sul	Product Engineering				

PREVIEW
WDD 00



1.5 HP 04 Poles 60 Hz

A