

DATA SHEET

Single Phase Induction Motor - Squirrel Cage



Customer :

Product line : Farm Duty Single-Phase Product code : 10483392

Frame	: F143T	Locked rotor time	: 10s (cold) 6s (hot)
Output	: 1 HP (0.75 kW)	Temperature rise	: 80 K
Poles	: 4	Duty cycle	: Cont.(S1)
Frequency	: 60 Hz	Ambient temperature	: -20°C to +40°C
Rated voltage	: 115/230 V	Altitude	: 1000 m.a.s.l.
Rated current	: 14.0/7.00 A	Protection degree	: IP55
L. R. Amperes	: 91.0/45.5 A	Cooling method	: IC411 - TEFC
LRC	: 6.5x(Code M)	Mounting	: F-1
No load current	: 11.5/5.75 A	Rotation ¹	: Both (CW and CCW)
Rated speed	: 1750 rpm	Noise level ²	: 55.0 dB(A)
Slip	: 2.78 %	Starting method	: Direct On Line
Rated torque	: 0.415 kgfm	Approx. weight ³	: 17.5 kg
Locked rotor torque	: 320 %		
Breakdown torque	: 270 %		
Insulation class	: B		
Service factor	: 1.15		
Moment of inertia (J)	: 0.0056 kgm ²		

Output	50%	75%	100%	Foundation loads	
Efficiency (%)	60.0	67.0	70.3	Max. traction	: 27 kgf
Power Factor	0.45	0.56	0.65	Max. compression	: 44 kgf

		<u>Drive end</u>	<u>Non drive end</u>
Bearing type	:	6205 ZZ	6203 ZZ
Sealing	:	V'Ring	V'Ring
Lubrication interval	:	-	-
Lubricant amount	:	-	-
Lubricant type	:	Mobil Polyrex EM	

Notes

This revision replaces and cancel the previous one, which must be eliminated.

- (1) Looking the motor from the shaft end.
- (2) Measured at 1m and with tolerance of +3dB(A).
- (3) Approximate weight subject to changes after manufacturing process.
- (4) At 100% of full load.

These are average values based on tests with sinusoidal power supply, subject to the tolerances stipulated in NEMA MG-1.

Rev.	Changes Summary	Performed	Checked	Date
Performed by		Page 1 / 2 Revision		
Checked by				
Date	20/10/2024			

LOAD PERFORMANCE CURVE

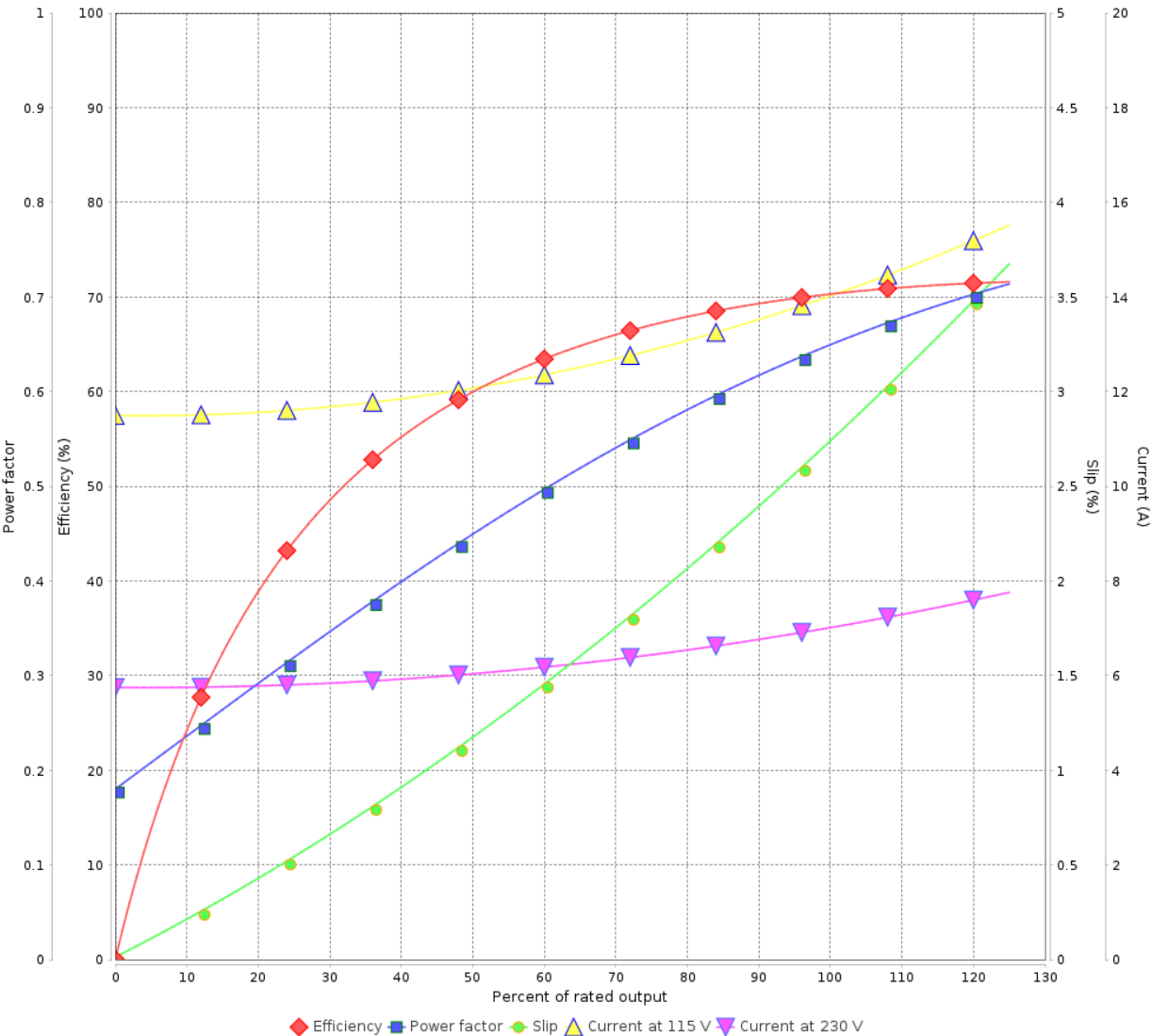
Single Phase Induction Motor - Squirrel Cage



Customer :

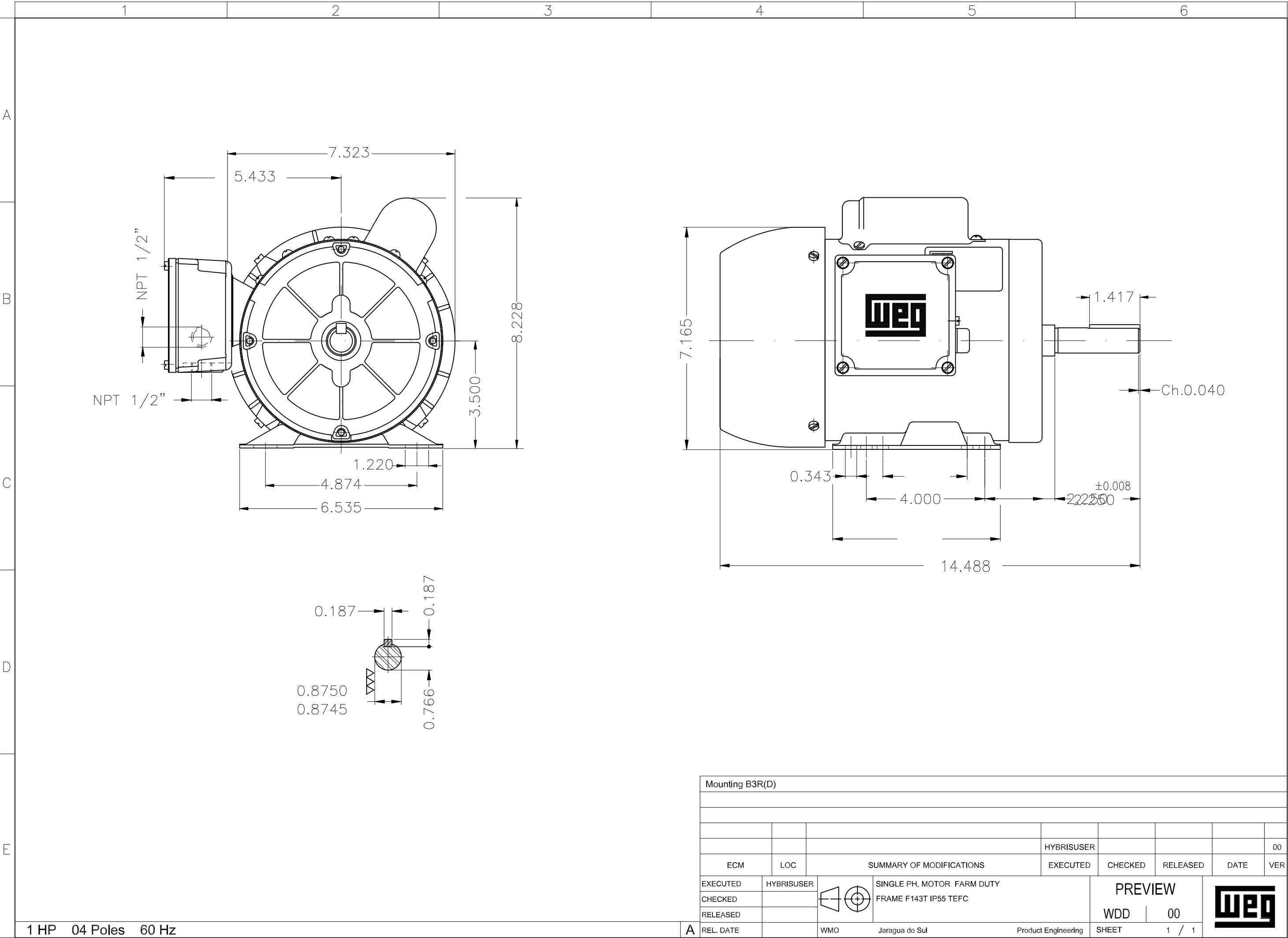
Product line : Farm Duty Single-Phase Product code : 10483392

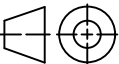

LOAD PERFORMANCE CURVE



Performance : 115/230 V 60 Hz 4P			
Rated current	: 14.0/7.00 A	Moment of inertia (J)	: 0.0056 kgm²
LRC	: 6.5	Duty cycle	: Cont.(S1)
Rated torque	: 0.415 kgfm	Insulation class	: B
Locked rotor torque	: 320 %	Service factor	: 1.15
Breakdown torque	: 270 %	Temperature rise	: 80 K
Rated speed	: 1750 rpm		

Rev.	Changes Summary	Performed	Checked	Date
Performed by		Page 2 / 2 Revision		
Checked by				
Date	20/10/2024			



Mounting B3R(D)										
						HYBRISUSER				00
ECM	LOC	SUMMARY OF MODIFICATIONS				EXECUTED	CHECKED	RELEASED	DATE	VER
EXECUTED	HYBRISUSER		SINGLE PH. MOTOR FARM DUTY FRAME F143T IP55 TEFC				PREVIEW			
CHECKED										
RELEASED										
REL. DATE										
		WMO	Jaragua do Sul			Product Engineering	SHEET	1 / 1		