

# DATA SHEET

## Three Phase Induction Motor - Squirrel Cage



Customer					
Product line	: Standard Efficiency Three-Phase	Product code	: 12894760		
Frame	: 56HC	Cooling method	: IC411 - TEFC		
Insulation class	: F	Mounting	: F-1		
Duty cycle	: Cont.(S1)	Rotation <sup>1</sup>	: Both (CW and CCW)		
Ambient temperature	: -20°C to +40°C	Starting method	: Direct On Line		
Altitude	: 1000 m.a.s.l.	Approx. weight <sup>3</sup>	: 14.7 kg		
Protection degree	: IP55	Moment of inertia (J)	: 0.0041 kgm <sup>2</sup>		
Design	: A				
Output [HP]	2				
Poles	2				
Frequency [Hz]	60				
Rated voltage [V]	575				
Rated current [A]	2.10				
L. R. Amperes [A]	16.1				
LRC [A]	7.7x(Code K)				
No load current [A]	0.829				
Rated speed [RPM]	3475				
Slip [%]	3.47				
Rated torque [kgfm]	0.418				
Locked rotor torque [%]	229				
Breakdown torque [%]	290				
Service factor	1.15				
Temperature rise	80 K				
Locked rotor time	19s (cold) 11s (hot)				
Noise level <sup>2</sup>	68.0 dB(A)				
Efficiency (%)	25%	73.9			
	50%	75.5			
	75%	78.5			
	100%	80.0			
Power Factor	25%	0.49			
	50%	0.76			
	75%	0.86			
	100%	0.90			
Bearing type	: Drive end	Non drive end	Foundation loads		
Sealing	: V'Ring	Without Bearing Seal	Max. traction	: 31 kgf	
Lubrication interval	: -	-	Max. compression	: 46 kgf	
Lubricant amount	: -	-			
Lubricant type	: Mobil Polyrex EM				
Notes					
This revision replaces and cancel the previous one, which must be eliminated. (1) Looking the motor from the shaft end. (2) Measured at 1m and with tolerance of +3dB(A). (3) Approximate weight subject to changes after manufacturing process. (4) At 100% of full load.			These are average values based on tests with sinusoidal power supply, subject to the tolerances stipulated in NEMA MG-1.		
Rev.	Changes Summary		Performed	Checked	Date
Performed by					
Checked by					
Date	13/05/2022			Page	Revision
				1 / 2	

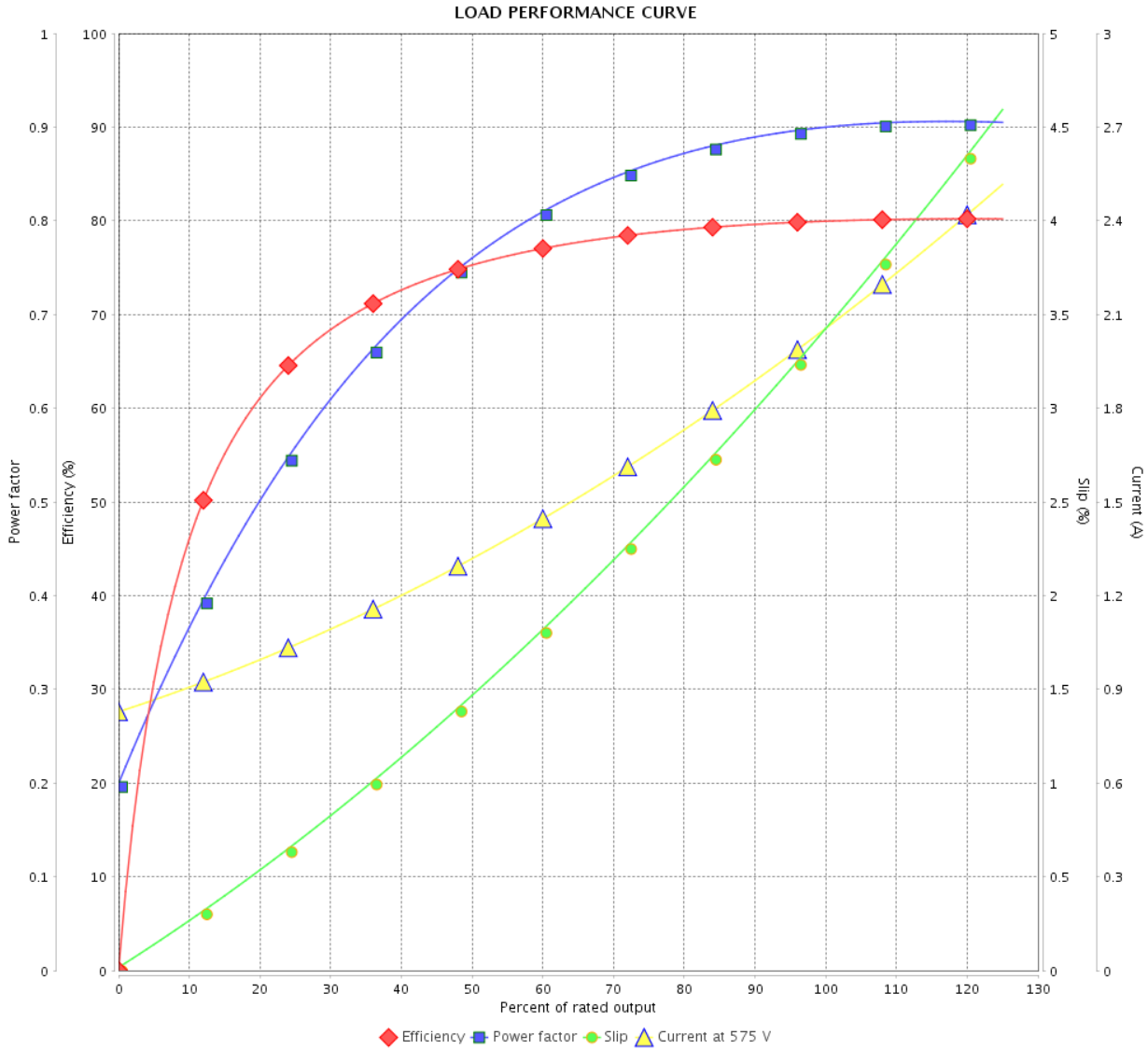
# LOAD PERFORMANCE CURVE

Three Phase Induction Motor - Squirrel Cage



Customer : \_\_\_\_\_

Product line : Standard Efficiency Three-Phase      Product code : 12894760



Performance : 575 V 60 Hz 2P

Rated current	: 2.10 A	Moment of inertia (J)	: 0.0041 kgm <sup>2</sup>
LRC	: 7.7	Duty cycle	: Cont.(S1)
Rated torque	: 0.418 kgfm	Insulation class	: F
Locked rotor torque	: 229 %	Service factor	: 1.15
Breakdown torque	: 290 %	Temperature rise	: 80 K
Rated speed	: 3475 rpm	Design	: A

Rev.	Changes Summary	Performed	Checked	Date
Performed by			Page 2 / 2	Revision
Checked by				
Date	13/05/2022			

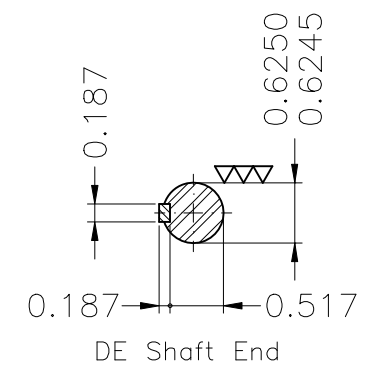
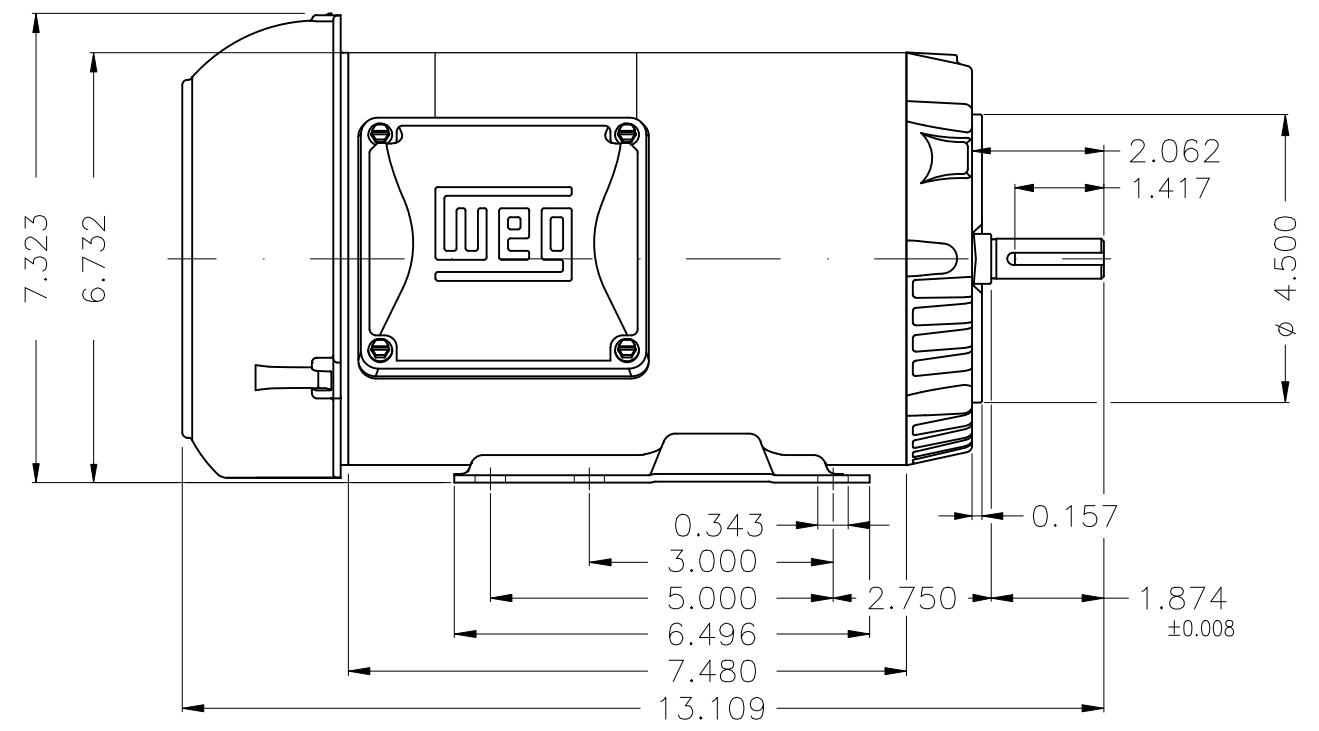
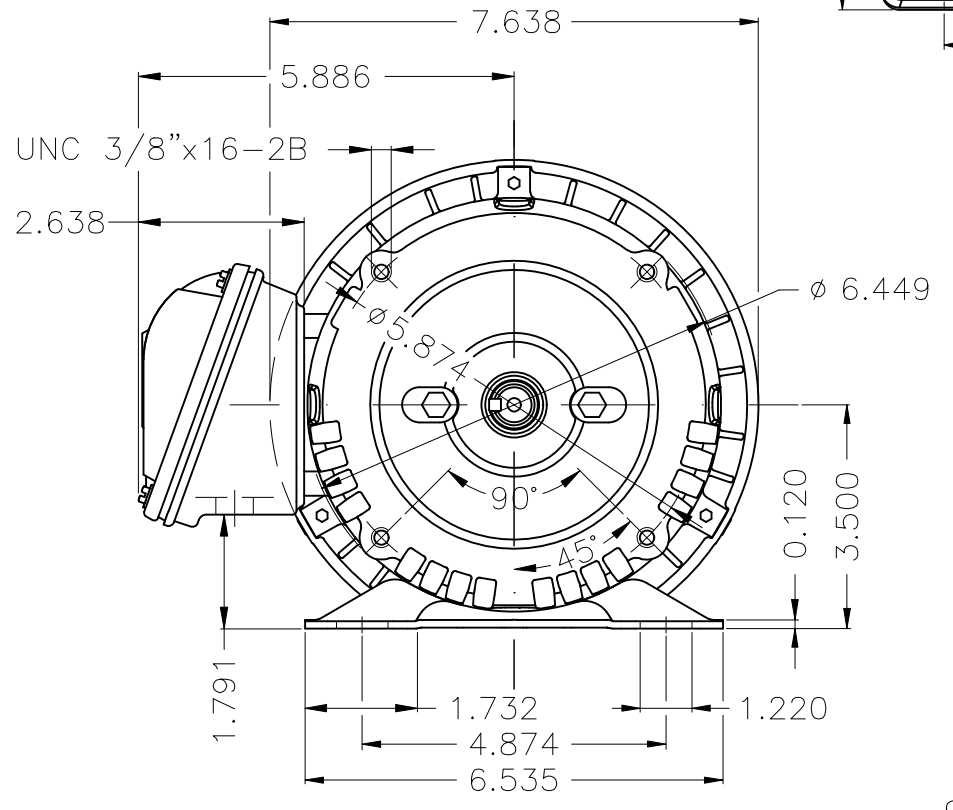
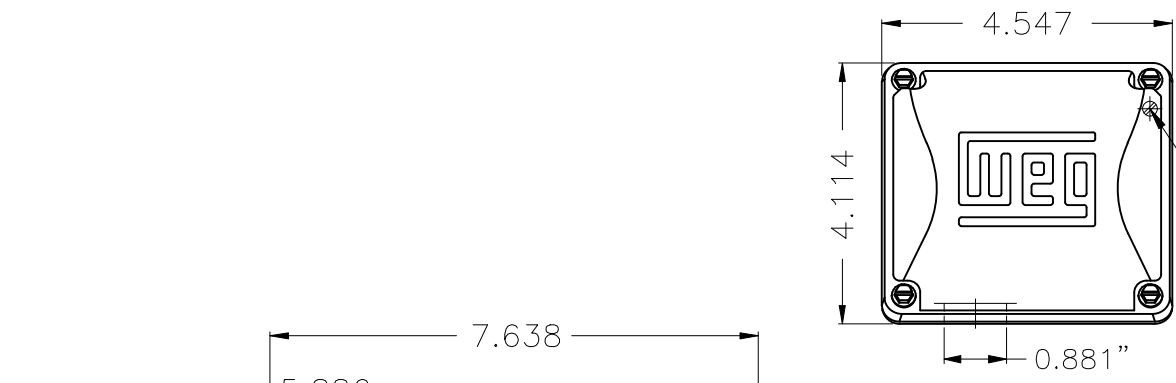
A

B

C

D

E



Color Munsell N 1 matte black  
 Painting plan 207N  
 Mounting B34D

ECM	LOC	SUMMARY OF MODIFICATIONS	EXECUTED	CHECKED	RELEASED	DATE	VER
EXECUTED	HYBRISUSER	THREE PH. MOTOR ROLLED STEEL					00
CHECKED		FRAME 56HC IP55 TEFC					
RELEASED							

PREVIEW

WDD 00



2 HP 02 Poles 60 Hz

A REL. DATE WMO Jaragua do Sul Product Engineering SHEET 1 / 1