

DATA SHEET

Three Phase Induction Motor - Squirrel Cage



Customer :

Product line : Standard Efficiency Three-Phase Product code : 12894764

Frame	: 56HC	Cooling method	: IC411 - TEFC
Insulation class	: F	Mounting	: F-1
Duty cycle	: Cont.(S1)	Rotation ¹	: Both (CW and CCW)
Ambient temperature	: -20°C to +40°C	Starting method	: Direct On Line
Altitude	: 1000 m.a.s.l.	Approx. weight ³	: 17.0 kg
Protection degree	: IP55	Moment of inertia (J)	: 0.0052 kgm ²
Design	: A		

Output [HP]	2	1.5	1.5
Poles	4	4	4
Frequency [Hz]	60	50	50
Rated voltage [V]	230/460	190/380	220/415
Rated current [A]	5.70/2.85	5.24/2.62	4.96/2.63
L. R. Amperes [A]	41.6/20.8	38.3/19.1	38.2/20.3
LRC [A]	7.3x(Code K)	7.3x(Code K)	7.7x(Code L)
No load current [A]	3.33/1.66	3.23/1.61	3.52/1.87
Rated speed [RPM]	1745	1445	1450
Slip [%]	3.06	3.67	3.33
Rated torque [kgfm]	0.832	0.753	0.751
Locked rotor torque [%]	240	250	280
Breakdown torque [%]	270	290	320
Service factor		1.15	1.15
Temperature rise	80 K	80 K	80 K
Locked rotor time	14s (cold) 8s (hot)	0s (cold) 0s (hot)	0s (cold) 0s (hot)
Noise level ²	52.0 dB(A)	49.0 dB(A)	49.0 dB(A)
Efficiency (%)	25%	78.9	77.4
	50%	80.0	77.8
	75%	81.5	80.6
	100%	82.5	80.6
Power Factor	25%	0.33	0.32
	50%	0.58	0.57
	75%	0.72	0.71
	100%	0.80	0.79

Bearing type	: Drive end 6204 ZZ Non drive end 6202 ZZ	Foundation loads	
Sealing	: V'Ring Without Bearing Seal	Max. traction	: 69 kgf
Lubrication interval	: - -	Max. compression	: 86 kgf
Lubricant amount	: - -		
Lubricant type	: Mobil Polyrex EM		

Notes

USABLE @208V 6.30A SF 1.00 SFA 6.30A

This revision replaces and cancel the previous one, which must be eliminated.

- (1) Looking the motor from the shaft end.
- (2) Measured at 1m and with tolerance of +3dB(A).
- (3) Approximate weight subject to changes after manufacturing process.
- (4) At 100% of full load.

These are average values based on tests with sinusoidal power supply, subject to the tolerances stipulated in NEMA MG-1.

Rev.	Changes Summary	Performed	Checked	Date
Performed by				
Checked by				
Date	13/05/2022			

Page 1 / 4
Revision

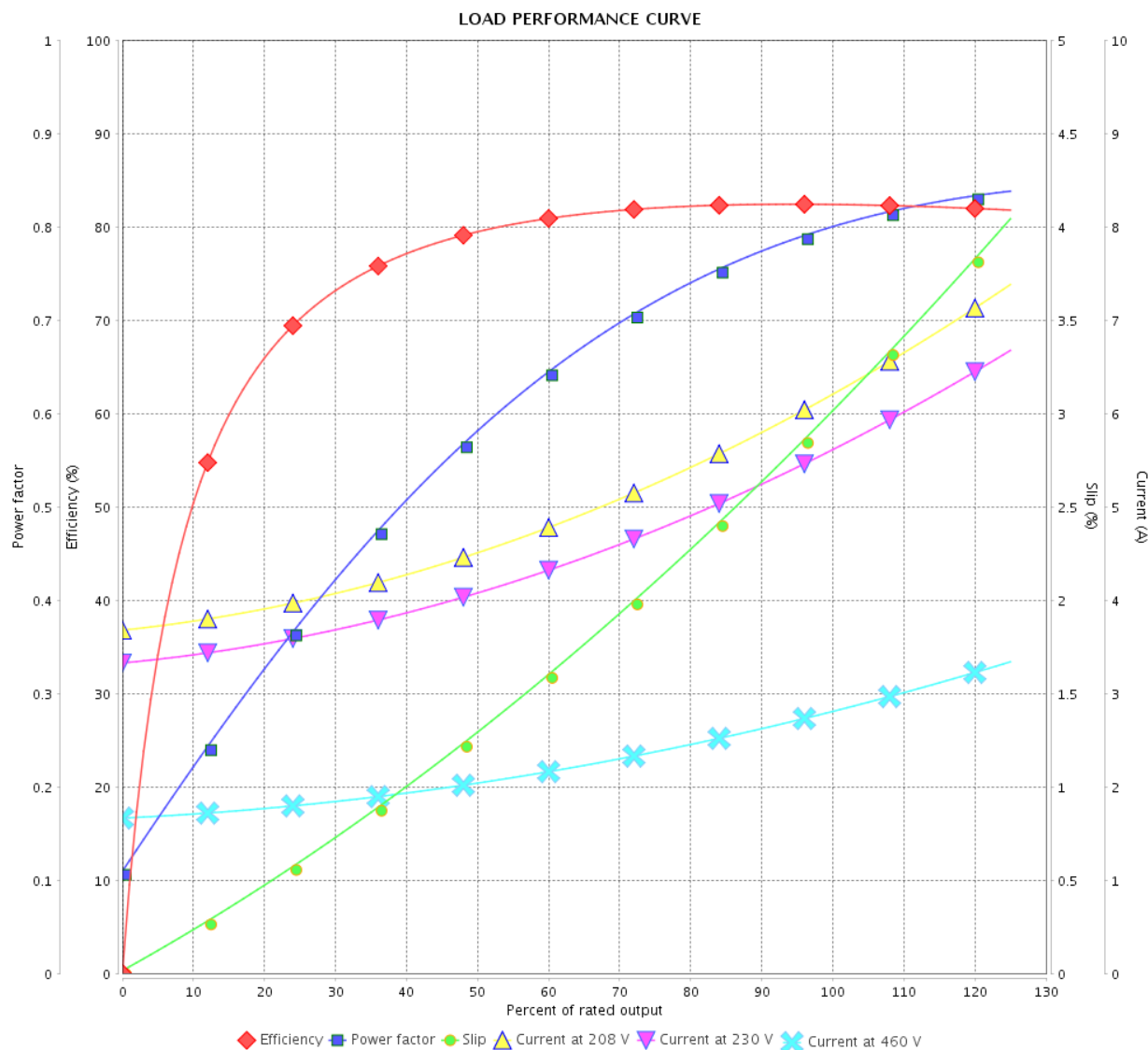
LOAD PERFORMANCE CURVE

Three Phase Induction Motor - Squirrel Cage



Customer :

Product line : Standard Efficiency Three-Phase Product code : 12894764



Performance : 230/460 V 60 Hz 4P

Rated current : 5.70/2.85 A
 LRC : 7.3
 Rated torque : 0.832 kgfm
 Locked rotor torque : 240 %
 Breakdown torque : 270 %
 Rated speed : 1745 rpm

Moment of inertia (J) : 0.0052 kgm²
 Duty cycle : Cont.(S1)
 Insulation class : F
 Service factor :
 Temperature rise : 80 K
 Design : A

Rev.	Changes Summary		Performed	Checked	Date
Performed by				Page	Revision
Checked by				2 / 4	
Date					

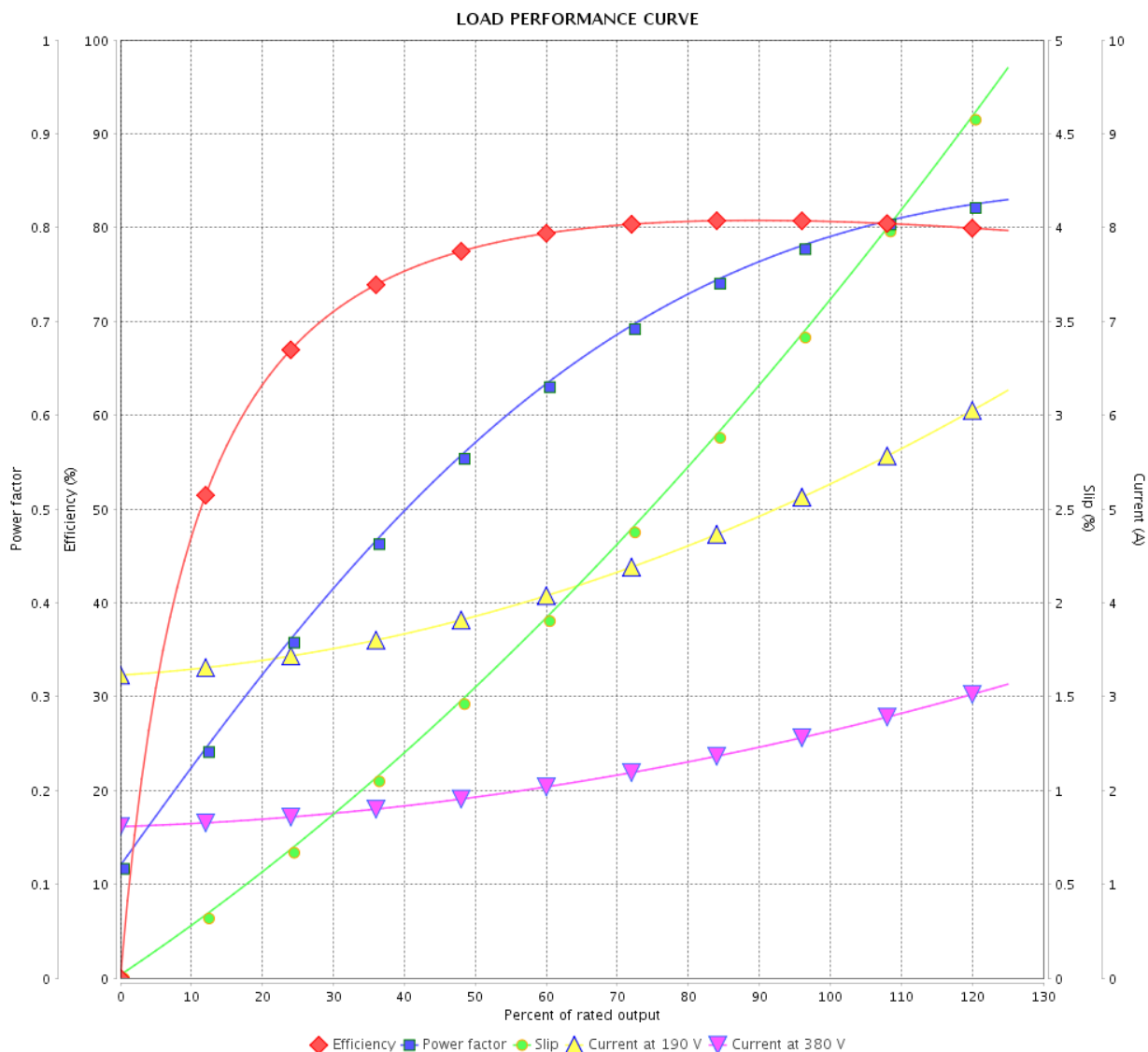
LOAD PERFORMANCE CURVE

Three Phase Induction Motor - Squirrel Cage



Customer :

Product line : Standard Efficiency Three-Phase Product code : 12894764



Performance : 190/380 V 50 Hz 4P

Rated current : 5.24/2.62 A
 LRC : 7.3
 Rated torque : 0.753 kgfm
 Locked rotor torque : 250 %
 Breakdown torque : 290 %
 Rated speed : 1445 rpm

Moment of inertia (J) : 0.0052 kgm²
 Duty cycle : Cont.(S1)
 Insulation class : F
 Service factor : 1.15
 Temperature rise : 80 K
 Design : A

Rev.	Changes Summary	Performed	Checked	Date
Performed by		Page 3 / 4Revision		
Checked by				
Date	13/05/2022			

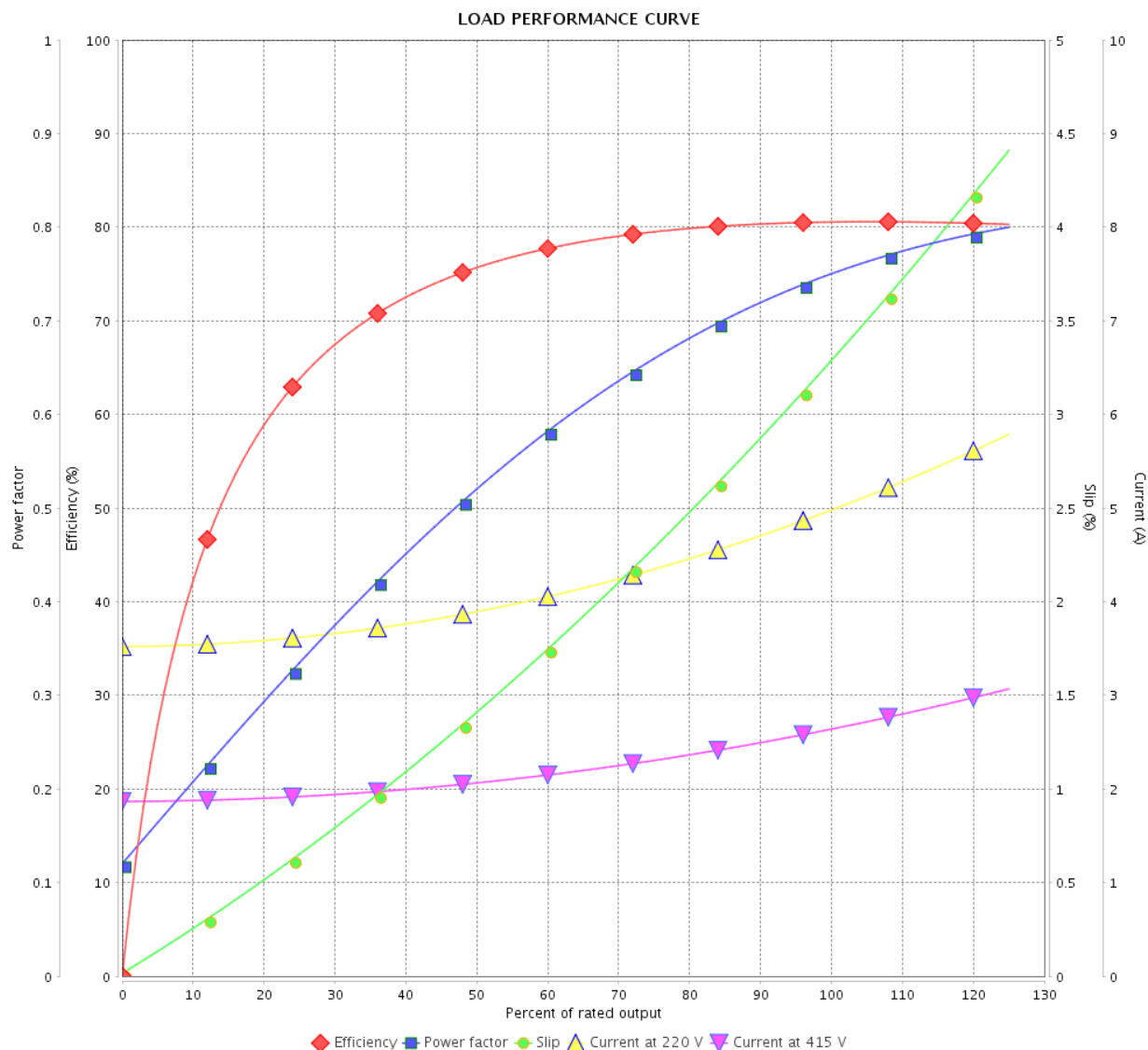
LOAD PERFORMANCE CURVE

Three Phase Induction Motor - Squirrel Cage



Customer :

Product line : Standard Efficiency Three-Phase Product code : 12894764

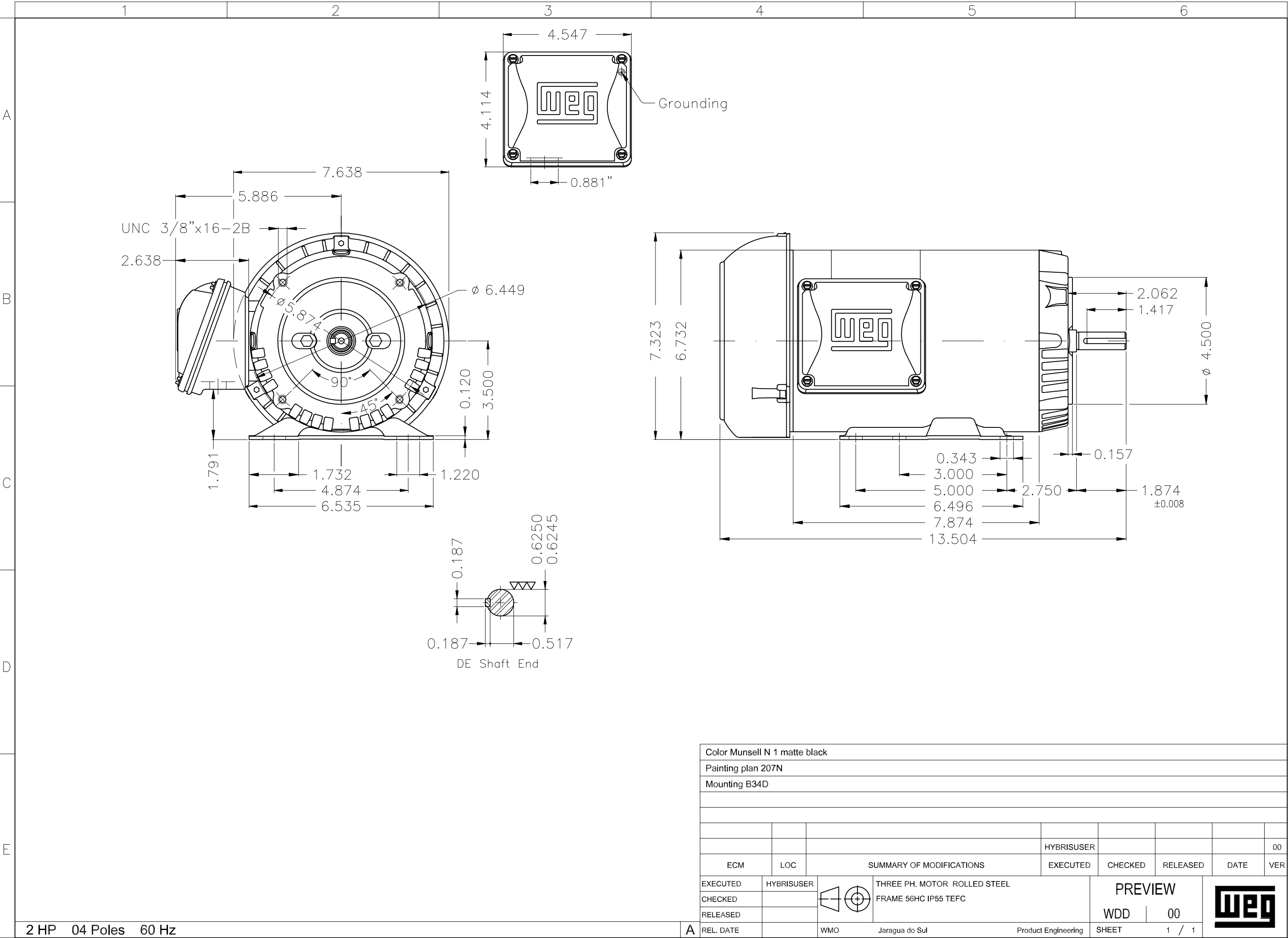


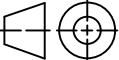

Performance : 220/415 V 50 Hz 4P

Rated current : 4.96/2.63 A
 LRC : 7.7
 Rated torque : 0.751 kgfm
 Locked rotor torque : 280 %
 Breakdown torque : 320 %
 Rated speed : 1450 rpm

Moment of inertia (J) : 0.0052 kgm²
 Duty cycle : Cont.(S1)
 Insulation class : F
 Service factor : 1.15
 Temperature rise : 80 K
 Design : A

Rev.	Changes Summary		Performed	Checked	Date
Performed by				Page	Revision
Checked by				4 / 4	
Date					



Color Munsell N 1 matte black									
Painting plan 207N									
Mounting B34D									
						HYBRISUSER			00
ECM	LOC	SUMMARY OF MODIFICATIONS				EXECUTED	CHECKED	RELEASED	DATE VER
EXECUTED	HYBRISUSER	 THREE PH. MOTOR ROLLED STEEL FRAME 56HC IP55 TEFC				PREVIEW			
CHECKED									
RELEASED									
REL. DATE									
		WMO	Jaragua do Sul	Product Engineering	SHEET	1 / 1			