

DATA SHEET

Three Phase Induction Motor - Squirrel Cage



Customer :				
Product line	: Standard Efficiency Three-Phase			
Product code	: 12894765			
Frame : 56C Insulation class : F Duty cycle : Cont.(S1) Ambient temperature : -20°C to +40°C Altitude : 1000 m.a.s.l. Protection degree : IP55 Design : A	Cooling method : IC411 - TEFC Mounting : F-1 Rotation ¹ : Both (CW and CCW) Starting method : Direct On Line Approx. weight ² : 16.4 kg Moment of inertia (J) : 0.0052 kgm ²			
Output [HP]	2			
Poles	4			
Frequency [Hz]	60			
Rated voltage [V]	230/460			
Rated current [A]	5.70/2.85			
L. R. Amperes [A]	41.6/20.8			
LRC [A]	7.3x(Code K)			
No load current [A]	3.33/1.66			
Rated speed [RPM]	1745			
Slip [%]	3.06			
Rated torque [kgfm]	0.832			
Locked rotor torque [%]	240			
Breakdown torque [%]	270			
Service factor	1.15			
Temperature rise	80 K			
Locked rotor time	14s (cold) 8s (hot)			
Noise level ²	52.0 dB(A)			
Efficiency (%)	25%	78.9		
	50%	80.0		
	75%	81.5		
	100%	82.5		
Power Factor	25%	0.33		
	50%	0.58		
	75%	0.72		
	100%	0.80		
Bearing type : Drive end 6204 ZZ Non drive end 6202 ZZ Sealing : V'Ring Without Bearing Seal Lubrication interval : - Lubricant amount : - Lubricant type : Mobil Polyrex EM	Foundation loads Max. traction : 69 kgf Max. compression : 85 kgf			
Notes USABLE @208V 6.30A SF 1.00 SFA 6.30A				
This revision replaces and cancel the previous one, which must be eliminated. (1) Looking the motor from the shaft end. (2) Measured at 1m and with tolerance of +3dB(A). (3) Approximate weight subject to changes after manufacturing process. (4) At 100% of full load.				
These are average values based on tests with sinusoidal power supply, subject to the tolerances stipulated in NEMA MG-1.				
Rev.	Changes Summary	Performed	Checked	Date
Performed by				
Checked by			Page	Revision
Date	13/05/2022		1 / 4	

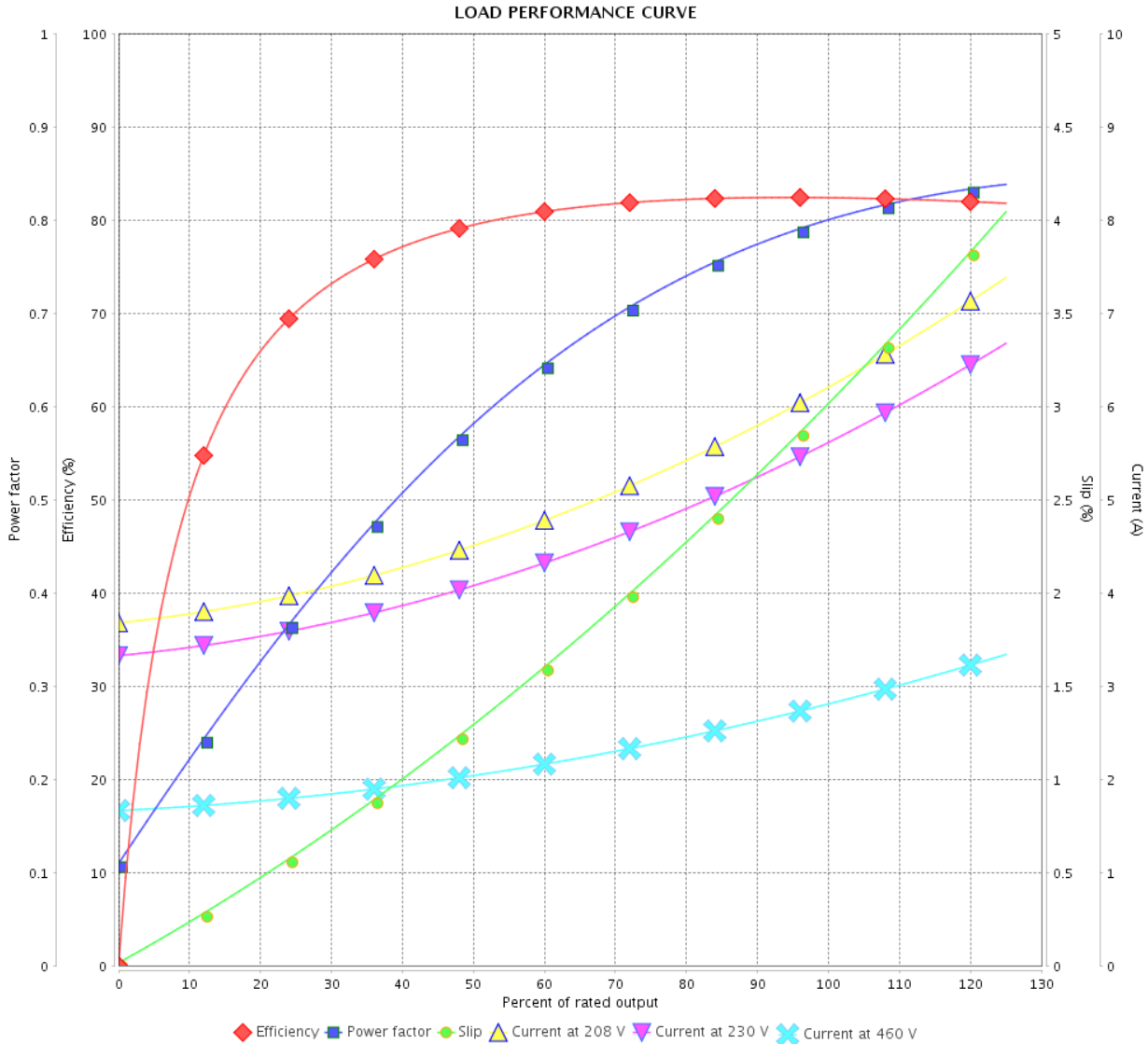
LOAD PERFORMANCE CURVE

Three Phase Induction Motor - Squirrel Cage



Customer :

Product line : Standard Efficiency Three-Phase Product code : 12894765



Performance : 230/460 V 60 Hz 4P

Rated current : 5.70/2.85 A
 LRC : 7.3
 Rated torque : 0.832 kgfm
 Locked rotor torque : 240 %
 Breakdown torque : 270 %
 Rated speed : 1745 rpm

Moment of inertia (J) : 0.0052 kgm²
 Duty cycle : Cont.(S1)
 Insulation class : F
 Service factor :
 Temperature rise : 80 K
 Design : A

Rev.	Changes Summary	Performed	Checked	Date
Performed by			Page	Revision
Checked by				
Date				

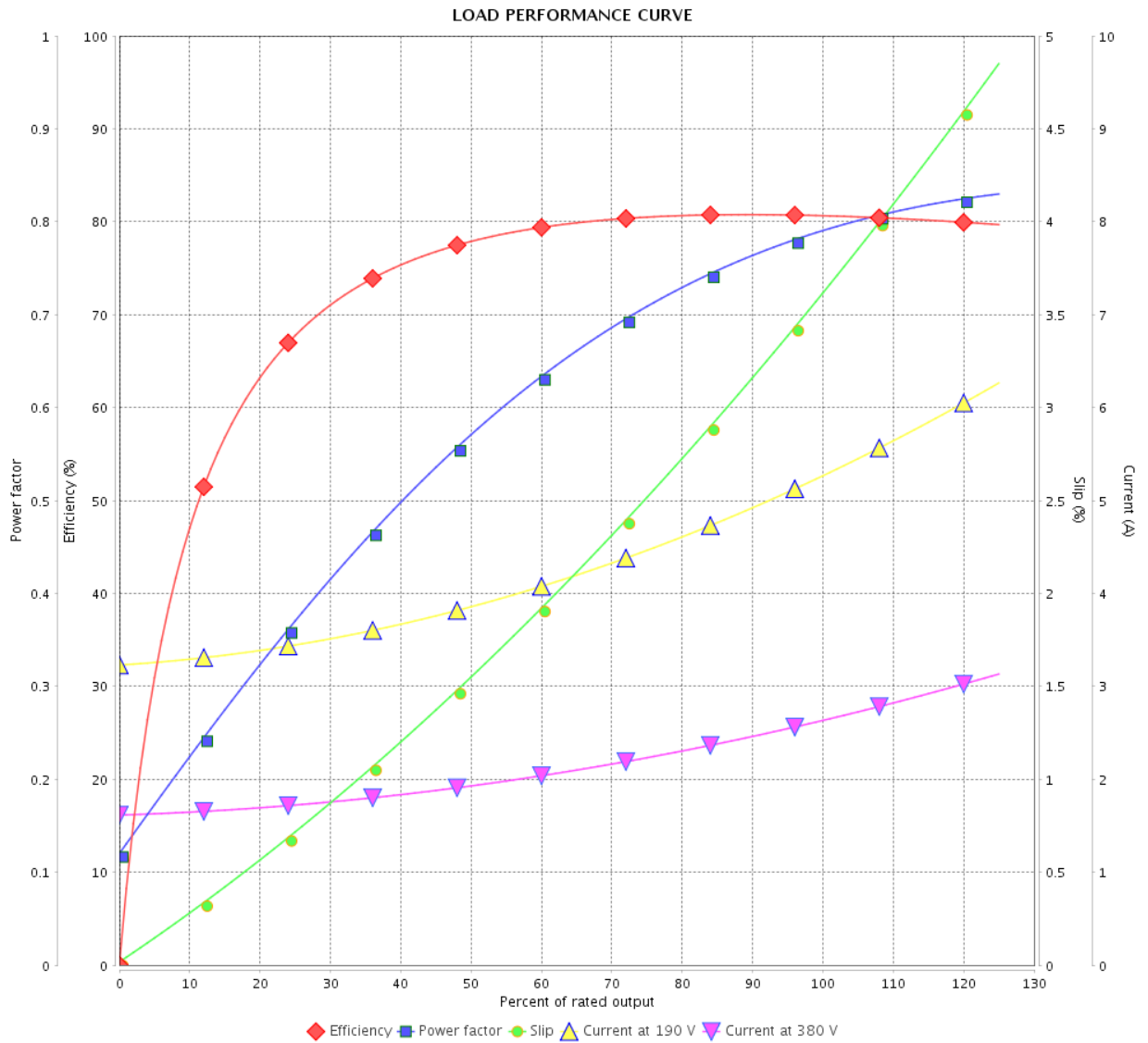
LOAD PERFORMANCE CURVE

Three Phase Induction Motor - Squirrel Cage



Customer : _____

Product line : Standard Efficiency Three-Phase Product code : 12894765



Performance : 190/380 V 50 Hz 4P

Rated current : 5.24/2.62 A
 LRC : 7.3
 Rated torque : 0.753 kgfm
 Locked rotor torque : 250 %
 Breakdown torque : 290 %
 Rated speed : 1445 rpm

Moment of inertia (J) : 0.0052 kgm²
 Duty cycle : Cont.(S1)
 Insulation class : F
 Service factor : 1.15
 Temperature rise : 80 K
 Design : A

Rev.	Changes Summary	Performed	Checked	Date
Performed by			Page	Revision
Checked by				
Date				

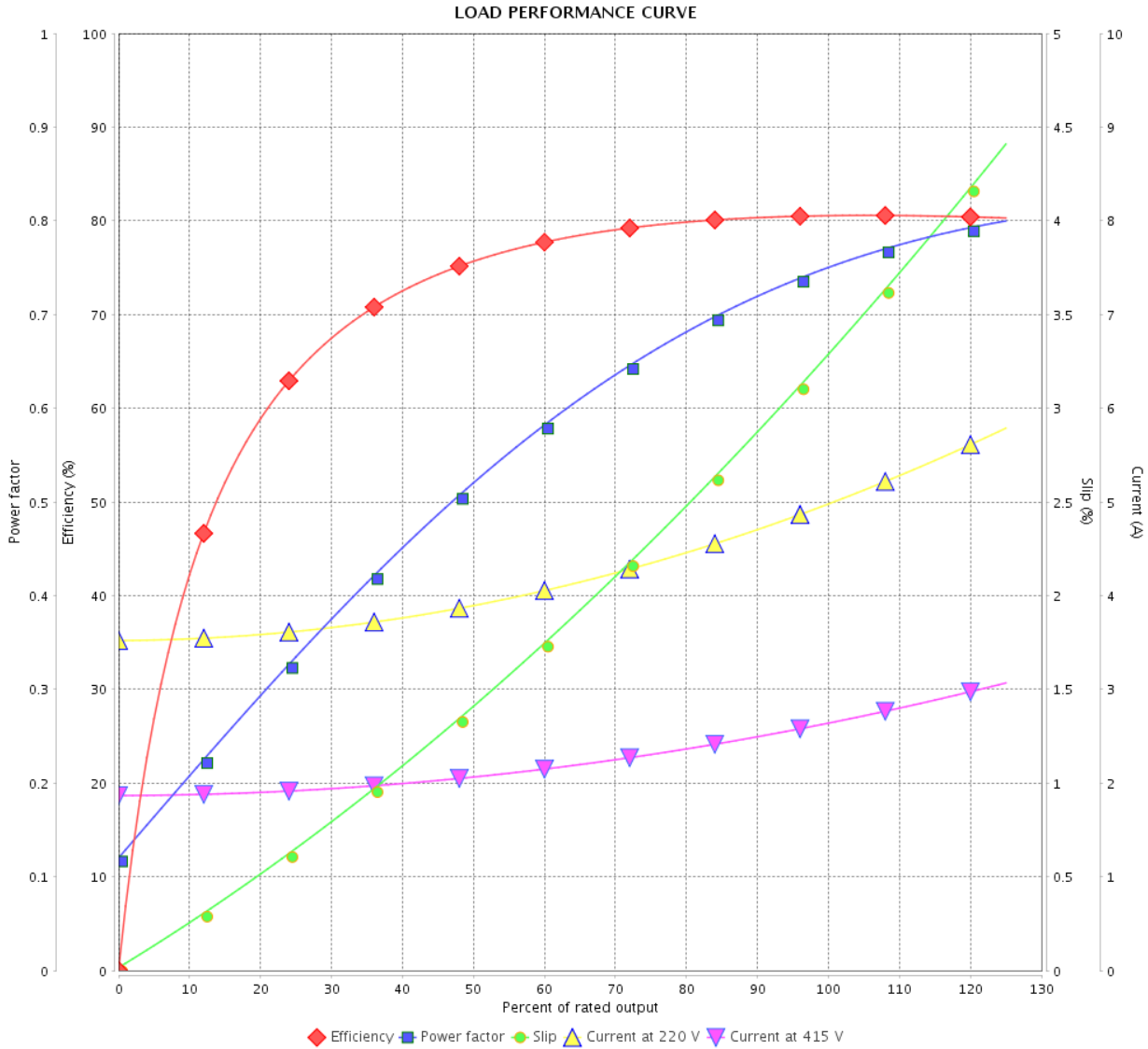
LOAD PERFORMANCE CURVE

Three Phase Induction Motor - Squirrel Cage



Customer : _____

Product line : Standard Efficiency Three-Phase Product code : 12894765



Performance : 220/415 V 50 Hz 4P

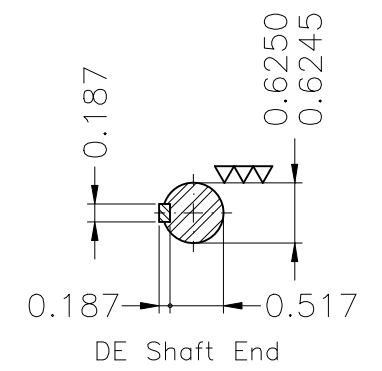
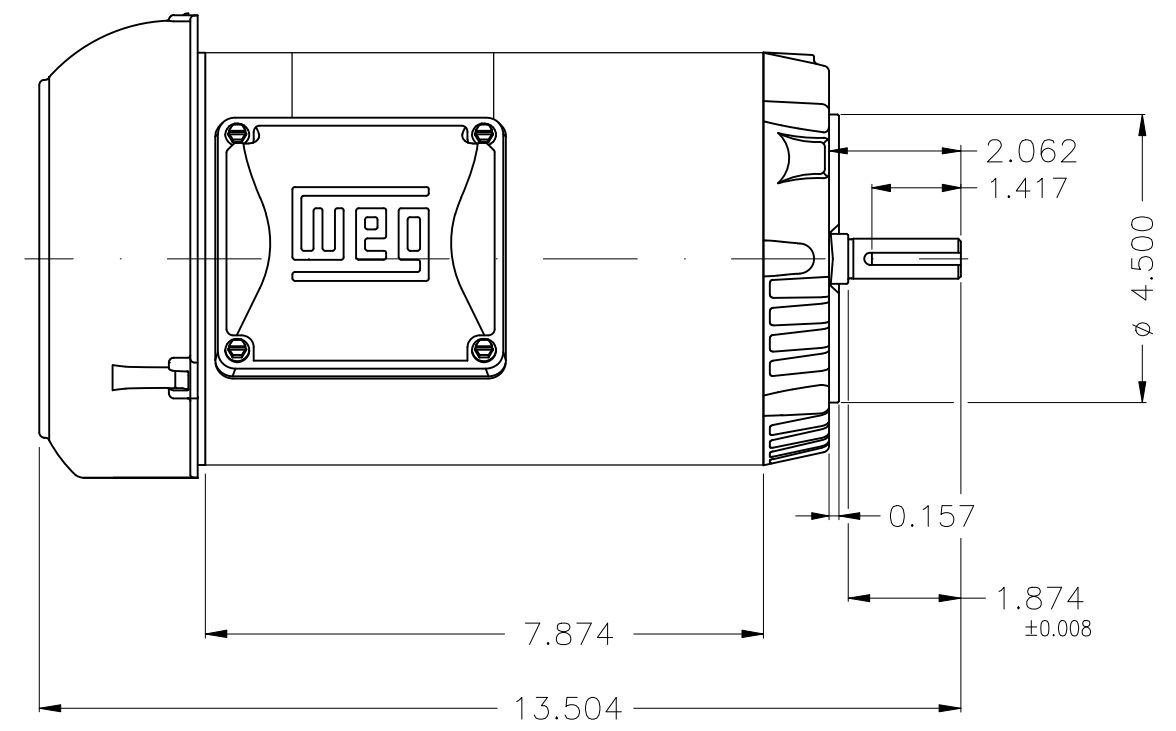
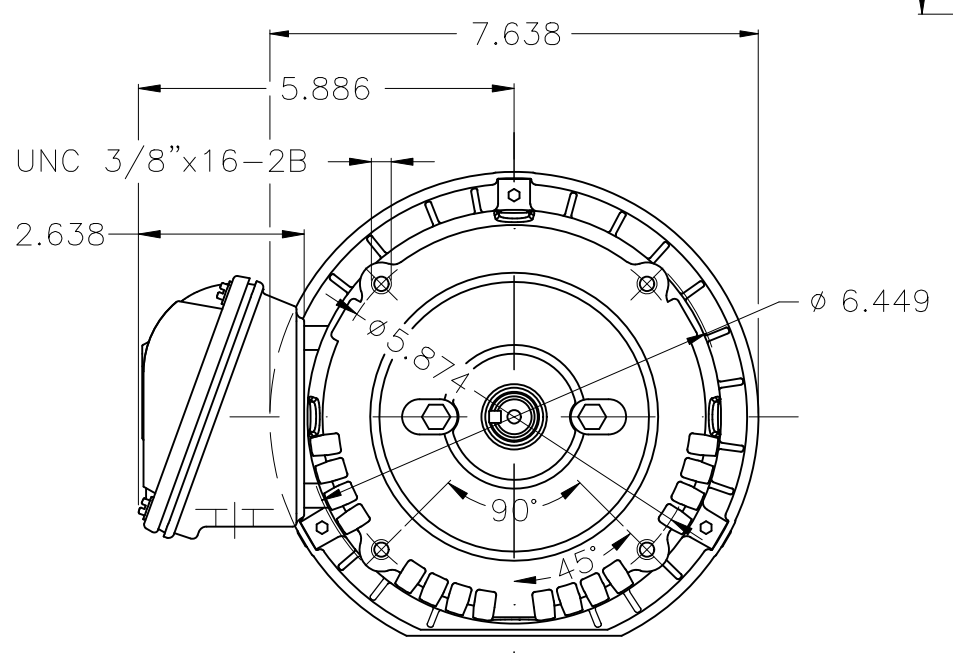
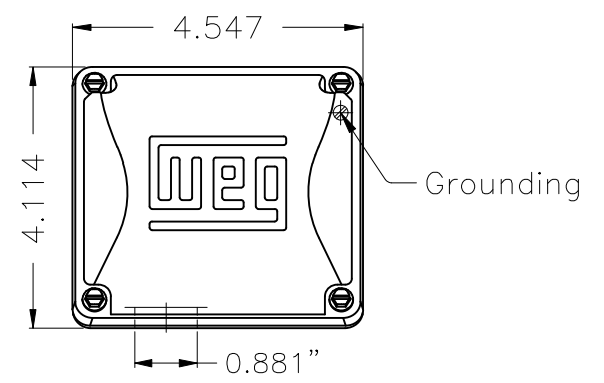
Rated current : 4.96/2.63 A
 LRC : 7.7
 Rated torque : 0.751 kgfm
 Locked rotor torque : 280 %
 Breakdown torque : 320 %
 Rated speed : 1450 rpm

Moment of inertia (J) : 0.0052 kgm²
 Duty cycle : Cont.(S1)
 Insulation class : F
 Service factor : 1.15
 Temperature rise : 80 K
 Design : A

Rev.	Changes Summary	Performed	Checked	Date
Performed by			Page 4 / 4	Revision
Checked by				
Date	13/05/2022			

1 2 3 4 5 6

A
B
C
D
E



Color Munsell N 1 matte black						
Painting plan 207N						
Mounting F-1/B14R(D)						
					HYBRISUSER	00
ECM	LOC	SUMMARY OF MODIFICATIONS		EXECUTED	CHECKED	RELEASED
EXECUTED	HYBRISUSER	THREE PH. MOTOR ROLLED STEEL			PREVIEW	
CHECKED		FRAME 56C IP55 TEFC			WDD	00
RELEASED						
REL. DATE	WMO	Jaragua do Sul	Product Engineering	SHEET	1 / 1	

2 HP 04 Poles 60 Hz

A