

DATA SHEET

Three Phase Induction Motor - Squirrel Cage



Customer	:				
Product line	: Standard Efficiency Three-Phase	Product code :	12894789		
Frame	: 56HC	Cooling method	: IC411 - TEFC		
Insulation class	: F	Mounting	: F-1		
Duty cycle	: Cont.(S1)	Rotation ¹	: Both (CW and CCW)		
Ambient temperature	: -20°C to +40°C	Starting method	: Direct On Line		
Altitude	: 1000 m.a.s.l.	Approx. weight ³	: 15.1 kg		
Protection degree	: IP55	Moment of inertia (J)	: 0.0044 kgm ²		
Design	: A				
Output [HP]	1.5	1.5	1.5		
Poles	4	4	4		
Frequency [Hz]	60	50	50		
Rated voltage [V]	230/460	190/380	220/415		
Rated current [A]	4.46/2.23	5.16/2.58	4.77/2.53		
L. R. Amperes [A]	33.5/16.7	31.0/15.5	30.5/16.2		
LRC [A]	7.5x(Code K)	6.0x(Code H)	6.4x(Code J)		
No load current [A]	3.00/1.50	2.91/1.45	3.17/1.68		
Rated speed [RPM]	1750	1430	1440		
Slip [%]	2.78	4.67	4.00		
Rated torque [kgfm]	0.622	0.761	0.756		
Locked rotor torque [%]	250	190	210		
Breakdown torque [%]	300	220	250		
Service factor		1.00	1.00		
Temperature rise	80 K	105 K	105 K		
Locked rotor time	16s (cold) 9s (hot)	0s (cold) 0s (hot)	0s (cold) 0s (hot)		
Noise level ²	52.0 dB(A)	49.0 dB(A)	49.0 dB(A)		
Efficiency (%)	25%	75.4	78.0	75.0	
	50%	77.0	77.4	75.3	
	75%	80.0	79.1	78.5	
	100%	81.5	77.9	78.3	
Power Factor	25%	0.30	0.36	0.32	
	50%	0.54	0.62	0.57	
	75%	0.67	0.76	0.71	
	100%	0.76	0.83	0.80	
Bearing type	: Drive end : 6204 ZZ	Non drive end : 6202 ZZ	Foundation loads		
Sealing	: V'Ring	Without Bearing Seal	Max. traction	: 53 kgf	
			Max. compression	: 68 kgf	
Lubrication interval	: -	-			
Lubricant amount	: -	-			
Lubricant type	: Mobil Polyrex EM				
Notes					
USABLE @208V 4.93A SF 1.00 SFA 4.93A					
This revision replaces and cancel the previous one, which must be eliminated. (1) Looking the motor from the shaft end. (2) Measured at 1m and with tolerance of +3dB(A). (3) Approximate weight subject to changes after manufacturing process. (4) At 100% of full load.			These are average values based on tests with sinusoidal power supply, subject to the tolerances stipulated in NEMA MG-1.		
Rev.	Changes Summary		Performed	Checked	Date
Performed by					
Checked by				Page	Revision
Date	13/05/2022			1 / 4	

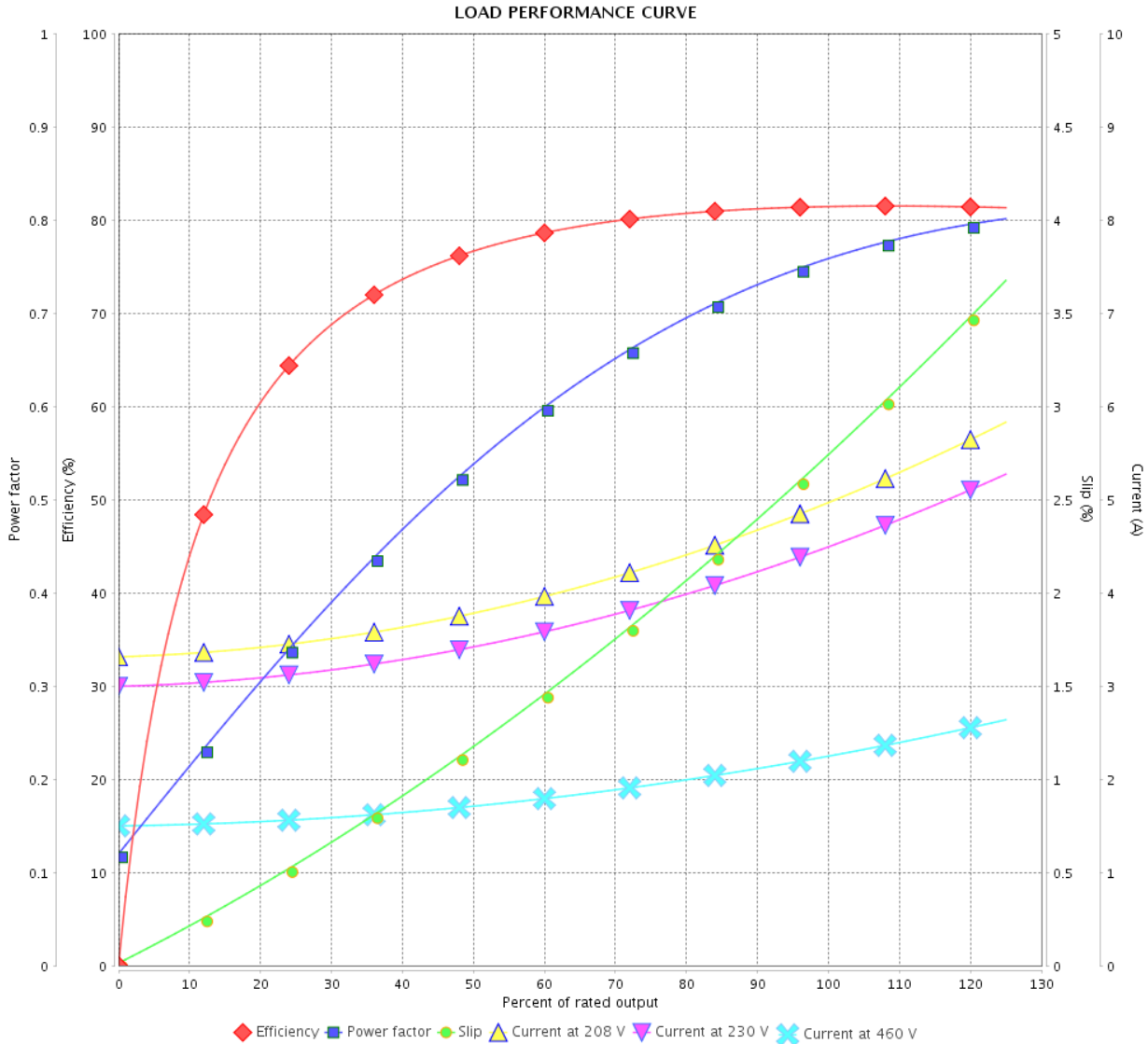
LOAD PERFORMANCE CURVE

Three Phase Induction Motor - Squirrel Cage



Customer :

Product line : Standard Efficiency Three-Phase Product code : 12894789



Performance : 230/460 V 60 Hz 4P

Rated current : 4.46/2.23 A
 LRC : 7.5
 Rated torque : 0.622 kgfm
 Locked rotor torque : 250 %
 Breakdown torque : 300 %
 Rated speed : 1750 rpm

Moment of inertia (J) : 0.0044 kgm²
 Duty cycle : Cont.(S1)
 Insulation class : F
 Service factor :
 Temperature rise : 80 K
 Design : A

Rev.	Changes Summary	Performed	Checked	Date
Performed by			Page 2 / 4	Revision
Checked by				
Date	13/05/2022			

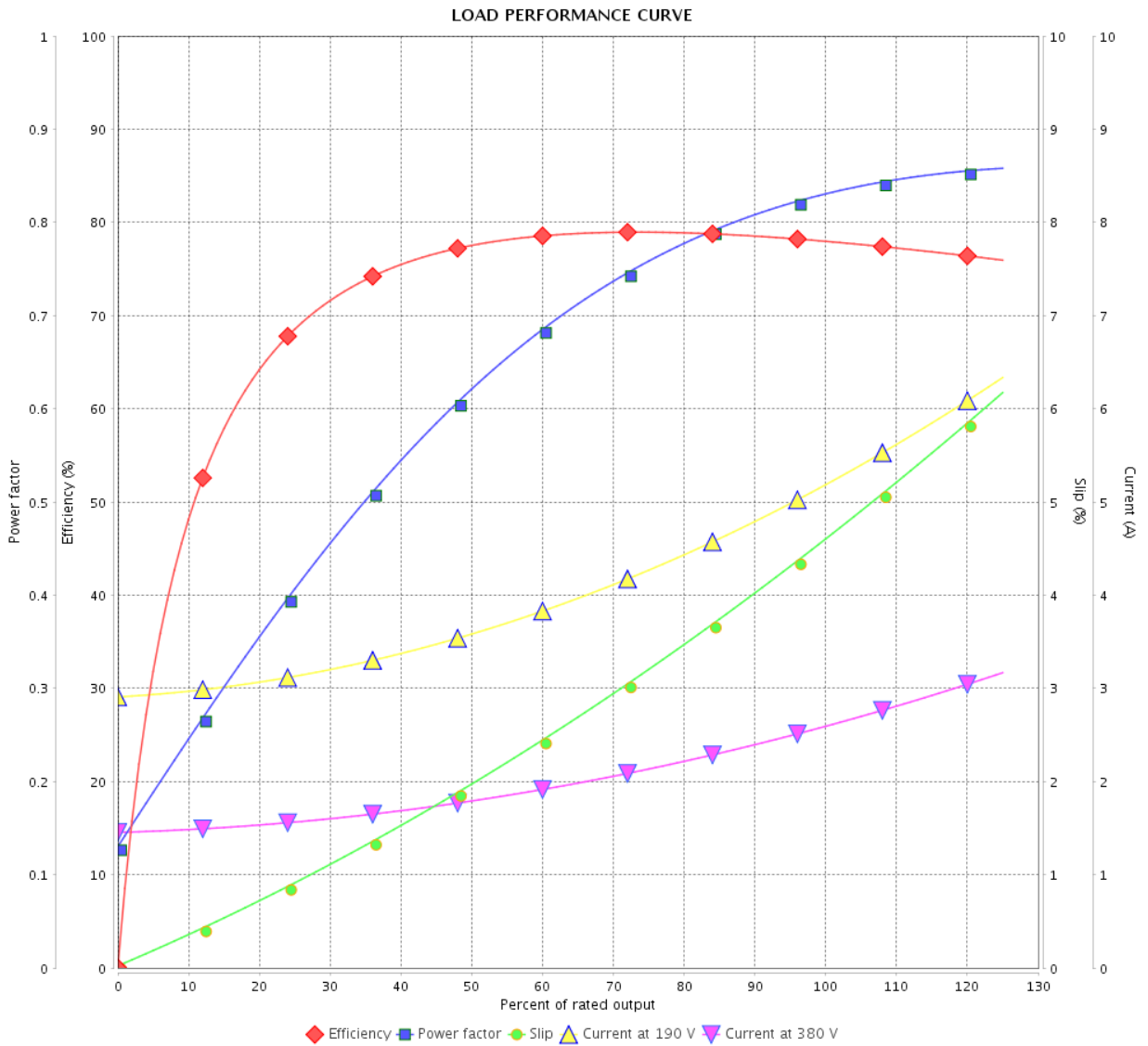
LOAD PERFORMANCE CURVE

Three Phase Induction Motor - Squirrel Cage



Customer : _____

Product line : Standard Efficiency Three-Phase Product code : 12894789



Performance : 190/380 V 50 Hz 4P

Rated current : 5.16/2.58 A
 LRC : 6.0
 Rated torque : 0.761 kgfm
 Locked rotor torque : 190 %
 Breakdown torque : 220 %
 Rated speed : 1430 rpm

Moment of inertia (J) : 0.0044 kgm²
 Duty cycle : Cont.(S1)
 Insulation class : F
 Service factor : 1.00
 Temperature rise : 105 K
 Design : A

Rev.	Changes Summary	Performed	Checked	Date
Performed by			Page 3 / 4	Revision
Checked by				
Date	13/05/2022			

LOAD PERFORMANCE CURVE

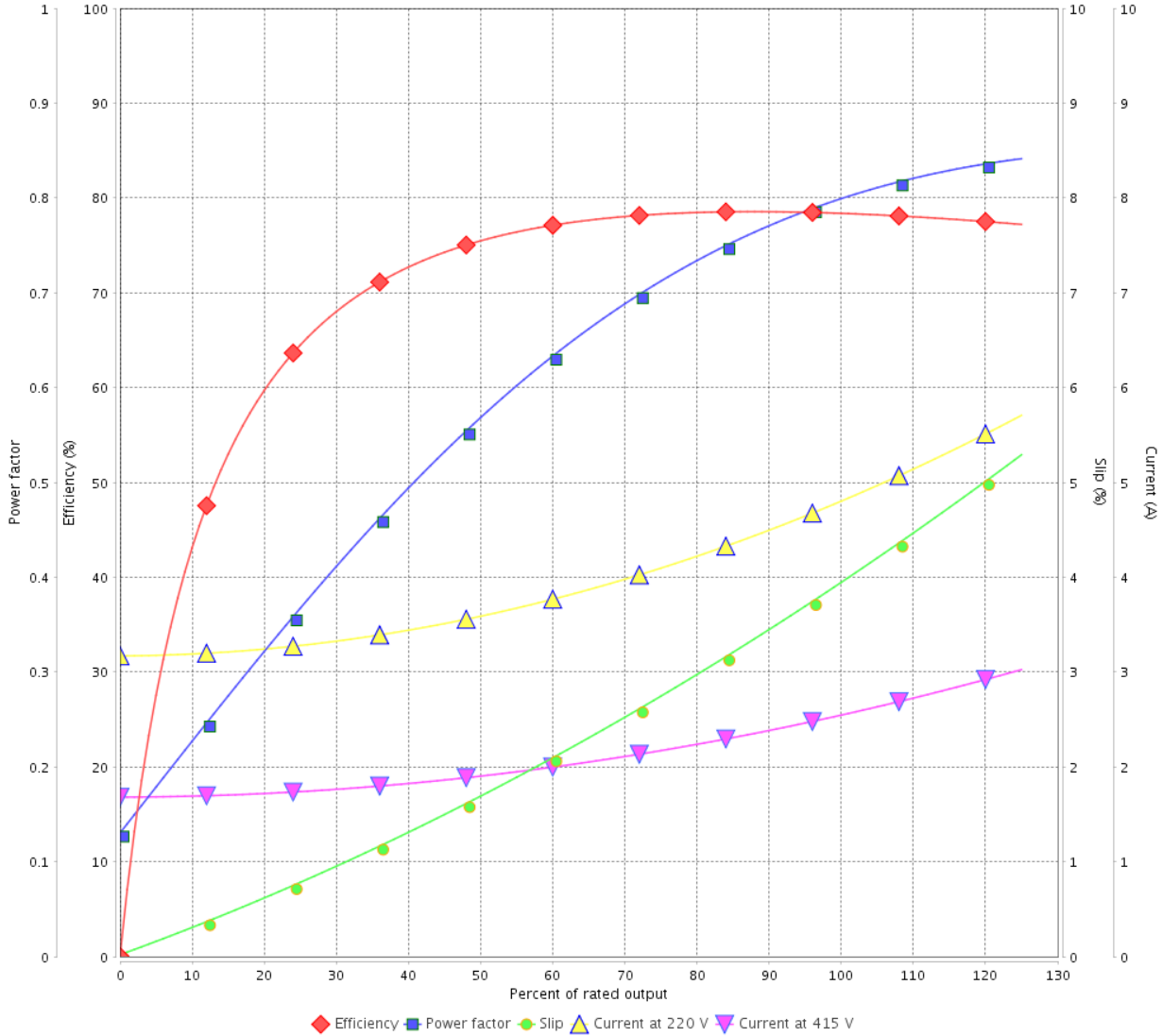
Three Phase Induction Motor - Squirrel Cage



Customer :

Product line : Standard Efficiency Three-Phase Product code : 12894789

LOAD PERFORMANCE CURVE



Performance : 220/415 V 50 Hz 4P

Rated current : 4.77/2.53 A
 LRC : 6.4
 Rated torque : 0.756 kgfm
 Locked rotor torque : 210 %
 Breakdown torque : 250 %
 Rated speed : 1440 rpm

Moment of inertia (J) : 0.0044 kgm²
 Duty cycle : Cont.(S1)
 Insulation class : F
 Service factor : 1.00
 Temperature rise : 105 K
 Design : A

Rev.	Changes Summary	Performed	Checked	Date
Performed by			Page 4 / 4	Revision
Checked by				
Date	13/05/2022			

1 2 3 4 5 6

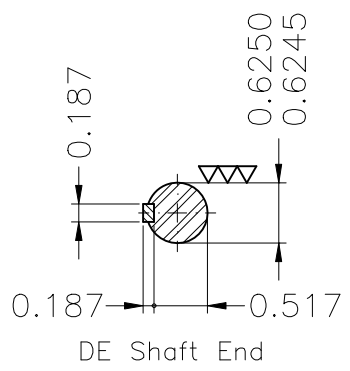
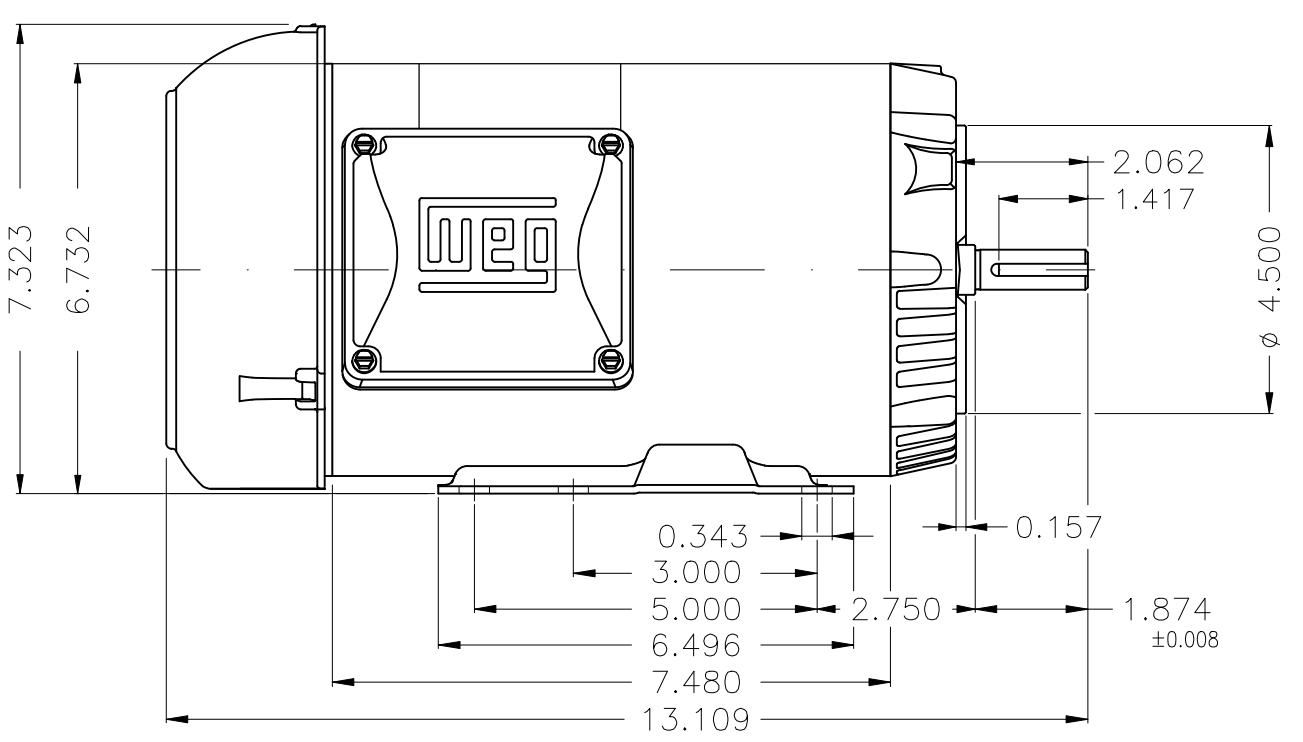
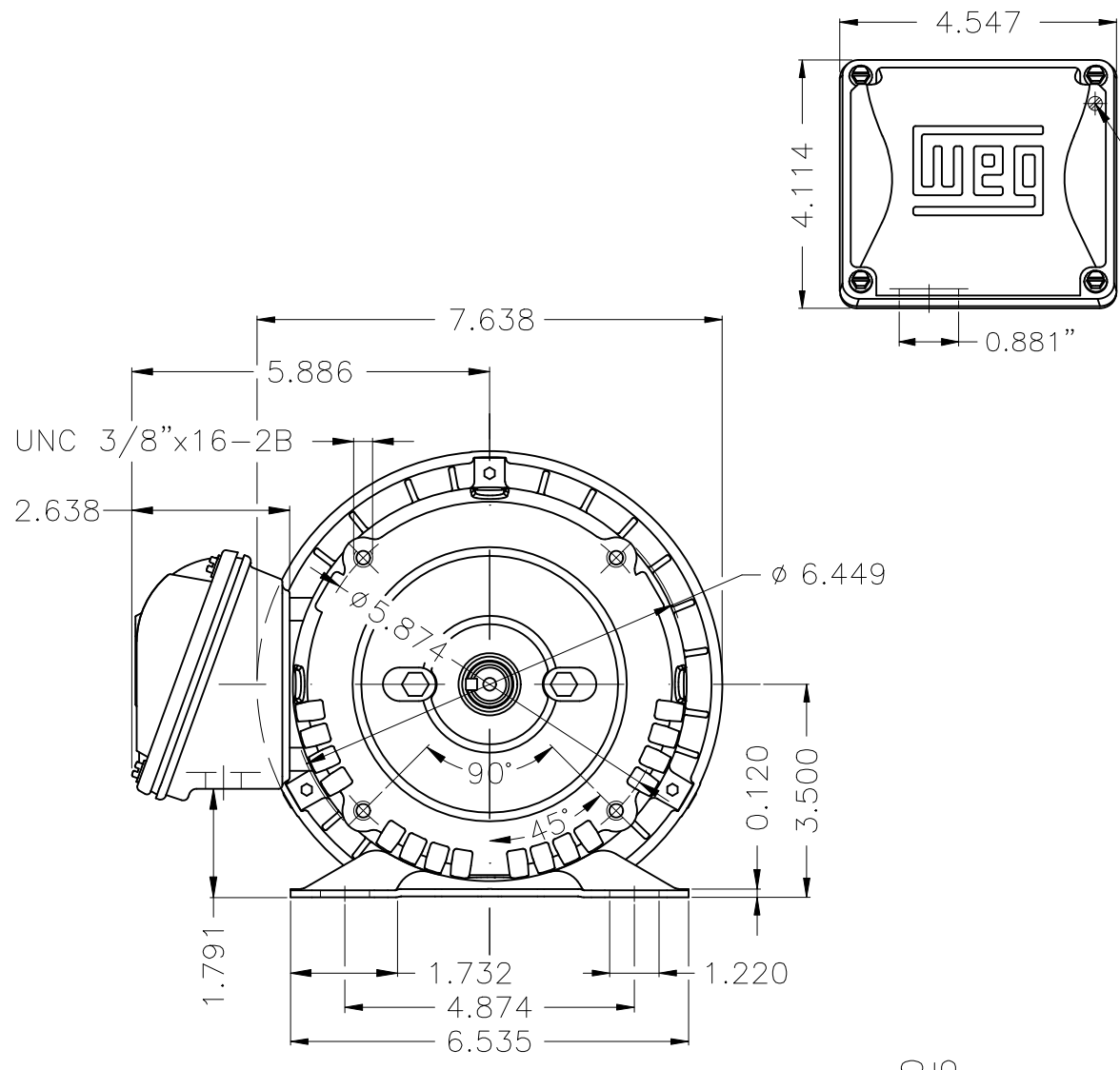
A

B

C

D

E



Color Munsell N 1 matte black									
Painting plan 207N									
Mounting B34D									
					HYBRISUSER	00			
ECM	LOC	SUMMARY OF MODIFICATIONS			EXECUTED	CHECKED	RELEASED	DATE	VER
EXECUTED	HYBRISUSER	THREE PH. MOTOR ROLLED STEEL				PREVIEW WDD 00			
CHECKED		FRAME 56HC IP55 TEFC							
RELEASED									
REL. DATE		WMO	Jaragua do Sul	Product Engineering	SHEET	1 / 1			

1.5 HP 04 Poles 60 Hz

WEG's property. Forbidden reproduction without previous authorization.

Dimensions in inches XME A3