

DATA SHEET

Single Phase Induction Motor - Squirrel Cage



Customer :				
Product line : Single-Phase		Product code : 13386672		
Frame : 56C Insulation class : F Duty cycle : Cont.(S1) Ambient temperature : -20°C to +40°C Altitude : 1000 m.a.s.l. Protection degree : IP55 Design : N		Cooling method : IC411 - TEFC Mounting : F-1 Rotation ¹ : Both (CW and CCW) Starting method : Direct On Line Approx. weight ³ : 13.6 kg Moment of inertia (J) : 0.0033 kgm ²		
Output [HP]	0.75			
Poles	4			
Frequency [Hz]	60			
Rated voltage [V]	115/208-230			
Rated current [A]	10.6/5.86-5.30			
L. R. Amperes [A]	67.8/37.5-33.9			
LRC [A]	6.4x(Code M)			
No load current [A]	8.00/3.45-4.00			
Rated speed [RPM]	1745			
Slip [%]	3.06			
Rated torque [kgfm]	0.312			
Locked rotor torque [%]	300			
Breakdown torque [%]	270			
Service factor				
Temperature rise	80 K			
Locked rotor time	18s (cold) 10s (hot)			
Noise level ²	54.0 dB(A)			
Efficiency (%)	25%			
	50%	57.0		
	75%	65.0		
	100%	68.5		
Power Factor	25%			
	50%	0.47		
	75%	0.58		
	100%	0.67		
Bearing type : Drive end 6203 ZZ Non drive end 6202 ZZ Sealing : V'Ring V'Ring Lubrication interval : - - Lubricant amount : - - Lubricant type : Mobil Polyrex EM		Foundation loads Max. traction : 20 kgf Max. compression : 33 kgf		
Notes				
This revision replaces and cancel the previous one, which must be eliminated. (1) Looking the motor from the shaft end. (2) Measured at 1m and with tolerance of +3dB(A). (3) Approximate weight subject to changes after manufacturing process. (4) At 100% of full load.		These are average values based on tests with sinusoidal power supply, subject to the tolerances stipulated in NEMA MG-1.		
Rev.	Changes Summary		Performed	Checked
Performed by				
Checked by			Page	Revision
Date	13/05/2022		1 / 2	

LOAD PERFORMANCE CURVE

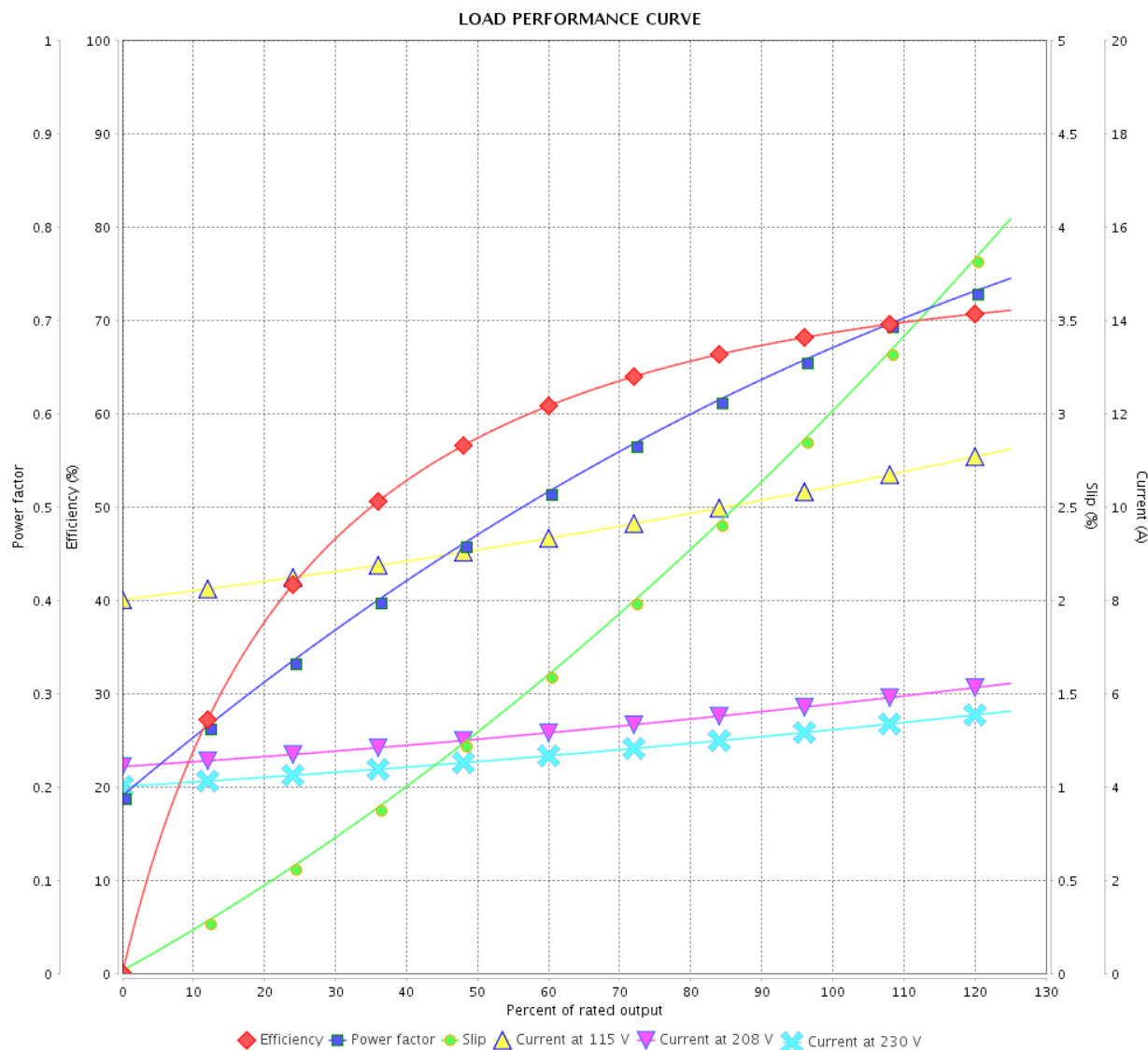
Single Phase Induction Motor - Squirrel Cage



Customer :

Product line : Single-Phase

Product code : 13386672

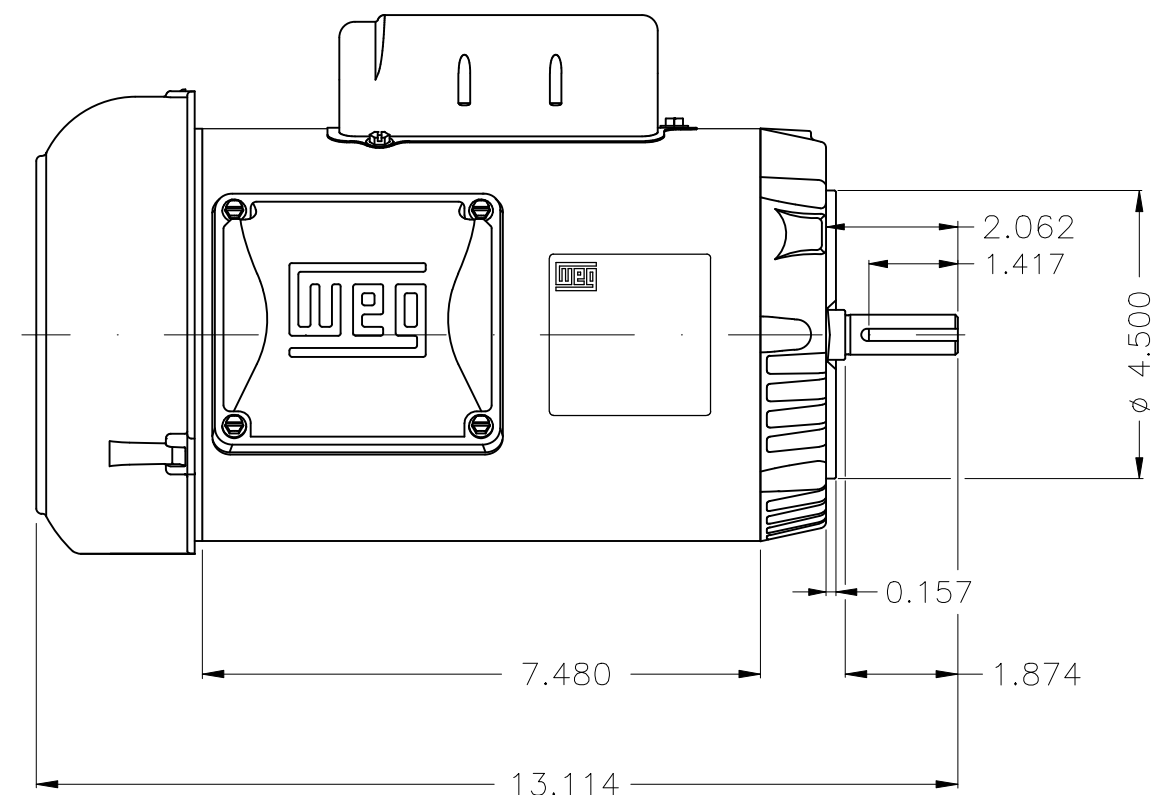
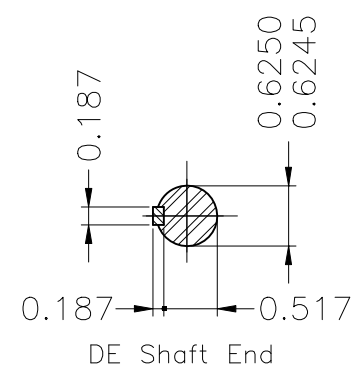
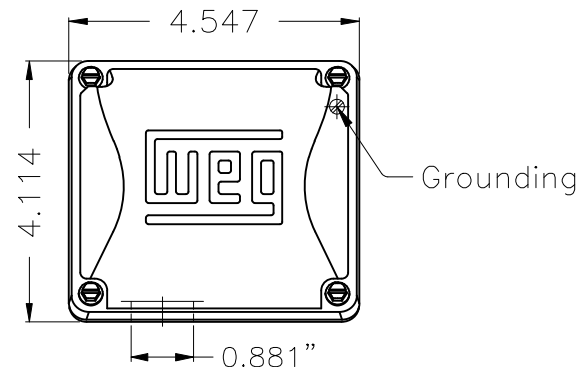


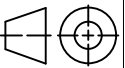

Performance : 115/208-230 V 60 Hz 4P

Rated current : 10.6/5.86-5.30 A
 LRC : 6.4
 Rated torque : 0.312 kgfm
 Locked rotor torque : 300 %
 Breakdown torque : 270 %
 Rated speed : 1745 rpm

Moment of inertia (J) : 0.0033 kgm²
 Duty cycle : Cont.(S1)
 Insulation class : F
 Service factor :
 Temperature rise : 80 K
 Design : N

Rev.	Changes Summary		Performed	Checked	Date
Performed by				Page	Revision
Checked by				2 / 2	
Date					



Design N									
Color Munsell N 1 matte black									
Painting plan 207N									
Mounting F-1/B14R(D)									
			HYBRISUSER						00
ECM	LOC	SUMMARY OF MODIFICATIONS			EXECUTED	CHECKED	RELEASED	DATE	VER
EXECUTED	HYBRISUSER		SINGLE PH. MOTOR ROLLED STEEL FRAME 56C IP55 TEFC			PREVIEW WDD 00			
CHECKED									
RELEASED									
REL. DATE		WMO	Jaragua do Sul	Product Engineering	SHEET	1 / 1			