

# DATA SHEET

## Three Phase Induction Motor - Squirrel Cage



Customer :

Product line : Standard Efficiency Three-Phase Product code : 13760277

Frame	: W56C	Cooling method	: IC411 - TEFC
Insulation class	: F	Mounting	: F-1
Duty cycle	: Cont.(S1)	Rotation <sup>1</sup>	: Both (CW and CCW)
Ambient temperature	: -20°C to +40°C	Starting method	: Direct On Line
Altitude	: 1000 m.a.s.l.	Approx. weight <sup>3</sup>	: 10.5 kg
Protection degree	: IP55	Moment of inertia (J)	: 0.0024 kgm <sup>2</sup>

Output [HP]	0.5	0.33	0.33
Poles	6	6	6
Frequency [Hz]	60	50	50
Rated voltage [V]	208-230/460	190/380	220/415
Rated current [A]	2.20-1.98/0.990	1.80/0.899	1.80/0.952
L. R. Amperes [A]	9.68-8.71/4.36	7.73/3.87	7.90/4.19
LRC [A]	4.4x(Code H)	4.3x(Code J)	4.4x(Code L)
No load current [A]	1.34-1.55/0.775	1.52/0.760	1.71/0.907
Rated speed [RPM]	1130	945	955
Slip [%]	5.83	5.50	4.50
Rated torque [kgfm]	0.321	0.253	0.251
Locked rotor torque [%]	200	220	270
Breakdown torque [%]	240	250	310
Service factor		1.15	1.15
Temperature rise	80 K	80 K	80 K
Locked rotor time	30s (cold) 17s (hot)	43s (cold) 24s (hot)	34s (cold) 19s (hot)
Noise level <sup>2</sup>	48.0 dB(A)	47.0 dB(A)	47.0 dB(A)
Efficiency (%)	25%		
	50%	59.5	55.0
	75%	66.0	63.0
	100%	68.0	65.0
Power Factor	25%		
	50%	0.47	0.44
	75%	0.59	0.55
	100%	0.69	0.65

	<u>Drive end</u>	<u>Non drive end</u>	Foundation loads
Bearing type	: 6203 ZZ	6202 ZZ	Max. traction : 19 kgf
Sealing	: V'Ring	V'Ring	Max. compression : 30 kgf
Lubrication interval	: -	-	
Lubricant amount	: -	-	
Lubricant type	: Mobil Polyrex EM		

Notes  
USABLE @208V SF 1.00

This revision replaces and cancel the previous one, which must be eliminated.

- (1) Looking the motor from the shaft end.
- (2) Measured at 1m and with tolerance of +3dB(A).
- (3) Approximate weight subject to changes after manufacturing process.
- (4) At 100% of full load.

These are average values based on tests with sinusoidal power supply, subject to the tolerances stipulated in NEMA MG-1.

Rev.	Changes Summary	Performed	Checked	Date
Performed by				
Checked by				
Date	13/05/2022			
		Page 1 / 4		Revision

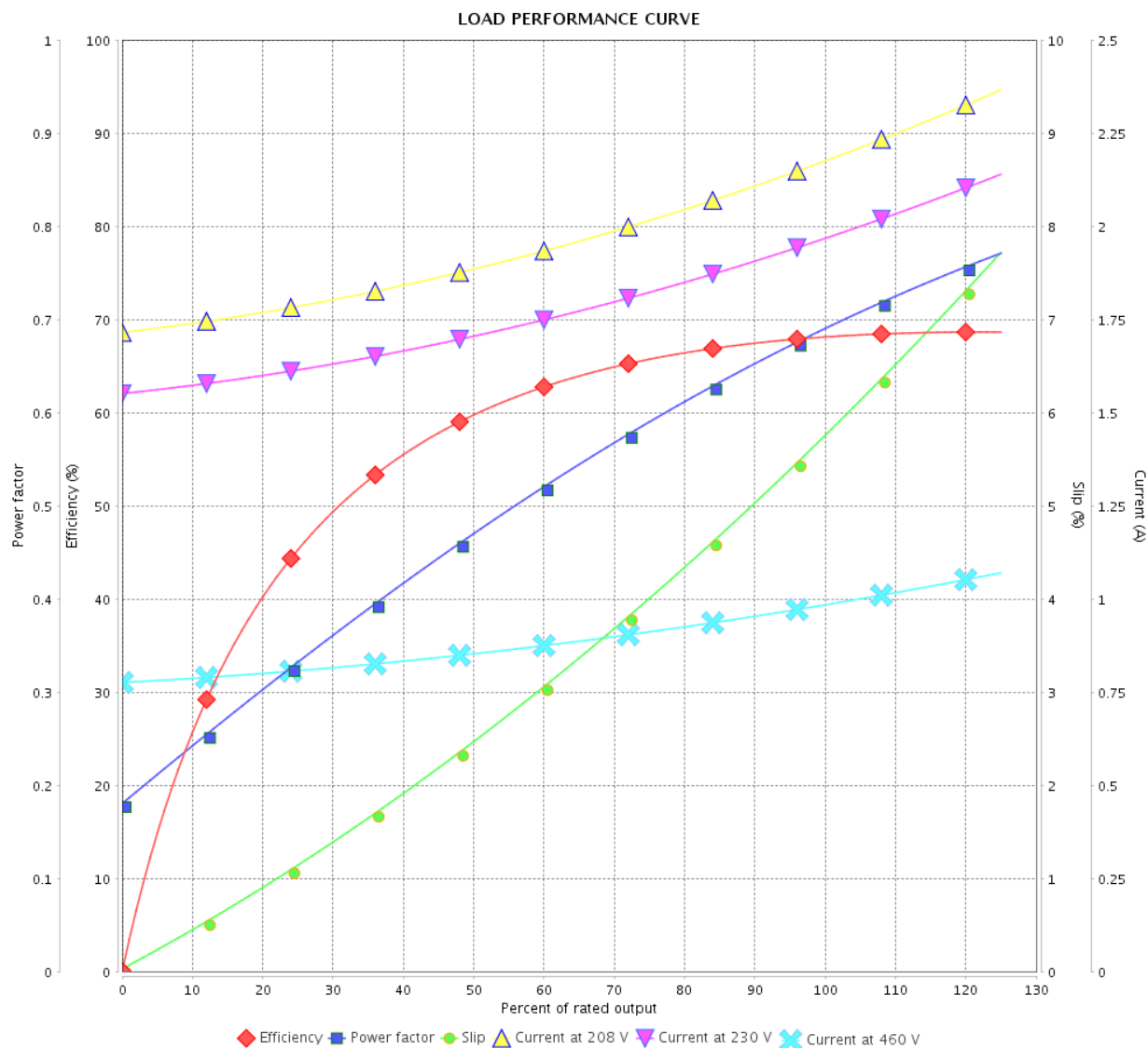
# LOAD PERFORMANCE CURVE

## Three Phase Induction Motor - Squirrel Cage



Customer :

Product line : Standard Efficiency Three-Phase Product code : 13760277



Performance : 208-230/460 V 60 Hz 6P

Rated current : 2.20-1.98/0.990 A  
 LRC : 4.4  
 Rated torque : 0.321 kgfm  
 Locked rotor torque : 200 %  
 Breakdown torque : 240 %  
 Rated speed : 1130 rpm

Moment of inertia (J) : 0.0024 kgm<sup>2</sup>  
 Duty cycle : Cont.(S1)  
 Insulation class : F  
 Service factor :  
 Temperature rise : 80 K

Rev.	Changes Summary		Performed	Checked	Date
Performed by				Page	Revision
Checked by				2 / 4	
Date					

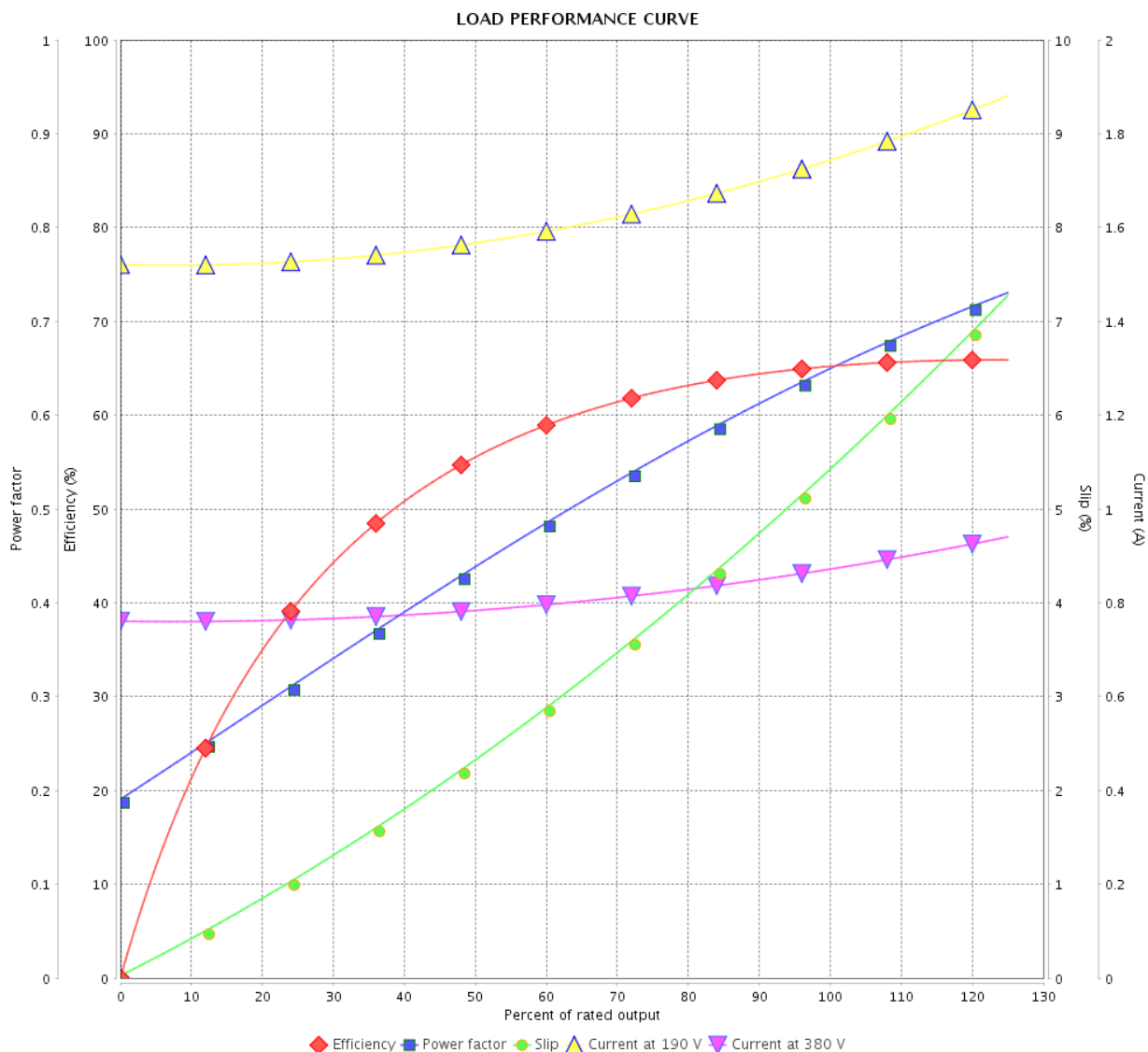
# LOAD PERFORMANCE CURVE

## Three Phase Induction Motor - Squirrel Cage



Customer :

Product line : Standard Efficiency Three-Phase Product code : 13760277



Performance : 190/380 V 50 Hz 6P

Rated current : 1.80/0.899 A  
 LRC : 4.3  
 Rated torque : 0.253 kgfm  
 Locked rotor torque : 220 %  
 Breakdown torque : 250 %  
 Rated speed : 945 rpm

Moment of inertia (J) : 0.0024 kgm<sup>2</sup>  
 Duty cycle : Cont.(S1)  
 Insulation class : F  
 Service factor : 1.15  
 Temperature rise : 80 K

Rev.	Changes Summary	Performed	Checked	Date
Performed by		Page 3 / 4Revision		
Checked by				
Date	13/05/2022			

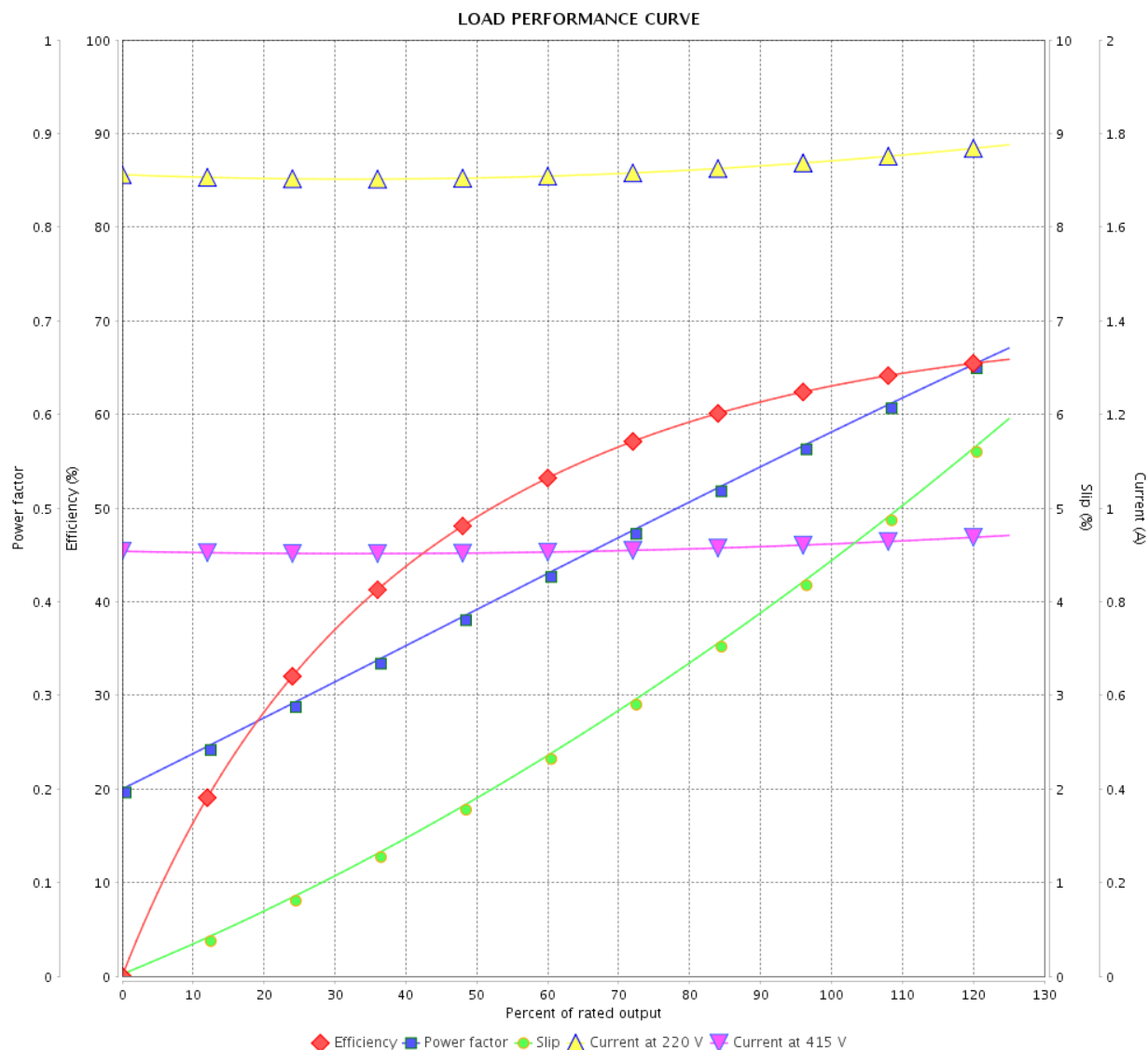
# LOAD PERFORMANCE CURVE

Three Phase Induction Motor - Squirrel Cage



Customer :

Product line : Standard Efficiency Three-Phase Product code : 13760277

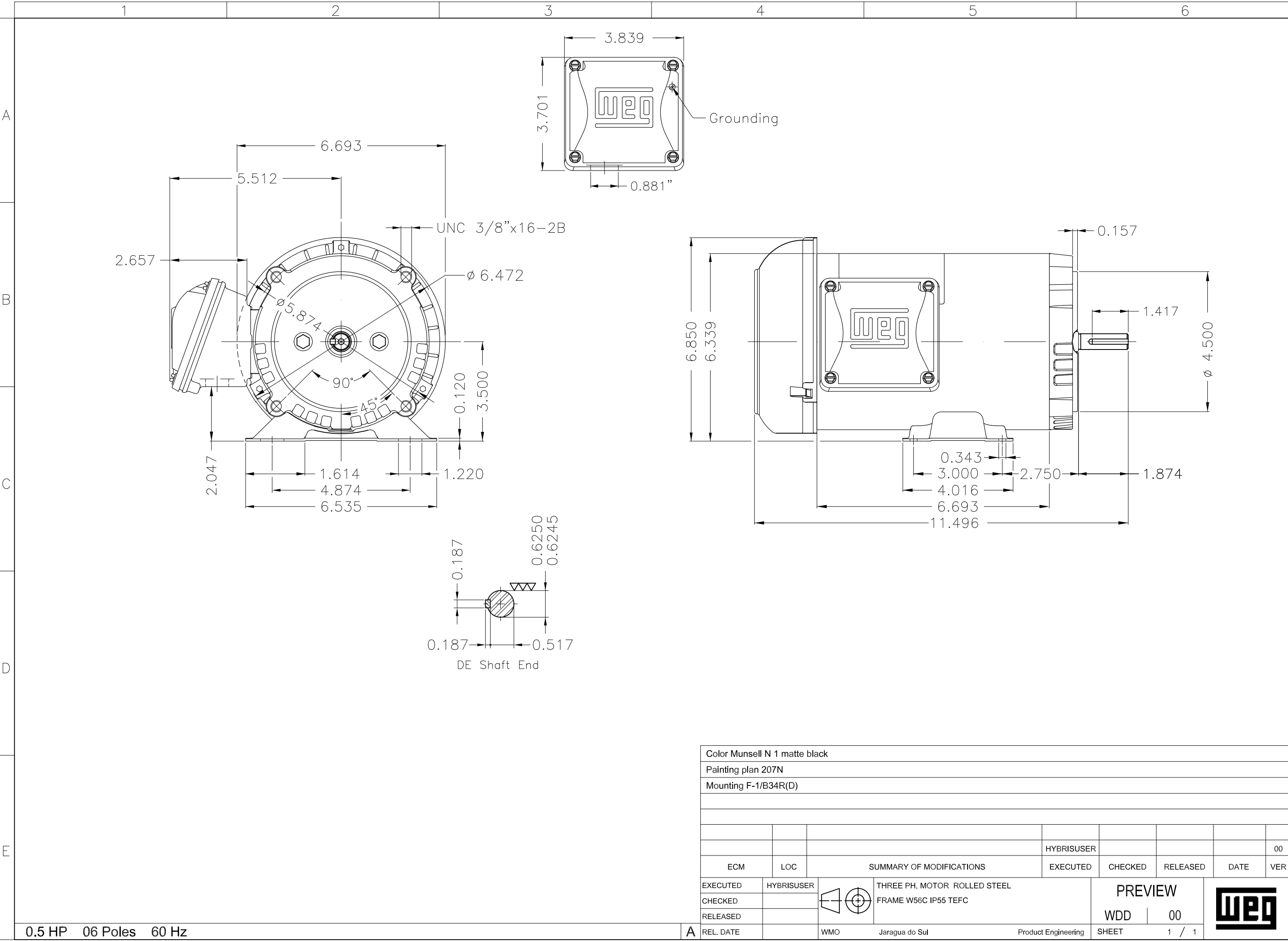


Performance : 220/415 V 50 Hz 6P

Rated current : 1.80/0.952 A  
 LRC : 4.4  
 Rated torque : 0.251 kgfm  
 Locked rotor torque : 270 %  
 Breakdown torque : 310 %  
 Rated speed : 955 rpm

Moment of inertia (J) : 0.0024 kgm<sup>2</sup>  
 Duty cycle : Cont.(S1)  
 Insulation class : F  
 Service factor : 1.15  
 Temperature rise : 80 K

Rev.	Changes Summary	Performed	Checked	Date
Performed by		<div>Page 4 / 4</div> <div>Revision</div>		
Checked by				
Date	13/05/2022			



Color Munsell N 1 matte black									
Painting plan 207N									
Mounting F-1/B34R(D)									