

DATA SHEET

Three Phase Induction Motor - Squirrel Cage



Customer :

Product line : Standard Efficiency Three-Phase Product code : 13760388

Frame	: W56C	Cooling method	: IC411 - TEFC
Insulation class	: F	Mounting	: F-1
Duty cycle	: Cont.(S1)	Rotation ¹	: Both (CW and CCW)
Ambient temperature	: -20°C to +40°C	Starting method	: Direct On Line
Altitude	: 1000 m.a.s.l.	Approx. weight ³	: 9.9 kg
Protection degree	: IP55	Moment of inertia (J)	: 0.0024 kgm ²

Output [HP]	0.5	0.33	0.33
Poles	6	6	6
Frequency [Hz]	60	50	50
Rated voltage [V]	208-230/460	190/380	220/415
Rated current [A]	2.20-1.98/0.990	1.80/0.899	1.80/0.952
L. R. Amperes [A]	9.68-8.71/4.36	7.73/3.87	7.90/4.19
LRC [A]	4.4x(Code H)	4.3x(Code J)	4.4x(Code L)
No load current [A]	1.34-1.55/0.775	1.52/0.760	1.71/0.907
Rated speed [RPM]	1130	945	955
Slip [%]	5.83	5.50	4.50
Rated torque [kgfm]	0.321	0.253	0.251
Locked rotor torque [%]	200	220	270
Breakdown torque [%]	240	250	310
Service factor		1.15	1.15
Temperature rise	80 K	80 K	80 K
Locked rotor time	30s (cold) 17s (hot)	43s (cold) 24s (hot)	34s (cold) 19s (hot)
Noise level ²	48.0 dB(A)	47.0 dB(A)	47.0 dB(A)
Efficiency (%)	25%		
	50%	59.5	55.0
	75%	66.0	63.0
	100%	68.0	65.0
Power Factor	25%		
	50%	0.47	0.44
	75%	0.59	0.55
	100%	0.69	0.65

	<u>Drive end</u>	<u>Non drive end</u>	Foundation loads
Bearing type	: 6203 ZZ	6202 ZZ	Max. traction : 20 kgf
Sealing	: V'Ring	V'Ring	Max. compression : 30 kgf
Lubrication interval	: -	-	
Lubricant amount	: -	-	
Lubricant type	: Mobil Polyrex EM		

Notes
USABLE @208V SF 1.00

This revision replaces and cancel the previous one, which must be eliminated.

- (1) Looking the motor from the shaft end.
- (2) Measured at 1m and with tolerance of +3dB(A).
- (3) Approximate weight subject to changes after manufacturing process.
- (4) At 100% of full load.

These are average values based on tests with sinusoidal power supply, subject to the tolerances stipulated in NEMA MG-1.

Rev.	Changes Summary	Performed	Checked	Date
Performed by				
Checked by				
Date	13/05/2022			
		Page 1 / 4		Revision

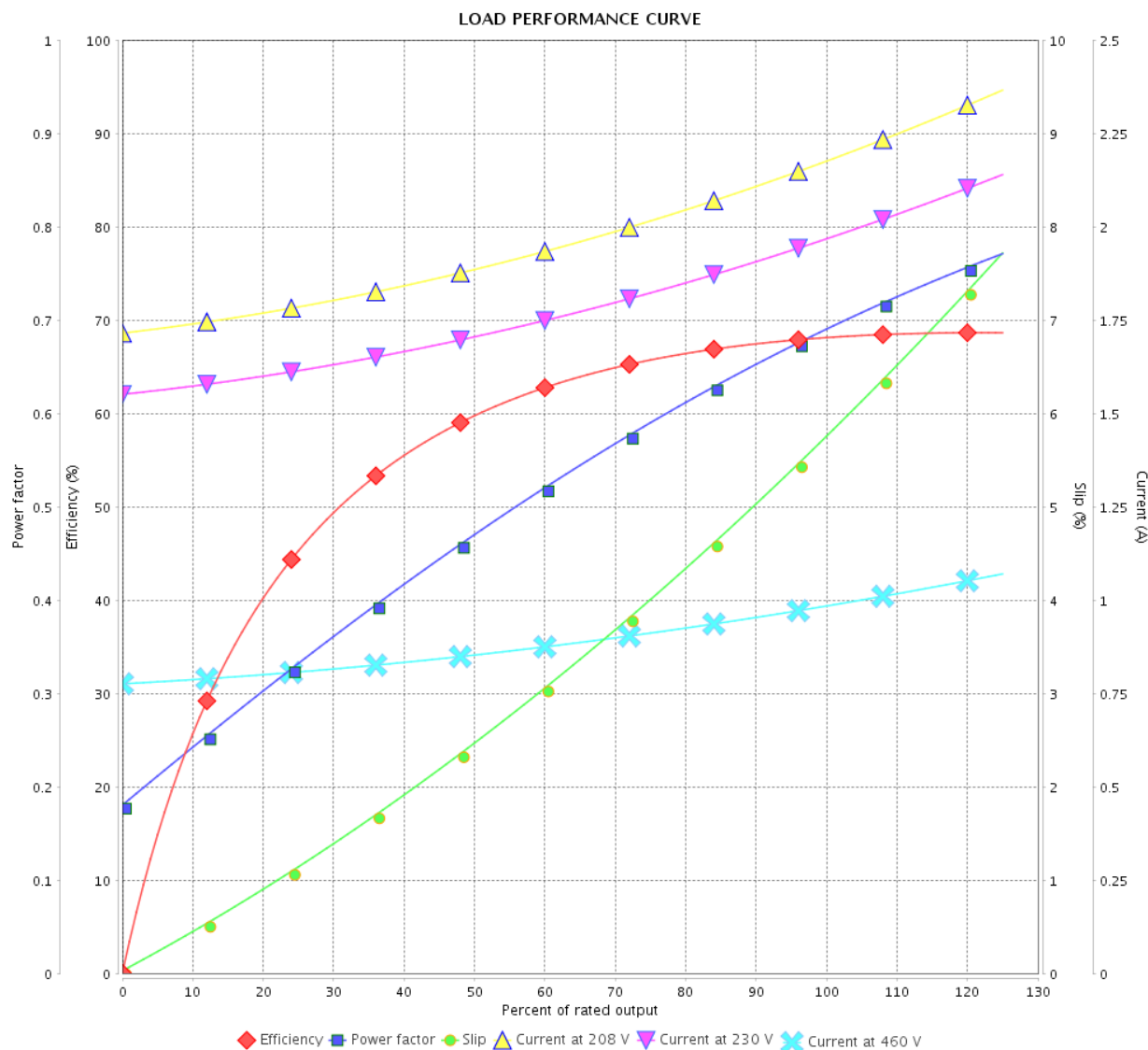
LOAD PERFORMANCE CURVE

Three Phase Induction Motor - Squirrel Cage



Customer :

Product line : Standard Efficiency Three-Phase Product code : 13760388



Performance : 208-230/460 V 60 Hz 6P

Rated current : 2.20-1.98/0.990 A
 LRC : 4.4
 Rated torque : 0.321 kgfm
 Locked rotor torque : 200 %
 Breakdown torque : 240 %
 Rated speed : 1130 rpm

Moment of inertia (J) : 0.0024 kgm²
 Duty cycle : Cont.(S1)
 Insulation class : F
 Service factor :
 Temperature rise : 80 K

Rev.	Changes Summary		Performed	Checked	Date
Performed by				Page	Revision
Checked by				2 / 4	
Date					

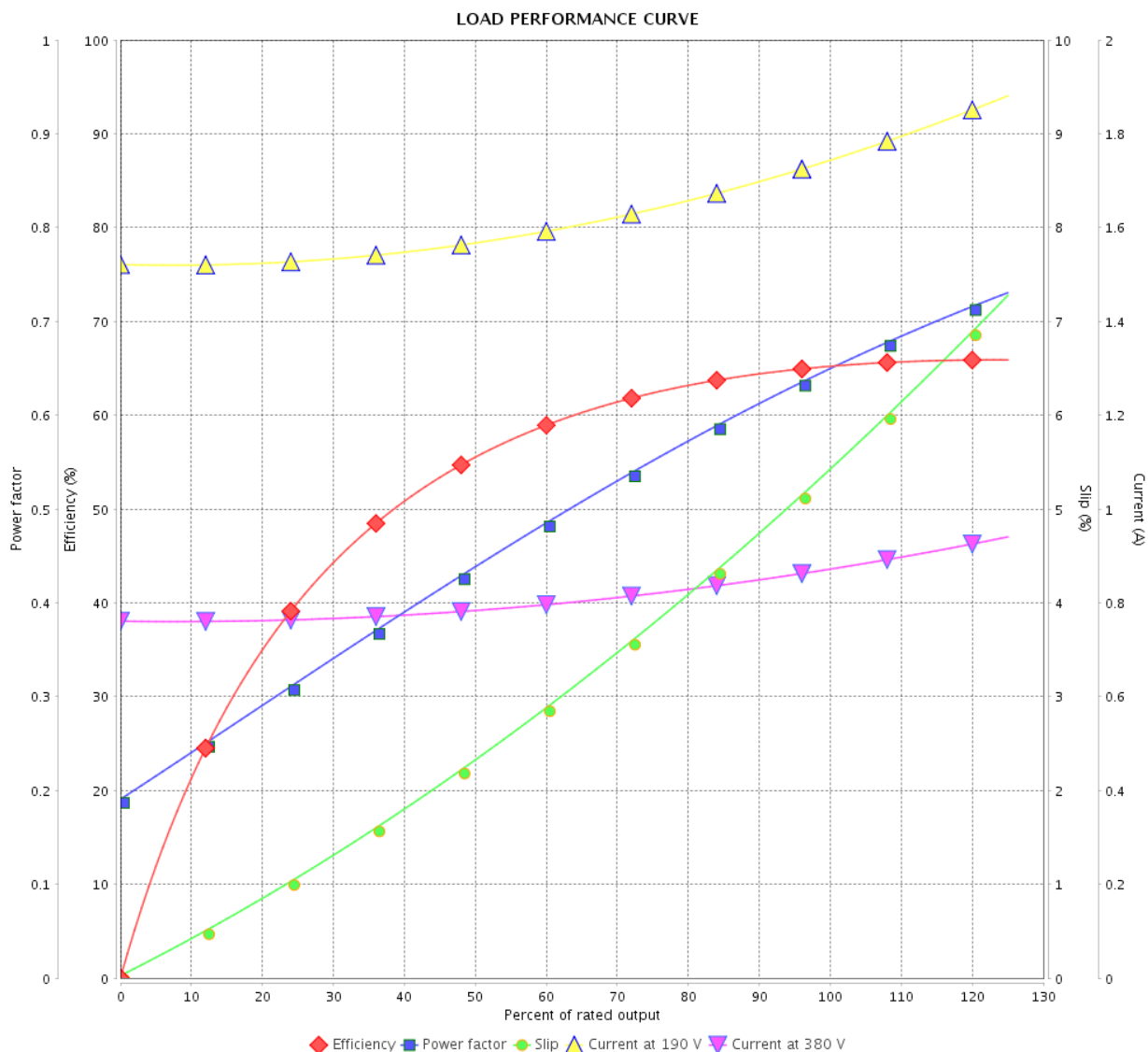
LOAD PERFORMANCE CURVE

Three Phase Induction Motor - Squirrel Cage



Customer :

Product line : Standard Efficiency Three-Phase Product code : 13760388



Performance : 190/380 V 50 Hz 6P

Rated current : 1.80/0.899 A
 LRC : 4.3
 Rated torque : 0.253 kgfm
 Locked rotor torque : 220 %
 Breakdown torque : 250 %
 Rated speed : 945 rpm

Moment of inertia (J) : 0.0024 kgm²
 Duty cycle : Cont.(S1)
 Insulation class : F
 Service factor : 1.15
 Temperature rise : 80 K

Rev.	Changes Summary	Performed	Checked	Date
Performed by		Page 3 / 4Revision		
Checked by				
Date	13/05/2022			

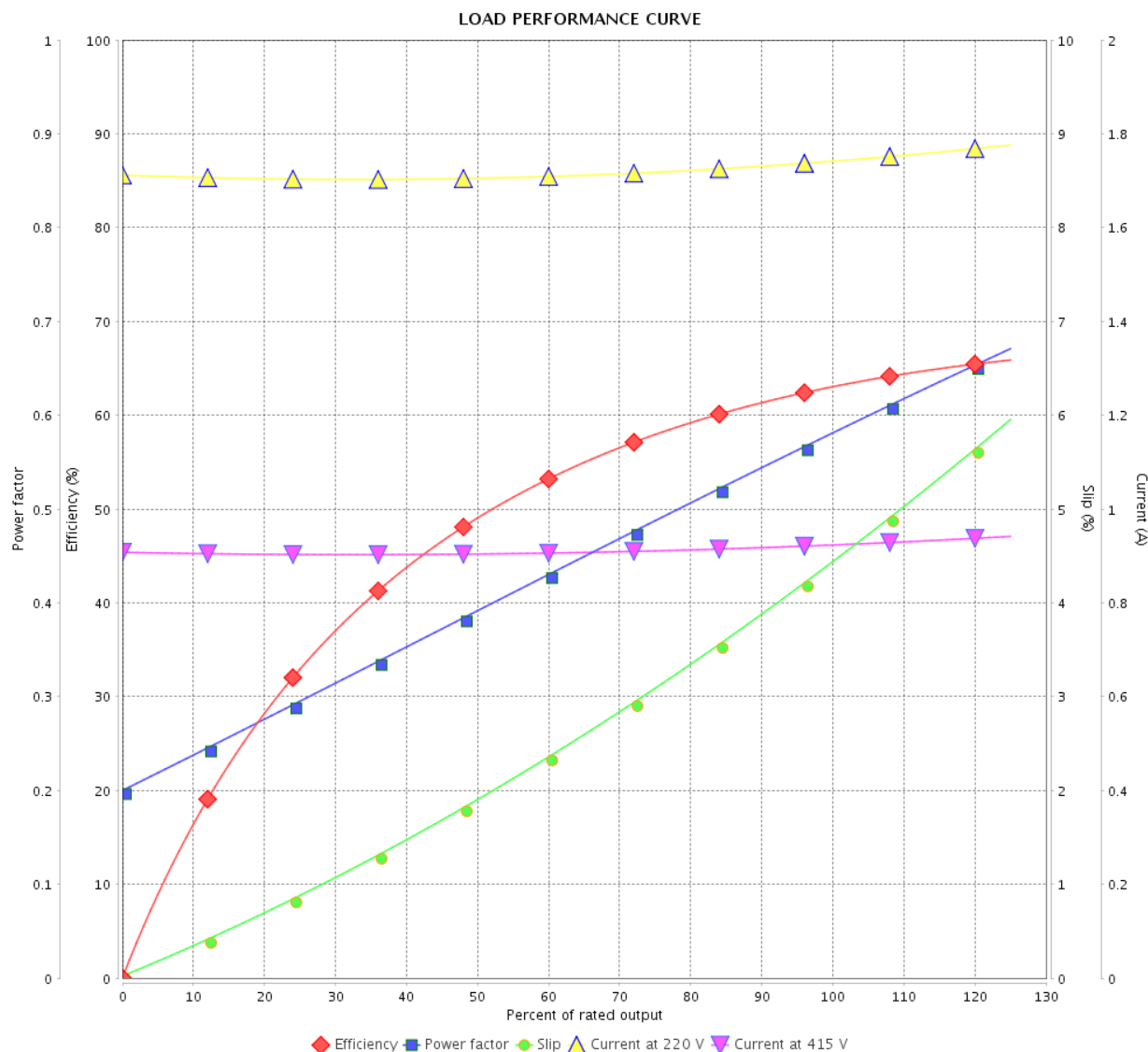
LOAD PERFORMANCE CURVE

Three Phase Induction Motor - Squirrel Cage



Customer :

Product line : Standard Efficiency Three-Phase Product code : 13760388

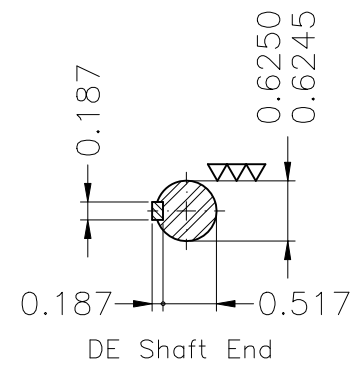
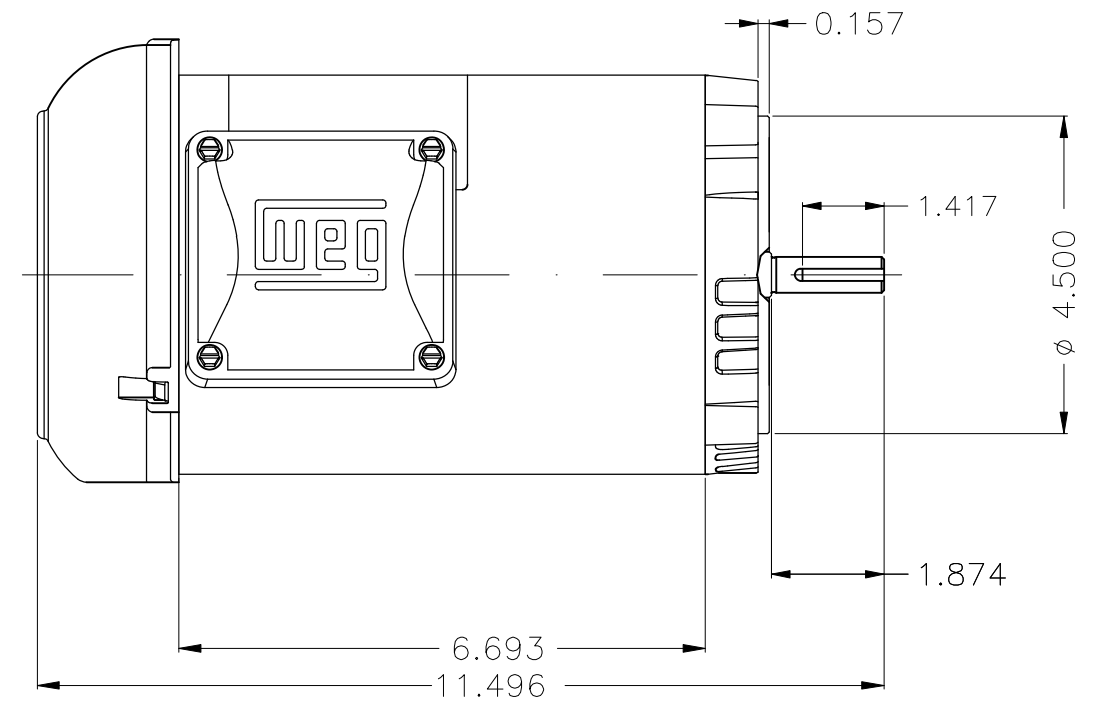
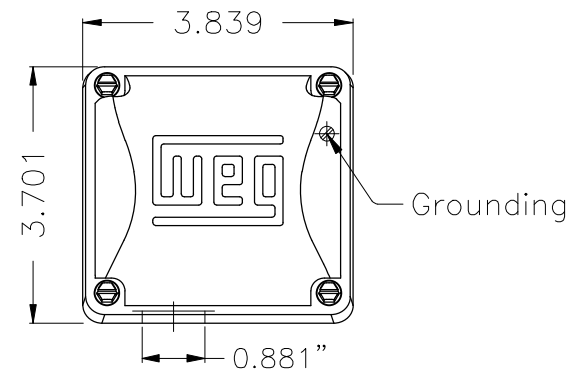




Performance : 220/415 V 50 Hz 6P

Rated current : 1.80/0.952 A
 LRC : 4.4
 Rated torque : 0.251 kgfm
 Locked rotor torque : 270 %
 Breakdown torque : 310 %
 Rated speed : 955 rpm

Moment of inertia (J) : 0.0024 kgm²
 Duty cycle : Cont.(S1)
 Insulation class : F
 Service factor : 1.15
 Temperature rise : 80 K

Rev.	Changes Summary	Performed	Checked	Date
Performed by		<div style="display: flex; justify-content: space-between;"> <div>Page 4 / 4</div> <div>Revision</div> </div>		
Checked by				
Date	13/05/2022			



Color Munsell N 1 matte black												
Painting plan 207N												
Mounting F-1/B14R(D)												
							HYBRISUSER				00	
ECM		LOC		SUMMARY OF MODIFICATIONS				EXECUTED	CHECKED	RELEASED	DATE VER	
EXECUTED		HYBRISUSER			THREE PH. MOTOR ROLLED STEEL FRAME W56C IP55 TEFC				PREVIEW WDD 00			
CHECKED												
RELEASED												
REL. DATE				WMO	Jaragua do Sul			Product Engineering		SHEET	1 / 1	