

DATA SHEET

Three Phase Induction Motor - Squirrel Cage



Customer :

Product line : Standard Efficiency Three-Phase Product code : 13885603

Frame	: W56C	Cooling method	: IC411 - TEFC
Insulation class	: F	Mounting	: F-1
Duty cycle	: Cont.(S1)	Rotation ¹	: Both (CW and CCW)
Ambient temperature	: -20°C to +40°C	Starting method	: Direct On Line
Altitude	: 1000 m.a.s.l.	Approx. weight ³	: 7.9 kg
Protection degree	: IP55	Moment of inertia (J)	: 0.0017 kgm ²

Output [HP]	0.5	0.5	0.5
Poles	4	4	4
Frequency [Hz]	60	50	50
Rated voltage [V]	208-230/460	190/380	220/415
Rated current [A]	1.98-1.79/0.896	2.04/1.02	1.98/1.05
L. R. Amperes [A]	11.9-10.8/5.38	9.59/4.79	10.1/5.35
LRC [A]	6.0x(Code K)	4.7x(Code H)	5.1x(Code J)
No load current [A]	1.20-1.40/0.698	1.36/0.682	1.57/0.830
Rated speed [RPM]	1730	1400	1420
Slip [%]	3.89	6.67	5.33
Rated torque [kgfm]	0.210	0.259	0.256
Locked rotor torque [%]	260	190	229
Breakdown torque [%]	280	200	250
Service factor		1.00	1.00
Temperature rise	80 K	80 K	80 K
Locked rotor time	28s (cold) 16s (hot)	32s (cold) 18s (hot)	27s (cold) 15s (hot)
Noise level ²	50.0 dB(A)	49.0 dB(A)	49.0 dB(A)
Efficiency (%)	25%		
	50%	62.0	59.0
	75%	70.0	66.0
	100%	72.0	67.0
Power Factor	25%		
	50%	0.49	0.50
	75%	0.62	0.63
	100%	0.72	0.73

	<u>Drive end</u>	<u>Non drive end</u>	Foundation loads
Bearing type	: 6203 ZZ	6202 ZZ	Max. traction : 16 kgf
Sealing	: V'Ring	V'Ring	Max. compression : 24 kgf
Lubrication interval	: -	-	
Lubricant amount	: -	-	
Lubricant type	: Mobil Polyrex EM		

Notes
USABLE @208V SF 1.00

This revision replaces and cancel the previous one, which must be eliminated.

- (1) Looking the motor from the shaft end.
- (2) Measured at 1m and with tolerance of +3dB(A).
- (3) Approximate weight subject to changes after manufacturing process.
- (4) At 100% of full load.

These are average values based on tests with sinusoidal power supply, subject to the tolerances stipulated in NEMA MG-1.

Rev.	Changes Summary	Performed	Checked	Date
Performed by				
Checked by				
Date	13/05/2022			
		Page 1 / 4		Revision

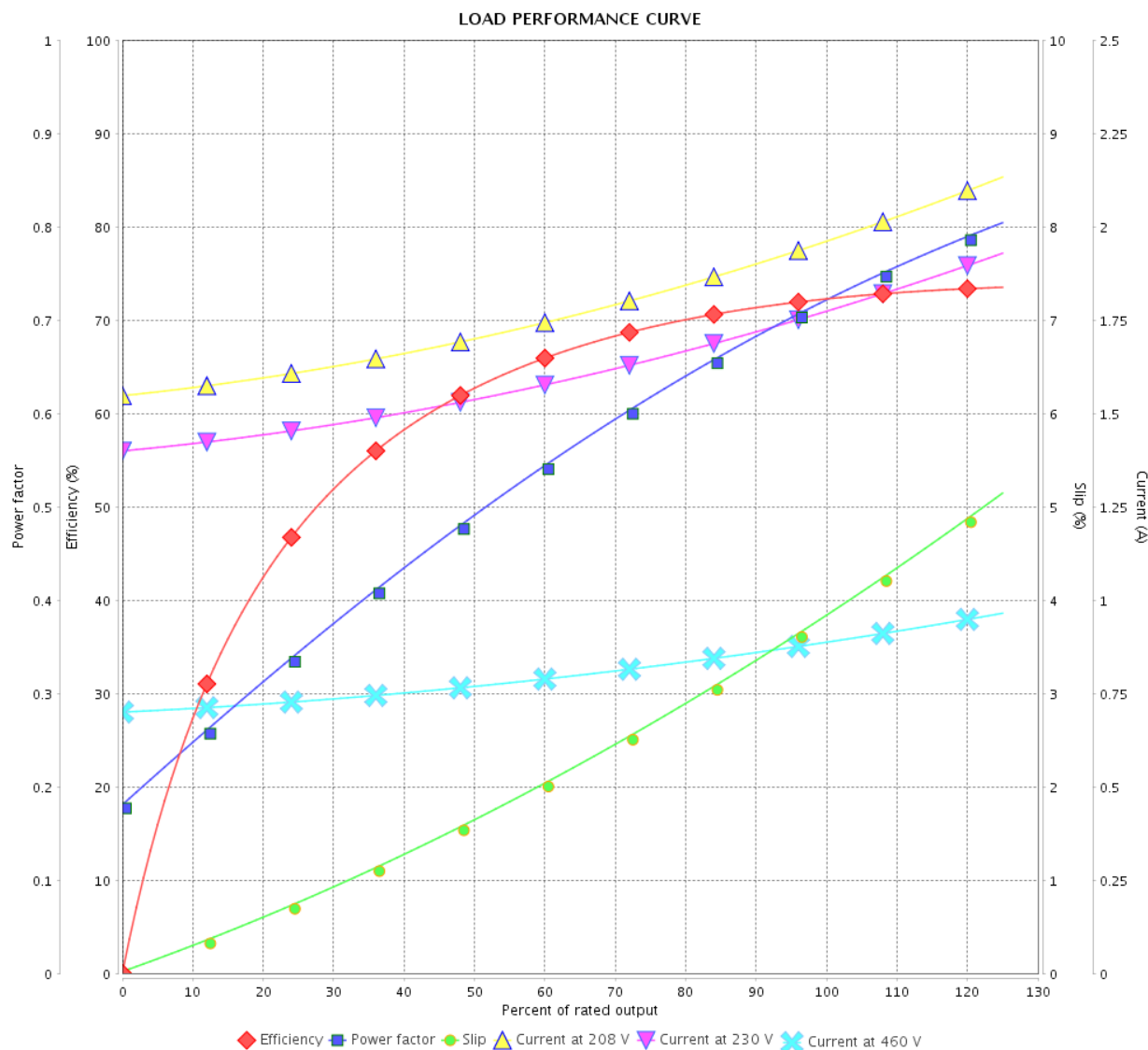
LOAD PERFORMANCE CURVE

Three Phase Induction Motor - Squirrel Cage



Customer :

Product line : Standard Efficiency Three-Phase Product code : 13885603



Performance : 208-230/460 V 60 Hz 4P

Rated current : 1.98-1.79/0.896 A
 LRC : 6.0
 Rated torque : 0.210 kgfm
 Locked rotor torque : 260 %
 Breakdown torque : 280 %
 Rated speed : 1730 rpm

Moment of inertia (J) : 0.0017 kgm²
 Duty cycle : Cont.(S1)
 Insulation class : F
 Service factor :
 Temperature rise : 80 K

Rev.	Changes Summary	Performed	Checked	Date
Performed by				Page 2 / 4
Checked by				
Date				
	13/05/2022			Revision

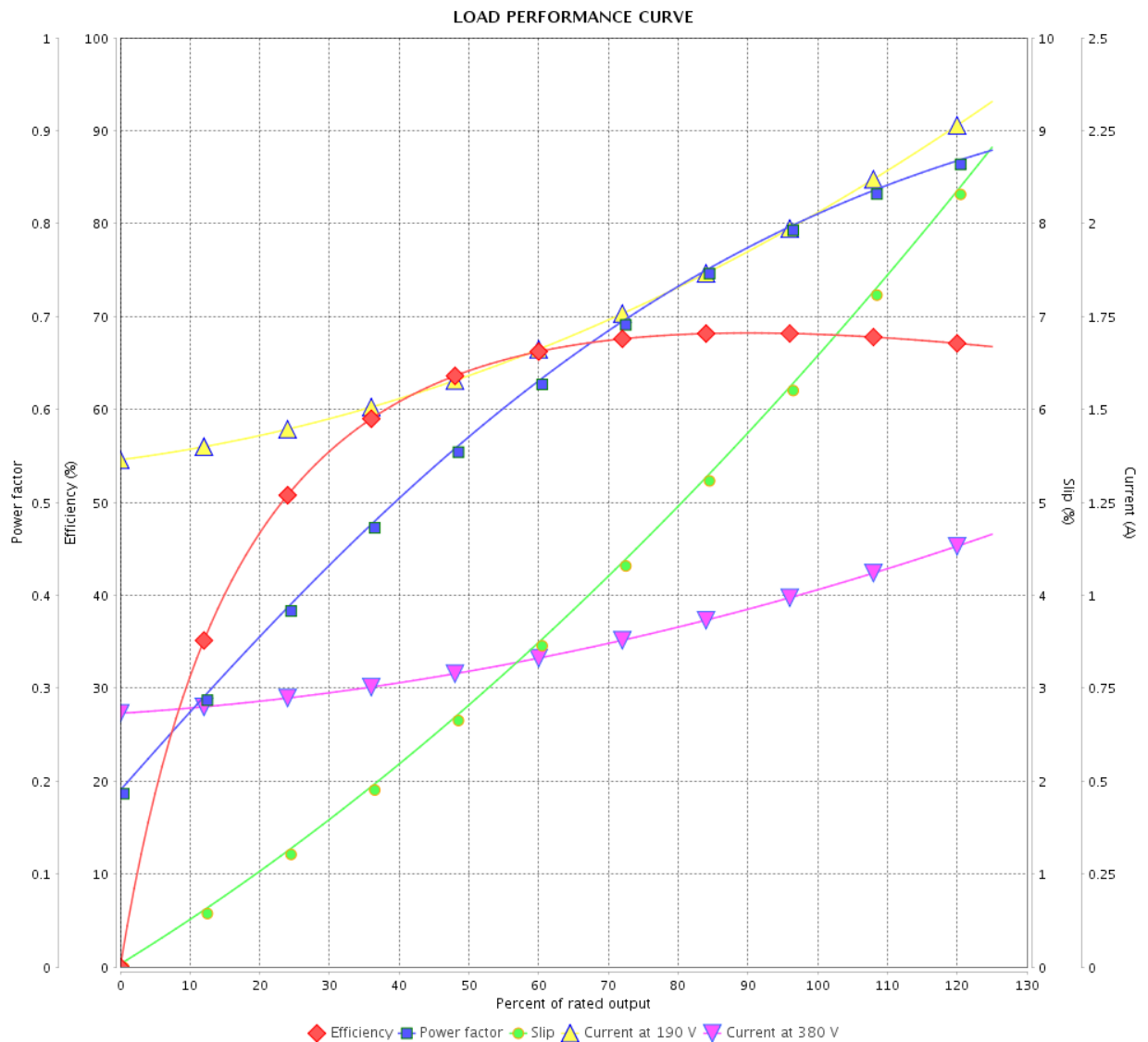
LOAD PERFORMANCE CURVE

Three Phase Induction Motor - Squirrel Cage



Customer :

Product line : Standard Efficiency Three-Phase Product code : 13885603



Performance : 190/380 V 50 Hz 4P

Rated current : 2.04/1.02 A
 LRC : 4.7
 Rated torque : 0.259 kgfm
 Locked rotor torque : 190 %
 Breakdown torque : 200 %
 Rated speed : 1400 rpm

Moment of inertia (J) : 0.0017 kgm²
 Duty cycle : Cont.(S1)
 Insulation class : F
 Service factor : 1.00
 Temperature rise : 80 K

Rev.	Changes Summary	Performed	Checked	Date
Performed by		Page 3 / 4Revision		
Checked by				
Date	13/05/2022			

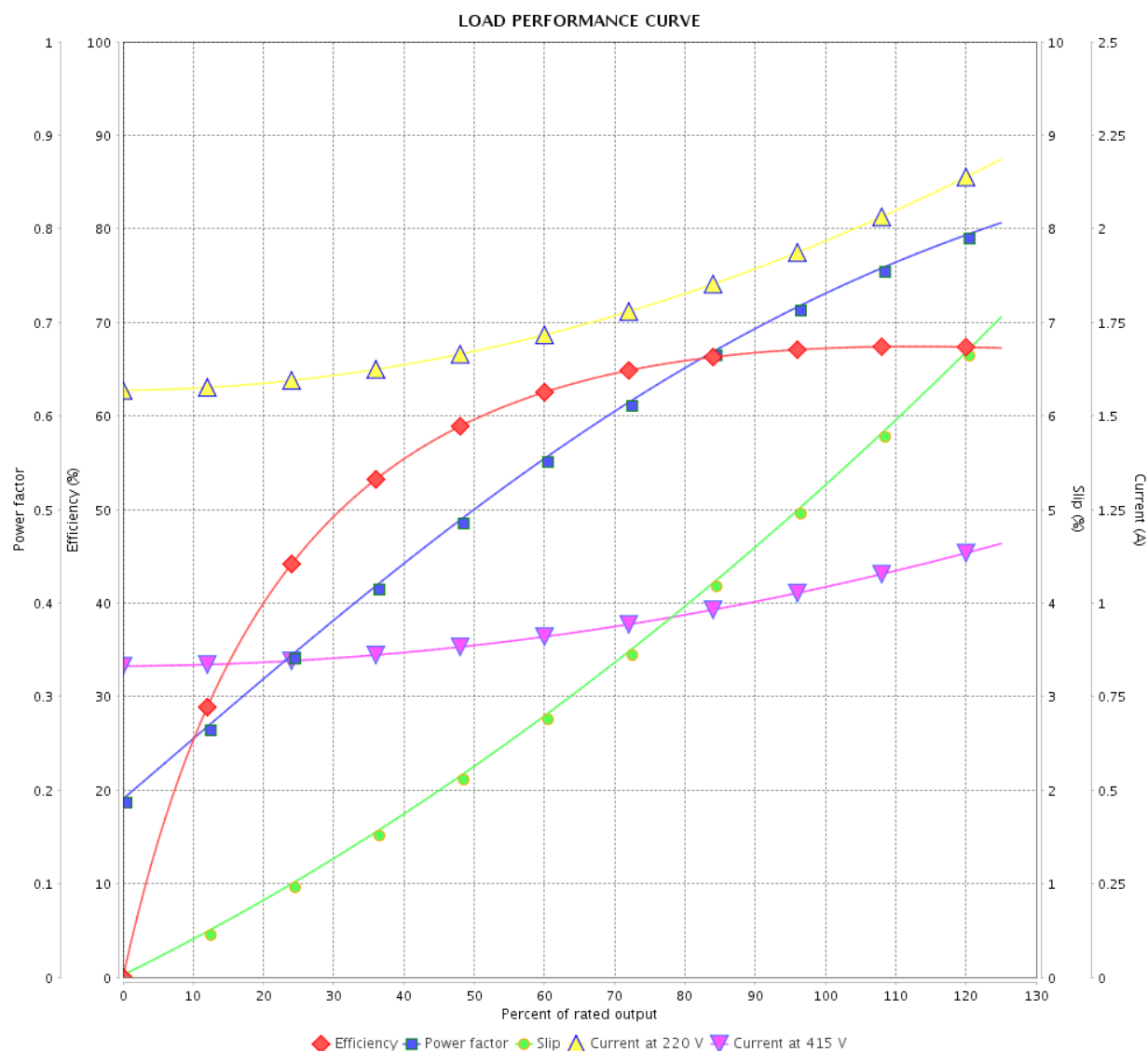
LOAD PERFORMANCE CURVE

Three Phase Induction Motor - Squirrel Cage



Customer :

Product line : Standard Efficiency Three-Phase Product code : 13885603

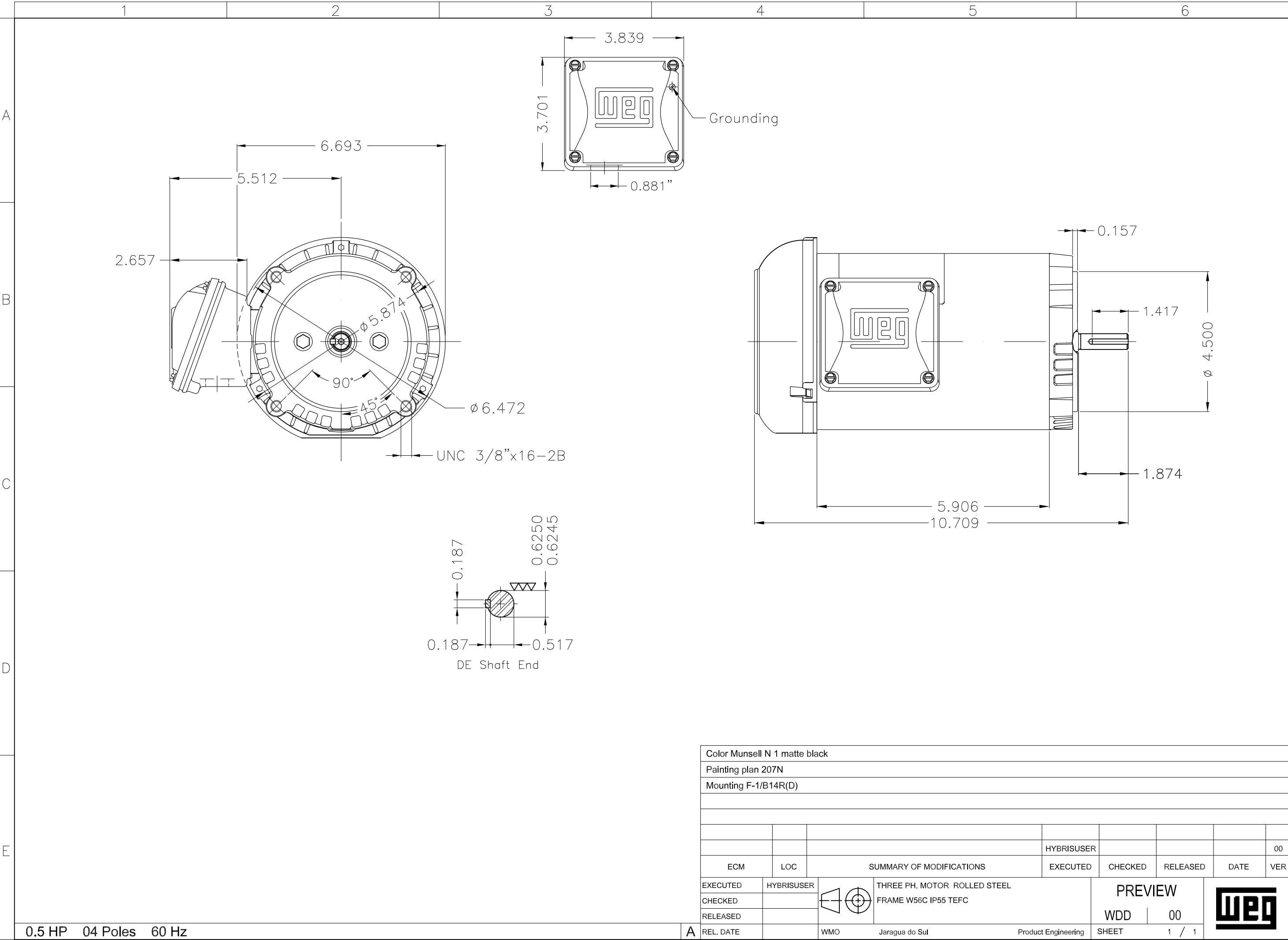


Performance : 220/415 V 50 Hz 4P

Rated current : 1.98/1.05 A
 LRC : 5.1
 Rated torque : 0.256 kgfm
 Locked rotor torque : 229 %
 Breakdown torque : 250 %
 Rated speed : 1420 rpm

Moment of inertia (J) : 0.0017 kgm²
 Duty cycle : Cont.(S1)
 Insulation class : F
 Service factor : 1.00
 Temperature rise : 80 K

Rev.	Changes Summary	Performed	Checked	Date
Performed by		Page 4 / 4Revision		
Checked by				
Date	13/05/2022			



Color Munsell N 1 matte black									
Painting plan 207N									
Mounting F-1/B14R(D)									