

DATA SHEET



Three Phase Induction Motor - Squirrel Cage

Customer :						
Product line		: W22 NEMA Premium Efficiency Three-Phase		Product code :		17753755
Frame	:	182/4TD		Locked rotor time	:	46s (cold) 26s (hot)
Output	:	3 HP (2.2 kW)		Temperature rise	:	80 K
Poles	:	2		Duty cycle	:	Cont.(S1)
Frequency	:	60 Hz		Ambient temperature	:	-20°C to +40°C
Rated voltage	:	575 V		Altitude	:	1000 m.a.s.l.
Rated current	:	3.01 A		Protection degree	:	IP55
L. R. Amperes	:	25.9 A		Cooling method	:	IC411 - TEFC
LRC	:	8.6x(Code K)		Mounting	:	F-1
No load current	:	1.28 A		Rotation ¹	:	Both (CW and CCW)
Rated speed	:	3515 rpm		Noise level ²	:	66.0 dB(A)
Slip	:	2.36 %		Starting method	:	Direct On Line
Rated torque	:	0.619 kgfm		Approx. weight ³	:	38.4 kg
Locked rotor torque	:	250 %				
Breakdown torque	:	380 %				
Insulation class	:	F				
Service factor	:	1.25				
Moment of inertia (J)	:	0.0080 kgm ²				
Design	:	B				
Output	50%	75%	100%	Foundation loads		
Efficiency (%)	82.0	86.0	86.5	Max. traction	:	30 kgf
Power Factor	0.70	0.80	0.85	Max. compression	:	68 kgf
Losses at normative operating points (speed;torque), in percentage of rated output power						
P1 (0,9;1,0)	P2 (0,5;1,0)	P3 (0,25;1,0)	P4 (0,9;0,5)	P5 (0,5;0,5)	P6 (0,5;0,25)	P7 (0,25;0,25)
14.6	10.7	9.4	8.3	4.5	3.1	1.8
		<u>Drive end</u>		<u>Non drive end</u>		
Bearing type	:	6207 ZZ		6206 ZZ		
Sealing	:	V'Ring		V'Ring		
Lubrication interval	:	-		-		
Lubricant amount	:	-		-		
Lubricant type	:	Mobil Polyrex EM				
Notes						
This revision replaces and cancel the previous one, which must be eliminated. (1) Looking the motor from the shaft end. (2) Measured at 1m and with tolerance of +3dB(A). (3) Approximate weight subject to changes after manufacturing process. (4) At 100% of full load.				These are average values based on tests with sinusoidal power supply, subject to the tolerances stipulated in NEMA MG-1.		
Rev.	Changes Summary			Performed	Checked	Date
Performed by						
Checked by					Page	Revision
Date	02/09/2024				1 / 2	

LOAD PERFORMANCE CURVE

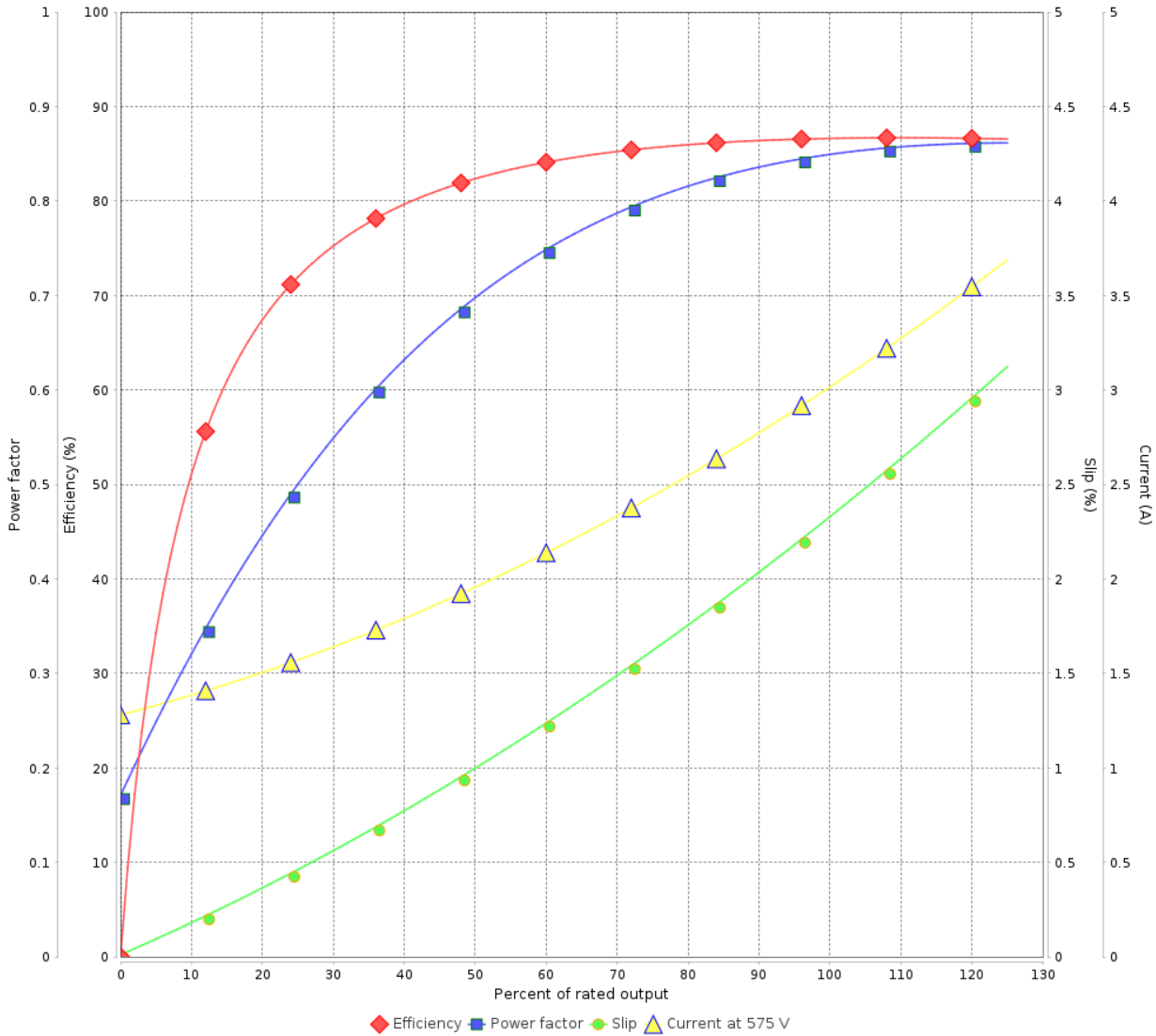
Three Phase Induction Motor - Squirrel Cage



Customer :

Product line : W22 NEMA Premium Efficiency Three-Phase Product code : 17753755

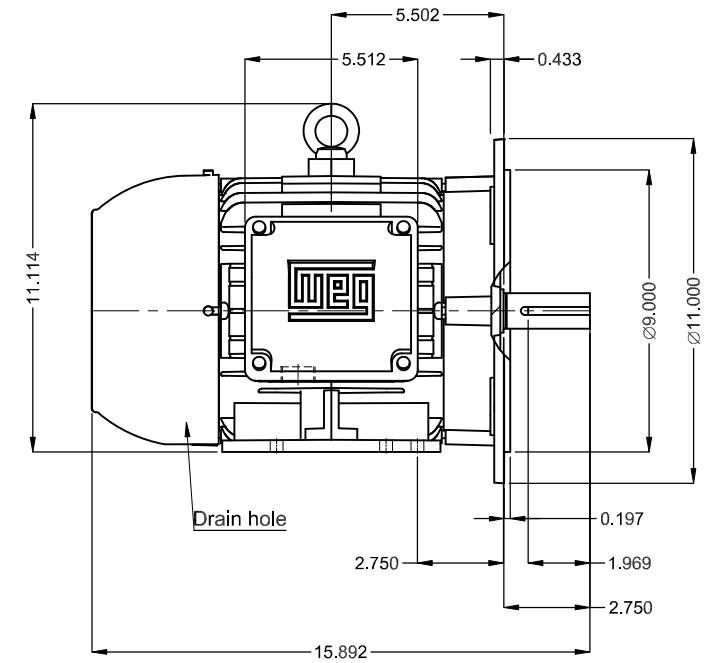
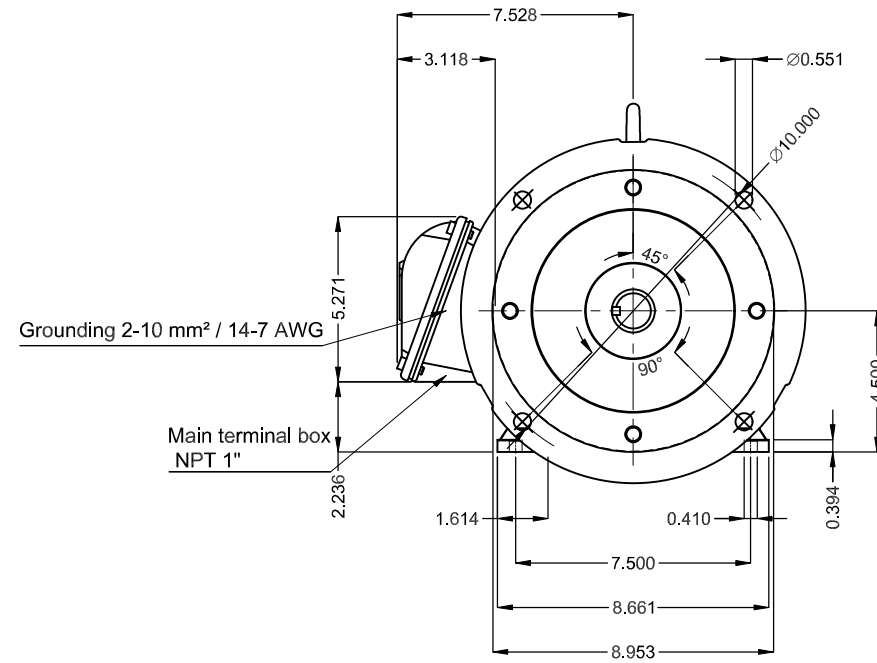
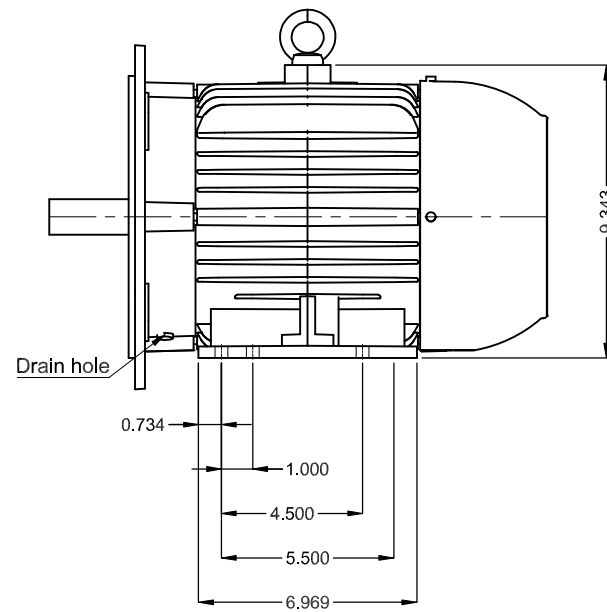
LOAD PERFORMANCE CURVE



Performance : 575 V 60 Hz 2P

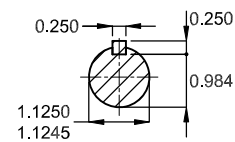
Rated current	: 3.01 A	Moment of inertia (J)	: 0.0080 kgm ²
LRC	: 8.6	Duty cycle	: Cont.(S1)
Rated torque	: 0.619 kgfm	Insulation class	: F
Locked rotor torque	: 250 %	Service factor	: 1.25
Breakdown torque	: 380 %	Temperature rise	: 80 K
Rated speed	: 3515 rpm	Design	: B

Rev.	Changes Summary	Performed	Checked	Date
Performed by			Page 2 / 2	Revision
Checked by				
Date	02/09/2024			



Color RAL 5009
 Painting plan 207A
 Mounting NEMA F-1
 Mounting B35R(D)

DE Shaft End



3 HP 02 Poles 60 Hz

A

Scale 1 : 6

HYBRISUSER

00

ECM LOC

SUMMARY OF MODIFICATIONS

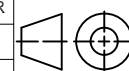
EXECUTED

CHECKED

RELEASED

DATE VER

EXECUTED HYBRISUSER



THREE PH. MOTOR W22 NEMA PREM. EFF.

FRAME 182/4TD IP55 TEFC

PREVIEW

WDD 00

SHEET /

