

DATA SHEET

Three Phase Induction Motor - Squirrel Cage



Customer :

Product line : ODP NEMA Premium Efficiency Three-Phase Product code : 13688045

Frame	: 284T	Locked rotor time	: 27s (cold) 15s (hot)
Output	: 25 HP (18.5 kW)	Temperature rise	: 80 K
Poles	: 4	Duty cycle	: Cont.(S1)
Frequency	: 60 Hz	Ambient temperature	: -20°C to +40°C
Rated voltage	: 575 V	Altitude	: 1000 m.a.s.l.
Rated current	: 23.9 A	Protection degree	: IP23
L. R. Amperes	: 160 A	Cooling method	: IC01 - ODP
LRC	: 6.7x(Code H)	Mounting	: F-1
No load current	: 9.60 A	Rotation ¹	: Both (CW and CCW)
Rated speed	: 1770 rpm	Noise level ²	: 62.0 dB(A)
Slip	: 1.67 %	Starting method	: Direct On Line
Rated torque	: 10.3 kgfm	Approx. weight ³	: 162 kg
Locked rotor torque	: 250 %		
Breakdown torque	: 280 %		
Insulation class	: F		
Service factor	: 1.15		
Moment of inertia (J)	: 0.1435 kgm ²		
Design	: B		

Output	50%	75%	100%	Foundation loads	
Efficiency (%)	92.4	93.0	93.6	Max. traction	: 329 kgf
Power Factor	0.67	0.78	0.83	Max. compression	: 492 kgf

	Drive end	Non drive end
Bearing type	: 6311 Z C3	: 6211 Z C3
Sealing	: Without Bearing Seal	: Without Bearing Seal
Lubrication interval	: 20000 h	: 20000 h
Lubricant amount	: 18 g	: 11 g
Lubricant type	: Mobil Polyrex EM	

Notes

This revision replaces and cancel the previous one, which must be eliminated.

- (1) Looking the motor from the shaft end.
- (2) Measured at 1m and with tolerance of +3dB(A).
- (3) Approximate weight subject to changes after manufacturing process.
- (4) At 100% of full load.

These are average values based on tests with sinusoidal power supply, subject to the tolerances stipulated in NEMA MG-1.

Rev.	Changes Summary	Performed	Checked	Date
Performed by		Page 1 / 2 Revision		
Checked by				
Date	19/10/2024			

LOAD PERFORMANCE CURVE

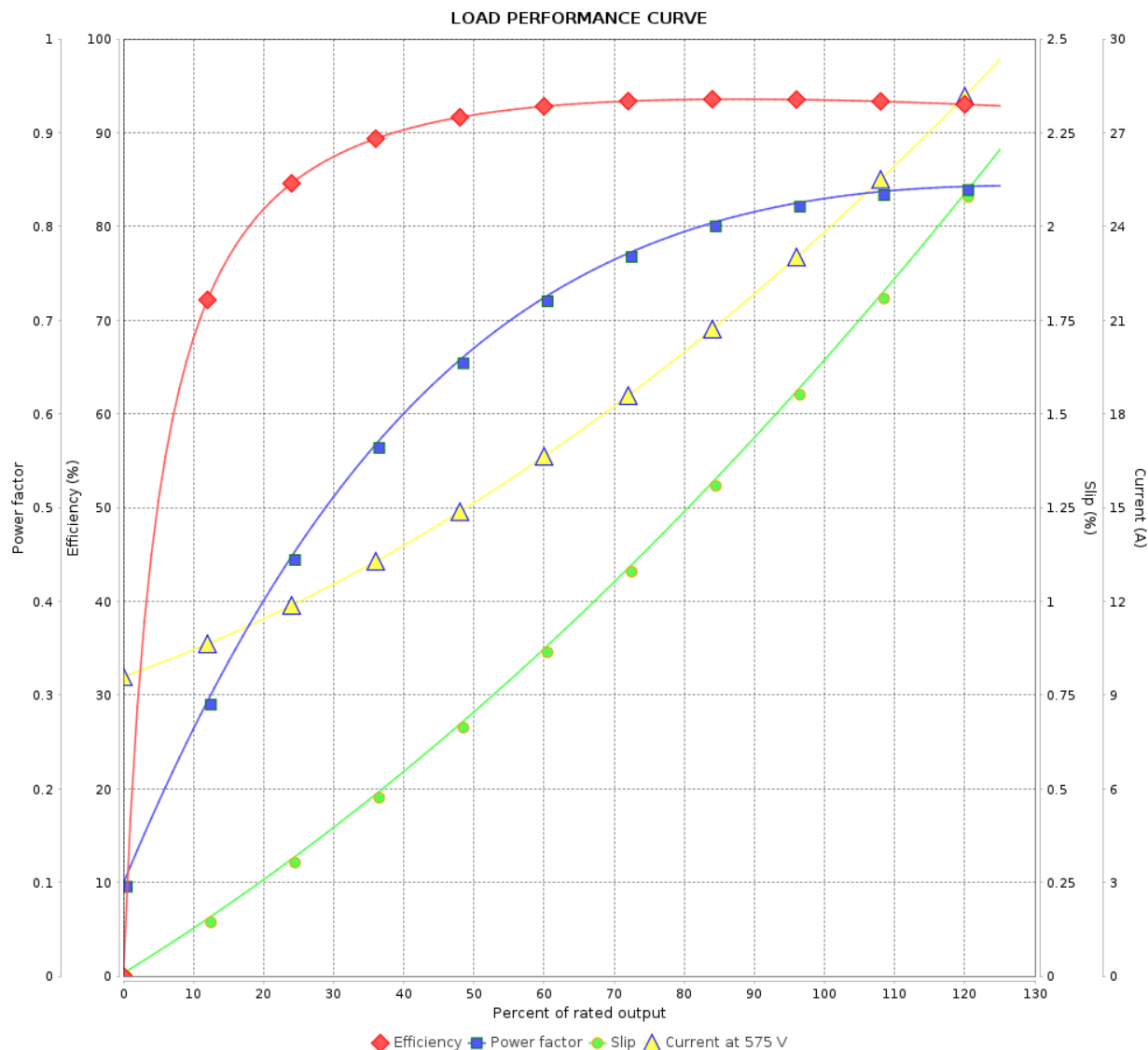
Three Phase Induction Motor - Squirrel Cage



Customer :

Product line : ODP NEMA Premium Efficiency
Three-Phase

Product code : 13688045

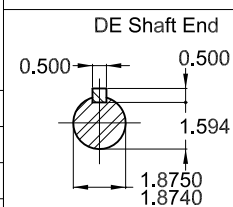
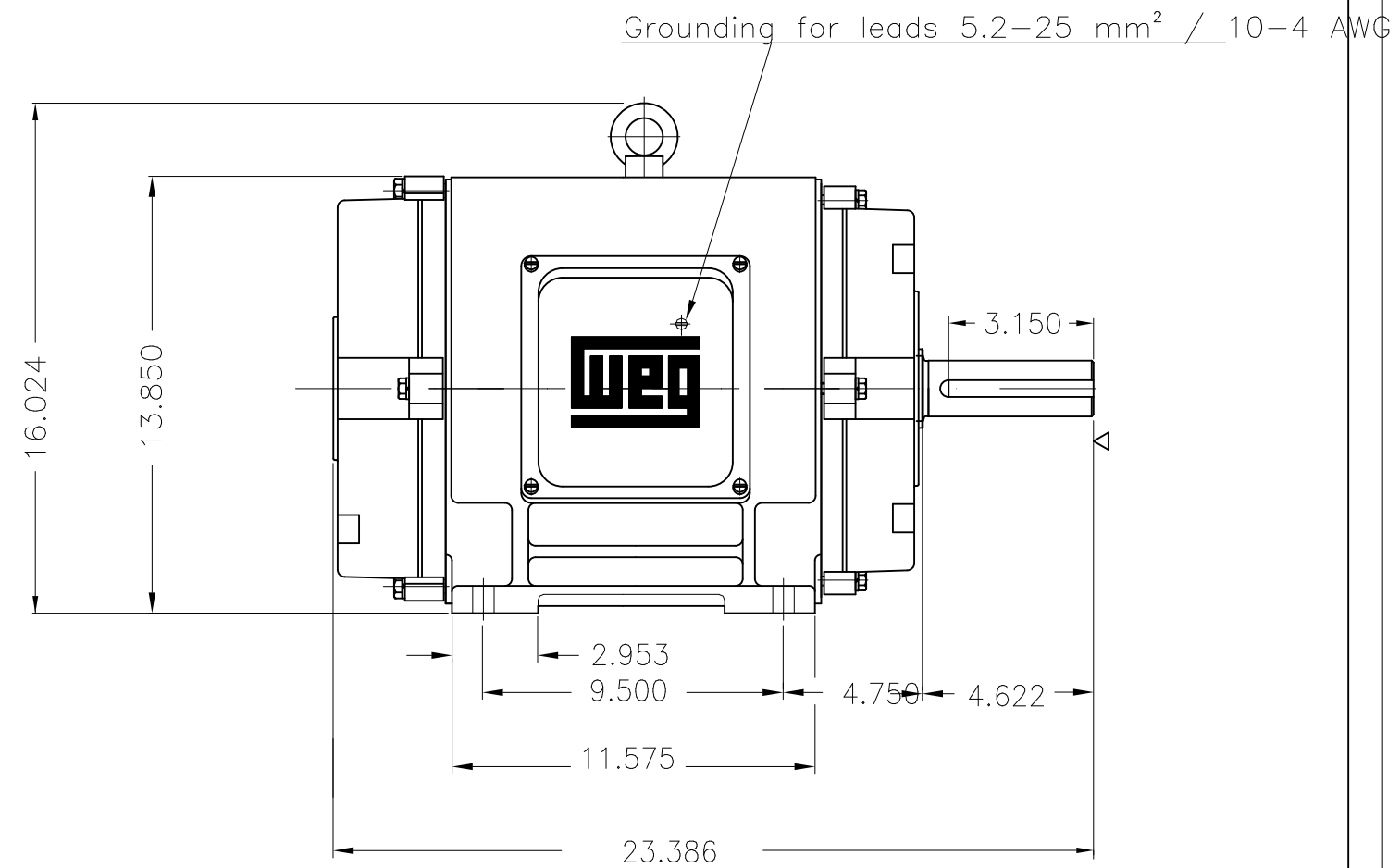
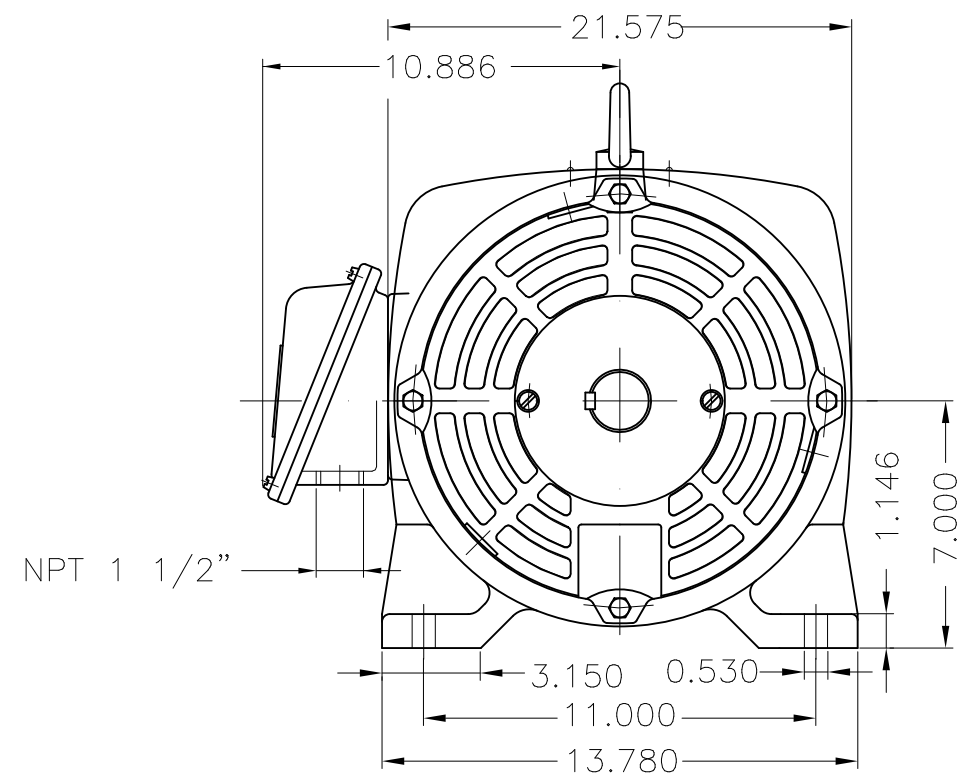


Performance : 575 V 60 Hz 4P



Rated current : 23.9 A
LRC : 6.7
Rated torque : 10.3 kgfm
Locked rotor torque : 250 %
Breakdown torque : 280 %
Rated speed : 1770 rpm

Moment of inertia (J) : 0.1435 kgm²
Duty cycle : Cont.(S1)
Insulation class : F
Service factor : 1.15
Temperature rise : 80 K
Design : B

Rev.	Changes Summary		Performed	Checked	Date
Performed by				Page	Revision
Checked by				2 / 2	
Date					



Color RAL 5009
Painting plan 203A
Mounting NEMA F-1
Mounting B3R(D)

25 HP 04 Poles 60 Hz										A	
							HYBRISUSER			00	
ECM	LOC	SUMMARY OF MODIFICATIONS					EXECUTED	CHECKED	RELEASED	DATE	VER
EXECUTED	HYBRISUSER		THREE PH. MOTOR GENERAL NEMA PREM. EFF. FRAME 284T IP23 ODP					PREVIEW WDD 00			
CHECKED											
RELEASED											
REL. DATE		WMO	Jaragua do Sul	Product Engineering	SHEET		1 / 1				