

DATA SHEET

Three Phase Induction Motor - Squirrel Cage



Customer :

Product line : General High Efficiency Three-Phase Product code : 11996047

Frame : 184TC	Cooling method : IC01 - ODP
Insulation class : F	Mounting : F-1
Duty cycle : Cont.(S1)	Rotation ¹ : Both (CW and CCW)
Ambient temperature : -20°C to +40°C	Starting method : Direct On Line
Altitude : 1000 m.a.s.l.	Approx. weight ³ : 31.6 kg
Protection degree : IP21	Moment of inertia (J) : 0.0069 kgm ²
Design : B	

Output [HP]	7.5	7.5	7.5	7.5
Poles	2	2	2	2
Frequency [Hz]	60	50	50	50
Rated voltage [V]	230/460	380	400	415
Rated current [A]	17.9/8.97	11.1	10.6	10.3
L. R. Amperes [A]	126/62.8	59.9	63.6	65.9
LRC [A]	7.0x(Code H)	5.4x(Code F)	6.0x(Code G)	6.4x(Code H)
No load current [A]	6.20/3.10	3.00	3.50	4.00
Rated speed [RPM]	3485	2835	2855	2870
Slip [%]	3.19	5.50	4.83	4.33
Rated torque [kgfm]	1.56	1.92	1.91	1.90
Locked rotor torque [%]	220	150	180	190
Breakdown torque [%]	300	210	229	250
Service factor	1.15	1.00	1.00	1.00
Temperature rise	105 K	105 K	105 K	105 K
Locked rotor time	23s (cold) 13s (hot)	21s (cold) 12s (hot)	18s (cold) 10s (hot)	14s (cold) 8s (hot)
Noise level ²	65.0 dB(A)			
Efficiency (%)	25%			
	50%	86.5	85.5	85.5
	75%	87.5	85.5	86.5
	100%	87.5	84.0	85.5
Power Factor	25%			
	50%	0.75	0.78	0.70
	75%	0.84	0.87	0.82
	100%	0.88	0.90	0.87

	<u>Drive end</u>	<u>Non drive end</u>	Foundation loads
Bearing type :	6206 ZZ	6205 ZZ	Max. traction : 83 kgf
Sealing :	Without	Without	Max. compression : 115 kgf
	Bearing Seal	Bearing Seal	
Lubrication interval :	-	-	
Lubricant amount :	-	-	
Lubricant type :	Mobil Polyrex EM		

Notes
USABLE @208V 19.8A SF 1.15 SFA 22.8A

This revision replaces and cancel the previous one, which must be eliminated.

- (1) Looking the motor from the shaft end.
- (2) Measured at 1m and with tolerance of +3dB(A).
- (3) Approximate weight subject to changes after manufacturing process.
- (4) At 100% of full load.

These are average values based on tests with sinusoidal power supply, subject to the tolerances stipulated in NEMA MG-1.

Rev.	Changes Summary	Performed	Checked	Date
Performed by				
Checked by				
Date	24/08/2025			

Page 1 / 5
Revision

LOAD PERFORMANCE CURVE

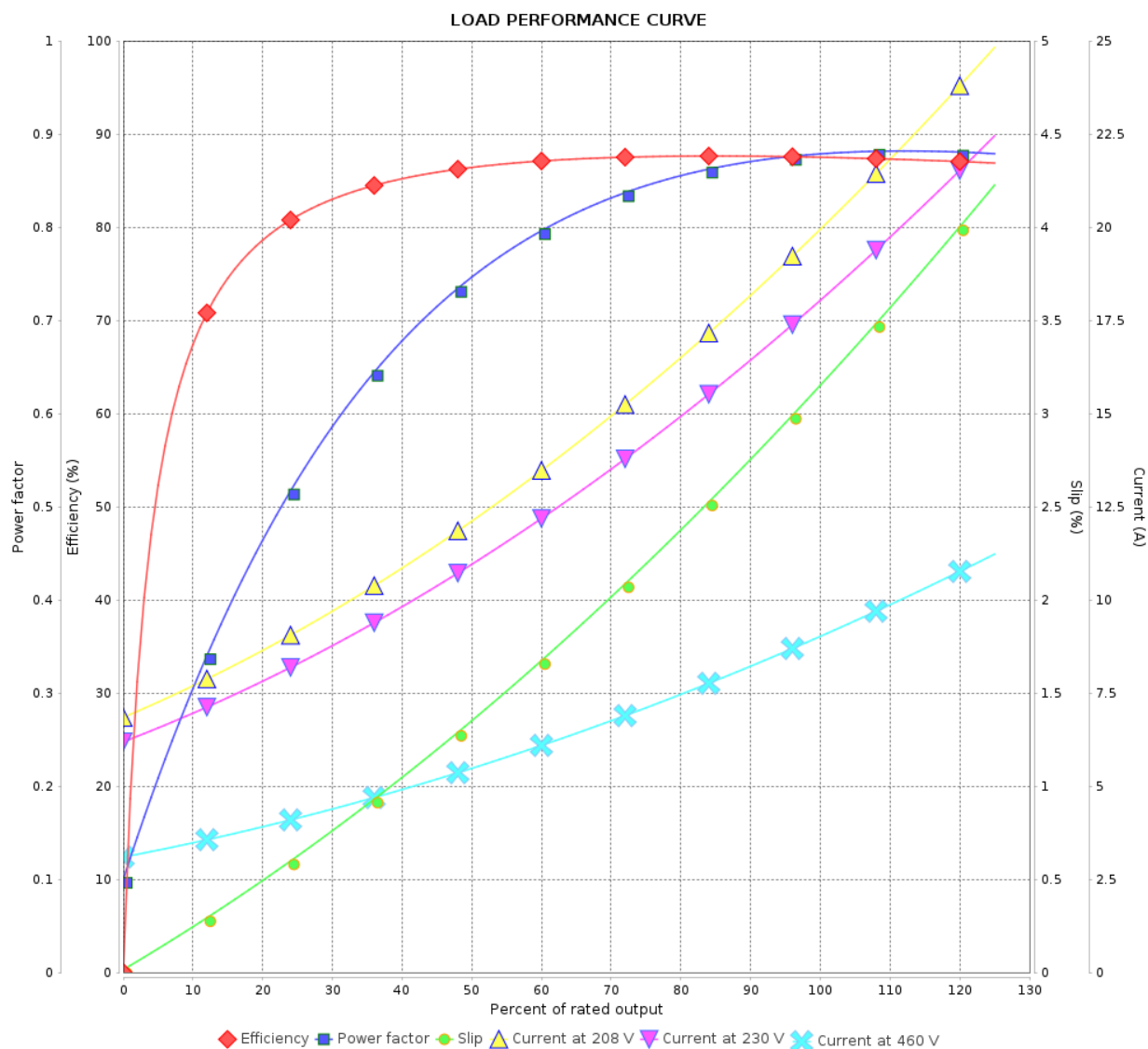
Three Phase Induction Motor - Squirrel Cage



Customer :

Product line : General High Efficiency Three-Phase

Product code : 11996047



Performance : 230/460 V 60 Hz 2P

Rated current : 17.9/8.97 A
LRC : 7.0
Rated torque : 1.56 kgfm
Locked rotor torque : 220 %
Breakdown torque : 300 %
Rated speed : 3485 rpm

Moment of inertia (J) : 0.0069 kgm²
Duty cycle : Cont.(S1)
Insulation class : F
Service factor : 1.15
Temperature rise : 105 K
Design : B

Rev.	Changes Summary		Performed	Checked	Date
Performed by				Page 2 / 5	Revision
Checked by					
Date	24/08/2025				

LOAD PERFORMANCE CURVE

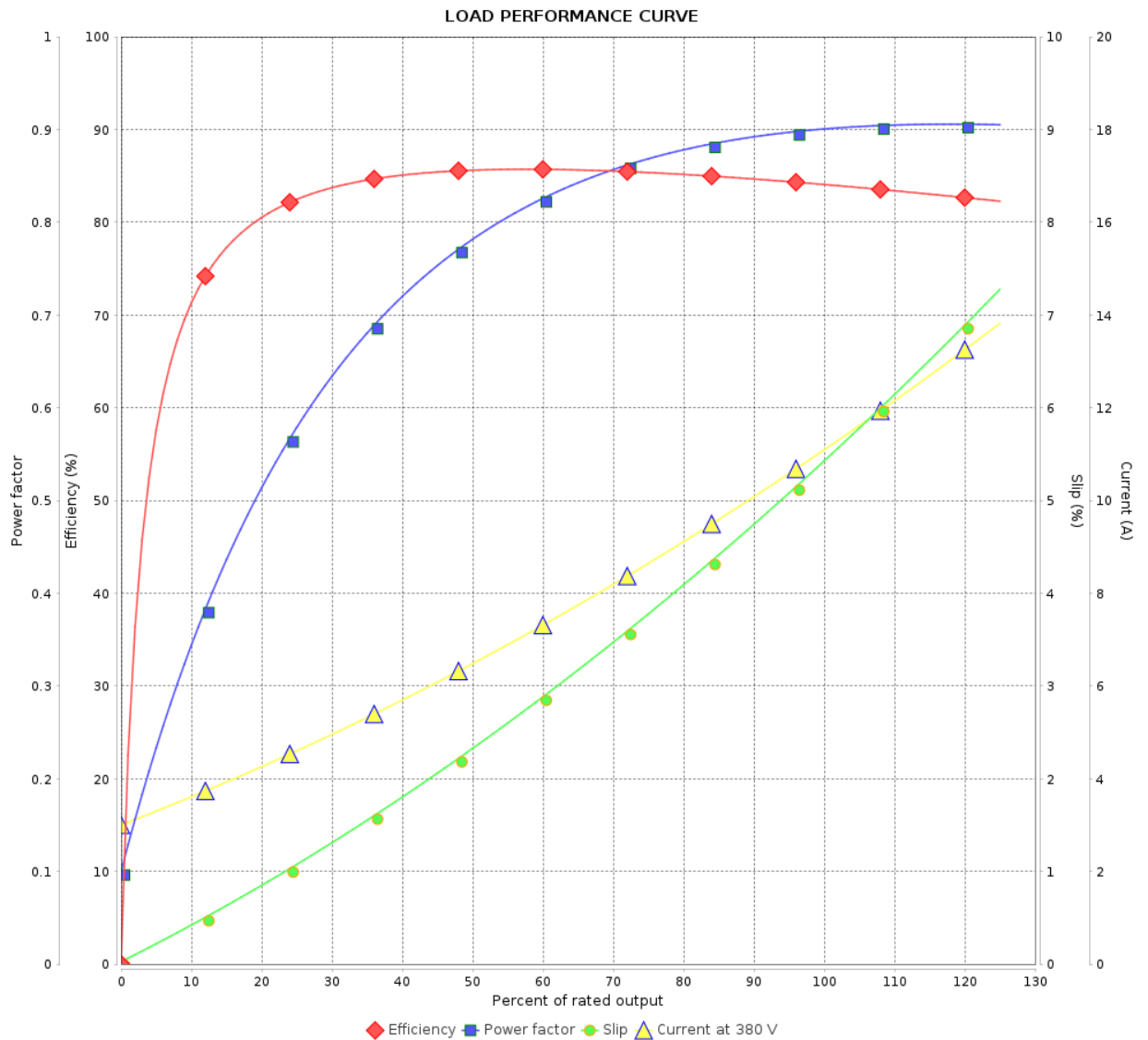
Three Phase Induction Motor - Squirrel Cage



Customer :

Product line : General High Efficiency Three-Phase

Product code : 11996047



Performance : 380 V 50 Hz 2P

Rated current	: 11.1 A	Moment of inertia (J)	: 0.0069 kgm ²
LRC	: 5.4	Duty cycle	: Cont.(S1)
Rated torque	: 1.92 kgfm	Insulation class	: F
Locked rotor torque	: 150 %	Service factor	: 1.00
Breakdown torque	: 210 %	Temperature rise	: 105 K
Rated speed	: 2835 rpm	Design	: B

Rev.	Changes Summary	Performed	Checked	Date
Performed by		Page 3 / 5 Revision		
Checked by				
Date	24/08/2025			

LOAD PERFORMANCE CURVE

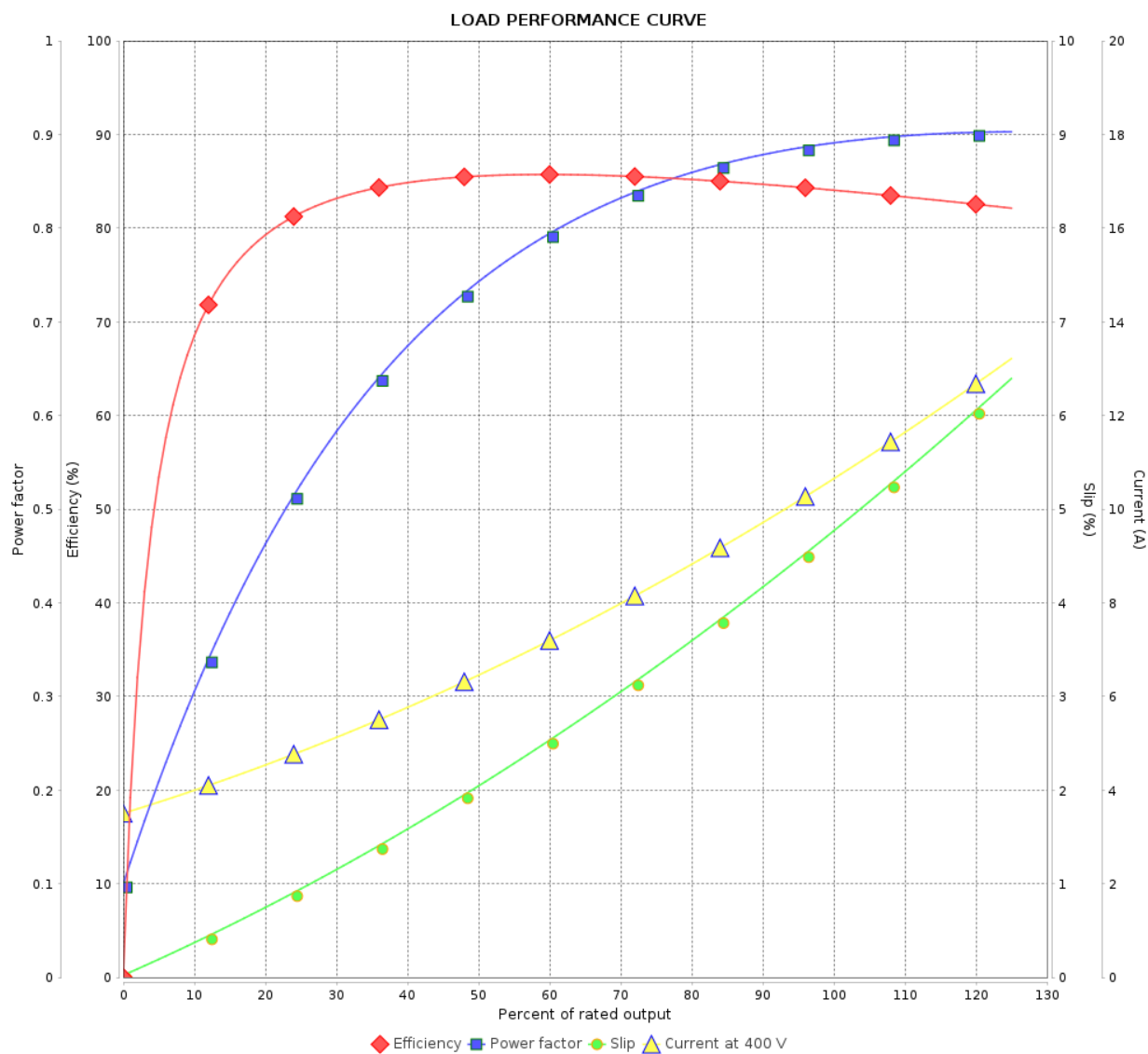
Three Phase Induction Motor - Squirrel Cage



Customer :

Product line : General High Efficiency Three-Phase

Product code : 11996047



Performance : 400 V 50 Hz 2P

Rated current : 10.6 A
LRC : 6.0
Rated torque : 1.91 kgfm
Locked rotor torque : 180 %
Breakdown torque : 229 %
Rated speed : 2855 rpm

Moment of inertia (J) : 0.0069 kgm²
Duty cycle : Cont.(S1)
Insulation class : F
Service factor : 1.00
Temperature rise : 105 K
Design : B

Rev.	Changes Summary		Performed	Checked	Date
Performed by				Page	Revision
Checked by				4 / 5	
Date					
	24/08/2025				

LOAD PERFORMANCE CURVE

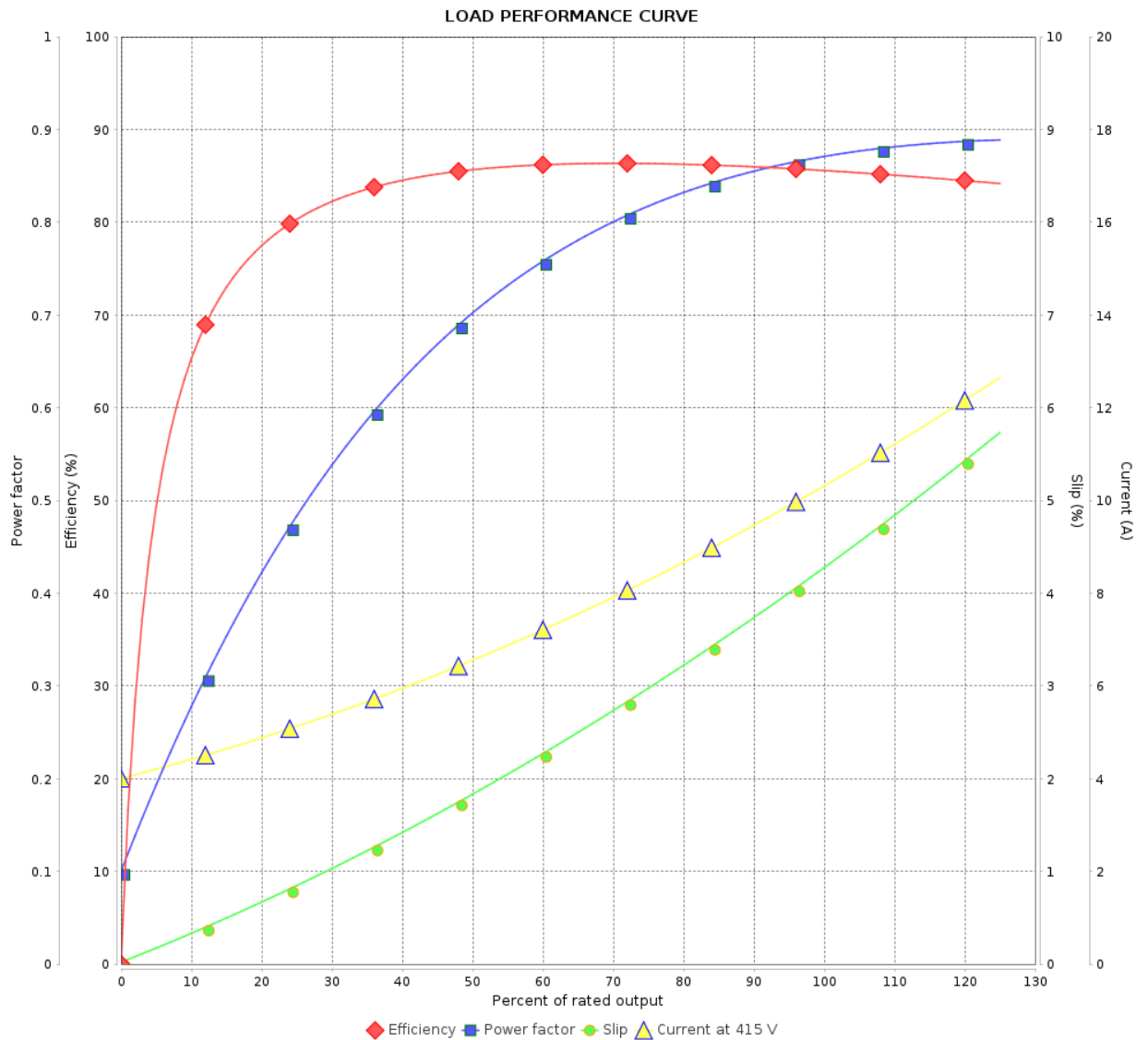
Three Phase Induction Motor - Squirrel Cage



Customer :

Product line : General High Efficiency Three-Phase

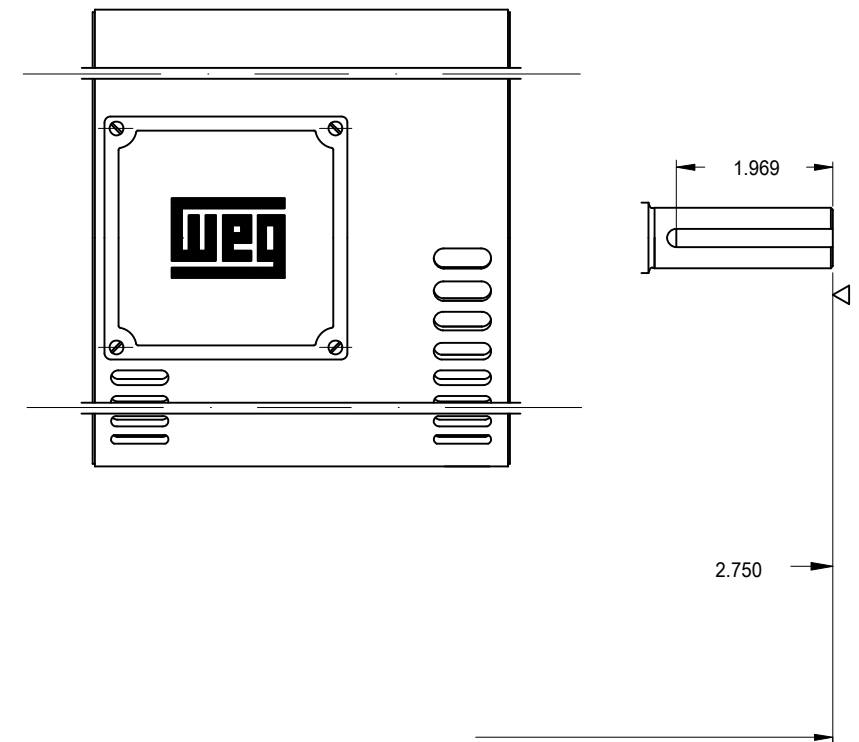
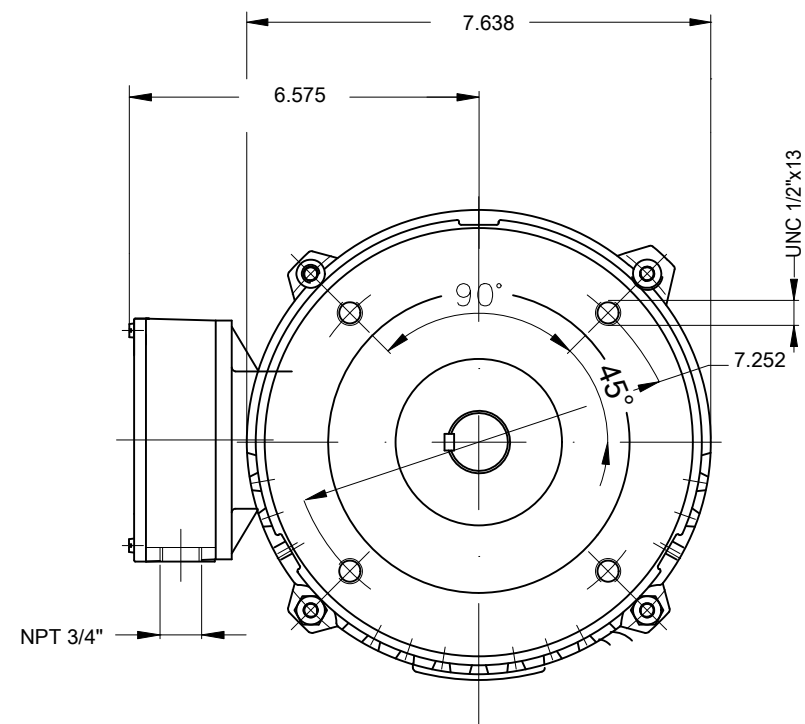
Product code : 11996047



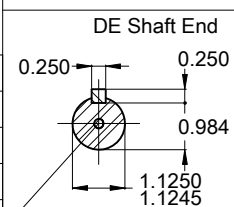
Performance : 415 V 50 Hz 2P IE1



Rated current	: 10.3 A	Moment of inertia (J)	: 0.0069 kgm ²
LRC	: 6.4	Duty cycle	: Cont.(S1)
Rated torque	: 1.90 kgfm	Insulation class	: F
Locked rotor torque	: 190 %	Service factor	: 1.00
Breakdown torque	: 250 %	Temperature rise	: 105 K
Rated speed	: 2870 rpm	Design	: B

Rev.	Changes Summary	Performed	Checked	Date
Performed by		Page 5 / 5Revision		
Checked by				
Date	24/08/2025			



Plastic flat plug
Packing - crate
Color RAL 5009
Painting plan 207A
Mounting B14R(D)



7.5 HP 02 Poles 60 Hz										A
							HYBRISUSER			00
ECM	LOC	SUMMARY OF MODIFICATIONS				EXECUTED	CHECKED	RELEASED	DATE	VER
EXECUTED	HYBRISUSER		THREE PH. MOTOR GENERAL HIGH EFF. FRAME 184TC IP21 ODP				<div> <div>PREVIEW</div> <div>WDD 00</div> </div>			
CHECKED										
RELEASED										
REL. DATE		WMO	Jaragua do Sul			Product Engineering	SHEET	1 / 1		