

DATA SHEET



Three Phase Induction Motor - Squirrel Cage

Customer :				
Product line	: NEMA Premium Efficiency Three-Phase	Product code :	12630271	
Frame	: 182/4T	Cooling method	: IC01 - ODP	
Insulation class	: F	Mounting	: F-1	
Duty cycle	: Cont.(S1)	Rotation ¹	: Both (CW and CCW)	
Ambient temperature	: -20°C to +40°C	Starting method	: Direct On Line	
Altitude	: 1000 m.a.s.l.	Approx. weight ³	: 36.8 kg	
Design	: B	Moment of inertia (J)	: 0.0169 kgm ²	
Output [HP]	5	5	5	
Poles	4	4	4	
Frequency [Hz]	60	50	50	
Rated voltage [V]	230/460	190/380	220/415	
Rated current [A]	12.7/6.33	15.4/7.71	13.8/7.32	
L. R. Amperes [A]	91.2/45.6	89.4/44.7	89.8/47.6	
LRC [A]	7.2x(Code J)	5.8x(Code G)	6.5x(Code H)	
No load current [A]	6.29/3.15	6.19/3.10	6.38/3.38	
Rated speed [RPM]	1760	1445	1450	
Slip [%]	2.22	3.67	3.33	
Rated torque [kgfm]	2.06	2.51	2.50	
Locked rotor torque [%]	200	140	160	
Breakdown torque [%]	310	220	250	
Service factor	1.15	1.15	1.15	
Temperature rise	80 K	80 K	80 K	
Locked rotor time	21s (cold) 12s (hot)	0s (cold) 0s (hot)	0s (cold) 0s (hot)	
Noise level ²	55.0 dB(A)	53.0 dB(A)	53.0 dB(A)	
Efficiency (%)	25%	87.5	90.4	89.3
	50%	88.5	88.2	87.9
	75%	88.5	87.3	87.6
	100%	89.5	84.8	85.8
Power Factor	25%	0.38	0.44	0.40
	50%	0.63	0.71	0.67
	75%	0.76	0.82	0.79
	100%	0.82	0.86	0.85
Bearing type	: Drive end 6206 ZZ Non drive end 6205 ZZ	Foundation loads		
Sealing	: Without Without Bearing Seal Bearing Seal	Max. traction	: 112 kgf	
Lubrication interval	: - -	Max. compression	: 149 kgf	
Lubricant amount	: - -			
Lubricant type	: Mobil Polyrex EM			
Notes USABLE @208V 14.0A SF 1.00 SFA 14.0A				
This revision replaces and cancel the previous one, which must be eliminated. (1) Looking the motor from the shaft end. (2) Measured at 1m and with tolerance of +3dB(A). (3) Approximate weight subject to changes after manufacturing process. (4) At 100% of full load.		These are average values based on tests with sinusoidal power supply, subject to the tolerances stipulated in NEMA MG-1.		
Rev.	Changes Summary	Performed	Checked	Date
Performed by				
Checked by			Page	Revision
Date	13/05/2022		1 / 4	

LOAD PERFORMANCE CURVE

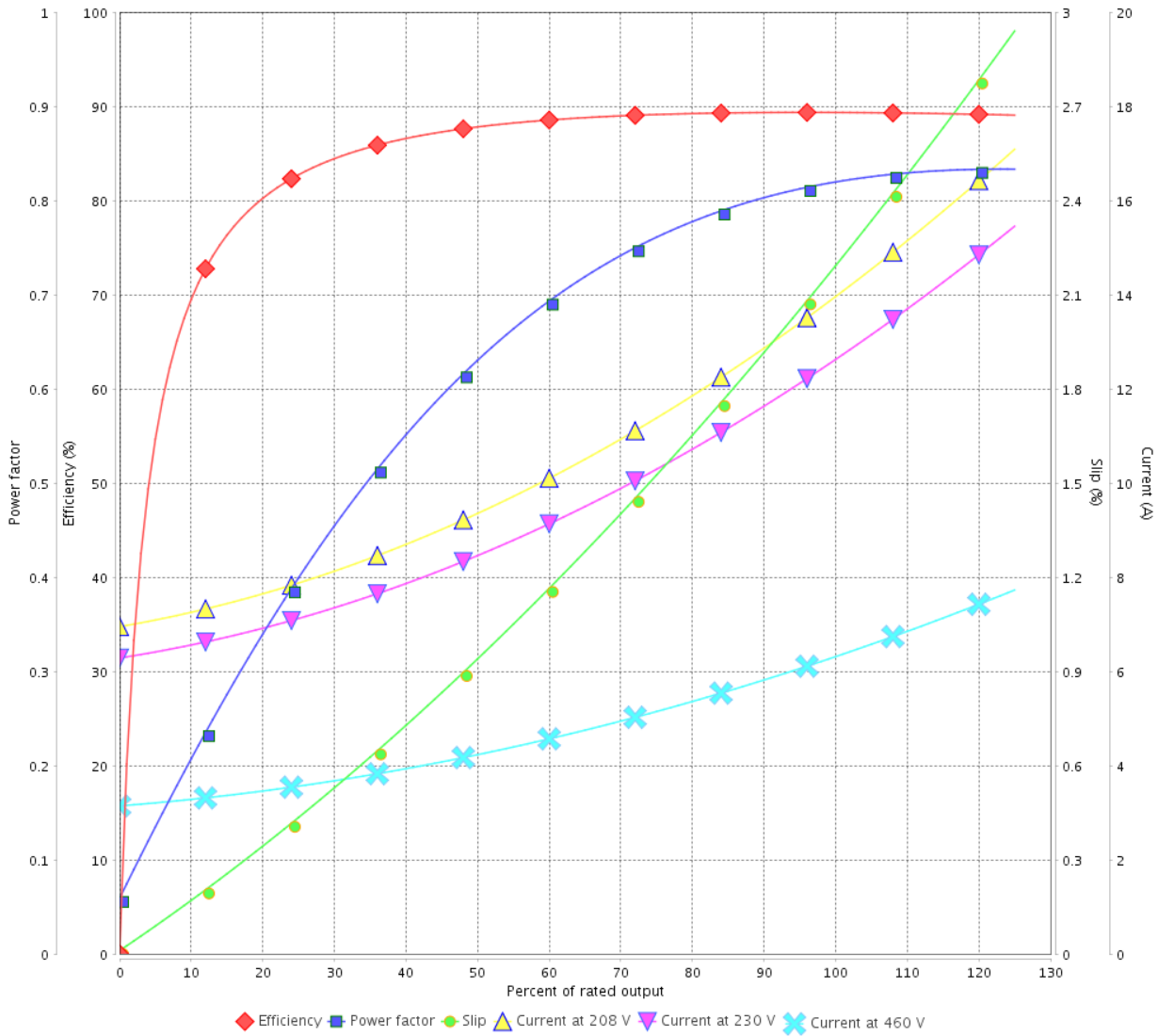
Three Phase Induction Motor - Squirrel Cage



Customer :

Product line : NEMA Premium Efficiency Three-Phase Product code : 12630271

LOAD PERFORMANCE CURVE



Performance : 230/460 V 60 Hz 4P

Rated current : 12.7/6.33 A
 LRC : 7.2
 Rated torque : 2.06 kgfm
 Locked rotor torque : 200 %
 Breakdown torque : 310 %
 Rated speed : 1760 rpm

Moment of inertia (J) : 0.0169 kgm²
 Duty cycle : Cont.(S1)
 Insulation class : F
 Service factor : 1.15
 Temperature rise : 80 K
 Design : B

Rev.	Changes Summary	Performed	Checked	Date
Performed by			Page 2 / 4	Revision
Checked by				
Date	13/05/2022			

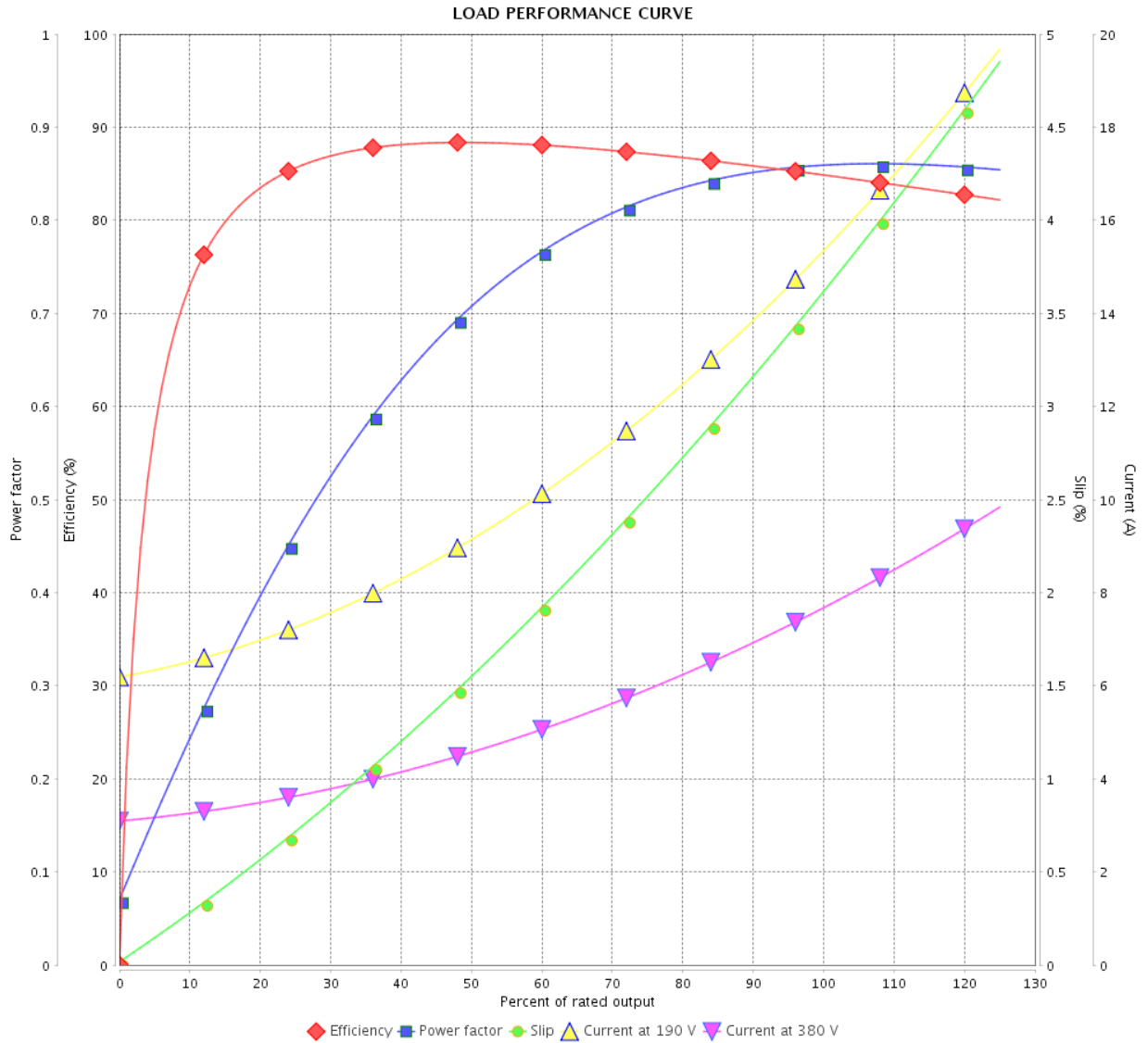
LOAD PERFORMANCE CURVE

Three Phase Induction Motor - Squirrel Cage



Customer : _____

Product line : NEMA Premium Efficiency Three-Phase Product code : 12630271



Performance : 190/380 V 50 Hz 4P

Rated current : 15.4/7.71 A
 LRC : 5.8
 Rated torque : 2.51 kgfm
 Locked rotor torque : 140 %
 Breakdown torque : 220 %
 Rated speed : 1445 rpm

Moment of inertia (J) : 0.0169 kgm²
 Duty cycle : Cont.(S1)
 Insulation class : F
 Service factor : 1.15
 Temperature rise : 80 K
 Design : B

Rev.	Changes Summary	Performed	Checked	Date
Performed by		Page		Revision
Checked by		3 / 4		
Date		13/05/2022		

LOAD PERFORMANCE CURVE

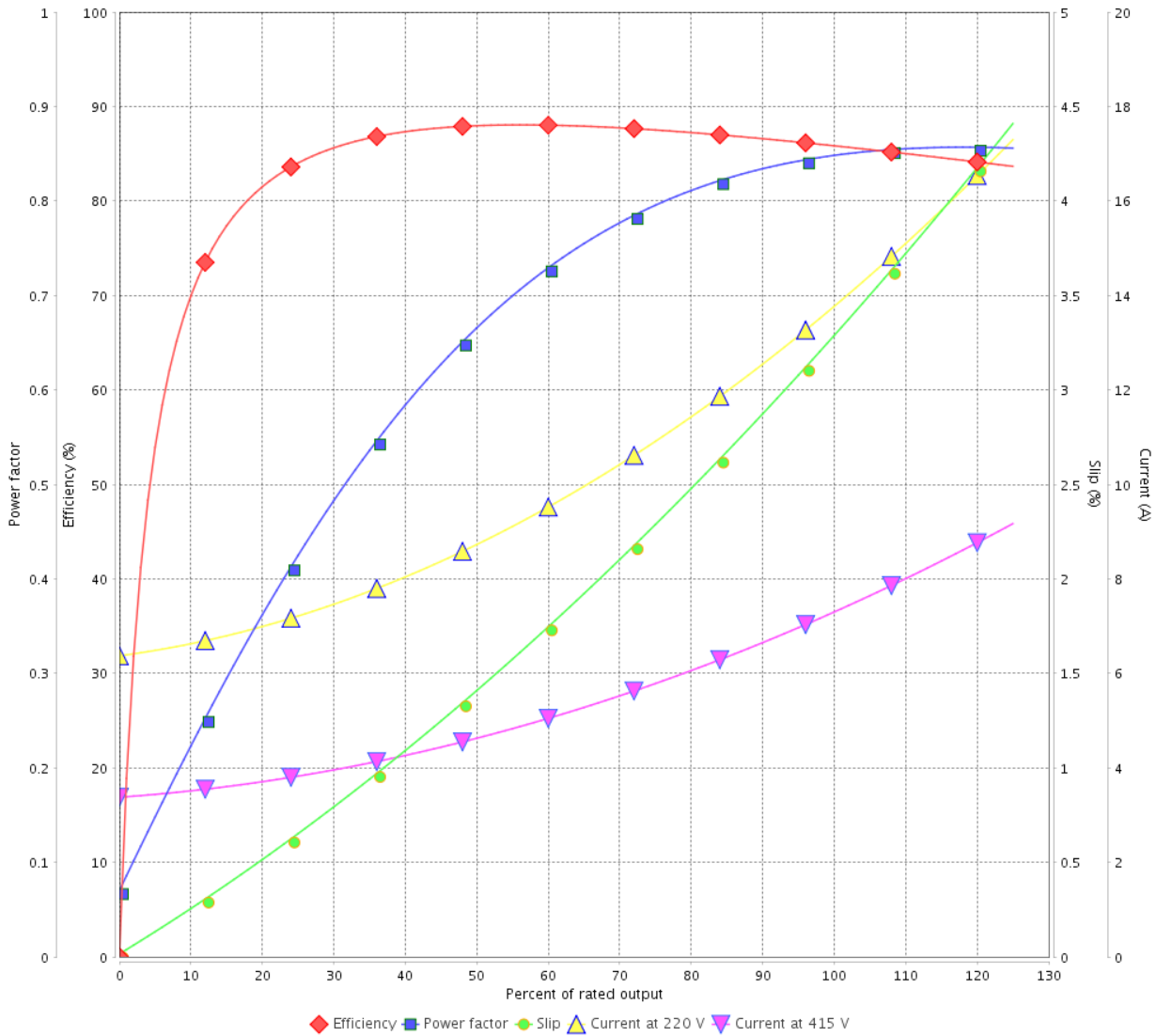
Three Phase Induction Motor - Squirrel Cage



Customer :

Product line : NEMA Premium Efficiency Three-Phase Product code : 12630271

LOAD PERFORMANCE CURVE



Performance : 220/415 V 50 Hz 4P

Rated current : 13.8/7.32 A
 LRC : 6.5
 Rated torque : 2.50 kgfm
 Locked rotor torque : 160 %
 Breakdown torque : 250 %
 Rated speed : 1450 rpm

Moment of inertia (J) : 0.0169 kgm²
 Duty cycle : Cont.(S1)
 Insulation class : F
 Service factor : 1.15
 Temperature rise : 80 K
 Design : B

Rev.	Changes Summary	Performed	Checked	Date
Performed by			Page	Revision
Checked by				
Date				

1 2 3 4 5 6

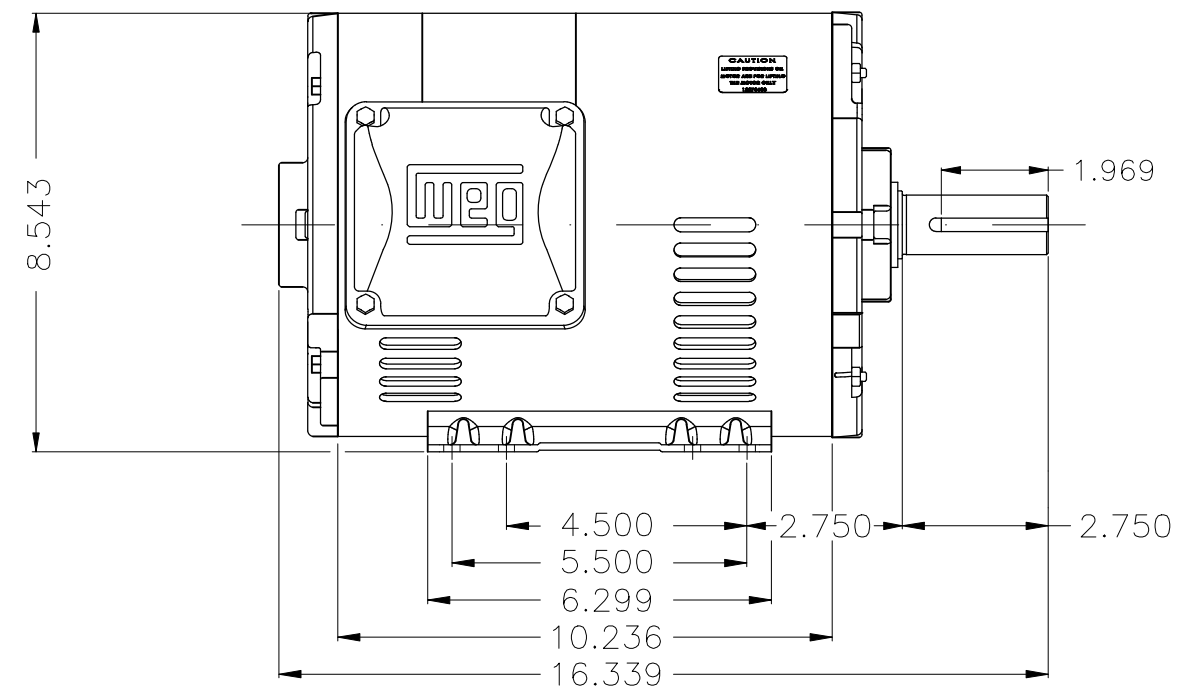
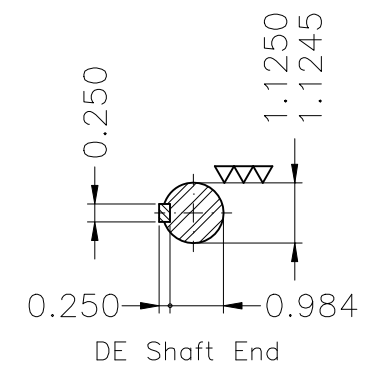
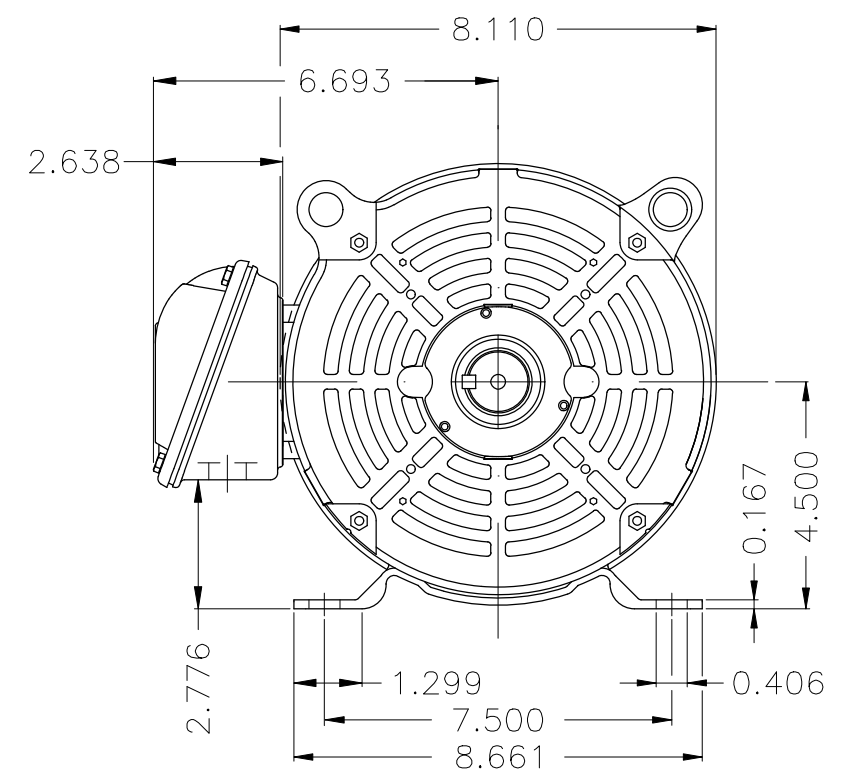
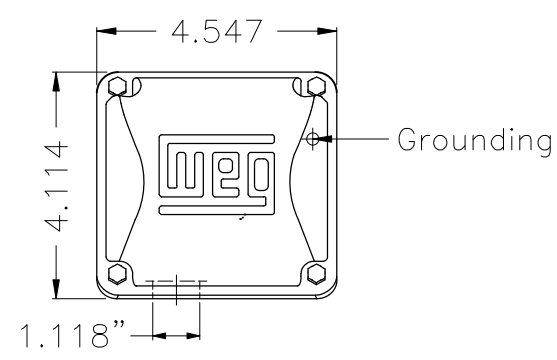
A

B

C

D

E



Color Munsell N 1 matte black											
Painting plan 207N											
Mounting F-1/B3R(D)											
								HYBRISUSER		00	
ECM	LOC	SUMMARY OF MODIFICATIONS					EXECUTED	CHECKED	RELEASED	DATE	VER
EXECUTED	HYBRISUSER	THREE PH. MOTOR ROLLED STEEL NEMA PREM. EFF.						PREVIEW			
CHECKED		FRAME 182/4T IP21 ODP						WDD	00		
RELEASED											
REL. DATE		WMO	Jaragua do Sul			Product Engineering	SHEET	1 / 1			

5 HP 04 Poles 60 Hz

A