

DATA SHEET



Three Phase Induction Motor - Squirrel Cage

| | | | | |
|----------------------------------------------------------------------------------------------------------------------------------------------------------------------------------------------------------------------------------------------------------------------------------------|---------------------------------------------|--------------------------------------------------------------------------------------------------------------------------|---------------------------|----------|
| Customer : | | | | |
| Product line | : NEMA Premium Efficiency Three-Phase | Product code : | 12617115 | |
| Frame | : 143/5T | Cooling method | : IC01 - ODP | |
| Insulation class | : F | Mounting | : F-1 | |
| Duty cycle | : Cont.(S1) | Rotation ¹ | : Both (CW and CCW) | |
| Ambient temperature | : -20°C to +40°C | Starting method | : Direct On Line | |
| Altitude | : 1000 m.a.s.l. | Approx. weight ² | : 18.4 kg | |
| Design | : B | Moment of inertia (J) | : 0.0054 kgm ² | |
| Output [HP] | 3 | 3 | 3 | |
| Poles | 2 | 2 | 2 | |
| Frequency [Hz] | 60 | 50 | 50 | |
| Rated voltage [V] | 230/460 | 190/380 | 220/415 | |
| Rated current [A] | 7.18/3.59 | 8.78/4.39 | 7.83/4.15 | |
| L. R. Amperes [A] | 57.4/28.7 | 53.6/26.8 | 53.2/28.2 | |
| LRC [A] | 8.0x(Code J) | 6.1x(Code G) | 6.8x(Code H) | |
| No load current [A] | 2.60/1.30 | 2.60/1.30 | 2.71/1.44 | |
| Rated speed [RPM] | 3480 | 2825 | 2840 | |
| Slip [%] | 3.33 | 5.83 | 5.33 | |
| Rated torque [kgfm] | 0.626 | 0.771 | 0.767 | |
| Locked rotor torque [%] | 229 | 190 | 220 | |
| Breakdown torque [%] | 300 | 229 | 250 | |
| Service factor | | 1.00 | 1.00 | |
| Temperature rise | 80 K | 105 K | 105 K | |
| Locked rotor time | 16s (cold) 9s (hot) | 0s (cold) 0s (hot) | 0s (cold) 0s (hot) | |
| Noise level ² | 62.0 dB(A) | 60.0 dB(A) | 60.0 dB(A) | |
| Efficiency (%) | 25% | 83.7 | 89.4 | 88.4 |
| | 50% | 84.0 | 86.6 | 86.5 |
| | 75% | 85.5 | 85.0 | 85.6 |
| | 100% | 85.5 | 81.8 | 83.2 |
| Power Factor | 25% | 0.50 | 0.56 | 0.51 |
| | 50% | 0.76 | 0.83 | 0.79 |
| | 75% | 0.86 | 0.90 | 0.88 |
| | 100% | 0.90 | 0.93 | 0.92 |
| Bearing type | : Drive end 6205 ZZ Non drive end 6203 ZZ | Foundation loads | | |
| Sealing | : Without Without Bearing Seal Bearing Seal | Max. traction | : 45 kgf | |
| Lubrication interval | : - - | Max. compression | : 64 kgf | |
| Lubricant amount | : - - | | | |
| Lubricant type | : Mobil Polyrex EM | | | |
| Notes USABLE @208V 7.94A SF 1.00 SFA 7.94A | | | | |
| This revision replaces and cancel the previous one, which must be eliminated. (1) Looking the motor from the shaft end. (2) Measured at 1m and with tolerance of +3dB(A). (3) Approximate weight subject to changes after manufacturing process. (4) At 100% of full load. | | These are average values based on tests with sinusoidal power supply, subject to the tolerances stipulated in NEMA MG-1. | | |
| Rev. | Changes Summary | Performed | Checked | Date |
| Performed by | | | | |
| Checked by | | | Page | Revision |
| Date | 13/05/2022 | | 1 / 4 | |

LOAD PERFORMANCE CURVE

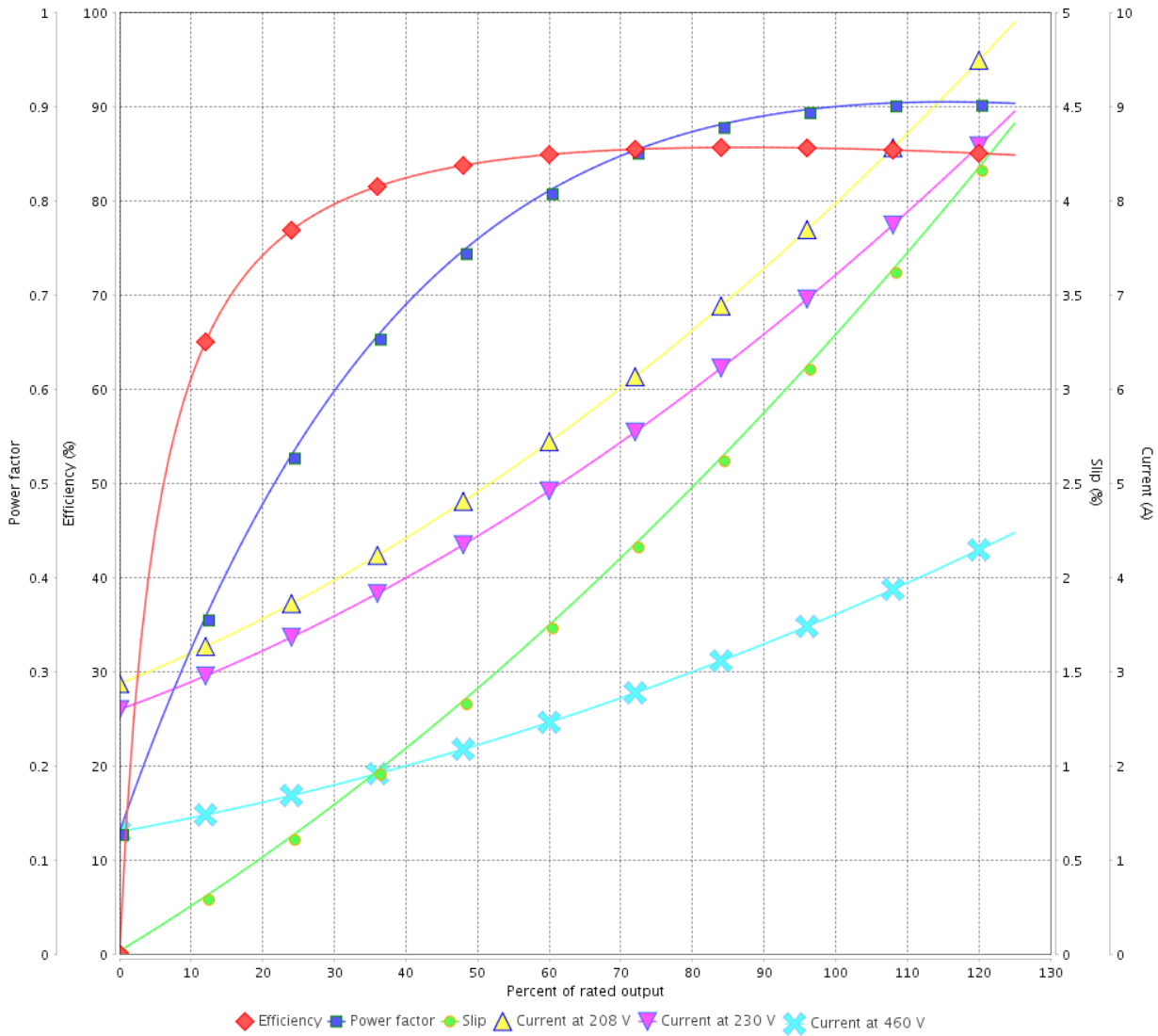
Three Phase Induction Motor - Squirrel Cage



Customer : _____

Product line : NEMA Premium Efficiency Three-Phase Product code : 12617115

LOAD PERFORMANCE CURVE



Performance : 230/460 V 60 Hz 2P

Rated current : 7.18/3.59 A
 LRC : 8.0
 Rated torque : 0.626 kgfm
 Locked rotor torque : 229 %
 Breakdown torque : 300 %
 Rated speed : 3480 rpm

Moment of inertia (J) : 0.0054 kgm²
 Duty cycle : Cont.(S1)
 Insulation class : F
 Service factor :
 Temperature rise : 80 K
 Design : B

| Rev. | Changes Summary | Performed | Checked | Date |
|--------------|-----------------|-----------|---------|----------|
| | | | | |
| Performed by | | | Page | Revision |
| Checked by | | | | |
| Date | | | | |

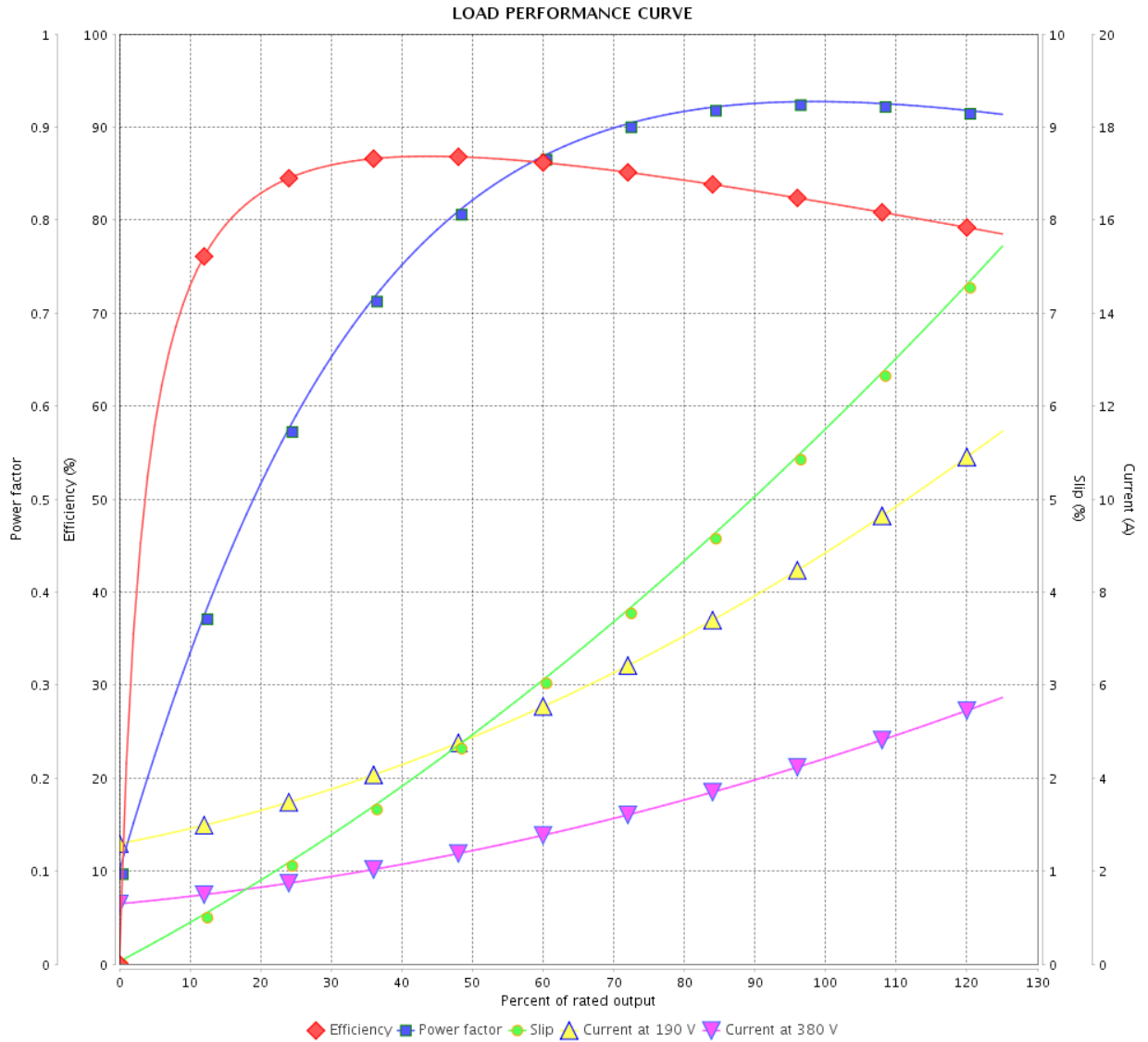
LOAD PERFORMANCE CURVE

Three Phase Induction Motor - Squirrel Cage



Customer : _____

Product line : NEMA Premium Efficiency Three-Phase Product code : 12617115



Performance : 190/380 V 50 Hz 2P

Rated current : 8.78/4.39 A
 LRC : 6.1
 Rated torque : 0.771 kgfm
 Locked rotor torque : 190 %
 Breakdown torque : 229 %
 Rated speed : 2825 rpm

Moment of inertia (J) : 0.0054 kgm²
 Duty cycle : Cont.(S1)
 Insulation class : F
 Service factor : 1.00
 Temperature rise : 105 K
 Design : B

| Rev. | Changes Summary | Performed | Checked | Date |
|--------------|-----------------|------------|---------|----------|
| | | | | |
| Performed by | | Page | | Revision |
| Checked by | | 3 / 4 | | |
| Date | | 13/05/2022 | | |

LOAD PERFORMANCE CURVE

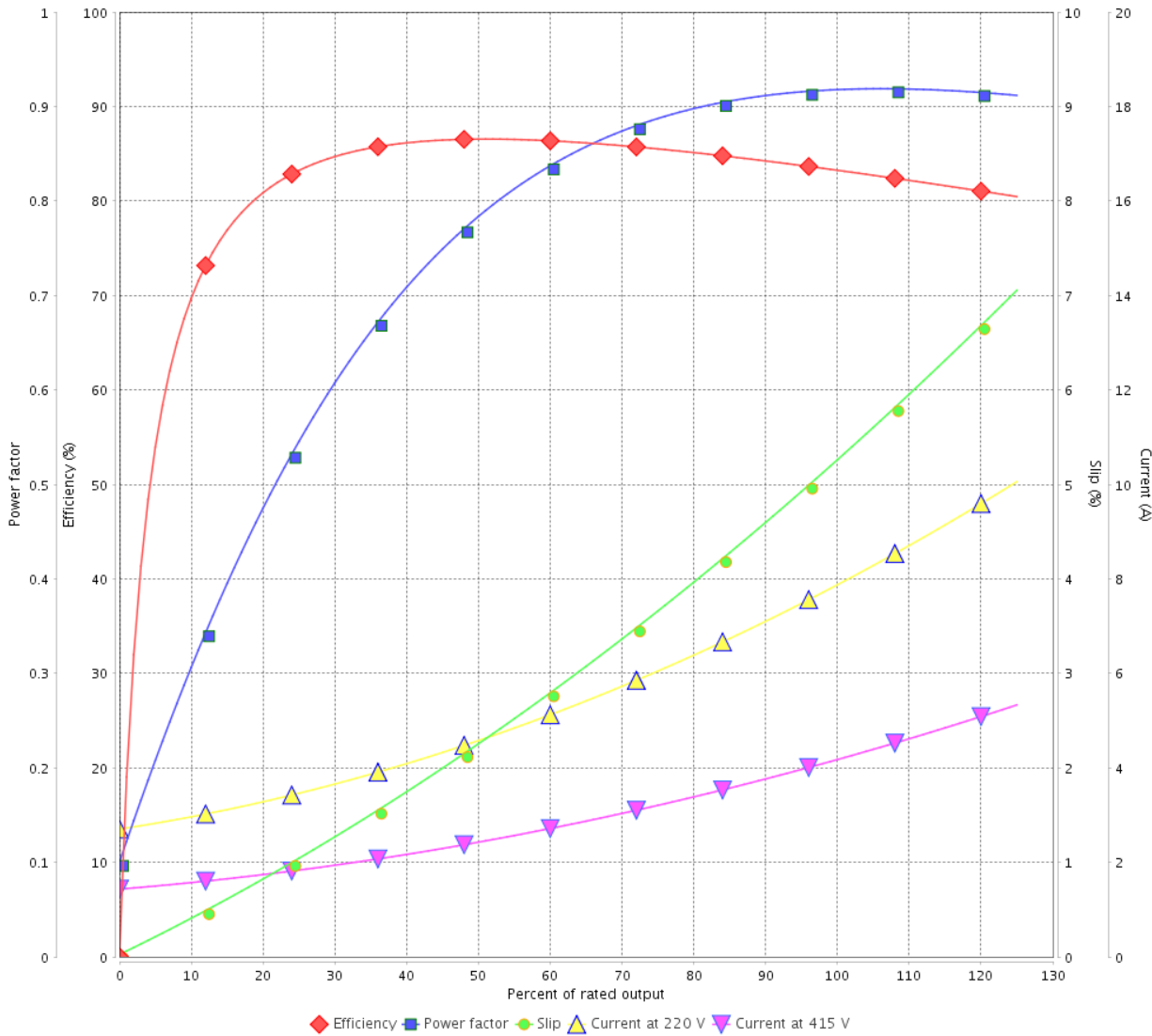
Three Phase Induction Motor - Squirrel Cage



Customer :

Product line : NEMA Premium Efficiency Three-Phase Product code : 12617115

LOAD PERFORMANCE CURVE



Performance : 220/415 V 50 Hz 2P

| | | | |
|---------------------|---------------|-----------------------|---------------------------|
| Rated current | : 7.83/4.15 A | Moment of inertia (J) | : 0.0054 kgm ² |
| LRC | : 6.8 | Duty cycle | : Cont.(S1) |
| Rated torque | : 0.767 kgfm | Insulation class | : F |
| Locked rotor torque | : 220 % | Service factor | : 1.00 |
| Breakdown torque | : 250 % | Temperature rise | : 105 K |
| Rated speed | : 2840 rpm | Design | : B |

| Rev. | Changes Summary | Performed | Checked | Date |
|--------------|-----------------|-----------|---------------|----------|
| | | | | |
| Performed by | | | Page 4 / 4 | Revision |
| Checked by | | | | |
| Date | 13/05/2022 | | | |

1 2 3 4 5 6

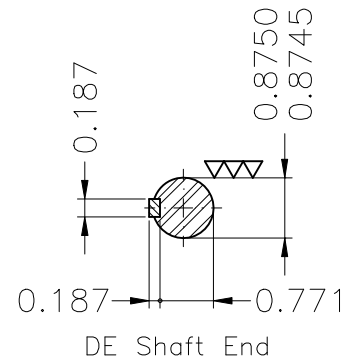
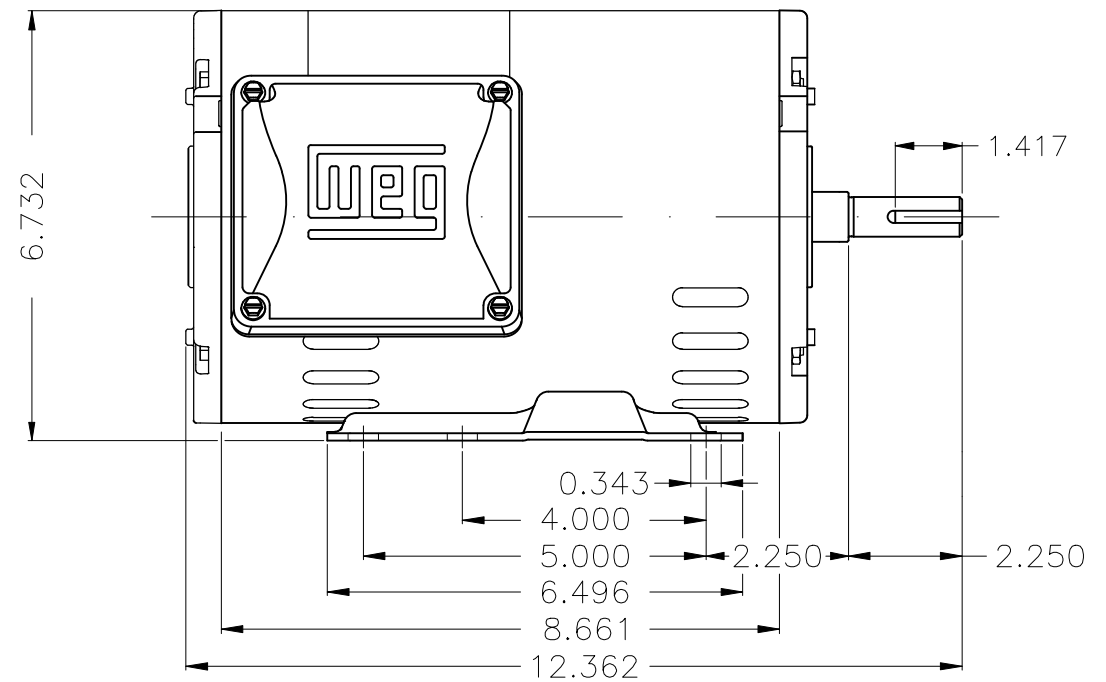
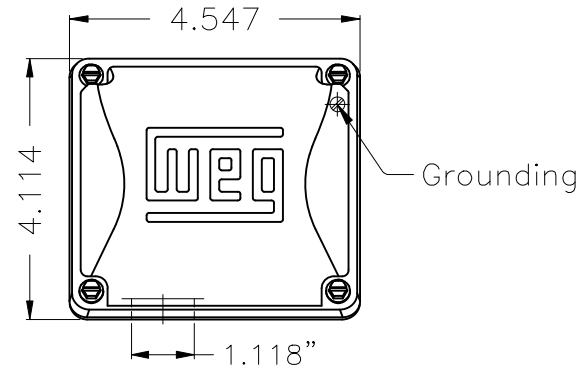
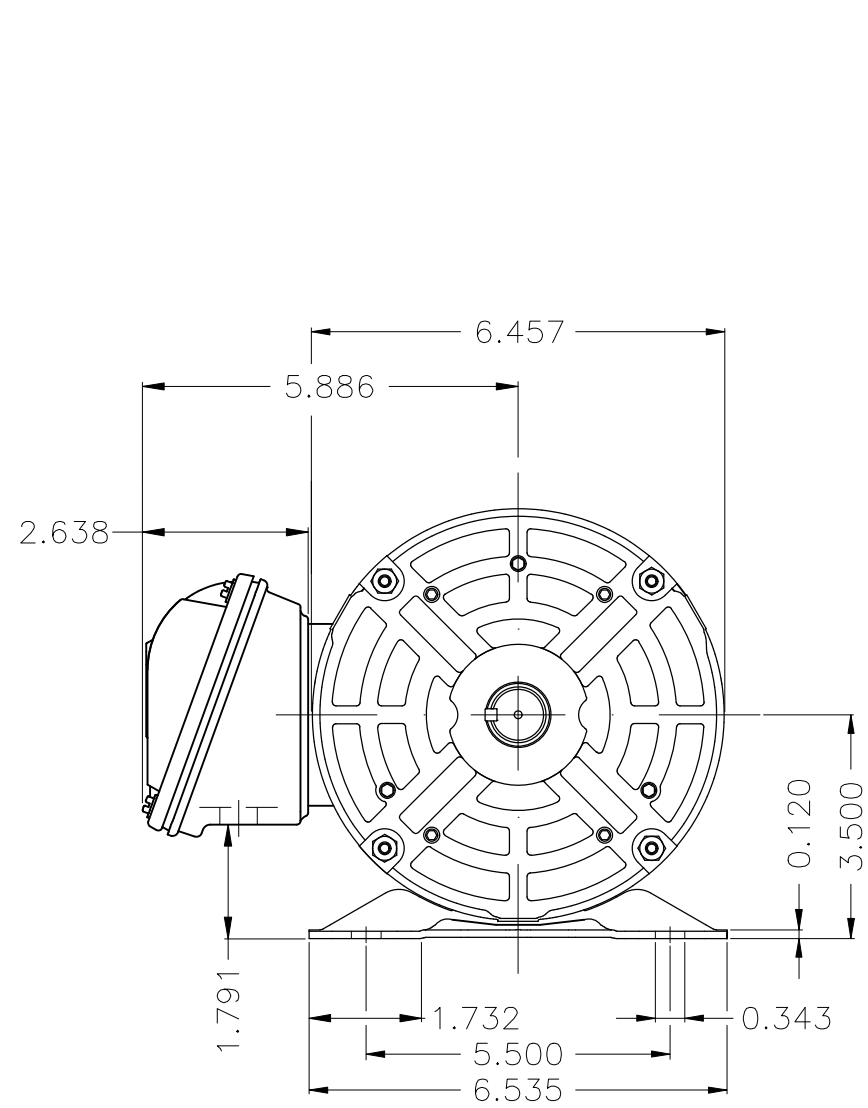
A

B

C

D

E



Color Munsell N 1 matte black
 Painting plan 207N
 Mounting F-1/B3R(D)

| ECM | LOC | SUMMARY OF MODIFICATIONS | EXECUTED | CHECKED | RELEASED | DATE | VER |
|-----------|------------|--------------------------------------------------------------------|---------------------|---------|----------|------|-----|
| EXECUTED | HYBRISUSER | THREE PH. MOTOR ROLLED STEEL NEMA PREM. EFF. FRAME 143/5T IP21 ODP | | | | | |
| CHECKED | | | | | | | |
| RELEASED | | | | | | | |
| REL. DATE | WMO | Jaragua do Sul | Product Engineering | | | | |

3 HP 02 Poles 60 Hz

A

HYBRISUSER 00
PREVIEW
 WDD 00



SHEET 1 / 1