

DATA SHEET

Three Phase Induction Motor - Squirrel Cage



| | | | | |
|--|-----------------|---|--|---|
| Customer : | | | | |
| Product line | | : NEMA Premium Efficiency Three-Phase | Product code : 12682575 | |
| Frame : 143/5T | | Cooling method : IC01 - ODP | | |
| Insulation class : F | | Mounting : F-1 | | |
| Duty cycle : Cont.(S1) | | Rotation ¹ : Both (CW and CCW) | | |
| Ambient temperature : -20°C to +40°C | | Starting method : Direct On Line | | |
| Altitude : 1000 m.a.s.l. | | Approx. weight ³ : 18.0 kg | | |
| Design : B | | Moment of inertia (J) : 0.0049 kgm ² | | |
| Output [HP] | | 2 | | |
| Poles | | 4 | | |
| Frequency [Hz] | | 60 | | |
| Rated voltage [V] | | 575 | | |
| Rated current [A] | | 2.15 | | |
| L. R. Amperes [A] | | 16.6 | | |
| LRC [A] | | 7.7x(Code K) | | |
| No load current [A] | | 1.10 | | |
| Rated speed [RPM] | | 1740 | | |
| Slip [%] | | 3.33 | | |
| Rated torque [kgfm] | | 0.834 | | |
| Locked rotor torque [%] | | 260 | | |
| Breakdown torque [%] | | 320 | | |
| Service factor | | 1.15 | | |
| Temperature rise | | 80 K | | |
| Locked rotor time | | 30s (cold) 17s (hot) | | |
| Noise level ² | | 52.0 dB(A) | | |
| Efficiency (%) | 25% | 85.2 | | |
| | 50% | 85.5 | | |
| | 75% | 86.5 | | |
| | 100% | 86.5 | | |
| Power Factor | 25% | 0.36 | | |
| | 50% | 0.61 | | |
| | 75% | 0.74 | | |
| | 100% | 0.81 | | |
| Bearing type : 6205 ZZ | | Drive end | Non drive end | Foundation loads Max. traction : 67 kgf Max. compression : 85 kgf |
| Sealing : Without | | Bearing Seal | Bearing Seal | |
| Lubrication interval : - | | | | |
| Lubricant amount : - | | | | |
| Lubricant type : Mobil Polyrex EM | | | | |
| Notes | | | | |
| This revision replaces and cancel the previous one, which must be eliminated. (1) Looking the motor from the shaft end. (2) Measured at 1m and with tolerance of +3dB(A). (3) Approximate weight subject to changes after manufacturing process. (4) At 100% of full load. | | | These are average values based on tests with sinusoidal power supply, subject to the tolerances stipulated in NEMA MG-1. | |
| Rev. | Changes Summary | | Performed | Checked |
| | | | | |
| Performed by | | | | |
| Checked by | | | Page | Revision |
| Date | 13/05/2022 | | 1 / 2 | |

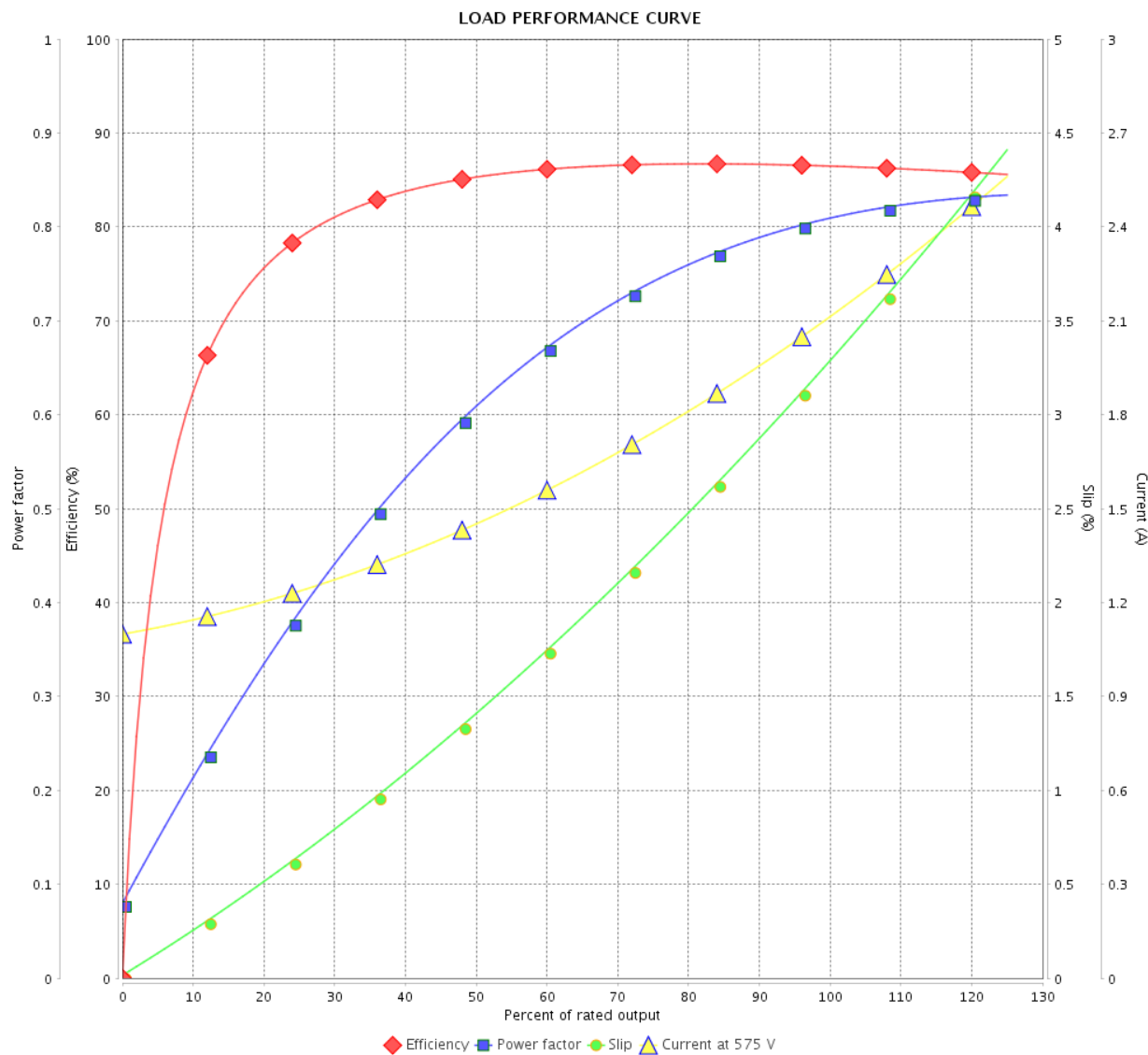
LOAD PERFORMANCE CURVE

Three Phase Induction Motor - Squirrel Cage



Customer :

Product line : NEMA Premium Efficiency Three-Phase Product code : 12682575

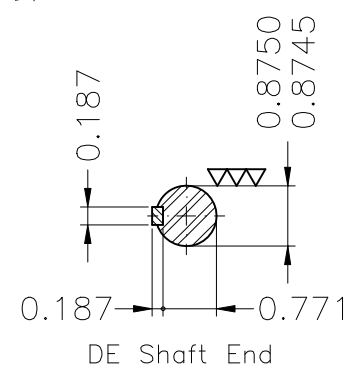
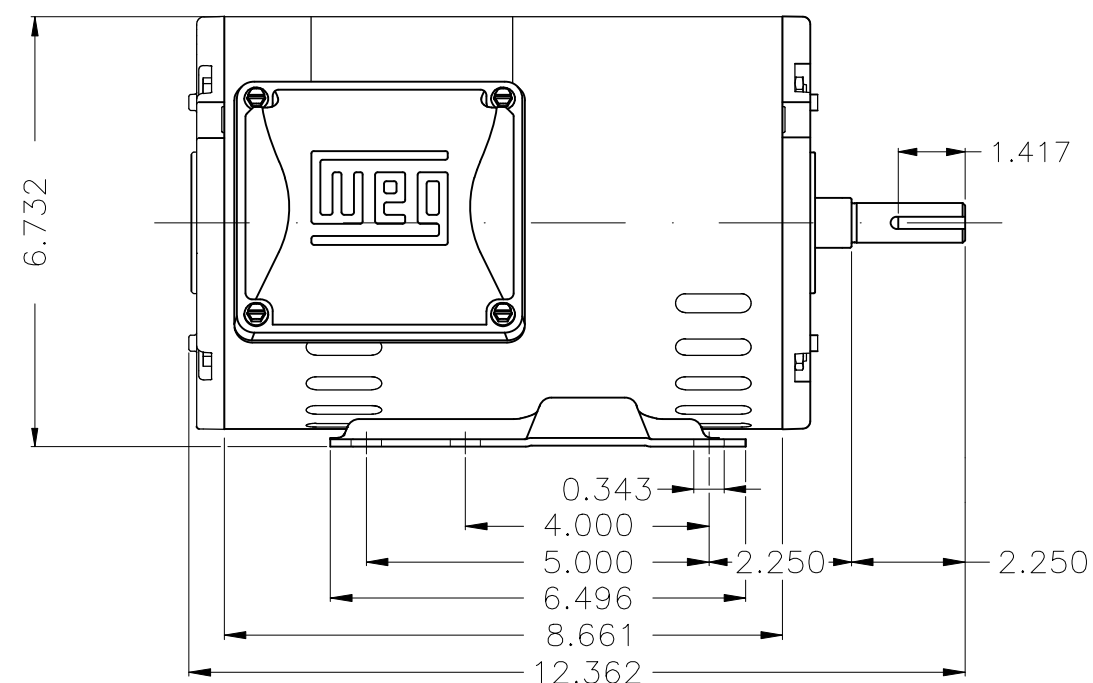
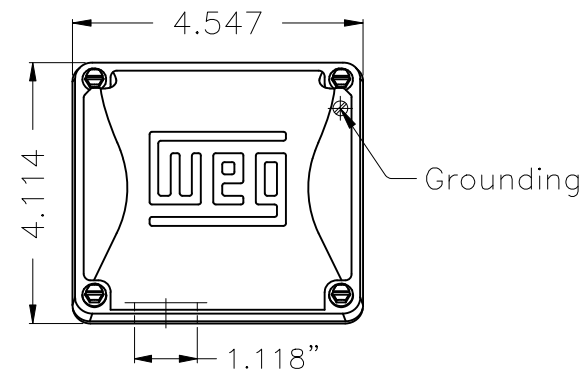


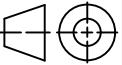

Performance : 575 V 60 Hz 4P

Rated current : 2.15 A
LRC : 7.7
Rated torque : 0.834 kgfm
Locked rotor torque : 260 %
Breakdown torque : 320 %
Rated speed : 1740 rpm

Moment of inertia (J) : 0.0049 kgm²
Duty cycle : Cont.(S1)
Insulation class : F
Service factor : 1.15
Temperature rise : 80 K
Design : B

| Rev. | Changes Summary | | Performed | Checked | Date |
|--------------|-----------------|--|-----------|---------|----------|
| | | | | | |
| Performed by | | | | Page | Revision |
| Checked by | | | | 2 / 2 | |
| Date | | | | | |
| | 13/05/2022 | | | | |



| | | | | | | | | | |
|-------------------------------|------------|---|---|---------------------|----------|---------------------|----------|---|-----|
| Color Munsell N 1 matte black | | | | | | | | | |
| Painting plan 207N | | | | | | | | | |
| Mounting F-1/B3R(D) | | | | | | | | | |
| | | | | | | | | | |
| | | | | | | | | | |
| | | | | | | | | | |
| | | | | HYBRISUSER | | | | | 00 |
| ECM | LOC | SUMMARY OF MODIFICATIONS | | | EXECUTED | CHECKED | RELEASED | DATE | VER |
| EXECUTED | HYBRISUSER |  | THREE PH. MOTOR ROLLED STEEL NEMA PREM. EFF. FRAME 143/5T IP21 ODP | | | PREVIEW WDD 00 | |  | |
| CHECKED | | | | | | | | | |
| RELEASED | | | | | | | | | |
| REL. DATE | | WMO | Jaragua do Sul | Product Engineering | SHEET | 1 / 1 | | | |