

DATA SHEET



Three Phase Induction Motor - Squirrel Cage

Customer	:				
Product line	: NEMA Premium Efficiency Three-Phase	Product code :	12682577		
Frame	: 143/5T	Cooling method	: IC01 - ODP		
Insulation class	: F	Mounting	: F-1		
Duty cycle	: Cont.(S1)	Rotation ¹	: Both (CW and CCW)		
Ambient temperature	: -20°C to +40°C	Starting method	: Direct On Line		
Altitude	: 1000 m.a.s.l.	Approx. weight ³	: 16.8 kg		
Design	: B	Moment of inertia (J)	: 0.0049 kgm ²		
Output [HP]	2				
Poles	2				
Frequency [Hz]	60				
Rated voltage [V]	575				
Rated current [A]	1.94				
L. R. Amperes [A]	17.2				
LRC [A]	8.9x(Code K)				
No load current [A]	0.734				
Rated speed [RPM]	3510				
Slip [%]	2.50				
Rated torque [kgfm]	0.414				
Locked rotor torque [%]	220				
Breakdown torque [%]	330				
Service factor	1.15				
Temperature rise	80 K				
Locked rotor time	25s (cold) 14s (hot)				
Noise level ²	62.0 dB(A)				
Efficiency (%)	25%	83.7			
	50%	84.0			
	75%	85.5			
	100%	85.5			
Power Factor	25%	0.49			
	50%	0.77			
	75%	0.86			
	100%	0.91			
Bearing type	: Drive end	Non drive end	Foundation loads		
Sealing	: 6205 ZZ	6203 ZZ	Max. traction	: 30 kgf	
Lubrication interval	: Without	Without	Max. compression	: 47 kgf	
Lubricant amount	: Bearing Seal	Bearing Seal			
Lubricant type	: -	-			
Notes					
This revision replaces and cancel the previous one, which must be eliminated. (1) Looking the motor from the shaft end. (2) Measured at 1m and with tolerance of +3dB(A). (3) Approximate weight subject to changes after manufacturing process. (4) At 100% of full load.			These are average values based on tests with sinusoidal power supply, subject to the tolerances stipulated in NEMA MG-1.		
Rev.	Changes Summary		Performed	Checked	Date
Performed by					
Checked by				Page	Revision
Date	13/05/2022			1 / 2	

LOAD PERFORMANCE CURVE

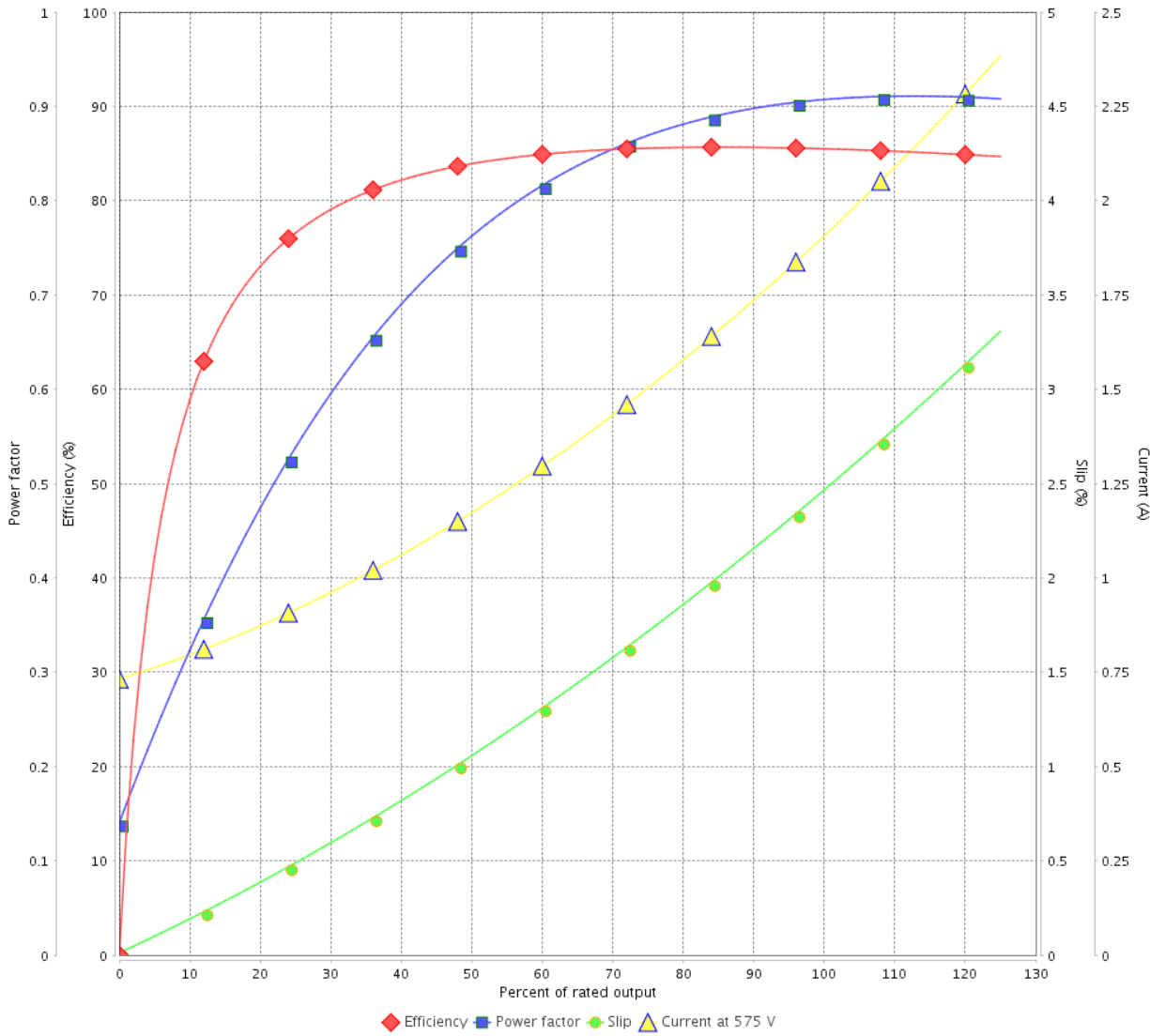
Three Phase Induction Motor - Squirrel Cage



Customer : _____

Product line : NEMA Premium Efficiency Three-Phase Product code : 12682577

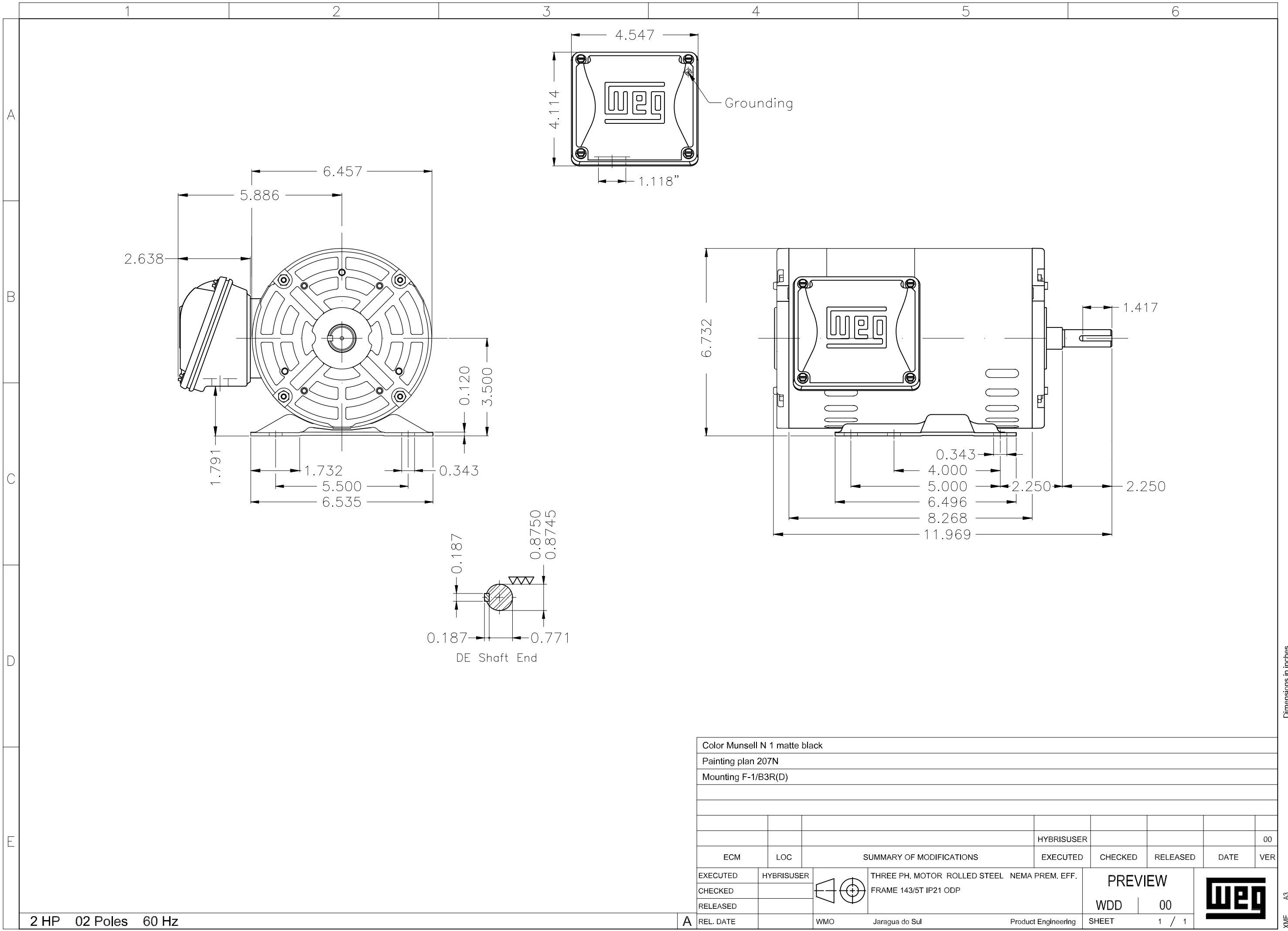
LOAD PERFORMANCE CURVE



Performance : 575 V 60 Hz 2P

Rated current	: 1.94 A	Moment of inertia (J)	: 0.0049 kgm ²
LRC	: 8.9	Duty cycle	: Cont.(S1)
Rated torque	: 0.414 kgfm	Insulation class	: F
Locked rotor torque	: 220 %	Service factor	: 1.15
Breakdown torque	: 330 %	Temperature rise	: 80 K
Rated speed	: 3510 rpm	Design	: B

Rev.	Changes Summary	Performed	Checked	Date
Performed by			Page 2 / 2	Revision
Checked by				
Date	13/05/2022			



Color Munsell N 1 matte black									
Painting plan 207N									
Mounting F-1/B3R(D)									
						00			
ECM	LOC	SUMMARY OF MODIFICATIONS			EXECUTED	CHECKED	RELEASED	DATE	VER
EXECUTED	HYBRISUSER	THREE PH. MOTOR ROLLED STEEL NEMA PREM. EFF.				PREVIEW WDD 00			
CHECKED		FRAME 143/5T IP21 ODP							
RELEASED									
REL. DATE		WMO	Jaragua do Sul	Product Engineering	SHEET	1 / 1			

2 HP 02 Poles 60 Hz

A