

# DATA SHEET

## Three Phase Induction Motor - Squirrel Cage



Customer : V.J. PAMENSKY CANADA INC.

Product line : W01 - TEFC - Nema Premium Efficiency Product code : 19060472

Frame	: 143/5TC	Locked rotor time	: 19 s (hot) 34 s (cold)
Output	: 1 HP (0.75 kW)	Temperature rise	: 80 K
Poles	: 4	Duty cycle	: S1
Frequency	: 60 Hz	Ambient temperature	: -20 °C to +40 °C
Rated voltage	: 575 V	Altitude	: 3280 ft
Rated current	: 1.18 A	Protection degree	: IP55
L. R. Amperes	: 10.1 A	Cooling method	: IC411 - TEFC
LRC	: 8.6	Mounting	: F-1/B34R(D)
No load current	: 0.712 A	Rotation <sup>1</sup>	: Both
Rated speed	: 1765 rpm	Noise level <sup>2</sup>	: 52.0 dB(A)
Slip	: 1.94 %	Vibration class	: A
Rated torque	: 2.94 ft.lb	Starting method	: Direct On Line
Locked rotor torque	: 280 %	Approx. weight <sup>3</sup>	: 37.9 lb
Pull up torque	: 235 %	Painting plan	: 207N
Breakdown torque	: 300 %	Color	: MUNSELL N 1 - MATTE
Insulation class	: F	Design	: B
Service factor	: 1.15		
Moment of inertia (J)	: 0.1234 sq.ft.lb		

Output	50%	75%	100%	Load type	: -
Efficiency (%)	82.5	84.0	85.5	Load torque	: -
Power Factor	0.52	0.66	0.75	Load inertia (J=GD <sup>2</sup> /4)	: -

	Drive end	Non drive end	Foundation loads	
Bearing type #1	6205-ZZ	6203-ZZ	Max. traction	:
Bearing type #2	-	-	Max. compression	:
Lubrication interval	-	-		
Lubricant amount #1	-	-		
Lubricant amount #2	-	-		
Lubricant type	MOBIL POLYREX EM			

Notes  
See notes on page 2.

Losses at normative operating points (speed;torque), in percentage of rated output power						
P1 (0,9;1,0)	P2 (0,5;1,0)	P3 (0,25;1,0)	P4 (0,9;0,5)	P5 (0,5;0,5)	P6 (0,5;0,25)	P7 (0,25;0,25)
18.2	15.3	15.5	10.8	7.7	6.1	4.6

This revision replaces and cancel the previous one, which must be eliminated.  
 (1) Looking the motor from the shaft end.  
 (2) Measured at 1m and with tolerance of +3dB(A).  
 (3) Approximate weight, subject to be changed after manufacturing process.

These are average values based on tests with sinusoidal power supply, subject to the tolerances stipulated in NEMA MG 1-12.

Rev.	Changes Summary		Rev.	Checked	Date
Performed by	farazq			1860038179	
Checked by	AUTOMATICO			Page	Rev.
Date	12/06/2026			1 / 2	0

# DATA SHEET

## Three Phase Induction Motor - Squirrel Cage



Customer : V.J. PAMENSKY CANADA INC.

Product line : W01 - TEFC - Nema Premium Efficiency      Product code : 19060472

Thermal protection ID	Application	Type	Quantity	Sensing Temperature
-----------------------	-------------	------	----------	---------------------

Notes

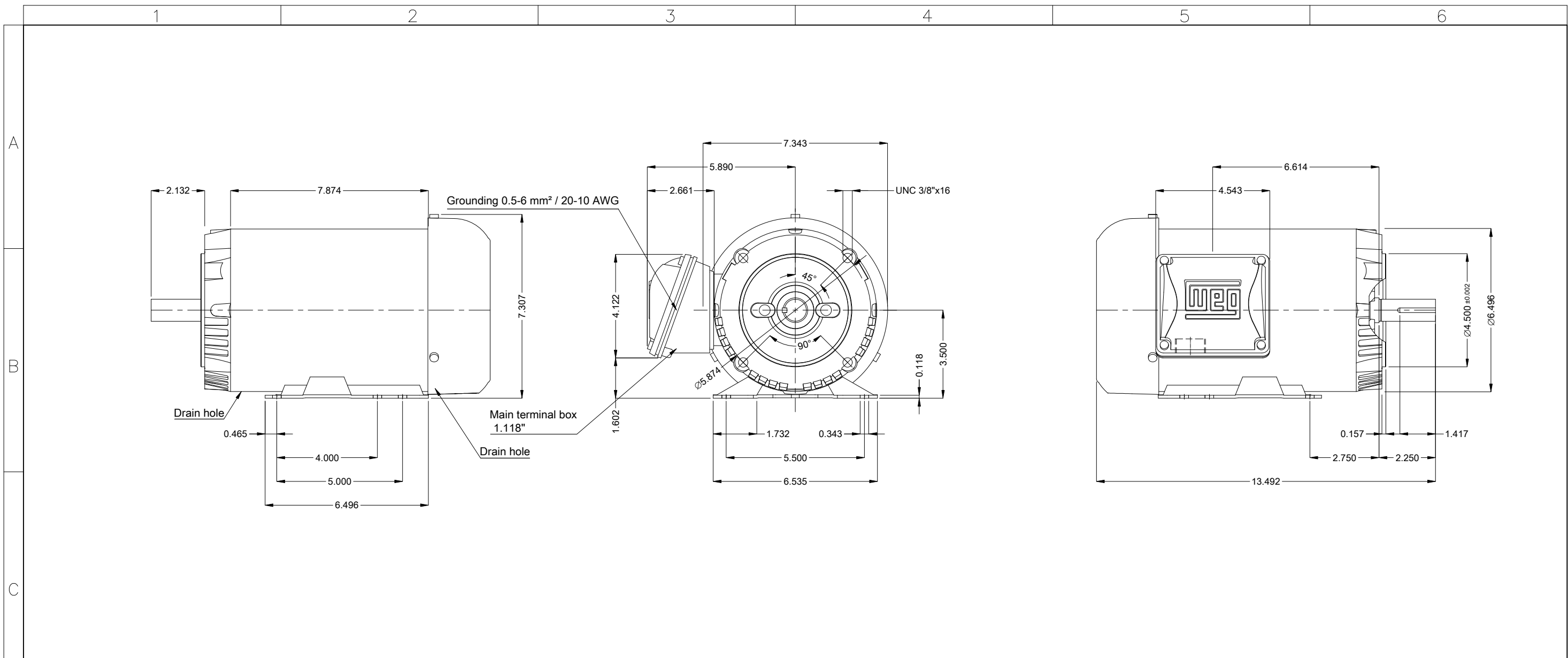
Standards	Specification : MG1 - Part 10	Vibration : MG1 - Part 7
	Test : MG1 - Part 12	Tolerance : MG1 - Part 12
	Noise : MG1 - Part 9	

This revision replaces and cancel the previous one, which must be eliminated.

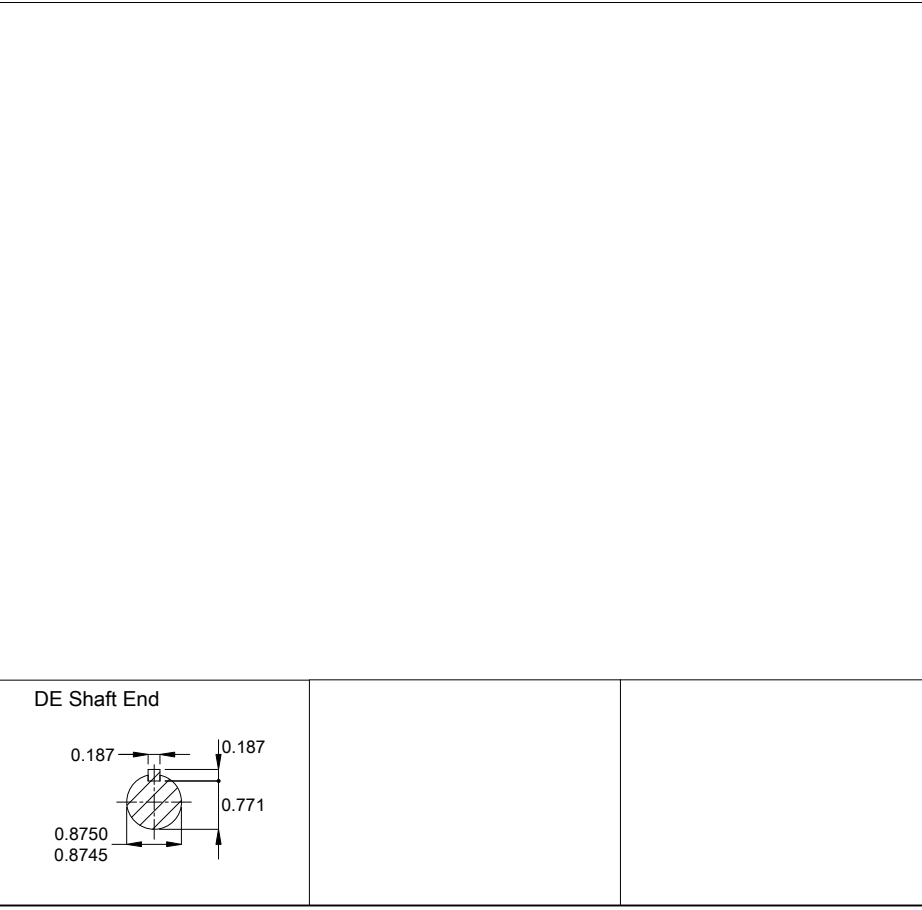
- (1) Looking the motor from the shaft end.
- (2) Measured at 1m and with tolerance of +3dB(A).
- (3) Approximate weight, subject to be changed after manufacturing process.

These are average values based on tests with sinusoidal power supply, subject to the tolerances stipulated in NEMA MG 1-12.

Rev.	Changes Summary	Rev.	Checked	Date
Performed by	farazq	1860038179		
Checked by	AUTOMATICO	Page	Rev.	
Date	12/06/2026	2 / 2	0	



Internal AEGIS ground ring on the DE
Reinforce the foot with 2 mig welding spots
Fan cover - steel plate
Color Munsell N 1 matte black
Painting plan 207N
Mounting MARKET F-1/B34R(D)
Mounting B34D



1 HP 04 Poles 60 Hz										A	
										Scale	1 : 4
										HYBRISUSER	00
ECM	LOC	SUMMARY OF MODIFICATIONS					EXECUTED	CHECKED	RELEASED	DATE	VER
EXECUTED	HYBRISUSER	THREE PH. MOTOR ROLLED STEEL NEMA PREM. EFF.					PREVIEW				
CHECKED		FRAME 143/5TC IP55 TEFC					WDD	00			
RELEASED							SHEET		1 / 1		
REL. DATE											