

# DATA SHEET

## Three Phase Induction Motor - Squirrel Cage



Customer :				
Product line		: NEMA Premium Efficiency Three-Phase	Product code : 12682573	
Frame : 143/5T		Cooling method : IC01 - ODP		
Insulation class : F		Mounting : F-1		
Duty cycle : Cont.(S1)		Rotation <sup>1</sup> : Both (CW and CCW)		
Ambient temperature : -20°C to +40°C		Starting method : Direct On Line		
Altitude : 1000 m.a.s.l.		Approx. weight <sup>3</sup> : 19.2 kg		
Design : B		Moment of inertia (J) : 0.0060 kgm <sup>2</sup>		
Output [HP]		1.5		
Poles		4		
Frequency [Hz]		60		
Rated voltage [V]		575		
Rated current [A]		1.66		
L. R. Amperes [A]		14.4		
LRC [A]		8.7x(Code L)		
No load current [A]		0.958		
Rated speed [RPM]		1760		
Slip [%]		2.22		
Rated torque [kgfm]		0.619		
Locked rotor torque [%]		280		
Breakdown torque [%]		330		
Service factor		1.15		
Temperature rise		80 K		
Locked rotor time		27s (cold) 15s (hot)		
Noise level <sup>2</sup>		52.0 dB(A)		
Efficiency (%)	25%	83.6		
	50%	84.0		
	75%	86.5		
	100%	86.5		
Power Factor	25%	0.32		
	50%	0.56		
	75%	0.69		
	100%	0.77		
Bearing type : 6205 ZZ		Drive end	Non drive end	Foundation loads
Sealing : Without				Max. traction : 48 kgf
Lubrication interval : -		Bearing Seal	Bearing Seal	Max. compression : 68 kgf
Lubricant amount : -				
Lubricant type : Mobil Polyrex EM				
Notes				
This revision replaces and cancel the previous one, which must be eliminated. (1) Looking the motor from the shaft end. (2) Measured at 1m and with tolerance of +3dB(A). (3) Approximate weight subject to changes after manufacturing process. (4) At 100% of full load.			These are average values based on tests with sinusoidal power supply, subject to the tolerances stipulated in NEMA MG-1.	
Rev.	Changes Summary		Performed	Checked
Performed by				
Checked by				
Date	13/05/2022		Page 1 / 2	Revision

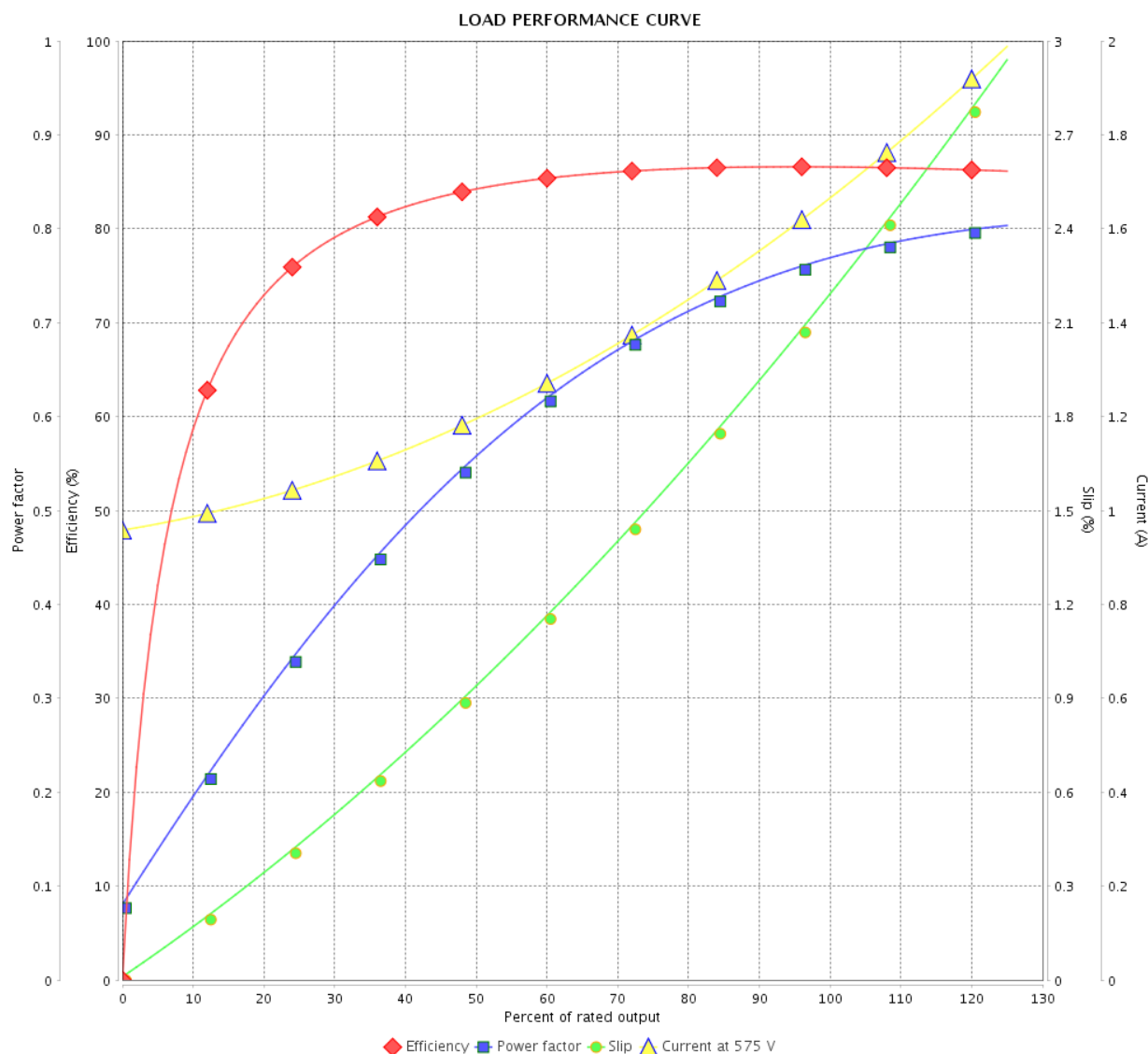
# LOAD PERFORMANCE CURVE

## Three Phase Induction Motor - Squirrel Cage



Customer :

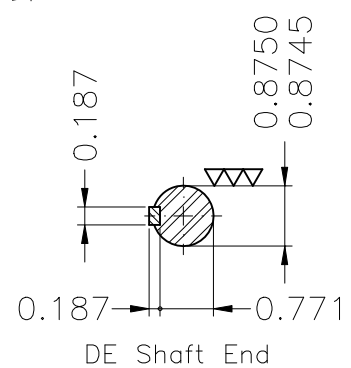
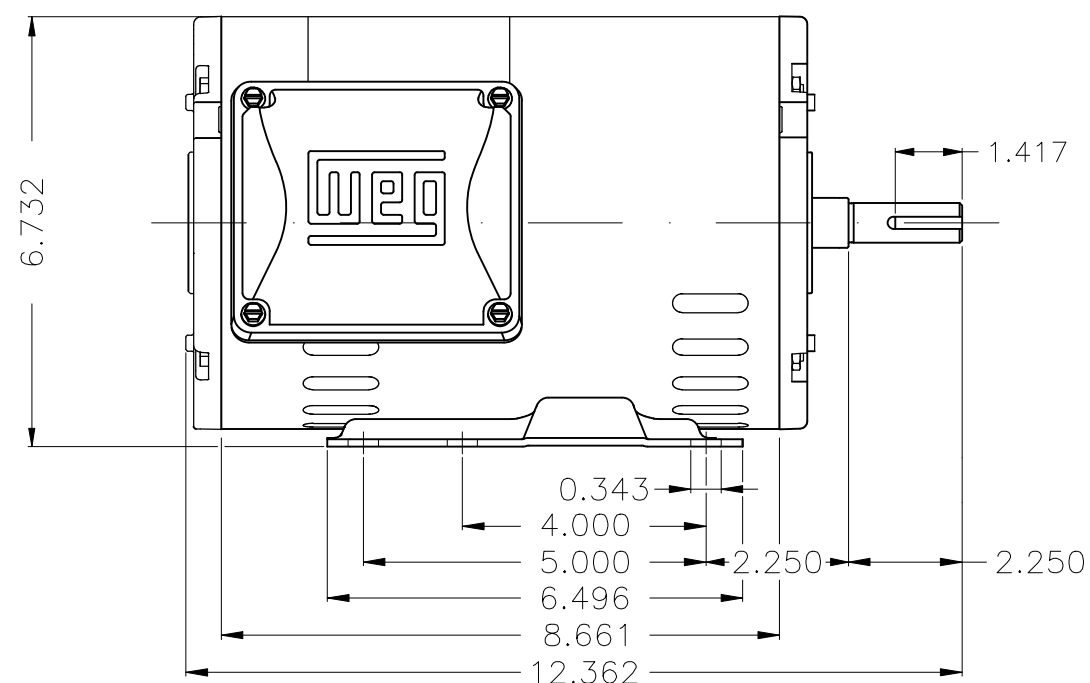
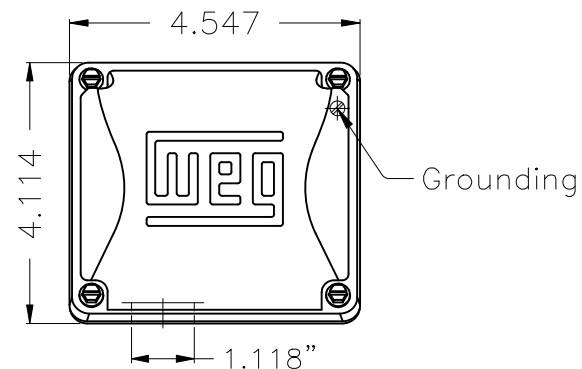
Product line : NEMA Premium Efficiency Three-Phase      Product code : 12682573

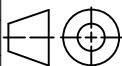



Performance : 575 V 60 Hz 4P

Rated current	: 1.66 A	Moment of inertia (J)	: 0.0060 kgm <sup>2</sup>
LRC	: 8.7	Duty cycle	: Cont.(S1)
Rated torque	: 0.619 kgfm	Insulation class	: F
Locked rotor torque	: 280 %	Service factor	: 1.15
Breakdown torque	: 330 %	Temperature rise	: 80 K
Rated speed	: 1760 rpm	Design	: B

Rev.	Changes Summary	Performed	Checked	Date
Performed by		Page 2 / 2      Revision		
Checked by				
Date	13/05/2022			



Color Munsell N 1 matte black									
Painting plan 207N									
Mounting F-1/B3R(D)									
				HYBRISUSER					00
ECM	LOC	SUMMARY OF MODIFICATIONS			EXECUTED	CHECKED	RELEASED	DATE	VER
EXECUTED	HYBRISUSER		THREE PH. MOTOR ROLLED STEEL NEMA PREM. EFF. FRAME 143/5T IP21 ODP			PREVIEW WDD   00			
CHECKED									
RELEASED									
REL. DATE		WMO	Jaragua do Sul	Product Engineering	SHEET	1 / 1			