

DATA SHEET



Single Phase Induction Motor - Squirrel Cage

Customer :

Product line : Rolled Steel 00022 Single-Phase Product code : 18463442

Frame	: 56	Locked rotor time	: 18s (cold) 10s (hot)
Output	: 0.75 HP (0.55 kW)	Temperature rise	: 80 K
Frequency	: 60 Hz	Duty cycle	: Cont.(S1)
Rated voltage	: 115/230 V	Ambient temperature	: -20°C to +40°C
Poles	: 4	Altitude	: 1000 m.a.s.l.
Rated current	: 10.6/5.30 A	Protection degree	: IP55
	: 6.4x(Code M)	Cooling method	: IC411 - TEFC
Rated speed	: 1745 rpm	Mounting	: F-1
Rated torque	: 0.312 kgfm	Rotation ¹	: Both (CW and CCW)
Insulation class	: F	Noise level ²	: 54.0 dB(A)
Service factor	: 1.15	Starting method	: Direct On Line
Moment of inertia (J)	: 0.0033 kgm ²	Approx. weight ³	: 14.3 kg
Design	: N		

Output	50%	75%	100%	Foundation loads	
Efficiency (%)	57.0	65.0	68.5	Max. traction	: 20 kgf
Power Factor	0.47	0.58	0.67	Max. compression	: 34 kgf

		<u>Drive end</u>	<u>Non drive end</u>
Bearing type	:	6203 2RS	6202 2RS
Sealing	:	V'Ring	Without Bearing Seal
Lubrication interval	:	-	-
Lubricant amount	:	-	-
Lubricant type	:	Mobil Polyrex EM	

Notes

This revision replaces and cancel the previous one, which must be eliminated.

- (1) Looking the motor from the shaft end.
- (2) Measured at 1m and with tolerance of +3dB(A).
- (3) Approximate weight subject to changes after manufacturing process.
- (4) At 100% of full load.

These are average values based on tests with sinusoidal power supply, subject to the tolerances stipulated in NEMA MG-1.

Rev.	Changes Summary	Performed	Checked	Date
Performed by		Page		Revision
Checked by		1 / 2		
Date	11/05/2026			

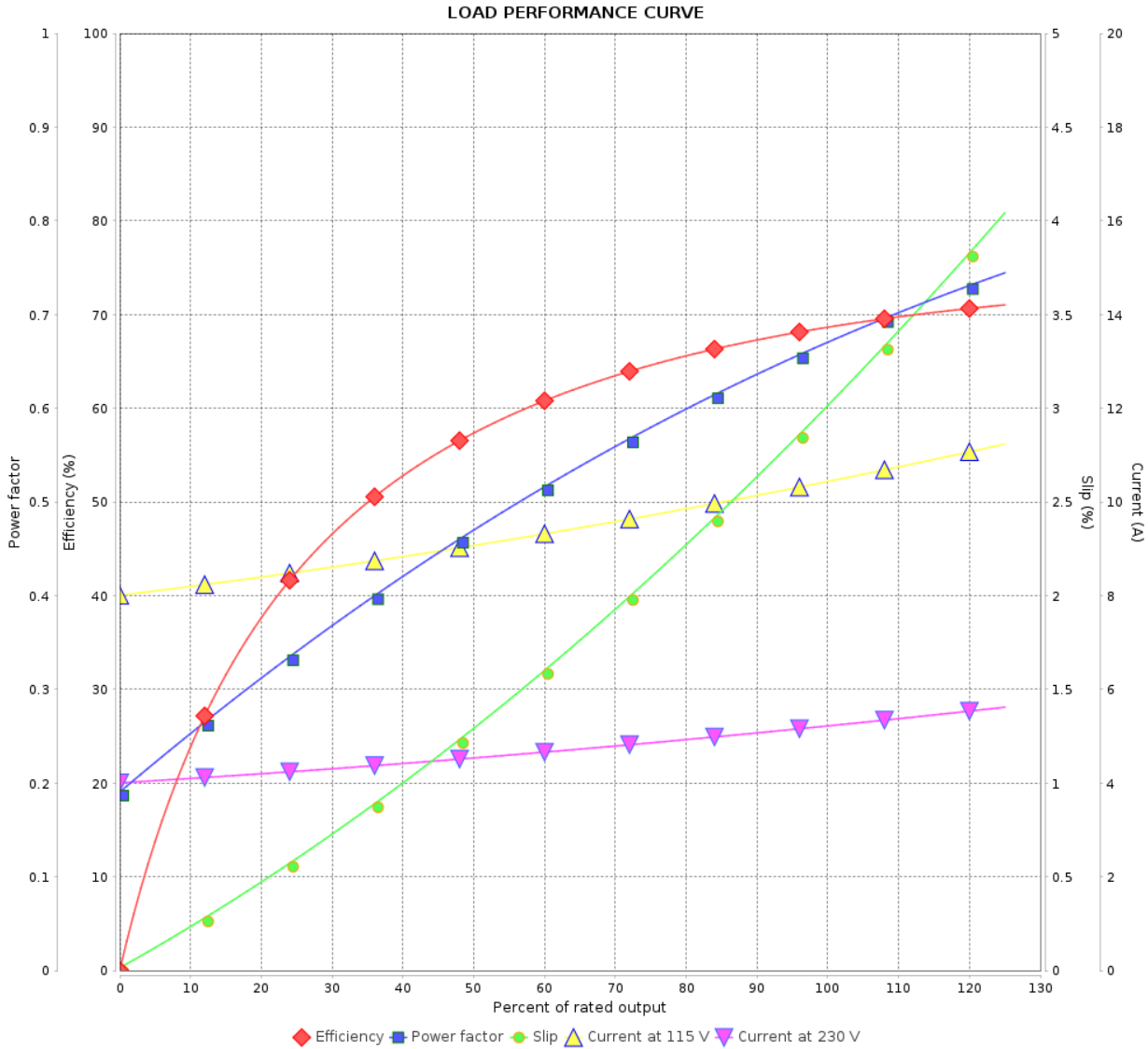
LOAD PERFORMANCE CURVE

Single Phase Induction Motor - Squirrel Cage



Customer :

Product line : Rolled Steel 00022 Single-Phase Product code : 18463442



Rev.	Changes Summary	Performed	Checked	Date
Performed by			Page 2 / 2	Revision
Checked by				
Date	11/05/2026			

1 2 3 4 5 6

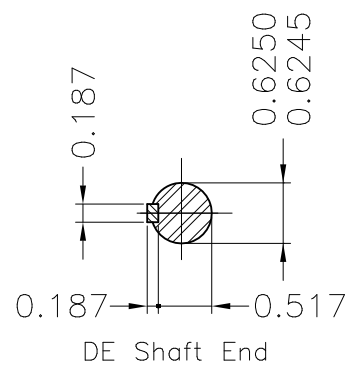
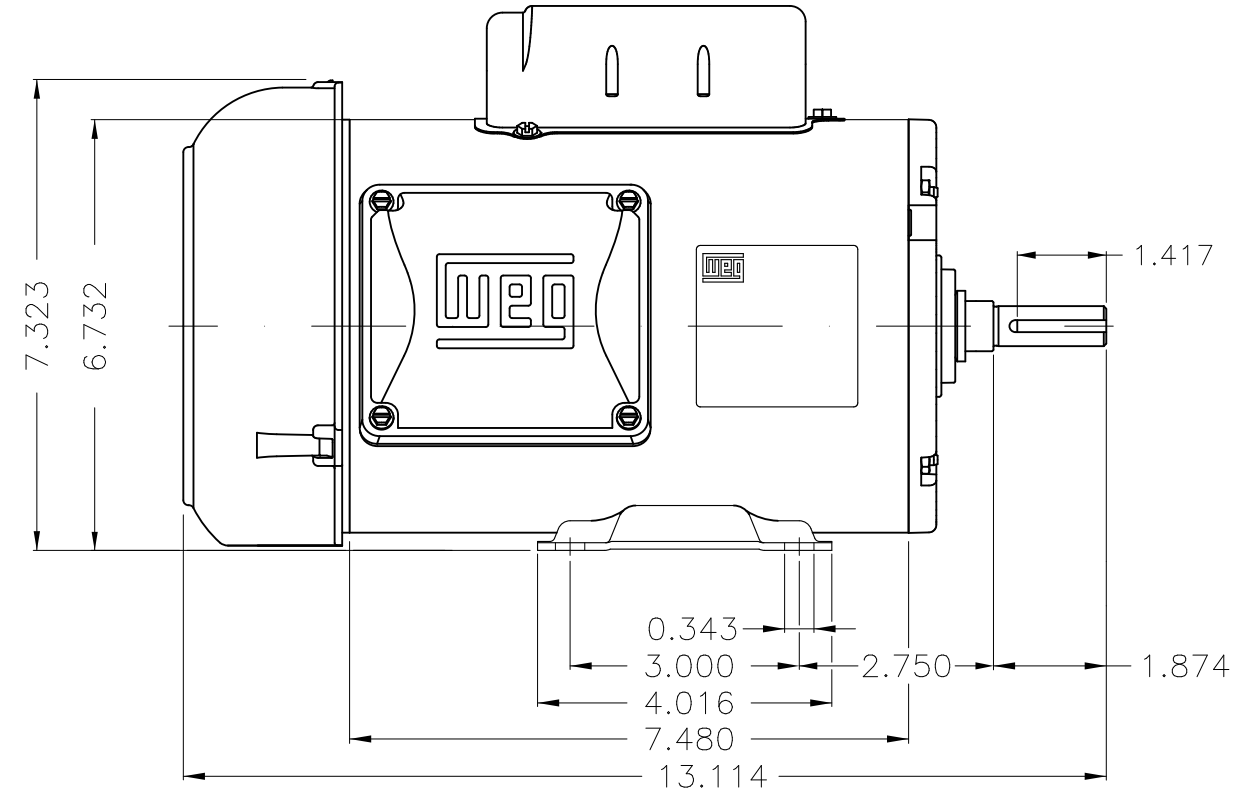
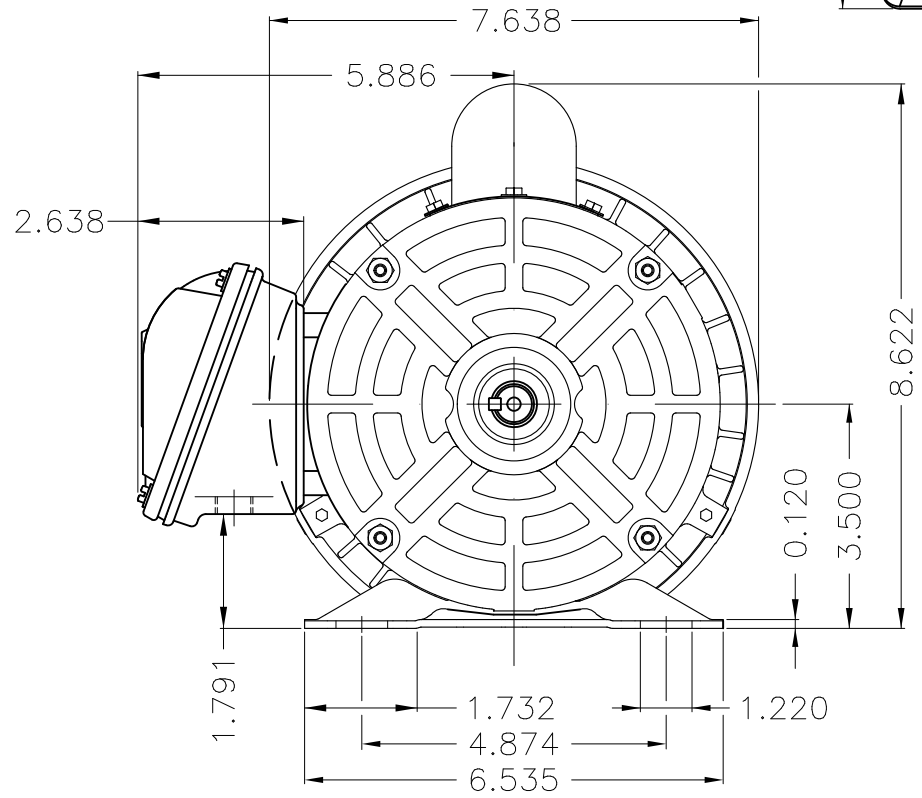
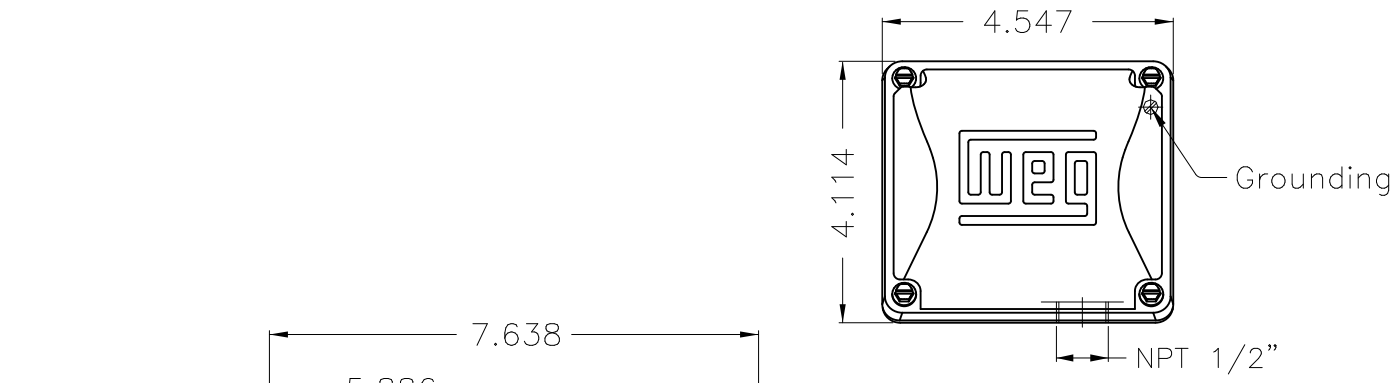
A

B

C

D

E



Dimensions in inches

Color RAL 3002									
Mounting F-1/B3R(D)									
					HYBRISUSER	00			
ECM	LOC	SUMMARY OF MODIFICATIONS			EXECUTED	CHECKED	RELEASED	DATE	VER
EXECUTED	HYBRISUSER	SINGLE PH. MOTOR ROLLED STEEL FARM DUTY			PREVIEW		WDD 00		
CHECKED		FRAME 56 IP55 TEFC			WDD		00		
RELEASED					SHEET		1 / 1		
REL. DATE	WMO	Jaragua do Sul	Product Engineering	SHEET		1 / 1			

0.75 HP 04 Poles 60 Hz

A

WEG's property. Forbidden reproduction without previous authorization.



XME A3