

DATA SHEET



Three Phase Induction Motor - Squirrel Cage

Customer :						
Product line		: W22 Brake Motor NEMA Premium Efficiency Three-Phase		Product code :		13878036
Frame	:	213/5TC		Locked rotor time	:	36s (cold) 20s (hot)
Output	:	7.5 HP (5.5 kW)		Temperature rise	:	80 K
Poles	:	4		Duty cycle	:	Cont.(S1)
Frequency	:	60 Hz		Ambient temperature	:	-20°C to +40°C
Rated voltage	:	575 V		Altitude	:	1000 m.a.s.l.
Rated current	:	7.34 A		Protection degree	:	IP55
L. R. Amperes	:	52.1 A		Cooling method	:	IC411 - TEFC
LRC	:	7.1x(Code H)		Mounting	:	F-1
No load current	:	3.36 A		Rotation ¹	:	Both (CW and CCW)
Rated speed	:	1765 rpm		Noise level ²	:	58.0 dB(A)
Slip	:	1.94 %		Starting method	:	Direct On Line
Rated torque	:	3.08 kgfm		Approx. weight ³	:	89.1 kg
Locked rotor torque	:	220 %				
Breakdown torque	:	310 %				
Insulation class	:	F				
Service factor	:	1.25				
Moment of inertia (J)	:	0.0566 kgm ²				
Design	:	B				
Output	50%	75%	100%	Foundation loads		
Efficiency (%)	89.5	91.0	91.7	Max. traction	:	132 kgf
Power Factor	0.66	0.76	0.82	Max. compression	:	221 kgf
Losses at normative operating points (speed;torque), in percentage of rated output power						
P1 (0,9;1,0)	P2 (0,5;1,0)	P3 (0,25;1,0)	P4 (0,9;0,5)	P5 (0,5;0,5)	P6 (0,5;0,25)	P7 (0,25;0,25)
8.8	7.0	6.5	4.9	3.3	2.4	1.6
		<u>Drive end</u>		<u>Non drive end</u>		
Bearing type	:	6308 ZZ		6207 ZZ		
Sealing	:	V'Ring		Lip Seal		
Lubrication interval	:	-		-		
Lubricant amount	:	-		-		
Lubricant type	:	Mobil Polyrex EM				
Notes						
This revision replaces and cancel the previous one, which must be eliminated. (1) Looking the motor from the shaft end. (2) Measured at 1m and with tolerance of +3dB(A). (3) Approximate weight subject to changes after manufacturing process. (4) At 100% of full load.				These are average values based on tests with sinusoidal power supply, subject to the tolerances stipulated in NEMA MG-1.		
Rev.	Changes Summary			Performed	Checked	Date
Performed by						
Checked by					Page	Revision
Date	02/01/2025				1 / 3	

DATA SHEET

Three Phase Induction Motor - Squirrel Cage



Customer : _____

Brake information

Voltage: 525-575 V
Brake Torque: 8.15 kgfm

Rev.	Changes Summary	Performed	Checked	Date
Performed by				
Checked by			Page	Revision
Date	02/01/2025		2 / 3	

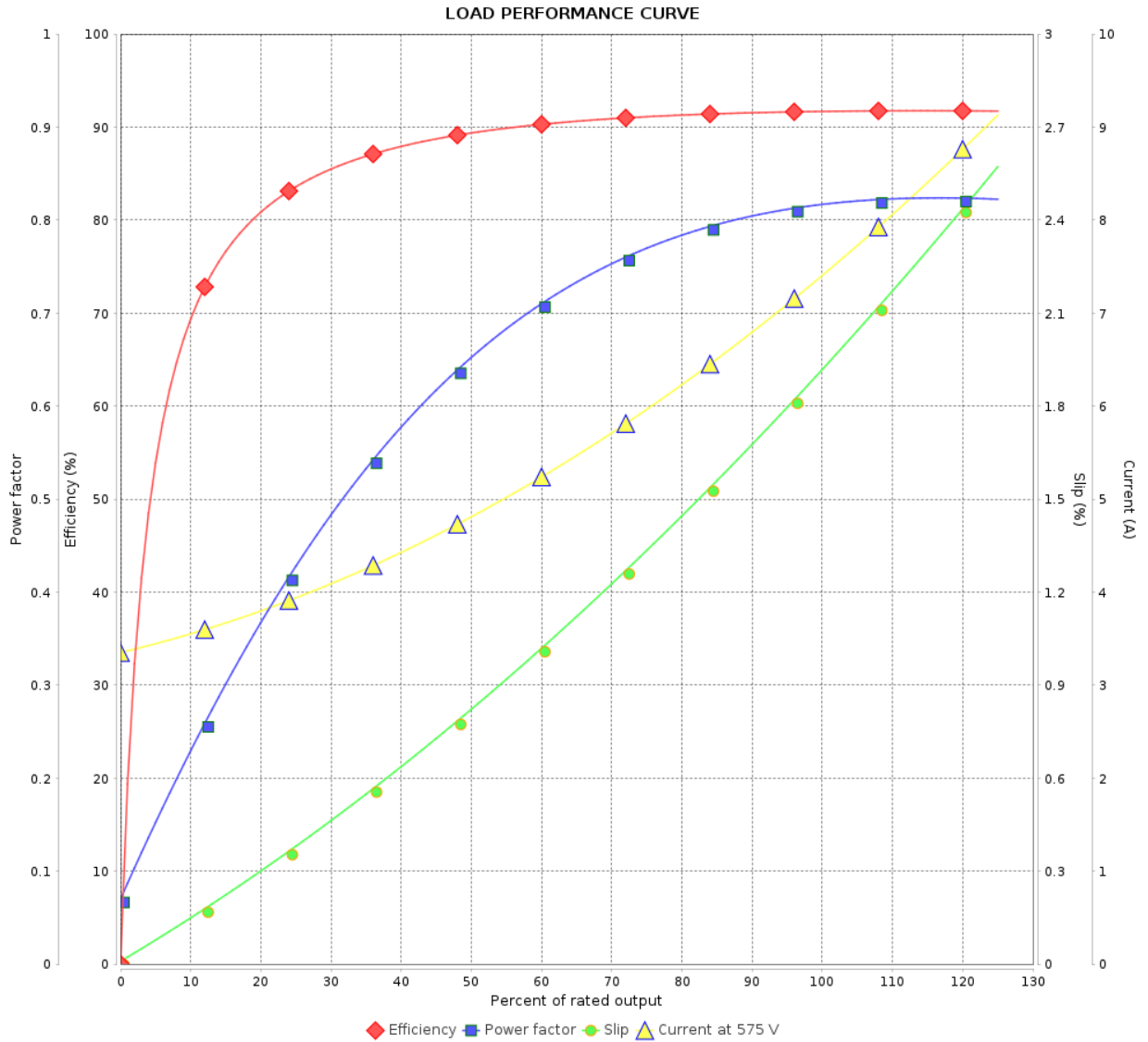
LOAD PERFORMANCE CURVE

Three Phase Induction Motor - Squirrel Cage



Customer :

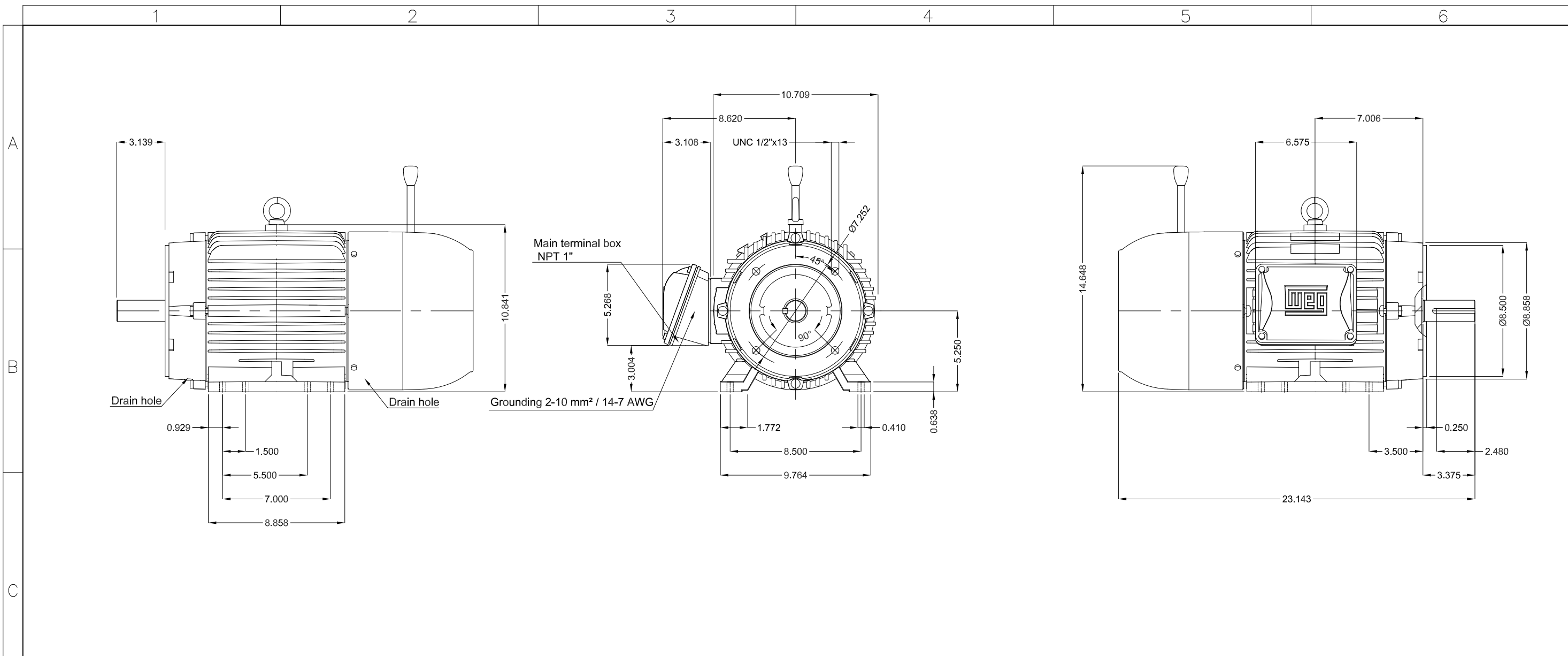
Product line : W22 Brake Motor NEMA Premium Efficiency Three-Phase Product code : 13878036



Performance : 575 V 60 Hz 4P

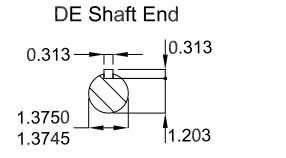
Rated current	: 7.34 A	Moment of inertia (J)	: 0.0566 kgm ²
LRC	: 7.1	Duty cycle	: Cont.(S1)
Rated torque	: 3.08 kgfm	Insulation class	: F
Locked rotor torque	: 220 %	Service factor	: 1.25
Breakdown torque	: 310 %	Temperature rise	: 80 K
Rated speed	: 1765 rpm	Design	: B

Rev.	Changes Summary	Performed	Checked	Date
Performed by			Page 3 / 3	Revision
Checked by				
Date	02/01/2025			



D										
	7.5 HP 04 Poles 60 Hz A									
E										

Brake voltage 525-575 V
 Break size 16 (80 Nm)
 Color RAL 5009
 Painting plan 207A
 Mounting NEMA F-1
 Mounting B34R(D)



ECM	LOC	SUMMARY OF MODIFICATIONS				HYBRISUSER	00
EXECUTED	HYBRISUSER	THREE PH. MOTOR W22 BRAKE MOTOR NEMA PREM. EFF. FRAME 213/5TC IP55 TEFC				EXECUTED	00
CHECKED						CHECKED	
RELEASED						RELEASED	
REL. DATE						DATE	

PREVIEW
 WDD | 00
 SHEET /