

DATA SHEET



Three Phase Induction Motor - Squirrel Cage

Customer :						
Product line		: W40 JP Pump NEMA Premium Efficiency Three-Phase		Product code : 15860068		
Frame	: 284/6JP	Locked rotor time	: 28s (cold) 16s (hot)			
Output	: 15 HP (11 kW)	Temperature rise	: 80 K			
Poles	: 6	Duty cycle	: Cont.(S1)			
Frequency	: 60 Hz	Ambient temperature	: -20°C to +40°C			
Rated voltage	: 575 V	Altitude	: 1000 m.a.s.l.			
Rated current	: 14.7 A	Protection degree	: IP23			
L. R. Amperes	: 92.7 A	Cooling method	: IC01 - ODP			
LRC	: 6.3x(Code G)	Mounting	: F-1			
No load current	: 6.24 A	Rotation ¹	: Both (CW and CCW)			
Rated speed	: 1180 rpm	Noise level ²	: 59.0 dB(A)			
Slip	: 1.67 %	Starting method	: Direct On Line			
Rated torque	: 9.23 kgfm	Approx. weight ³	: 155 kg			
Locked rotor torque	: 260 %					
Breakdown torque	: 260 %					
Insulation class	: F					
Service factor	: 1.25					
Moment of inertia (J)	: 0.2025 kgm ²					
Design	: B					
Output	50%	75%	100%	Foundation loads		
Efficiency (%)	91.0	91.7	91.7	Max. traction		
Power Factor	0.67	0.77	0.82	Max. compression		
		<u>Drive end</u>		<u>Non drive end</u>		
Bearing type	:	6311 Z C3		6211 Z C3		
Sealing	:	Without Bearing Seal		Without Bearing Seal		
Lubrication interval	:	20000 h		20000 h		
Lubricant amount	:	18 g		11 g		
Lubricant type	:	Mobil Polyrex EM				
Notes						
This revision replaces and cancel the previous one, which must be eliminated. (1) Looking the motor from the shaft end. (2) Measured at 1m and with tolerance of +3dB(A). (3) Approximate weight subject to changes after manufacturing process. (4) At 100% of full load.			These are average values based on tests with sinusoidal power supply, subject to the tolerances stipulated in NEMA MG-1.			
Rev.	Changes Summary			Performed	Checked	Date
Performed by						
Checked by					Page	Revision
Date	30/10/2024				1 / 2	

LOAD PERFORMANCE CURVE

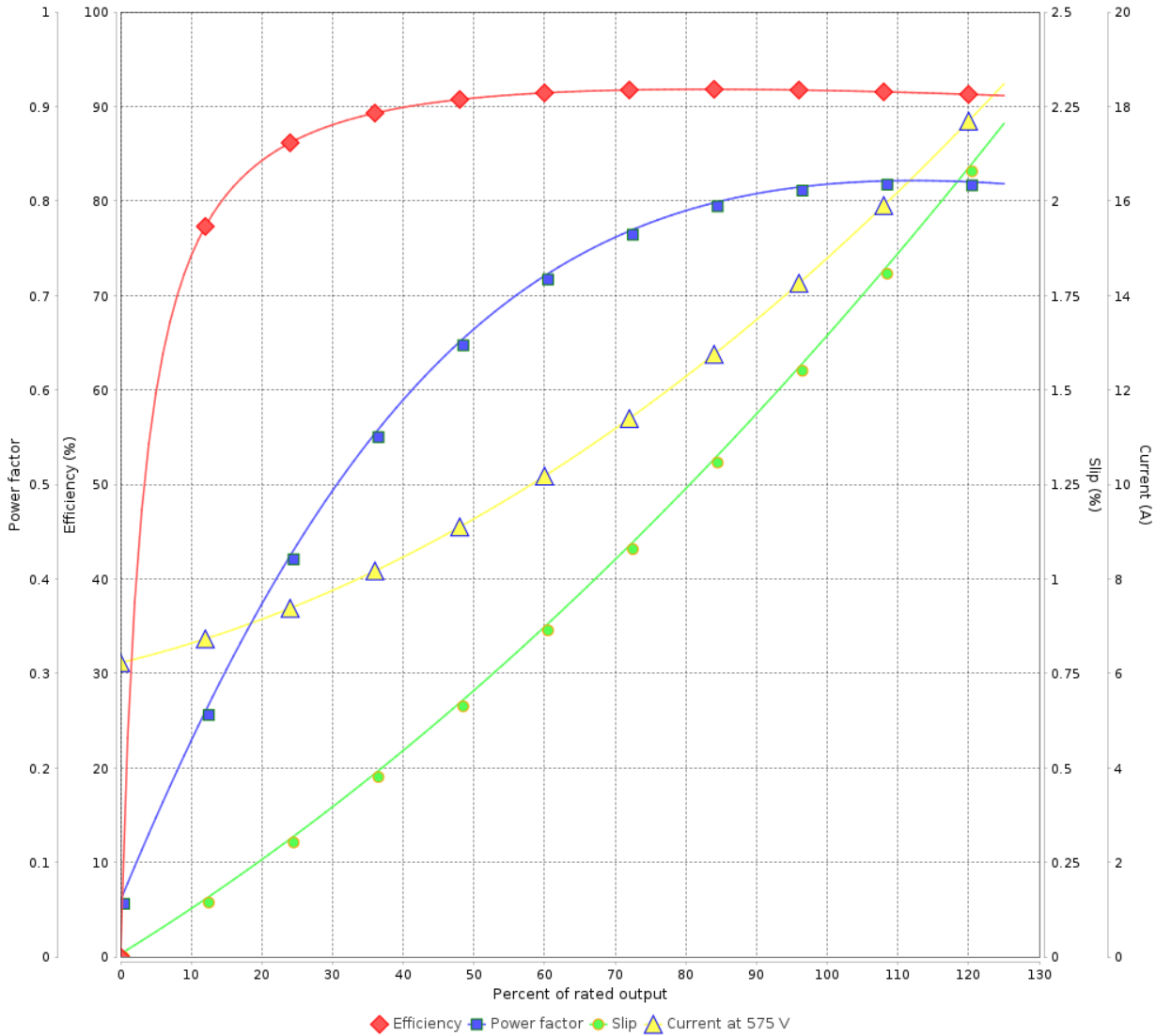
Three Phase Induction Motor - Squirrel Cage



Customer :

Product line : W40 JP Pump NEMA Premium Efficiency Three-Phase Product code : 15860068

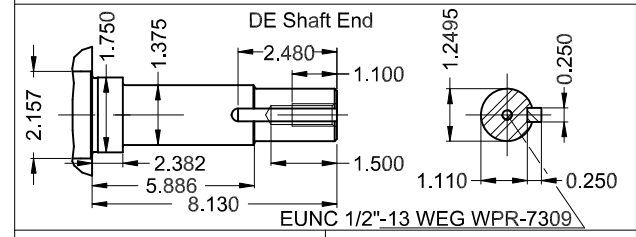
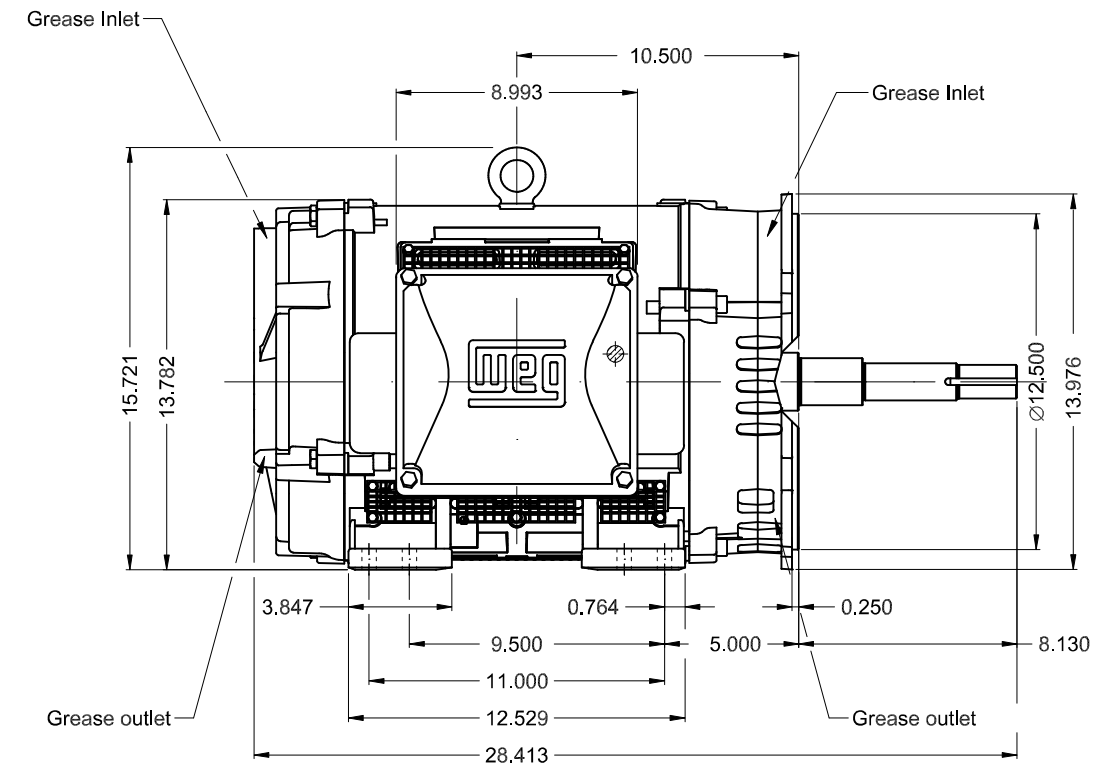
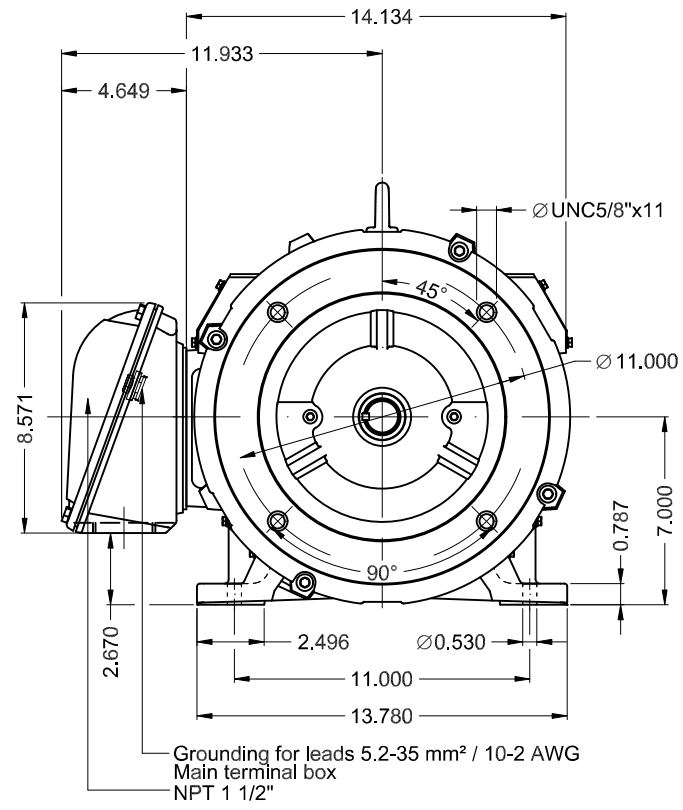
LOAD PERFORMANCE CURVE



Performance : 575 V 60 Hz 6P

Rated current	: 14.7 A	Moment of inertia (J)	: 0.2025 kgm ²
LRC	: 6.3	Duty cycle	: Cont.(S1)
Rated torque	: 9.23 kgfm	Insulation class	: F
Locked rotor torque	: 260 %	Service factor	: 1.25
Breakdown torque	: 260 %	Temperature rise	: 80 K
Rated speed	: 1180 rpm	Design	: B

Rev.	Changes Summary	Performed	Checked	Date
Performed by			Page 2 / 2	Revision
Checked by				
Date	30/10/2024			



Color RAL 5009
Painting plan 203A
Mounting NEMA F-1
Mounting B34D

15 HP 06 Poles 60 Hz										A
										1:7
										00
ECM	LOC	SUMMARY OF MODIFICATIONS			EXECUTED	CHECKED	RELEASED	DATE	VER	
EXECUTED	HYBRISUSER	THREE PH. MOTOR W40 PUMP JP NEMA PREM. EFF.								
CHECKED		FRAME 284/6JP IP23 ODP								
RELEASED										
REL. DATE		WMO	Jaragua do Sul	Product Engineering						

PREVIEW
WDD 00
SHEET 1 / 1

