

DATA SHEET

Single Phase Induction Motor - Squirrel Cage



Customer :				
Product line : Single-Phase		Product code : 15764428		
Frame : 143/5T Insulation class : F Duty cycle : Cont.(S1) Ambient temperature : -20°C to +40°C Altitude : 1000 m.a.s.l. Protection degree : IP55 Design : L		Cooling method : IC411 - TEFC Mounting : F-1 Rotation ¹ : Both (CW and CCW) Starting method : Direct On Line Approx. weight ³ : 22.6 kg Moment of inertia (J) : 0.0040 kgm²		
Output [HP]	3			
Poles	2			
Frequency [Hz]	60			
Rated voltage [V]	115/208-230			
Rated current [A]	25.4/14.0-12.7			
L. R. Amperes [A]	203/112-102			
LRC [A]	8.0x(Code J)			
No load current [A]	8.00/3.45-4.00			
Rated speed [RPM]	3490			
Slip [%]	3.06			
Rated torque [kgfm]	0.624			
Locked rotor torque [%]	210			
Breakdown torque [%]	250			
Service factor				
Temperature rise	80 K			
Locked rotor time	10s (cold) 6s (hot)			
Noise level ²	68.0 dB(A)			
Efficiency (%)	25%			
	50%	76.0		
	75%	79.0		
	100%	80.0		
Power Factor	25%			
	50%	0.86		
	75%	0.92		
	100%	0.94		
Bearing type : Drive end 6205 ZZ Non drive end 6203 ZZ Sealing : V'Ring Without Bearing Seal Lubrication interval : - - Lubricant amount : - - Lubricant type : Mobil Polyrex EM		Foundation loads Max. traction : 33 kgf Max. compression : 55 kgf		
Notes				
This revision replaces and cancel the previous one, which must be eliminated. (1) Looking the motor from the shaft end. (2) Measured at 1m and with tolerance of +3dB(A). (3) Approximate weight subject to changes after manufacturing process. (4) At 100% of full load.		These are average values based on tests with sinusoidal power supply, subject to the tolerances stipulated in NEMA MG-1.		
Rev.	Changes Summary		Performed	Checked
Performed by			Page 1 / 2	Revision
Checked by				
Date	17/05/2022			

LOAD PERFORMANCE CURVE

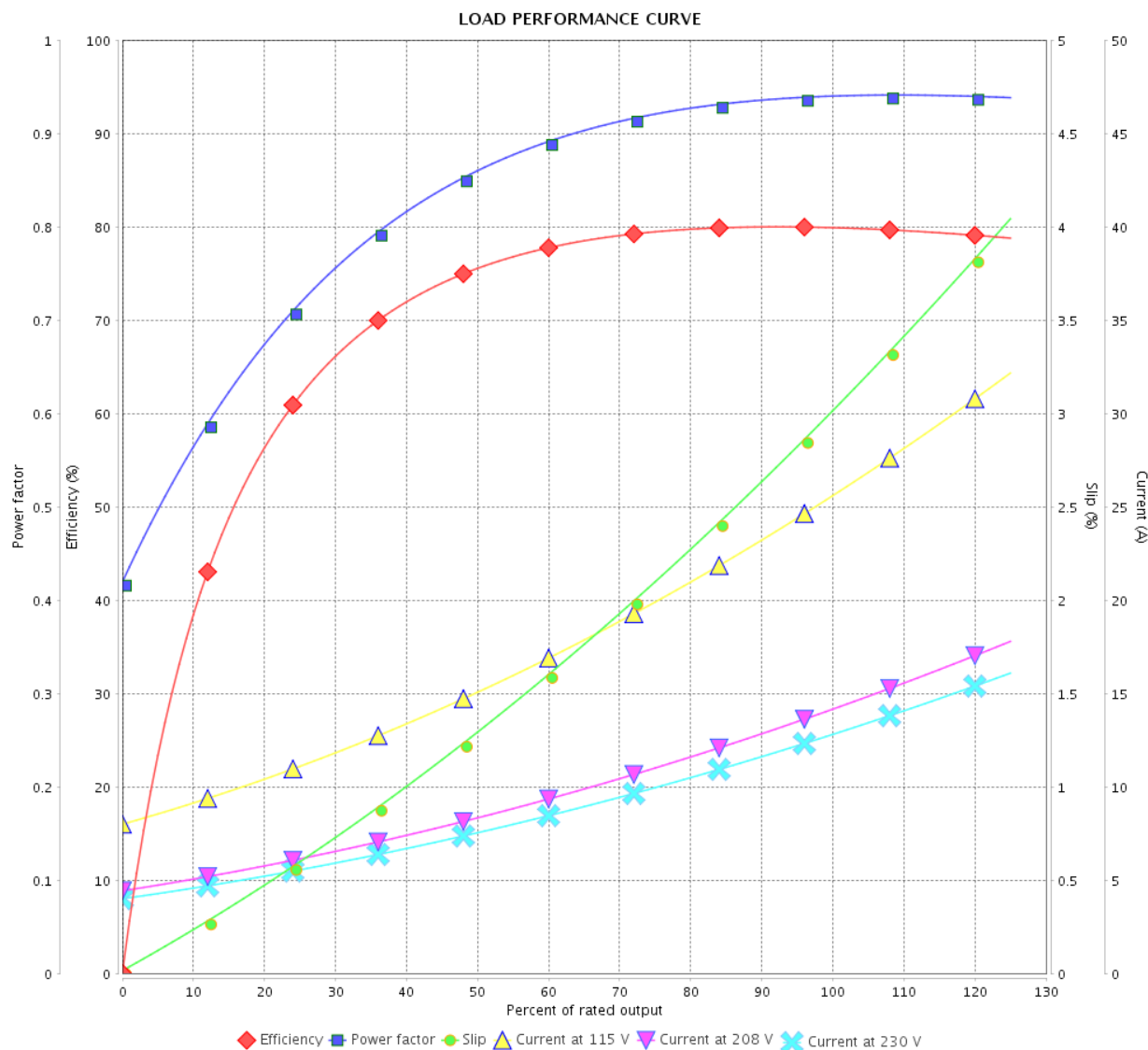
Single Phase Induction Motor - Squirrel Cage



Customer :

Product line : Single-Phase

Product code : 15764428

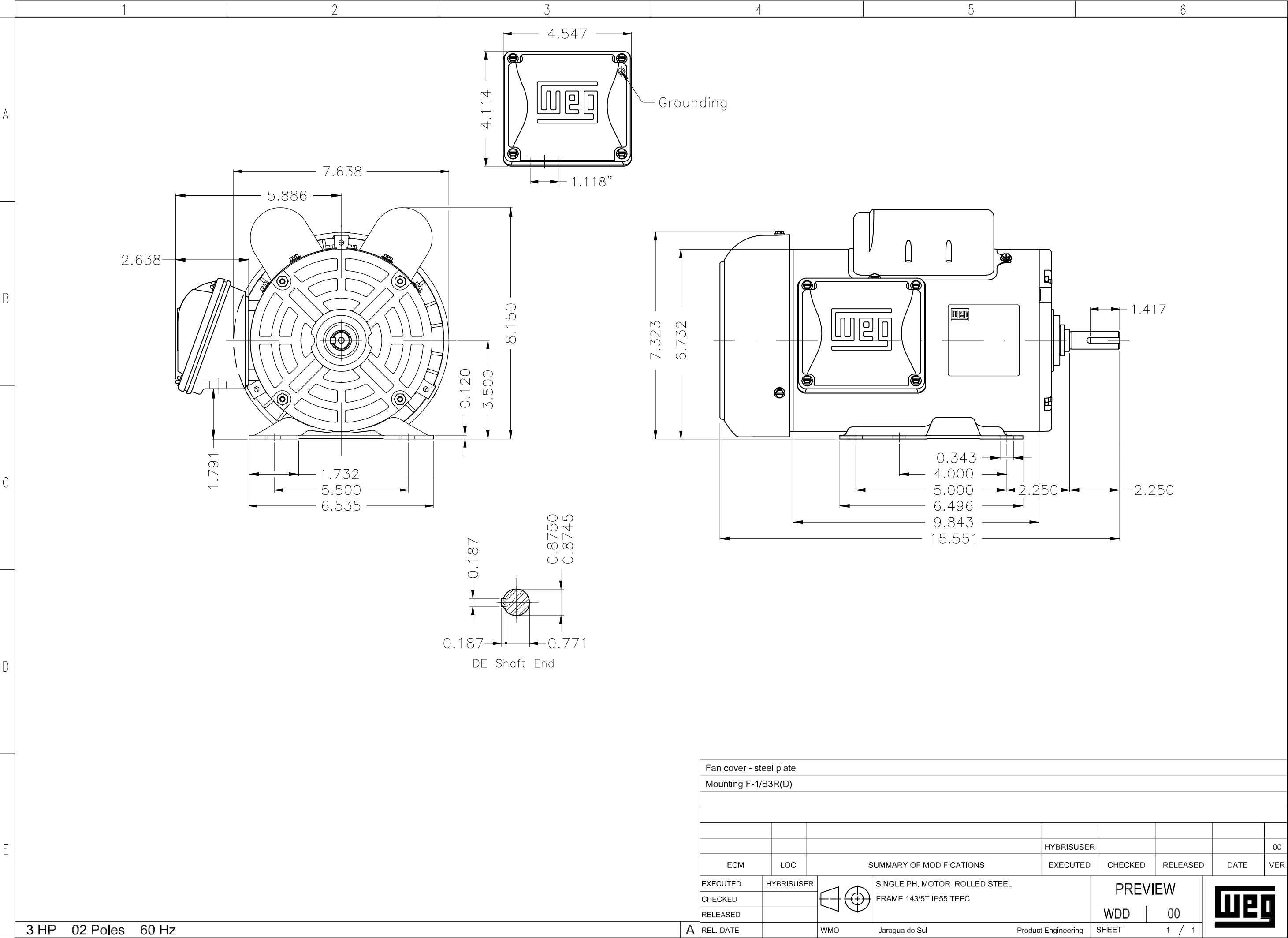


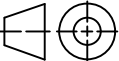

Performance : 115/208-230 V 60 Hz 2P

Rated current : 25.4/14.0-12.7 A
 LRC : 8.0
 Rated torque : 0.624 kgfm
 Locked rotor torque : 210 %
 Breakdown torque : 250 %
 Rated speed : 3490 rpm

Moment of inertia (J) : 0.0040 kgm²
 Duty cycle : Cont.(S1)
 Insulation class : F
 Service factor :
 Temperature rise : 80 K
 Design : L

Rev.	Changes Summary		Performed	Checked	Date
Performed by				Page 2 / 2	Revision
Checked by					
Date	17/05/2022				



Fan cover - steel plate									
Mounting F-1/B3R(D)									
						HYBRISUSER			00
ECM	LOC	SUMMARY OF MODIFICATIONS				EXECUTED	CHECKED	RELEASED	DATE VER
EXECUTED	HYBRISUSER	 SINGLE PH. MOTOR ROLLED STEEL FRAME 143/5T IP55 TEFC				PREVIEW WDD 00			
CHECKED									
RELEASED									
REL. DATE		WMO	Jaragua do Sul	Product Engineering	SHEET	1 / 1			