

DATA SHEET

Three Phase Induction Motor - Squirrel Cage



Customer :

Product line : General High Efficiency Three-Phase Product code : 11074488

Frame	: 182TC	Cooling method	: IC01 - ODP
Insulation class	: F	Mounting	: F-1
Duty cycle	: Cont.(S1)	Rotation ¹	: Both (CW and CCW)
Ambient temperature	: -20°C to +40°C	Starting method	: Direct On Line
Altitude	: 1000 m.a.s.l.	Approx. weight ³	: 27.8 kg
Protection degree	: IP21	Moment of inertia (J)	: 0.0054 kgm ²
Design	: B		

Output [HP]	5	5	5	5
Poles	2	2	2	2
Frequency [Hz]	60	50	50	50
Rated voltage [V]	230/460	380	400	415
Rated current [A]	12.5/6.24	7.74	7.39	7.30
L. R. Amperes [A]	88.6/44.3	43.3	45.8	48.2
LRC [A]	7.1x(Code H)	5.6x(Code G)	6.2x(Code H)	6.6x(Code H)
No load current [A]	5.60/2.80	2.70	3.30	3.80
Rated speed [RPM]	3510	2875	2890	2900
Slip [%]	2.50	4.17	3.67	3.33
Rated torque [kgfm]	1.03	1.26	1.26	1.25
Locked rotor torque [%]	180	150	160	180
Breakdown torque [%]	290	210	240	260
Service factor	1.15	1.00	1.00	1.00
Temperature rise	105 K	105 K	105 K	105 K
Locked rotor time	21s (cold) 12s (hot)	28s (cold) 16s (hot)	25s (cold) 14s (hot)	21s (cold) 12s (hot)
Noise level ²	64.0 dB(A)			
Efficiency (%)	25%			
	50%	85.5	82.5	82.5
	75%	86.5	84.0	84.0
	100%	86.5	82.5	84.0
Power Factor	25%			
	50%	0.70	0.76	0.71
	75%	0.80	0.85	0.82
	100%	0.86	0.88	0.86

Bearing type	: <u>Drive end</u> 6206 ZZ	<u>Non drive end</u> 6205 ZZ	Foundation loads	Max. traction : 54 kgf
	: Without	Without		
Sealing	Bearing Seal Bearing Seal			
Lubrication interval	:			
Lubricant amount	:			
Lubricant type	: Mobil Polyrex EM			

Notes
USABLE @208V 13.6A SF 1.15 SFA 15.7A

This revision replaces and cancel the previous one, which must be eliminated.
 (1) Looking the motor from the shaft end.
 (2) Measured at 1m and with tolerance of +3dB(A).
 (3) Approximate weight subject to changes after manufacturing process.
 (4) At 100% of full load.

These are average values based on tests with sinusoidal power supply, subject to the tolerances stipulated in NEMA MG-1.

Rev.	Changes Summary	Performed	Checked	Date
Performed by			Page	Revision
Checked by				
Date				

LOAD PERFORMANCE CURVE

Three Phase Induction Motor - Squirrel Cage

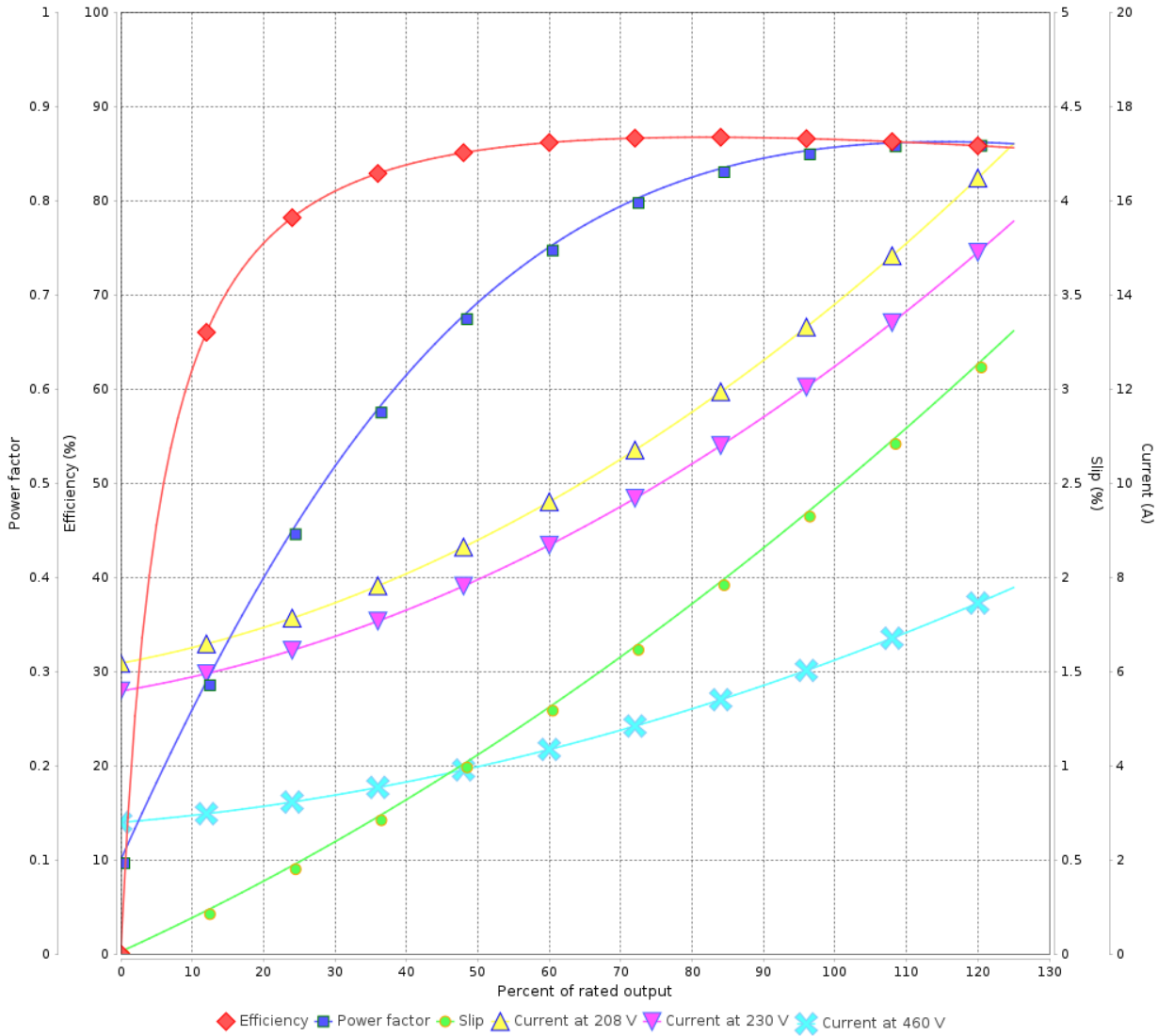


Customer :

Product line : General High Efficiency Three-Phase

Product code : 11074488

LOAD PERFORMANCE CURVE



Performance : 230/460 V 60 Hz 2P

Rated current : 12.5/6.24 A
 LRC : 7.1
 Rated torque : 1.03 kgfm
 Locked rotor torque : 180 %
 Breakdown torque : 290 %
 Rated speed : 3510 rpm

Moment of inertia (J) : 0.0054 kgm²
 Duty cycle : Cont.(S1)
 Insulation class : F
 Service factor : 1.15
 Temperature rise : 105 K
 Design : B

Rev.	Changes Summary	Performed	Checked	Date
Performed by			Page 2 / 5	Revision
Checked by				
Date	02/04/2025			

LOAD PERFORMANCE CURVE

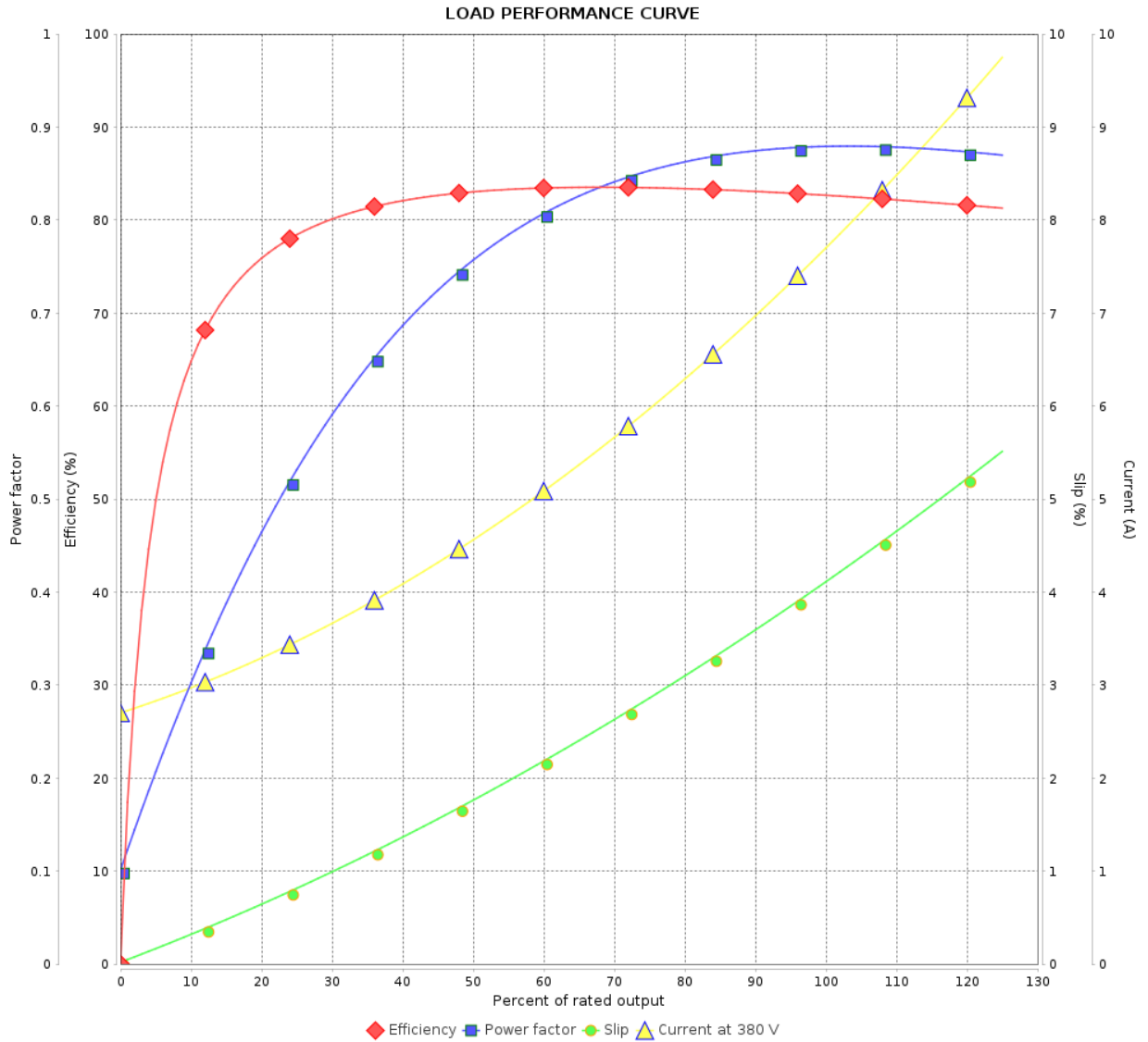
Three Phase Induction Motor - Squirrel Cage



Customer :

Product line : General High Efficiency Three-Phase

Product code : 11074488



Performance : 380 V 50 Hz 2P

Rated current : 7.74 A
 LRC : 5.6
 Rated torque : 1.26 kgfm
 Locked rotor torque : 150 %
 Breakdown torque : 210 %
 Rated speed : 2875 rpm

Moment of inertia (J) : 0.0054 kgm²
 Duty cycle : Cont.(S1)
 Insulation class : F
 Service factor : 1.00
 Temperature rise : 105 K
 Design : B

Rev.	Changes Summary	Performed	Checked	Date
Performed by		Page		Revision
Checked by		3 / 5		
Date		02/04/2025		

LOAD PERFORMANCE CURVE

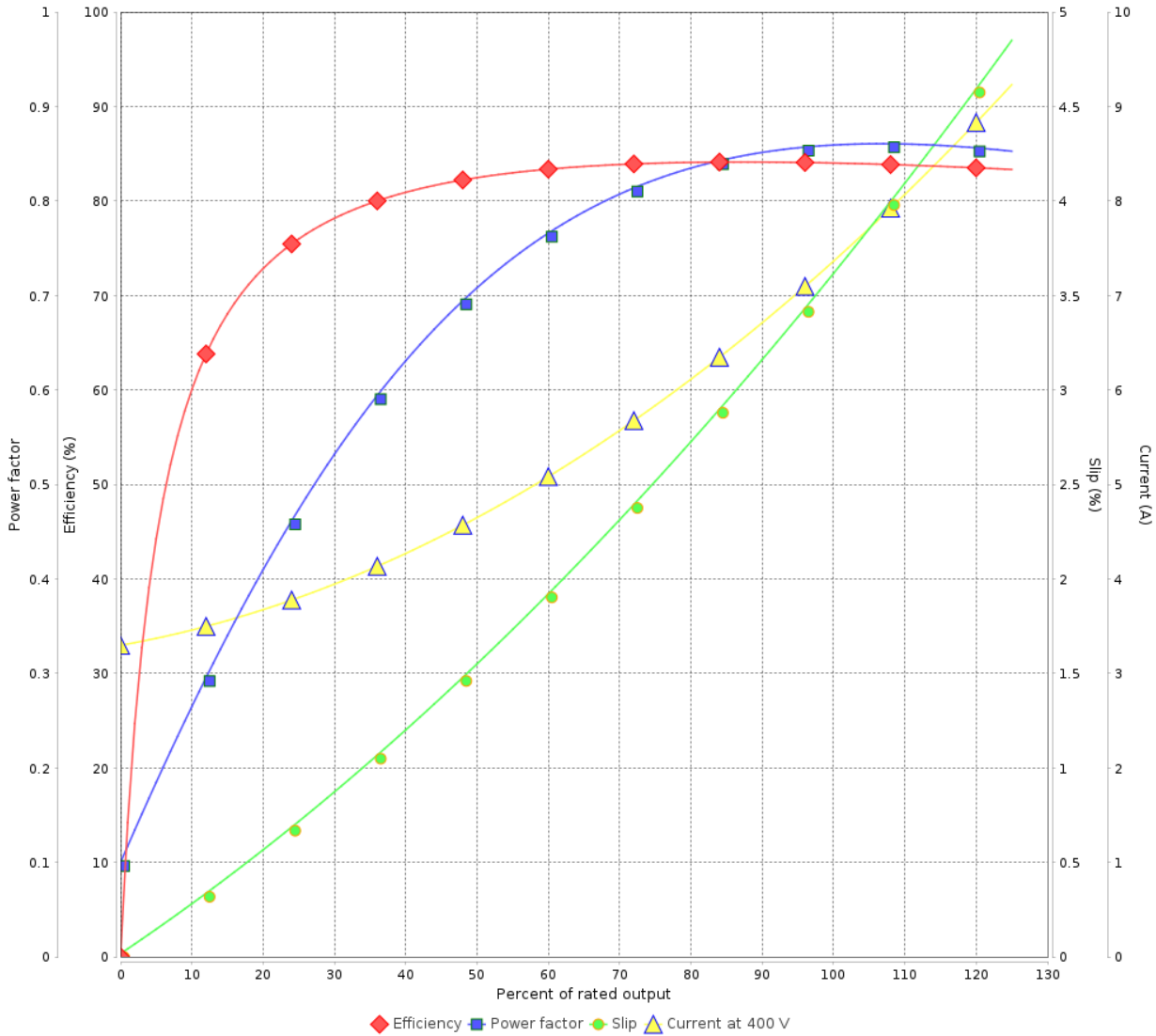
Three Phase Induction Motor - Squirrel Cage



Customer :

Product line : General High Efficiency Three-Phase Product code : 11074488

LOAD PERFORMANCE CURVE



Performance : 400 V 50 Hz 2P IE1

Rated current	: 7.39 A	Moment of inertia (J)	: 0.0054 kgm ²
LRC	: 6.2	Duty cycle	: Cont.(S1)
Rated torque	: 1.26 kgfm	Insulation class	: F
Locked rotor torque	: 160 %	Service factor	: 1.00
Breakdown torque	: 240 %	Temperature rise	: 105 K
Rated speed	: 2890 rpm	Design	: B

Rev.	Changes Summary	Performed	Checked	Date
Performed by			Page 4 / 5	Revision
Checked by				
Date	02/04/2025			

LOAD PERFORMANCE CURVE

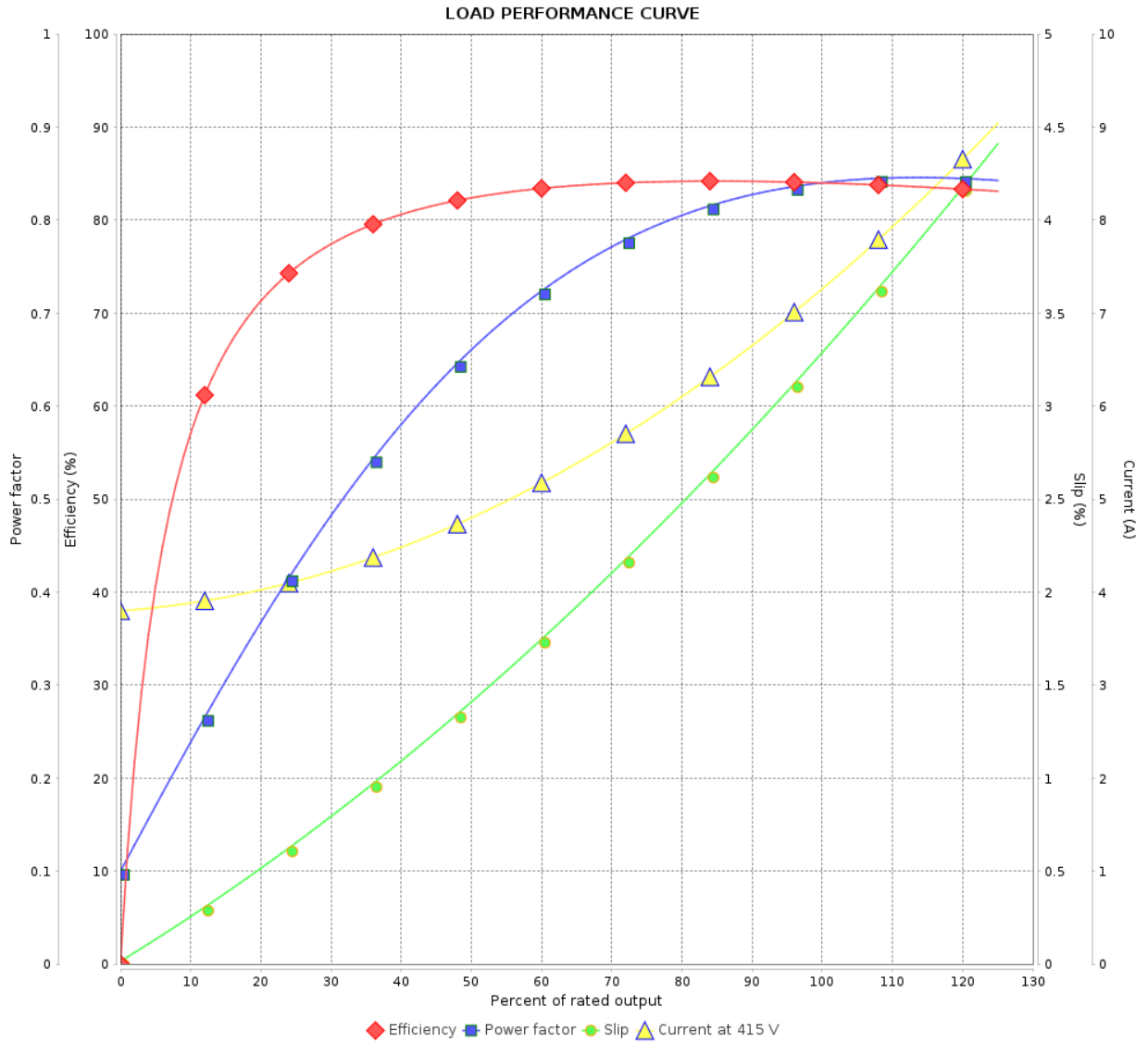
Three Phase Induction Motor - Squirrel Cage



Customer :

Product line : General High Efficiency Three-Phase

Product code : 11074488

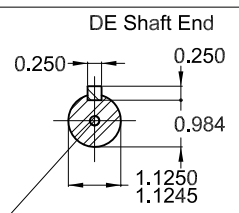
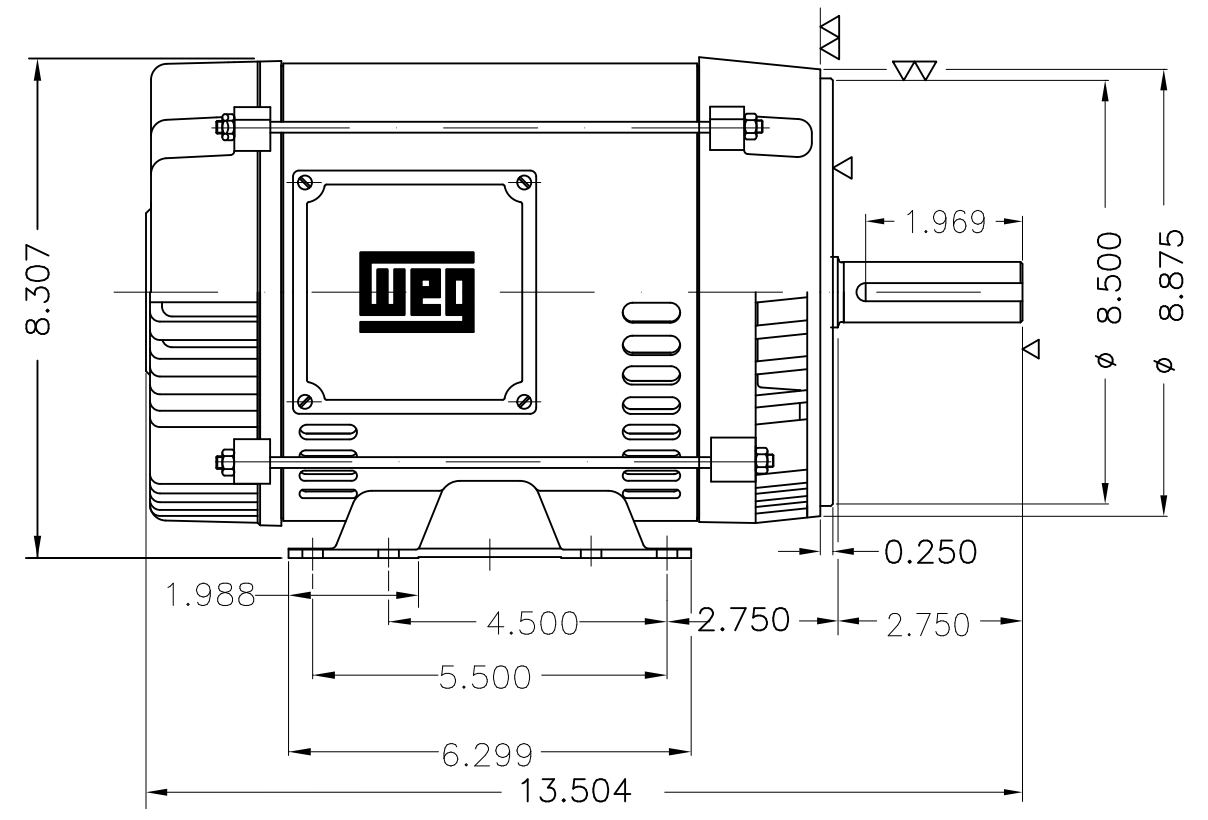
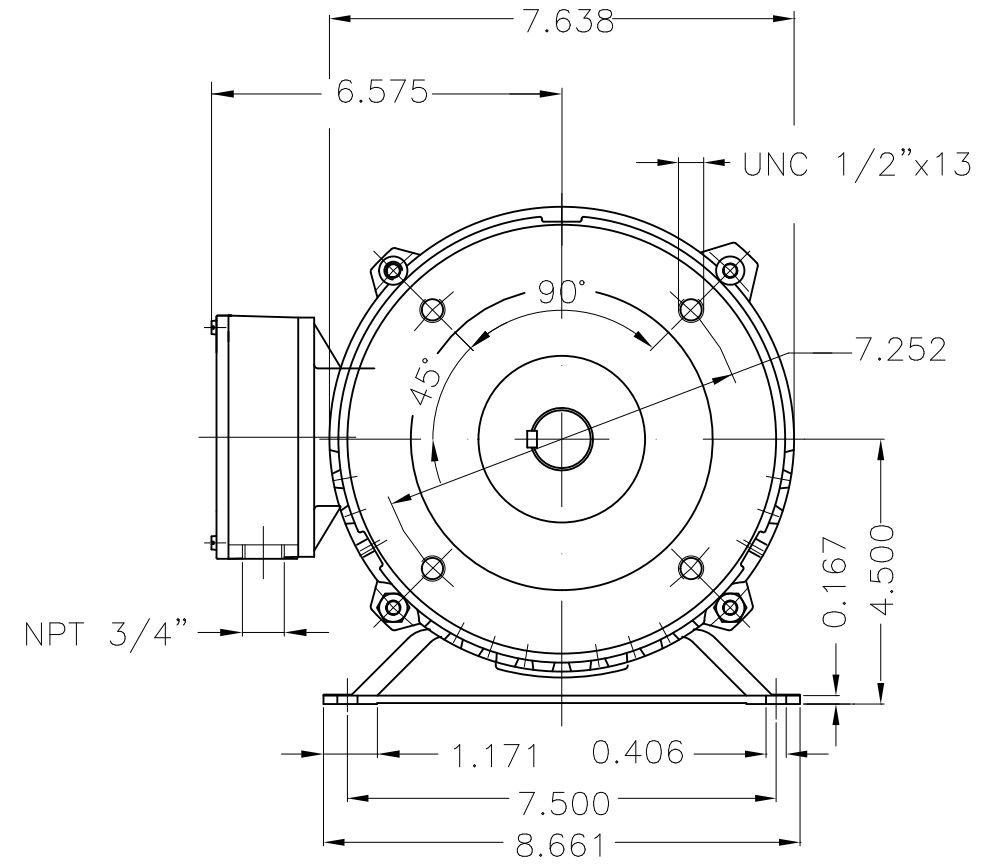


Performance : 415 V 50 Hz 2P IE1

Rated current : 7.30 A
 LRC : 6.6
 Rated torque : 1.25 kgfm
 Locked rotor torque : 180 %
 Breakdown torque : 260 %
 Rated speed : 2900 rpm

Moment of inertia (J) : 0.0054 kgm²
 Duty cycle : Cont.(S1)
 Insulation class : F
 Service factor : 1.00
 Temperature rise : 105 K
 Design : B

Rev.	Changes Summary	Performed	Checked	Date
Performed by		Page		Revision
Checked by		5 / 5		
Date		02/04/2025		



Without switch off thermal protection
 Bearing cap
 Color RAL 5009
 Painting plan 207A
 Mounting B34R(D)

5 HP 02 Poles 60 Hz A

						HYBRISUSER						00	
ECM	LOC	SUMMARY OF MODIFICATIONS				EXECUTED	CHECKED	RELEASED	DATE	VER			
EXECUTED	HYBRISUSER	THREE PH. MOTOR GENERAL HIGH EFF.										PREVIEW	
CHECKED		FRAME 182TC IP21 ODP										WDD 00	
RELEASED												SHEET 1 / 1	
REL. DATE		WMO Jaragua do Sul		Product Engineering									