

# DATA SHEET



## Three Phase Induction Motor - Squirrel Cage

Customer :						
Product line		: W21 In Line Extra Thrust NEMA Premium Efficiency Three-Phase		Product code : 15524329		
Frame	: 215LP		Locked rotor time	: 270s (cold) 150s (hot)		
Output	: 10 HP (7.5 kW)		Temperature rise	: 80 K		
Poles	: 2		Duty cycle	: Cont.(S1)		
Frequency	: 60 Hz		Ambient temperature	: -20°C to +40°C		
Rated voltage	: 208-230/460 V		Altitude	: 1000 m.a.s.l.		
Rated current	: 25.9-23.5/11.7 A		Protection degree	: IP55		
L. R. Amperes	: 179-162/80.7 A		Cooling method	: IC411 - TEFC		
LRC	: 6.9x(Code H)		Mounting	: W-6		
No load current	: 6.50-7.60/3.80 A		Rotation <sup>1</sup>	: Both (CW and CCW)		
Rated speed	: 3525 rpm		Noise level <sup>2</sup>	: 72.0 dB(A)		
Slip	: 2.08 %		Starting method	: Direct On Line		
Rated torque	: 2.06 kgfm		Approx. weight <sup>3</sup>	: 110 kg		
Locked rotor torque	: 210 %					
Breakdown torque	: 280 %					
Insulation class	: F					
Service factor	: 1.15					
Moment of inertia (J)	: 0.0232 kgm <sup>2</sup>					
Design	: B					
Output	25%	50%	75%	100%	Foundation loads	
Efficiency (%)	0.000	88.5	90.2	90.2	Max. traction	
Power Factor	0.00	0.79	0.87	0.89	Max. compression	
			<u>Drive end</u>		<u>Non drive end</u>	
Bearing type	:	6309			7306BECB	
Sealing	:	Oil Seal			Lip Seal	
Lubrication interval	:	7898 h			8437 h	
Lubricant amount	:	13 g			7 g	
Lubricant type	:	Mobil Polyrex EM				
Notes						
This revision replaces and cancel the previous one, which must be eliminated. (1) Looking the motor from the shaft end. (2) Measured at 1m and with tolerance of +3dB(A). (3) Approximate weight subject to changes after manufacturing process. (4) At 100% of full load.			These are average values based on tests with sinusoidal power supply, subject to the tolerances stipulated in NEMA MG-1.			
Rev.	Changes Summary			Performed	Checked	Date
Performed by						
Checked by					Page	Revision
Date	30/10/2024				1 / 2	

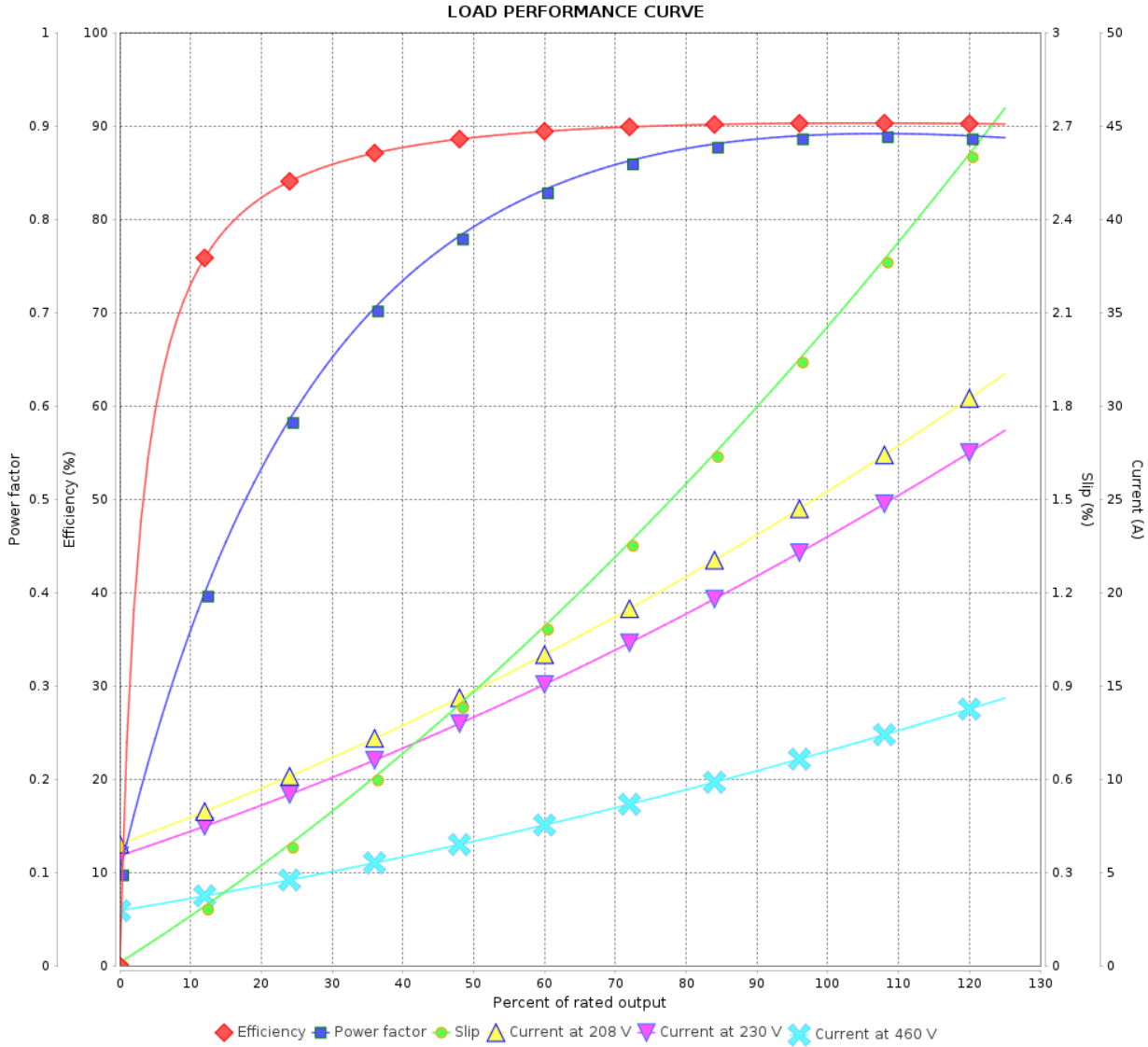
# LOAD PERFORMANCE CURVE

## Three Phase Induction Motor - Squirrel Cage



Customer :

Product line : W21 In Line Extra Thrust NEMA Premium Efficiency Three-Phase      Product code : 15524329



Performance : 208-230/460 V 60 Hz 2P

Rated current	: 25.9-23.5/11.7 A	Moment of inertia (J)	: 0.0232 kgm <sup>2</sup>
LRC	: 6.9	Duty cycle	: Cont.(S1)
Rated torque	: 2.06 kgfm	Insulation class	: F
Locked rotor torque	: 210 %	Service factor	: 1.15
Breakdown torque	: 280 %	Temperature rise	: 80 K
Rated speed	: 3525 rpm	Design	: B

Rev.	Changes Summary	Performed	Checked	Date
Performed by			Page	Revision
Checked by			2 / 2	
Date	30/10/2024			

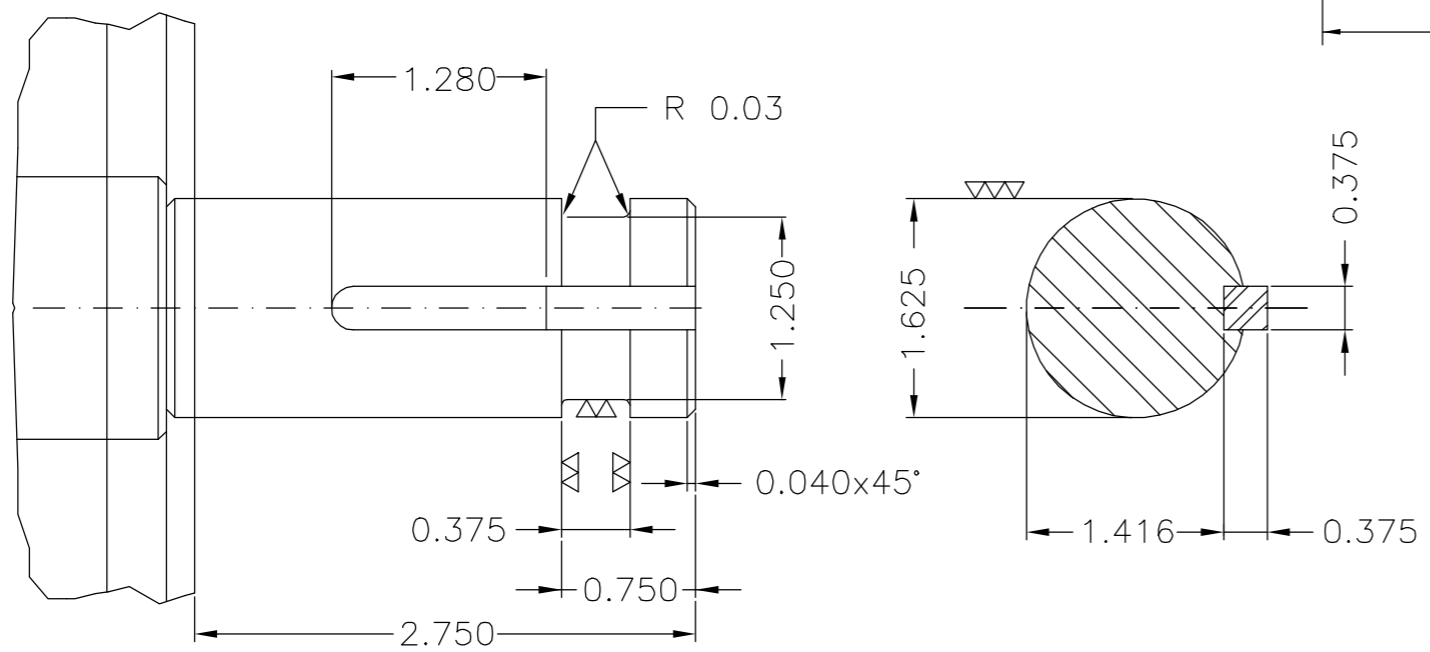
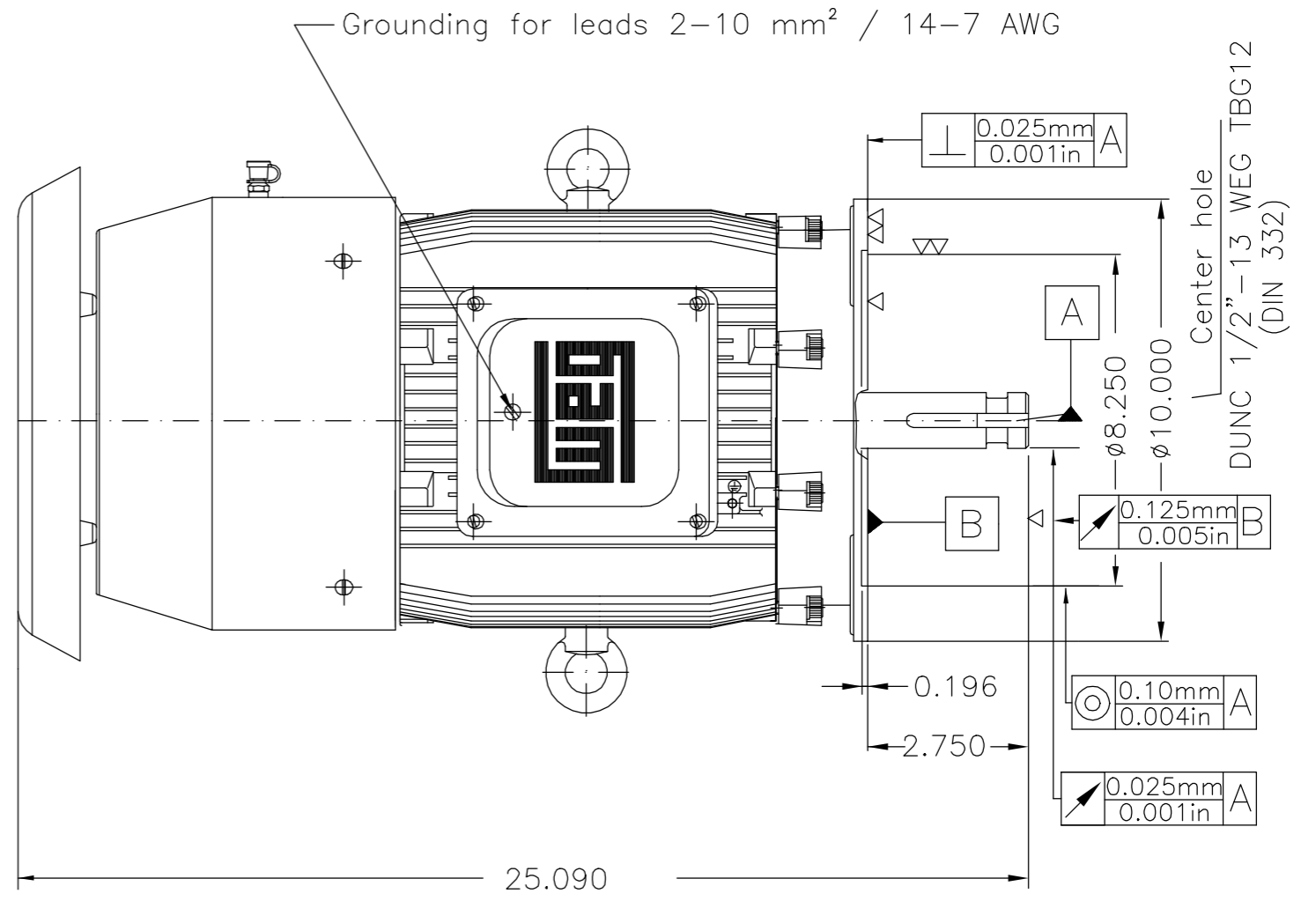
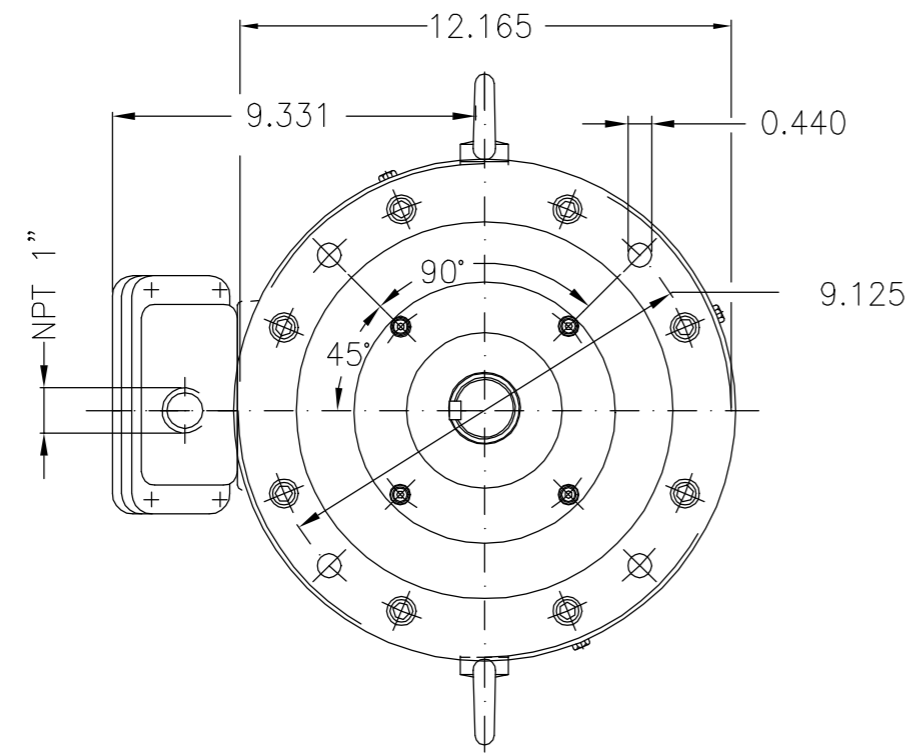
EIXO/SHAFT	
PADRÃO/STANDARD	X
OPCIONAL/OPTIONAL	
ESPECIAL/SPECIAL	

Dimensões em polegada  
Dimensions in inches

**CERTIFIED WEG MOTORES**  
Certified document.  
Not subject to changes.

THIS IS AN UPDATED REVISION, THE PREVIOUS ONE MUST BE DISREGARDED.

**ATENÇÃO/ATTENTION**  
MOTOR DEVE SER LIGADO APENAS NA POSIÇÃO VERTICAL  
MOTOR MUST BE ENERGIZED ONLY IN THE VERTICAL POSITION



Placa de identificação com marcação especial / Nameplate with special marking  
Cor RAL 5009 / Color RAL 5009  
Plano de pintura 207A / Painting plan 207A  
Forma construtiva NEMA W-6 / Mounting NEMA W-6  
Forma construtiva V1 / Mounting V1

**V.J. PAMENSKY CANADA INC.**

500002148791		ALT CONFORME 418229042	CLAUDEMIRR	JACKSONDC	JACKSONDC	14.06.2022	04
500001781587		417359503	FRANCINES	RICLAV	RICLAV	24.06.2020	03
ECM	LOC	SUMMARY OF MODIFICATIONS	EXECUTED	CHECKED	RELEASED	DATE	VER
EXECUTED	DANIELAW	THREE-PHASE IN LINE EXTRA THRUST MOTOR FRAME 215LP IP55 TEFC			10006137324		
CHECKED	RPAULI				000   04		
RELEASED	RPAULI						
REL DT	23.10.2018	WMO	Jaragua do Sul	Product Engineering	SHEET 1 / 1		

10 HP	02 Poles	60Hz		B
7.5 HP	02 Poles	60Hz	415234508/0	A



UNCONTROLLED COPY

RELEASED

ZME A3