

# DATA SHEET

## Single Phase Induction Motor - Squirrel Cage



Customer	:			
Product line	: Jet Pump - C type Single-Phase	Product code : 15366043		
Frame	: 56C	Cooling method : IC01 - ODP		
Insulation class	: F	Mounting : F-1		
Duty cycle	: Cont.(S1)	Rotation <sup>1</sup> : CCW		
Ambient temperature	: -20°C to +40°C	Starting method : Direct On Line		
Altitude	: 1000 m.a.s.l.	Approx. weight <sup>3</sup> : 20.8 kg		
Design	: L	Moment of inertia (J) : 0.0040 kgm <sup>2</sup>		
Output [HP]		3		
Poles		2		
Frequency [Hz]		60		
Rated voltage [V]		230		
Rated current [A]		12.2		
L. R. Amperes [A]		100		
LRC [A]		8.2x(Code J)		
No load current [A]		3.90		
Rated speed [RPM]		3500		
Slip [%]		2.78		
Rated torque [kgfm]		0.622		
Locked rotor torque [%]		220		
Breakdown torque [%]		280		
Service factor		1.15		
Temperature rise		80 K		
Locked rotor time		10s (cold) 6s (hot)		
Noise level <sup>2</sup>		58.0 dB(A)		
Efficiency (%)	25%			
	50%	76.0		
	75%	81.0		
	100%	84.1		
Power Factor	25%			
	50%	0.87		
	75%	0.92		
	100%	0.93		
Bearing type	: <u>Drive end</u> 6203 2RS <u>Non drive end</u> 6202 2RS	Foundation loads		
Sealing	: Without Bearing Seal Without Bearing Seal	Max. traction : 45 kgf		
Lubrication interval	: - -	Max. compression : 66 kgf		
Lubricant amount	: - -			
Lubricant type	: Mobil Polyrex EM			
Notes				
This revision replaces and cancel the previous one, which must be eliminated. (1) Looking the motor from the shaft end. (2) Measured at 1m and with tolerance of +3dB(A). (3) Approximate weight subject to changes after manufacturing process. (4) At 100% of full load.		These are average values based on tests with sinusoidal power supply, subject to the tolerances stipulated in NEMA MG-1.		
Rev.	Changes Summary	Performed	Checked	Date
Performed by				
Checked by			Page	Revision
Date	17/05/2022		1 / 2	

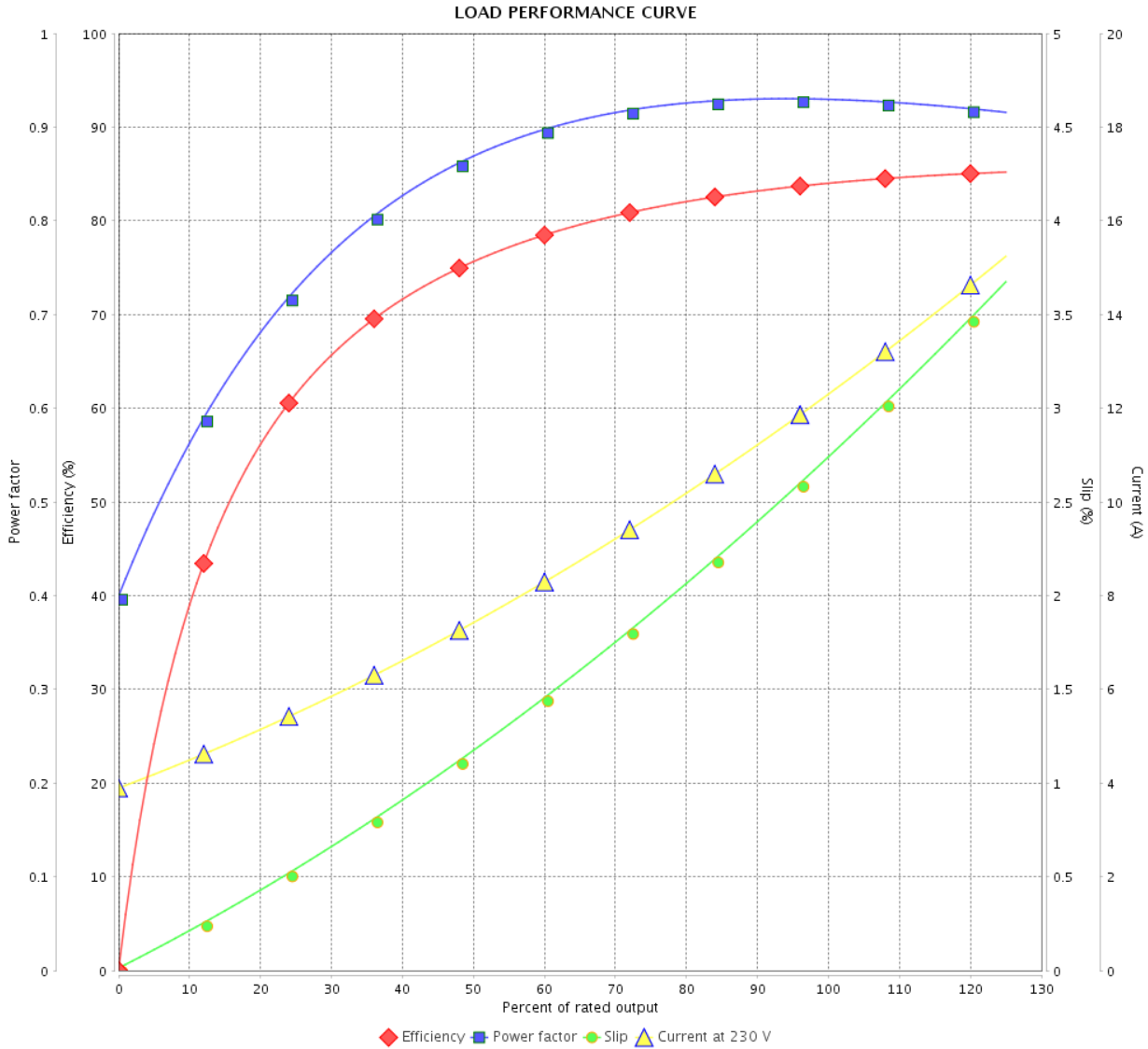
# LOAD PERFORMANCE CURVE

Single Phase Induction Motor - Squirrel Cage



Customer :

Product line : Jet Pump - C type Single-Phase Product code : 15366043



Performance : 230 V 60 Hz 2P

Rated current	: 12.2 A	Moment of inertia (J)	: 0.0040 kgm <sup>2</sup>
LRC	: 8.2	Duty cycle	: Cont.(S1)
Rated torque	: 0.622 kgfm	Insulation class	: F
Locked rotor torque	: 220 %	Service factor	: 1.15
Breakdown torque	: 280 %	Temperature rise	: 80 K
Rated speed	: 3500 rpm	Design	: L

Rev.	Changes Summary	Performed	Checked	Date
Performed by			Page 2 / 2	Revision
Checked by				
Date	17/05/2022			

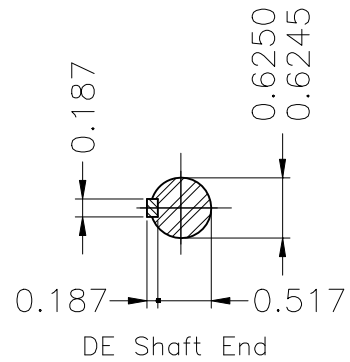
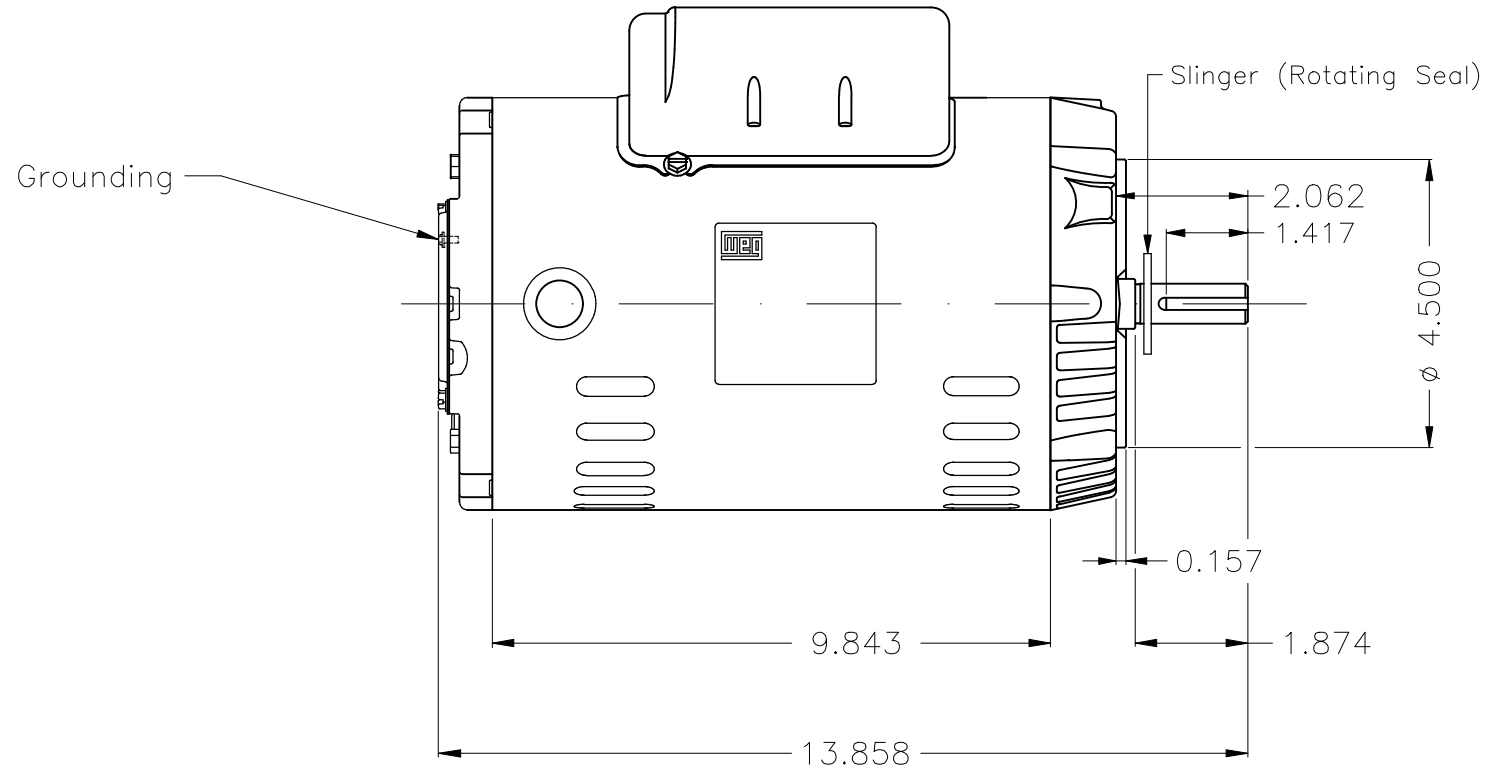
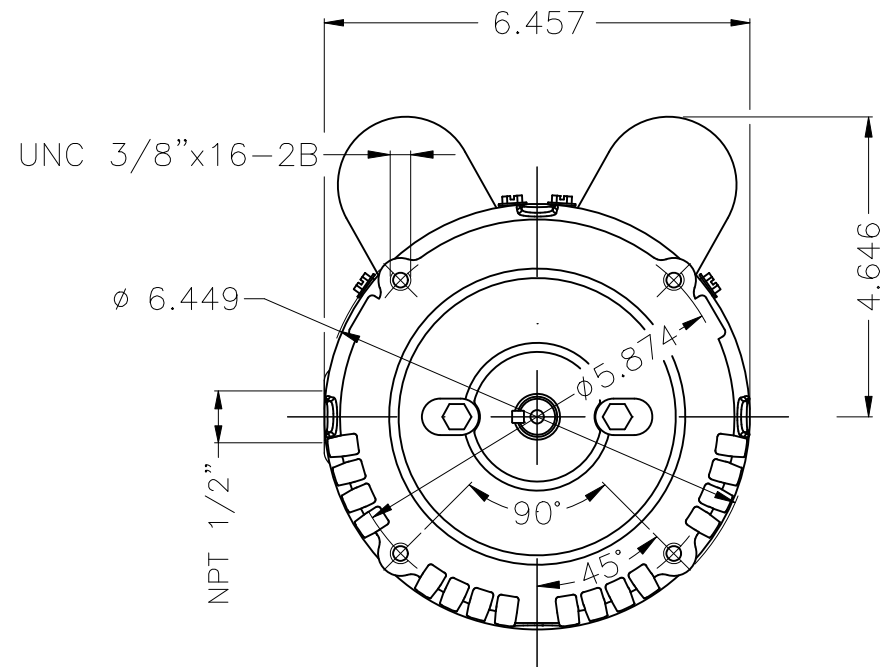
A

B

C

D

E



Color Munsell N 1 matte black																				
Painting plan 207N																				
Mounting F-1/B14R(D)																				
					HYBRISUSER															
ECM		LOC		SUMMARY OF MODIFICATIONS			EXECUTED	CHECKED	RELEASED	DATE										
EXECUTED		HYBRISUSER		SINGLE PH. MOTOR ROLLED STEEL JET PUMP KEYED PREM. EFF.			EXECUTED	CHECKED	RELEASED	DATE										
CHECKED				FRAME 56C IP21 ODP																
RELEASED																				
REL. DATE		WMO		Jaragua do Sul			Product Engineering	SHEET	1 / 1	VER										
<table border="1"> <tr> <td colspan="4">3 HP 02 Poles 60 Hz</td> <td colspan="1">A</td> <td colspan="1">REL. DATE</td> <td colspan="1">WMO</td> <td colspan="1">Jaragua do Sul</td> <td colspan="1">Product Engineering</td> <td colspan="1">SHEET</td> <td colspan="1">1 / 1</td> </tr> </table>										3 HP 02 Poles 60 Hz				A	REL. DATE	WMO	Jaragua do Sul	Product Engineering	SHEET	1 / 1
3 HP 02 Poles 60 Hz				A	REL. DATE	WMO	Jaragua do Sul	Product Engineering	SHEET	1 / 1										

PREVIEW

WDD 00



Dimensions in inches

XME A3