

# DATA SHEET



## Three Phase Induction Motor - Squirrel Cage

Customer :

Product line : W22 P Base NEMA Premium Efficiency Three-Phase      Product code : 15280258

Frame	: 444/5HP	Locked rotor time	: 48s (cold) 27s (hot)
Output	: 125 HP	Temperature rise	: 80 K
Poles	: 4	Duty cycle	: Cont.(S1)
Frequency	: 60 Hz	Ambient temperature	: -20°C to +40°C
Rated voltage	: 575 V	Altitude	: 1000 m.a.s.l.
Rated current	: 111 A	Protection degree	: IP55
L. R. Amperes	: 724 A	Cooling method	: IC411 - TEFC
LRC	: 6.5x(Code G)	Mounting	: W-6
No load current	: 36.8 A	Rotation <sup>1</sup>	: Both (CW and CCW)
Rated speed	: 1785 rpm	Noise level <sup>2</sup>	: 73.0 dB(A)
Slip	: 0.83 %	Starting method	: Direct On Line
Rated torque	: 50.8 kgfm	Approx. weight <sup>3</sup>	: 761 kg
Locked rotor torque	: 200 %		
Breakdown torque	: 229 %		
Insulation class	: F		
Service factor	: 1.15		
Moment of inertia (J)	: 2.41 kgm <sup>2</sup>		
Design	: B		

Output	50%	75%	100%	Foundation loads
Efficiency (%)	95.0	95.4	95.4	Max. traction
Power Factor	0.74	0.82	0.85	Max. compression

Losses at normative operating points (speed;torque), in percentage of rated output power

P1 (0,9;1,0)	P2 (0,5;1,0)	P3 (0,25;1,0)	P4 (0,9;0,5)	P5 (0,5;0,5)	P6 (0,5;0,25)	P7 (0,25;0,25)
4.5	3.4	3.0	2.4	1.4	0.9	0.6

		<u>Drive end</u>	<u>Non drive end</u>
Bearing type	:	6319 C3	6316 C3
Sealing	:	Viton Lip Seal	Viton Seal
Lubrication interval	:	4000 h	5000 h
Lubricant amount	:	45 g	34 g
Lubricant type	:	Mobil Polyrex EM	

Notes

This revision replaces and cancel the previous one, which must be eliminated.

- (1) Looking the motor from the shaft end.
- (2) Measured at 1m and with tolerance of +3dB(A).
- (3) Approximate weight subject to changes after manufacturing process.
- (4) At 100% of full load.

These are average values based on tests with sinusoidal power supply, subject to the tolerances stipulated in NEMA MG-1.

Rev.	Changes Summary	Performed	Checked	Date
Performed by				
Checked by			Page	Revision
Date	29/10/2024		1 / 2	

# LOAD PERFORMANCE CURVE

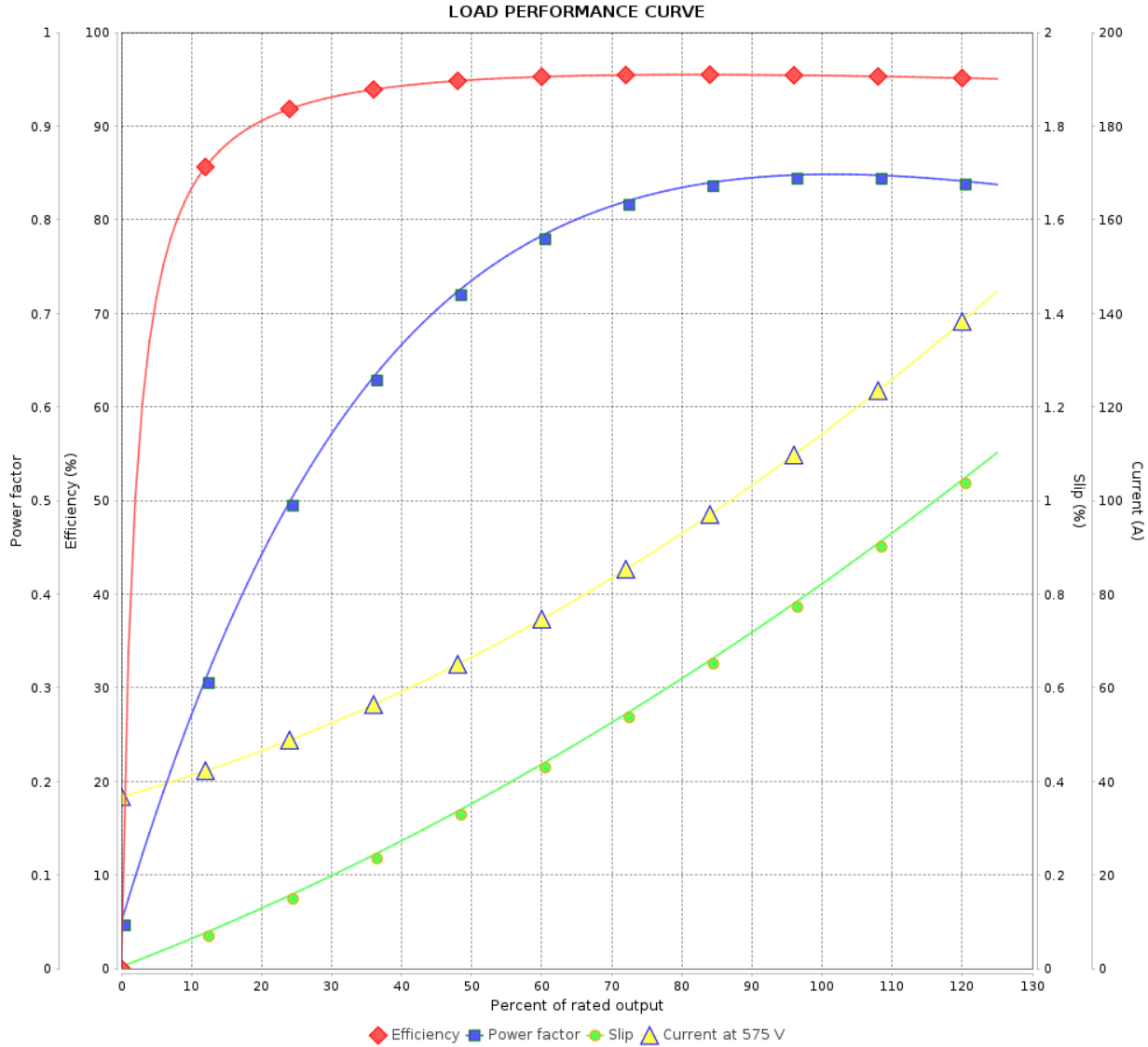
Three Phase Induction Motor - Squirrel Cage



Customer :

Product line : W22 P Base NEMA Premium  
Efficiency Three-Phase

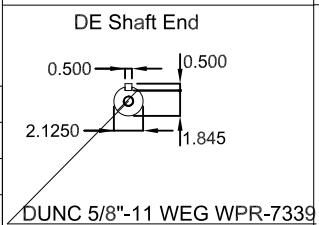
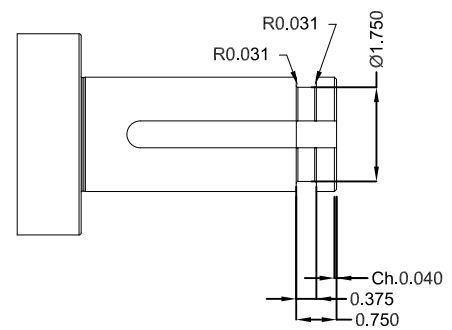
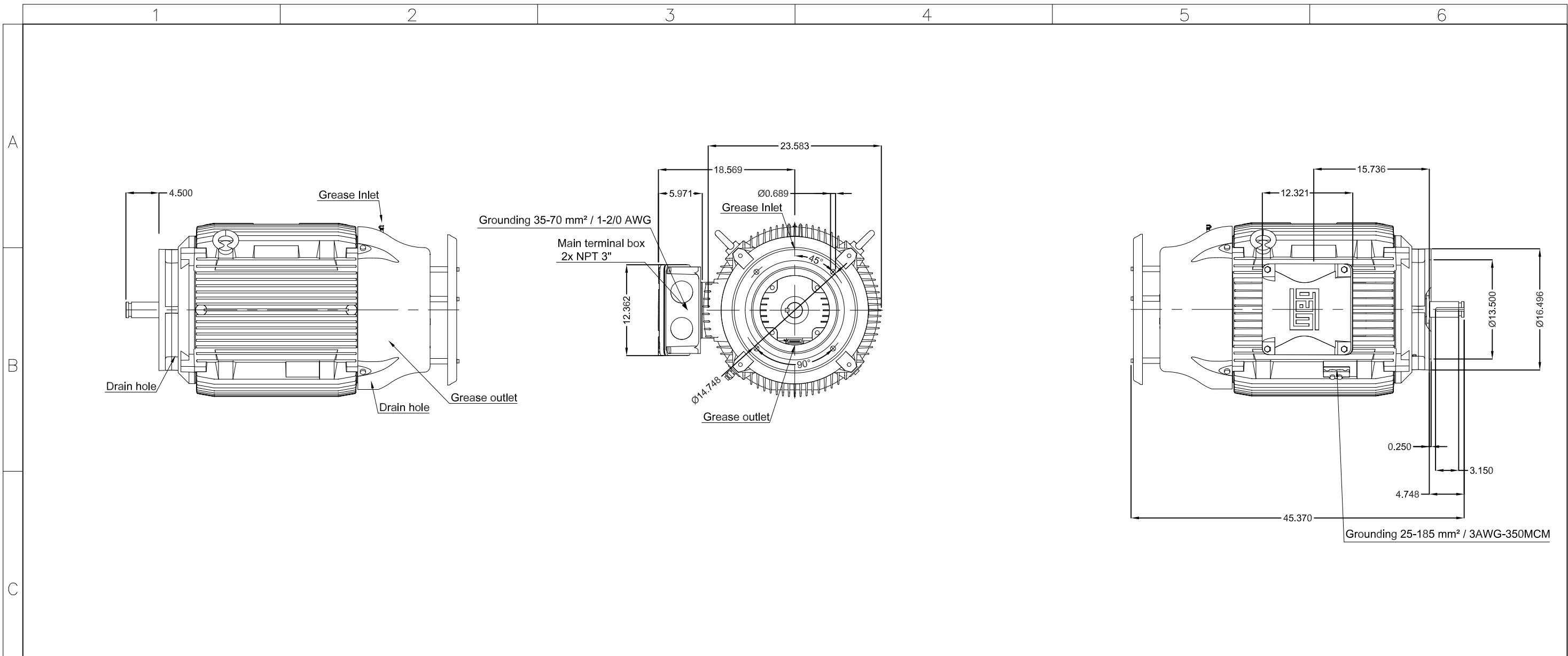
Product code : 15280258



Performance : 575 V 60 Hz 4P

Rated current	: 111 A	Moment of inertia (J)	: 2.41 kgm <sup>2</sup>
LRC	: 6.5	Duty cycle	: Cont.(S1)
Rated torque	: 50.8 kgfm	Insulation class	: F
Locked rotor torque	: 200 %	Service factor	: 1.15
Breakdown torque	: 229 %	Temperature rise	: 80 K
Rated speed	: 1785 rpm	Design	: B

Rev.	Changes Summary	Performed	Checked	Date
Performed by			Page 2 / 2	Revision
Checked by				
Date	29/10/2024			



Color RAL 5009  
 Painting plan 203A  
 Mounting NEMA W-6  
 Mounting V1

DUNC 5/8"-11 WEG WPR-7339

125 HP 04 Poles 60 Hz A

ECM		LOC	SUMMARY OF MODIFICATIONS		EXECUTED	CHECKED	RELEASED	DATE	VER
EXECUTED	HYBRISUSER		THREE PH. MOTOR W22 P. BASE NEMA PREM. EFF.						00
CHECKED			FRAME 444/5HP IP55 TEFC						
RELEASED									
REL. DATE									

PREVIEW  
 WDD 00  
 SHEET /

