

DATA SHEET

Single Phase Induction Motor - Squirrel Cage



Customer :				
Product line : Single-Phase		Product code : 15280103		
Frame : W56C	Insulation class : F	Cooling method : IC01 - ODP	Mounting : F-1	
Duty cycle : Cont.(S1)	Ambient temperature : -20°C to +40°C	Rotation ¹ : Both (CW and CCW)	Starting method : Direct On Line	
Altitude : 1000 m.a.s.l.	Design : N	Approx. weight ³ : 9.9 kg	Moment of inertia (J) : 0.0011 kgm ²	
Output [HP]	0.33			
Poles	2			
Frequency [Hz]	60			
Rated voltage [V]	115/208-230			
Rated current [A]	3.20/1.77-1.60			
L. R. Amperes [A]	28.2/15.6-14.1			
LRC [A]	8.8x(Code L)			
No load current [A]	1.00/0.431-0.500			
Rated speed [RPM]	3510			
Slip [%]	2.50			
Rated torque [kgfm]	0.068			
Locked rotor torque [%]	280			
Breakdown torque [%]	300			
Service factor				
Temperature rise	80 K			
Locked rotor time	27s (cold) 15s (hot)			
Noise level ²	56.0 dB(A)			
Efficiency (%)	25%			
	50%	56.0		
	75%	64.0		
	100%	70.5		
Power Factor	25%			
	50%	0.97		
	75%	0.97		
	100%	0.97		
Bearing type : 6203 ZZ	Drive end	Non drive end	Foundation loads	
Sealing : Without			Max. traction : 1 kgf	
	Bearing Seal	Bearing Seal	Max. compression : 11 kgf	
Lubrication interval : -	-	-		
Lubricant amount : -	-	-		
Lubricant type : Mobil Polyrex EM				
Notes				
This revision replaces and cancel the previous one, which must be eliminated. (1) Looking the motor from the shaft end. (2) Measured at 1m and with tolerance of +3dB(A). (3) Approximate weight subject to changes after manufacturing process. (4) At 100% of full load.			These are average values based on tests with sinusoidal power supply, subject to the tolerances stipulated in NEMA MG-1.	
Rev.	Changes Summary		Performed	Checked
Performed by				
Checked by			Page	Revision
Date	17/05/2022		1 / 2	

LOAD PERFORMANCE CURVE

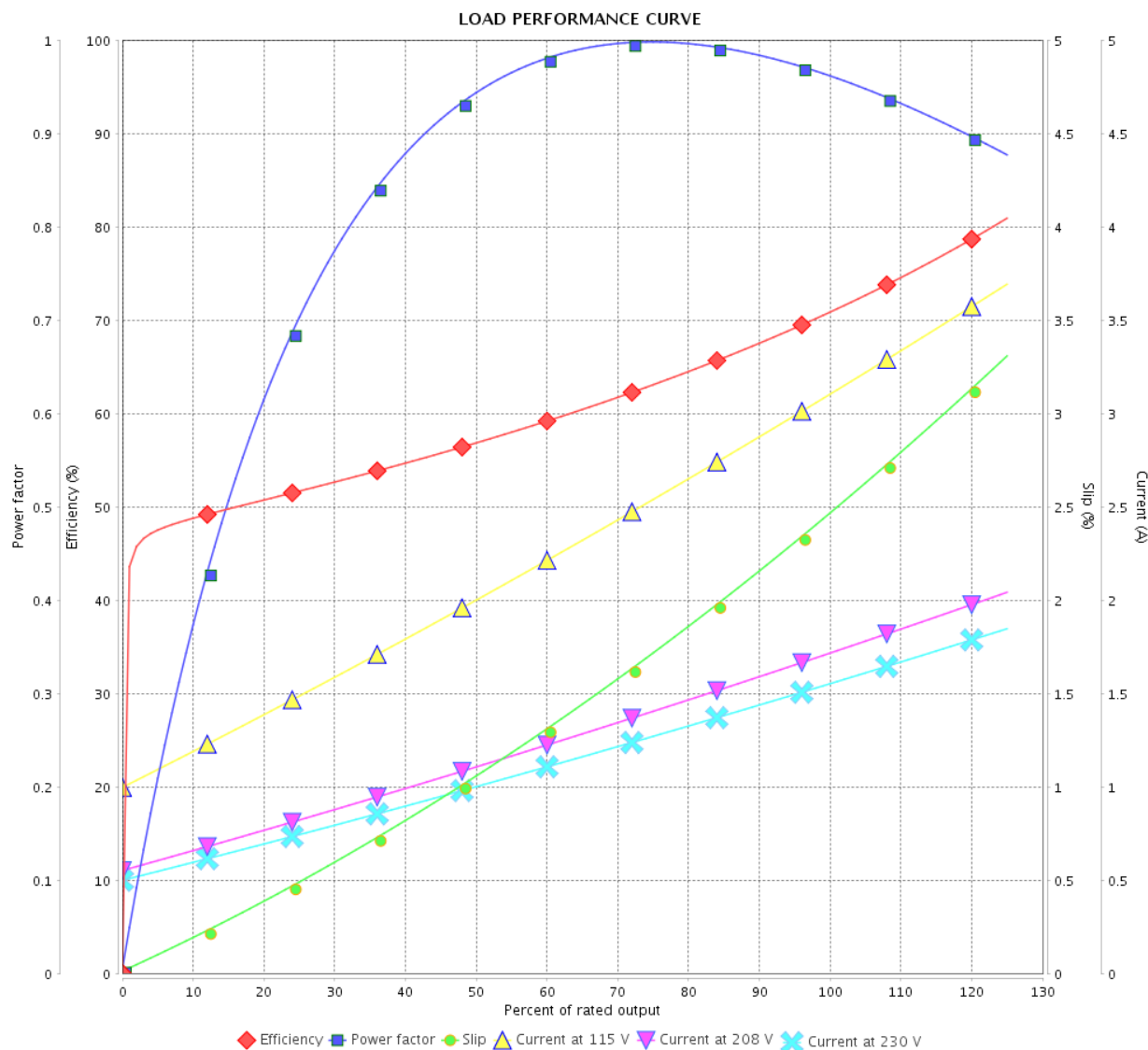
Single Phase Induction Motor - Squirrel Cage



Customer :

Product line : Single-Phase

Product code : 15280103

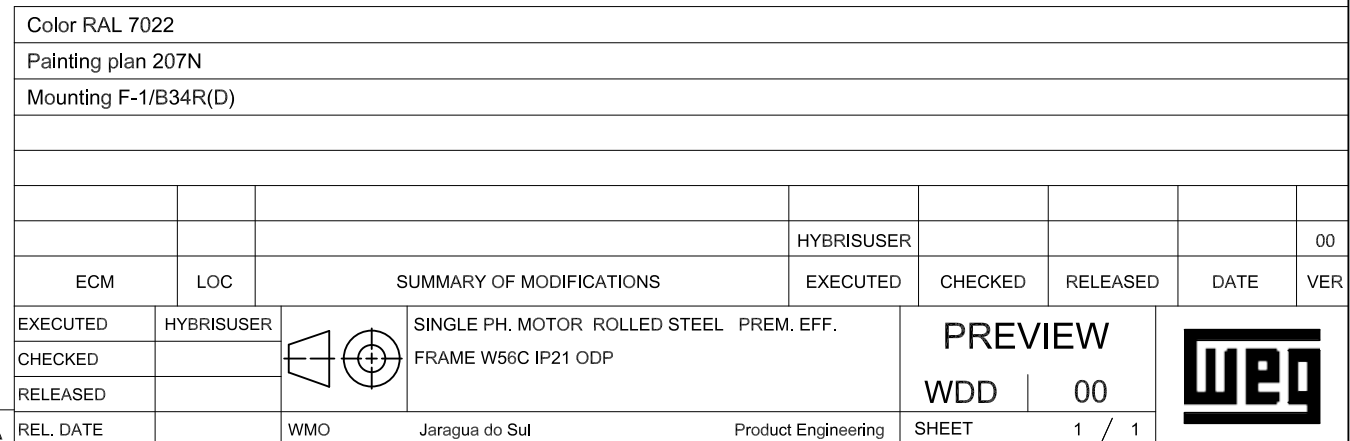
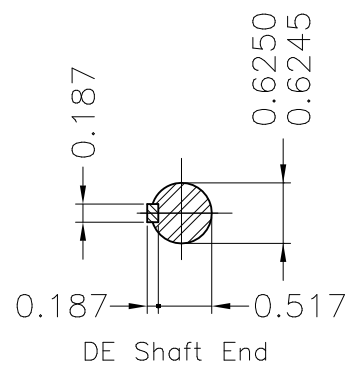


Performance : 115/208-230 V 60 Hz 2P

Rated current : 3.20/1.77-1.60 A
 LRC : 8.8
 Rated torque : 0.068 kgfm
 Locked rotor torque : 280 %
 Breakdown torque : 300 %
 Rated speed : 3510 rpm

Moment of inertia (J) : 0.0011 kgm²
 Duty cycle : Cont.(S1)
 Insulation class : F
 Service factor :
 Temperature rise : 80 K
 Design : N

Rev.	Changes Summary		Performed	Checked	Date
Performed by				Page	Revision
Checked by				2 / 2	
Date					



Dimensions in inches

XME A3