

DATA SHEET



Three Phase Induction Motor - Squirrel Cage

Customer :					
Product line		: Rolled Steel NEMA Premium Efficiency Three-Phase		Product code : 15267711	
Frame	: 213/5T	Locked rotor time	: 27s (cold) 15s (hot)		
Output	: 10 HP (7.5 kW)	Temperature rise	: 80 K		
Frequency	: 60 Hz	Duty cycle	: Cont.(S1)		
Rated voltage	: 208 V	Ambient temperature	: -20°C to +40°C		
Poles	: 4	Altitude	: 1000 m.a.s.l.		
Rated current	: 27.0 A	Protection degree	: IP55		
	: 7.0x(Code H)	Cooling method	: IC411 - TEFC		
Rated speed	: 1760 rpm	Mounting	: F-1		
Rated torque	: 4.12 kgfm	Rotation ¹	: Both (CW and CCW)		
Insulation class	: F	Noise level ²	: 60.0 dB(A)		
Service factor	: 1.15	Starting method	: Direct On Line		
Moment of inertia (J)	: 0.0451 kgm ²	Approx. weight ³	: 59.1 kg		
Design	: B				
Output	25%	50%	75%	100%	
Efficiency (%)	0.000	91.0	91.0	91.7	
Power Factor	0.00	0.67	0.78	0.84	
Foundation loads					
Max. traction		: 199 kgf			
Max. compression		: 258 kgf			
		<u>Drive end</u>	<u>Non drive end</u>		
Bearing type	:	6208 ZZ	6206 ZZ		
Sealing	:	V'Ring	Without Bearing Seal		
Lubrication interval	:	0 h	0 h		
Lubricant amount	:	0 g	0 g		
Lubricant type	:	Mobil Polyrex EM			
Notes					
This revision replaces and cancel the previous one, which must be eliminated.					
(1) Looking the motor from the shaft end.					
(2) Measured at 1m and with tolerance of +3dB(A).					
(3) Approximate weight subject to changes after manufacturing process.					
(4) At 100% of full load.					
These are average values based on tests with sinusoidal power supply, subject to the tolerances stipulated in NEMA MG-1.					
Rev.	Changes Summary		Performed	Checked	Date
Performed by					
Checked by					
Date	03/06/2026			Page	Revision
				1 / 2	

LOAD PERFORMANCE CURVE

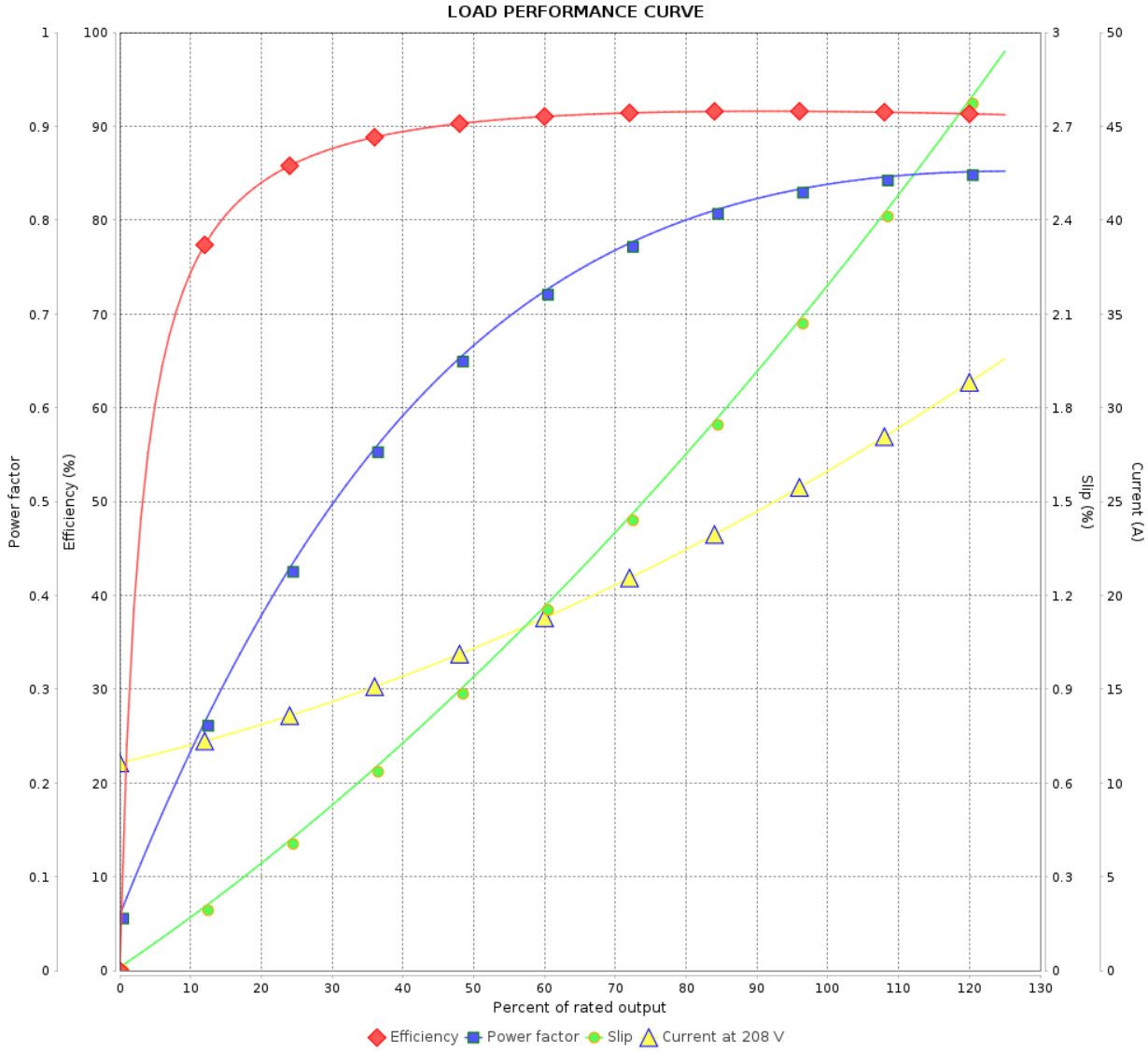
Three Phase Induction Motor - Squirrel Cage



Customer : _____

Product line : Rolled Steel NEMA Premium
Efficiency Three-Phase

Product code : 15267711

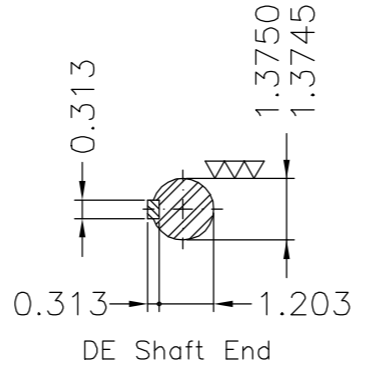
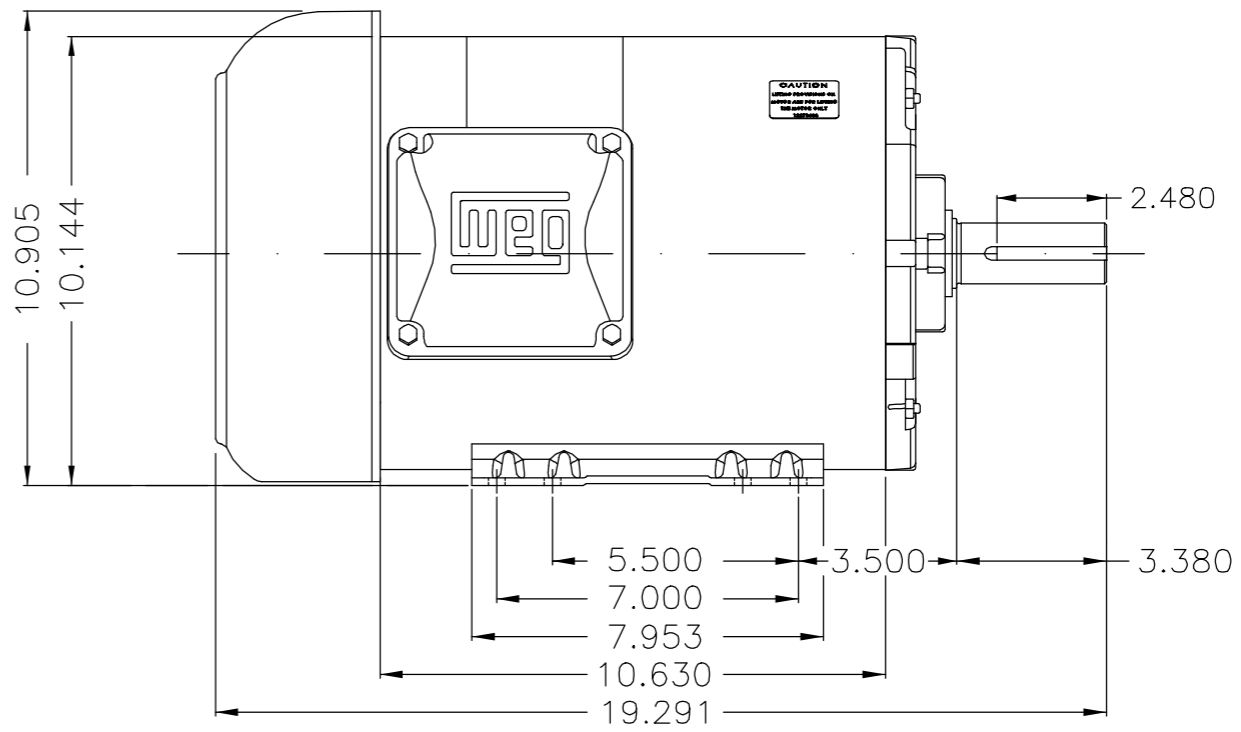
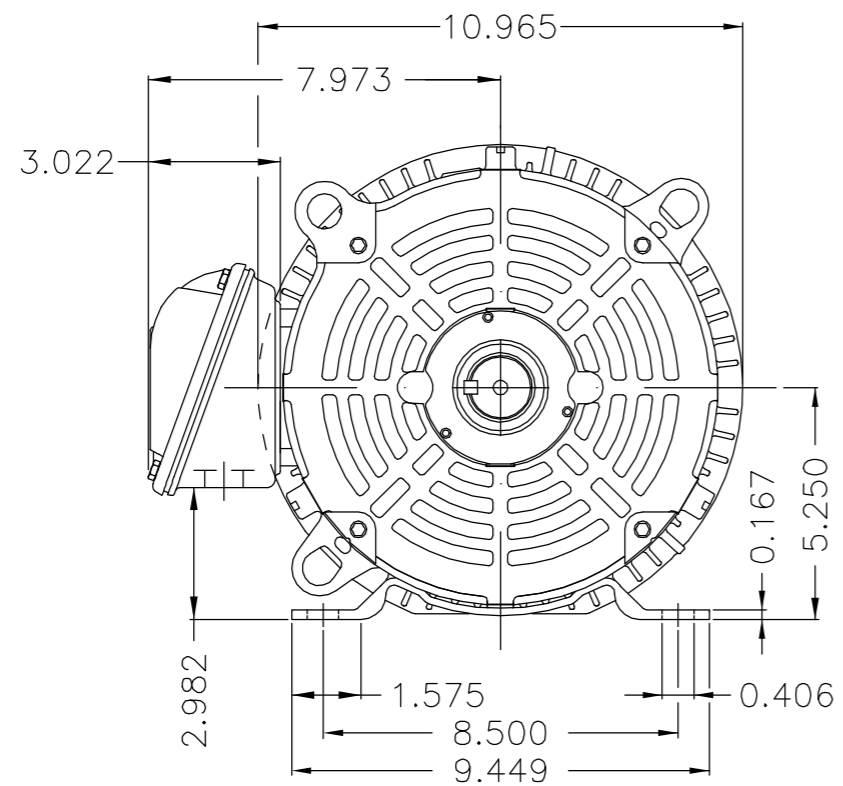
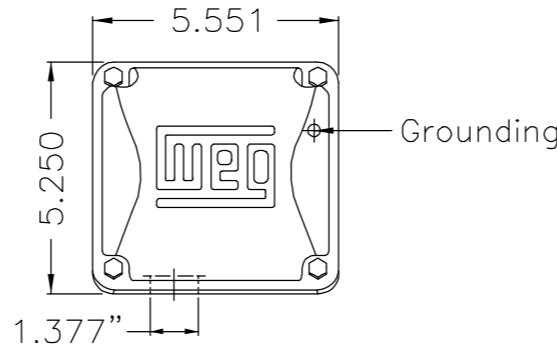


Rev.	Changes Summary	Performed	Checked	Date
Performed by			Page 2 / 2	Revision
Checked by				
Date				

EJE/SHAFT	
ESTÁNDAR/STANDARD	X
OPCIONAL/OPTIONAL	
ESPECIAL/SPECIAL	

Dimensões em polegada
Dimensions in inches

THIS IS AN UPDATED REVISION, THE PREVIOUS ONE MUST BE DISREGARDED.



Color Munsell N 1 negro mate / Color Munsell N 1 matte black
 Plan de pintura 207N / Painting plan 207N
 Forma constructiva B3D / Mounting F-1/B3R(D)
V.J. PAMENSKY CANADA INC.

OV: 50495980

500001700547	DOCUMENTO NOVO
ECM	LOC
EXECUTED	ECHEVERRIA
CHECKED	PIRWUSER
RELEASED	PIRWUSER

SUMMARY OF MODIFICATIONS		EXECUTED	CHECKED	RELEASED	DATE	VER
THREE P. MOTOR CLOS ROLLED STEEL NEMA PREM						
FRAME 213/5T IP55 TEFC						
REL DT	18.12.2019	WMX	Huehuetoca	Product Engineering	SHEET	1 / 1

10 HP 04 Poles 60Hz



UNCONTROLLED COPY RELEASED ZME A3