

DATA SHEET



Three Phase Induction Motor - Squirrel Cage

Customer :						
Product line		: W21 In Line Extra Thrust NEMA Premium Efficiency Three-Phase		Product code : 15290728		
Frame	: 326LP		Locked rotor time	: 36s (cold) 20s (hot)		
Output	: 25 HP (18.5 kW)		Temperature rise	: 80 K		
Poles	: 8		Duty cycle	: Cont.(S1)		
Frequency	: 60 Hz		Ambient temperature	: -20°C to +40°C		
Rated voltage	: 575 V		Altitude	: 1000 m.a.s.l.		
Rated current	: 28.3 A		Protection degree	: IP55		
L. R. Amperes	: 144 A		Cooling method	: IC411 - TEFC		
LRC	: 5.1x(Code G)		Mounting	: W-6		
No load current	: 16.3 A		Rotation ¹	: Both (CW and CCW)		
Rated speed	: 885 rpm		Noise level ²	: 56.0 dB(A)		
Slip	: 1.67 %		Starting method	: Direct On Line		
Rated torque	: 20.5 kgfm		Approx. weight ³	: 305 kg		
Locked rotor torque	: 220 %					
Breakdown torque	: 240 %					
Insulation class	: F					
Service factor	: 1.15					
Moment of inertia (J)	: 0.5023 kgm ²					
Design	: B					
Output	25%	50%	75%	100%	Foundation loads	
Efficiency (%)	0.000	91.0	92.4	92.4	Max. traction	
Power Factor	0.00	0.51	0.63	0.71	Max. compression	
			<u>Drive end</u>		<u>Non drive end</u>	
Bearing type	:	6212 C3			7310BECB	
Sealing	:	Oil Seal			Lip Seal	
Lubrication interval	:	20000 h			18706 h	
Lubricant amount	:	13 g			15 g	
Lubricant type	:	Mobil Polyrex EM				
Notes						
This revision replaces and cancel the previous one, which must be eliminated. (1) Looking the motor from the shaft end. (2) Measured at 1m and with tolerance of +3dB(A). (3) Approximate weight subject to changes after manufacturing process. (4) At 100% of full load.			These are average values based on tests with sinusoidal power supply, subject to the tolerances stipulated in NEMA MG-1.			
Rev.	Changes Summary			Performed	Checked	Date
Performed by						
Checked by					Page	Revision
Date	29/10/2024				1 / 2	

LOAD PERFORMANCE CURVE

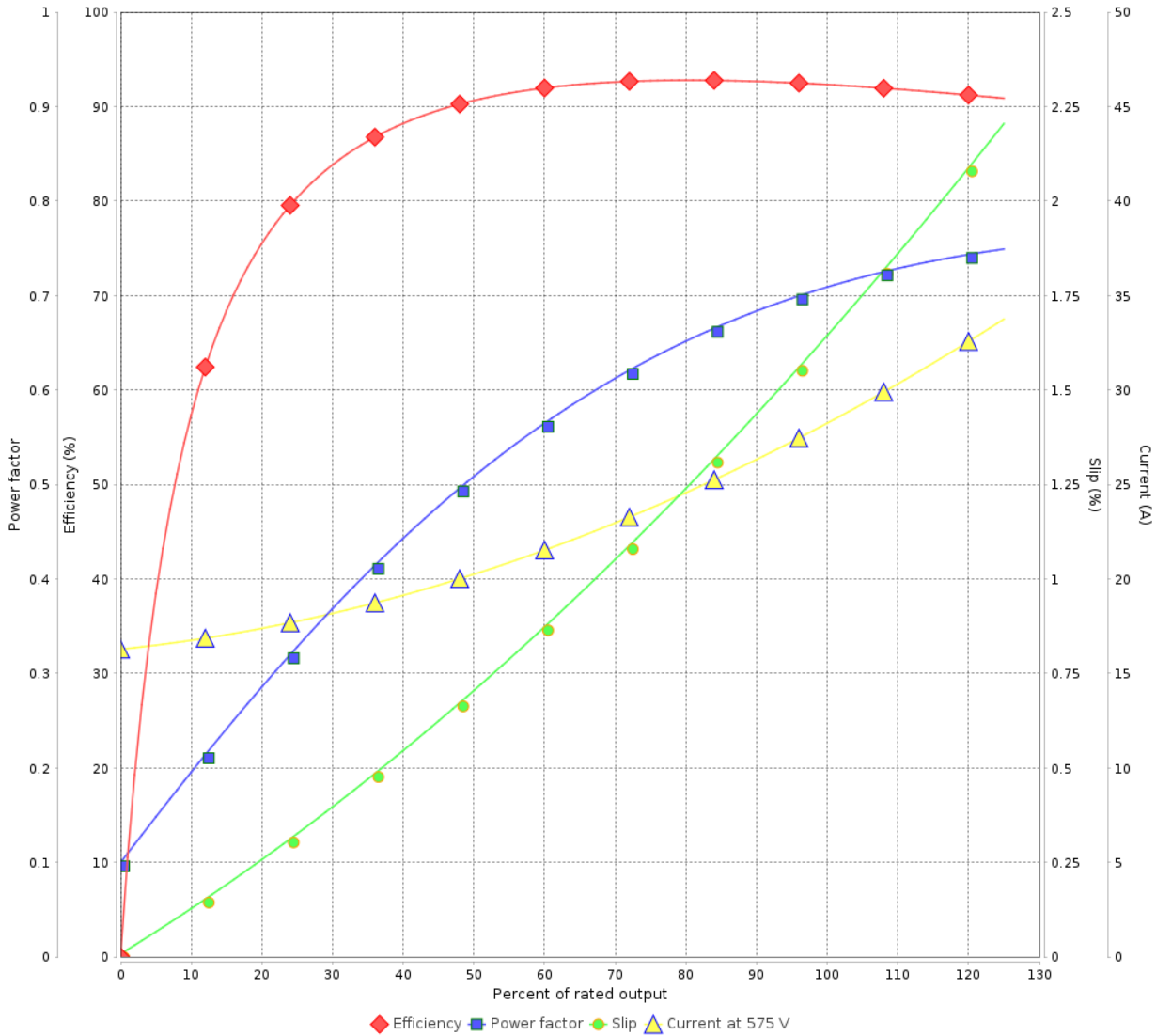
Three Phase Induction Motor - Squirrel Cage



Customer :

Product line : W21 In Line Extra Thrust NEMA Premium Efficiency Three-Phase Product code : 15290728

LOAD PERFORMANCE CURVE



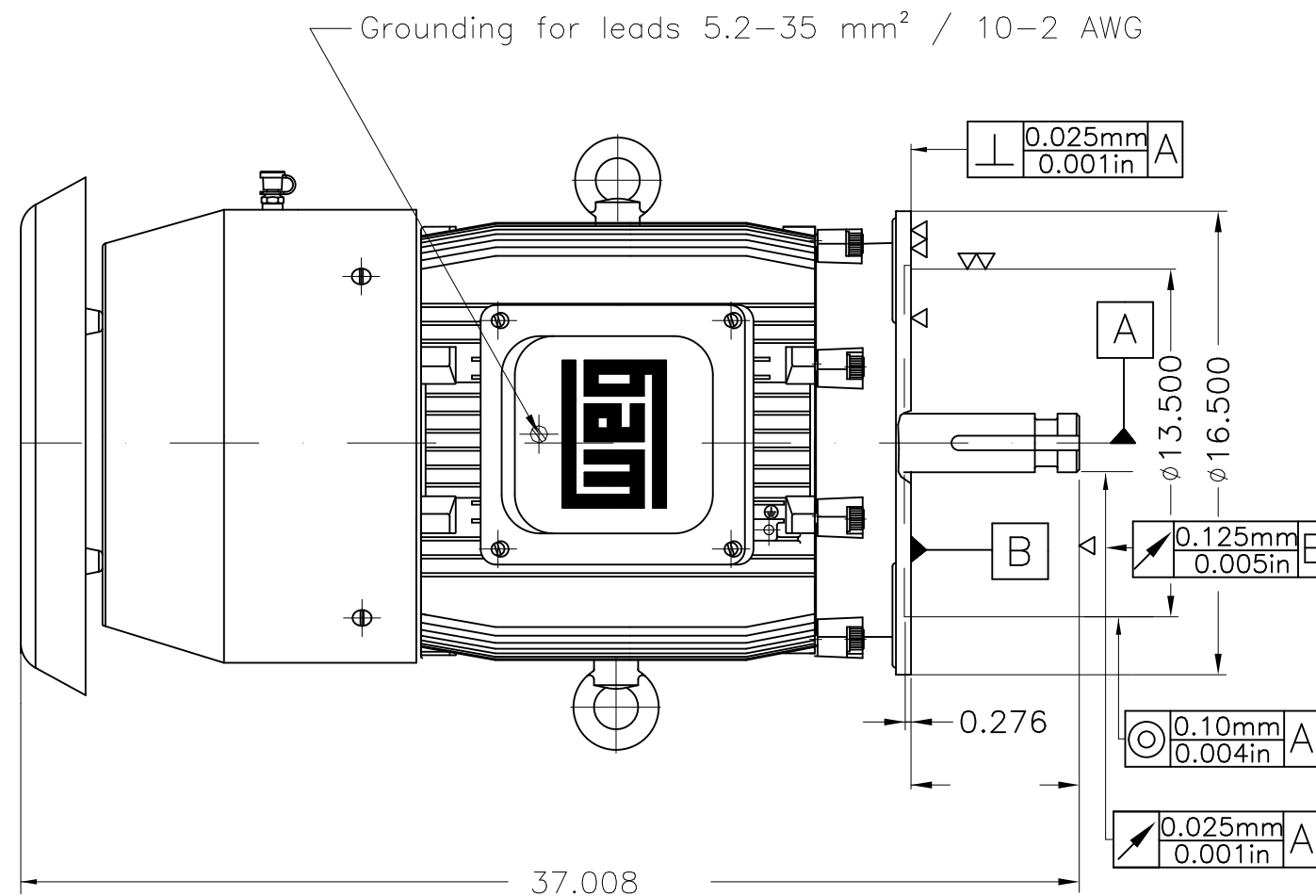
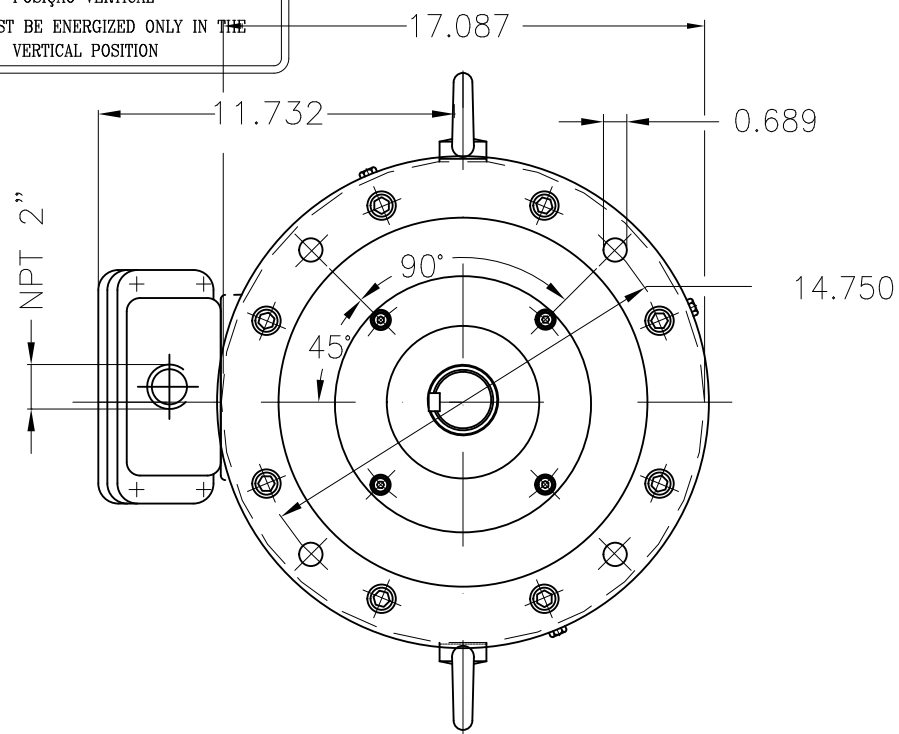
Performance : 575 V 60 Hz 8P

Rated current	: 28.3 A	Moment of inertia (J)	: 0.5023 kgm ²
LRC	: 5.1	Duty cycle	: Cont.(S1)
Rated torque	: 20.5 kgfm	Insulation class	: F
Locked rotor torque	: 220 %	Service factor	: 1.15
Breakdown torque	: 240 %	Temperature rise	: 80 K
Rated speed	: 885 rpm	Design	: B

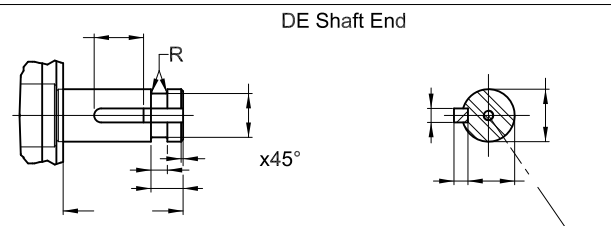
Rev.	Changes Summary	Performed	Checked	Date
Performed by			Page 2 / 2	Revision
Checked by				
Date	29/10/2024			

ATENÇÃO/ATTENTION

MOTOR DEVE SER LIGADO APENAS NA POSIÇÃO VERTICAL
MOTOR MUST BE ENERGIZED ONLY IN THE VERTICAL POSITION



- Sealing - oil seal ring
- Rubber drain plug
- Without switch off thermal protection
- B key
- Grease - Mobil Polyrex EM
- Plastic flat plug
- Class F insulation - 80K temperature rise
- Without Space Heaters
- Shaft material - SAE/ABNT 1040/45
- Dipping impregnation - polyester
- Without terminal block
- NDE sealing - lip seal
- Aluminum fan
- Bearing cap
- Reduced balancing with half key
- Without epoxy in the cables outlet
- Certification CSA/UL
- Packing - crate
- Without thermal protection on bearings
- With grease fitting
- C3 DE bearing
- Color RAL 5009
- Painting plan 203A
- Mounting NEMA W-6
- Mounting V1



25 HP 08 Poles 60 Hz A

						HYBRISUSER				00	
ECM	LOC	SUMMARY OF MODIFICATIONS				EXECUTED	CHECKED	RELEASED	DATE	VER	
EXECUTED	HYBRISUSER			THREE PH. MOTOR IN LINE EXTRA THRUST NEMA PREM. EFF.		PREVIEW WDD 00					
CHECKED				FRAME 326LP IP55 TEFC						SHEET	
RELEASED											
REL. DATE		WMO Jaragua do Sul		Product Engineering							