

DATA SHEET



Three Phase Induction Motor - Squirrel Cage

Customer :

Product line : W22 P Base NEMA Premium Efficiency Three-Phase Product code : 15203391

Frame	: 444/5HP	Locked rotor time	: 48s (cold) 27s (hot)
Output	: 150 HP (110 kW)	Temperature rise	: 80 K
Poles	: 4	Duty cycle	: Cont.(S1)
Frequency	: 60 Hz	Ambient temperature	: -20°C to +40°C
Rated voltage	: 575 V	Altitude	: 1000 m.a.s.l.
Rated current	: 136 A	Protection degree	: IP55
L. R. Amperes	: 898 A	Cooling method	: IC411 - TEFC
LRC	: 6.6x(Code G)	Mounting	: W-6
No load current	: 46.4 A	Rotation ¹	: Both (CW and CCW)
Rated speed	: 1784 rpm	Noise level ²	: 73.0 dB(A)
Slip	: 0.89 %	Starting method	: Direct On Line
Rated torque	: 61.0 kgfm	Approx. weight ³	: 853 kg
Locked rotor torque	: 200 %		
Breakdown torque	: 250 %		
Insulation class	: F		
Service factor	: 1.15		
Moment of inertia (J)	: 2.81 kgm ²		
Design	: B		

Output	50%	75%	100%	Foundation loads Max. traction Max. compression
Efficiency (%)	95.4	95.8	95.8	
Power Factor	0.74	0.82	0.85	

Losses at normative operating points (speed;torque), in percentage of rated output power

P1 (0,9;1,0)	P2 (0,5;1,0)	P3 (0,25;1,0)	P4 (0,9;0,5)	P5 (0,5;0,5)	P6 (0,5;0,25)	P7 (0,25;0,25)
4.5	3.5	3.1	2.4	1.5	1.1	0.6

		<u>Drive end</u>	<u>Non drive end</u>
Bearing type	:	6319 C3	6316 C3
Sealing	:	Viton Lip Seal	Viton Seal
Lubrication interval	:	4000 h	5000 h
Lubricant amount	:	45 g	34 g
Lubricant type	:	Mobil Polyrex EM	

Notes

This revision replaces and cancel the previous one, which must be eliminated.

- (1) Looking the motor from the shaft end.
- (2) Measured at 1m and with tolerance of +3dB(A).
- (3) Approximate weight subject to changes after manufacturing process.
- (4) At 100% of full load.

These are average values based on tests with sinusoidal power supply, subject to the tolerances stipulated in NEMA MG-1.

Rev.	Changes Summary	Performed	Checked	Date
Performed by				
Checked by			Page	Revision
Date	29/10/2024		1 / 2	

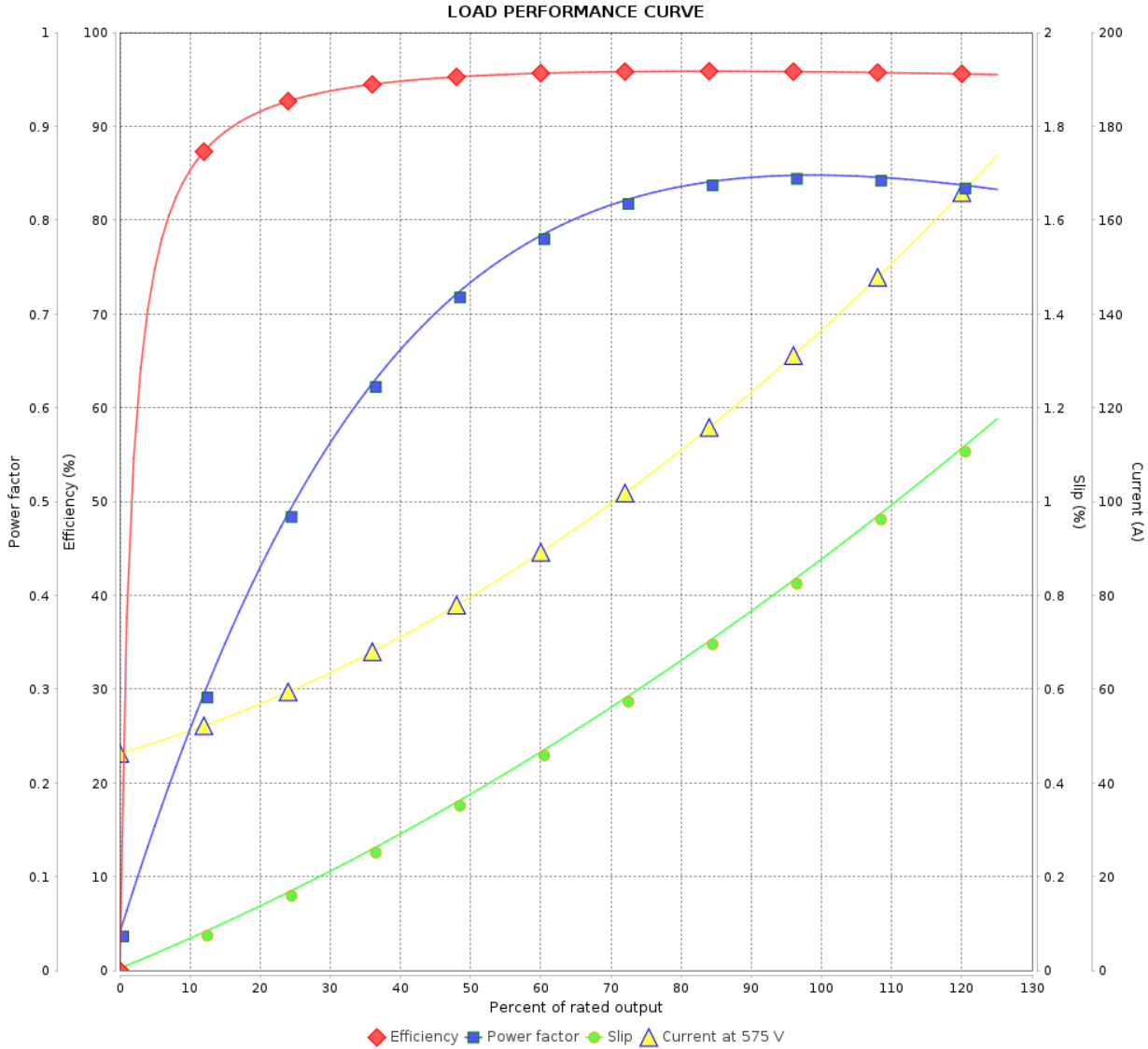
LOAD PERFORMANCE CURVE

Three Phase Induction Motor - Squirrel Cage



Customer : _____

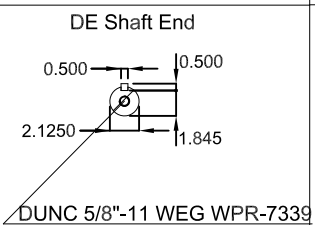
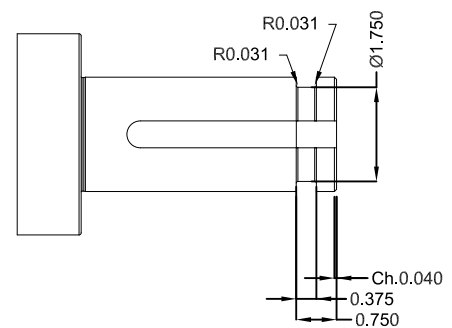
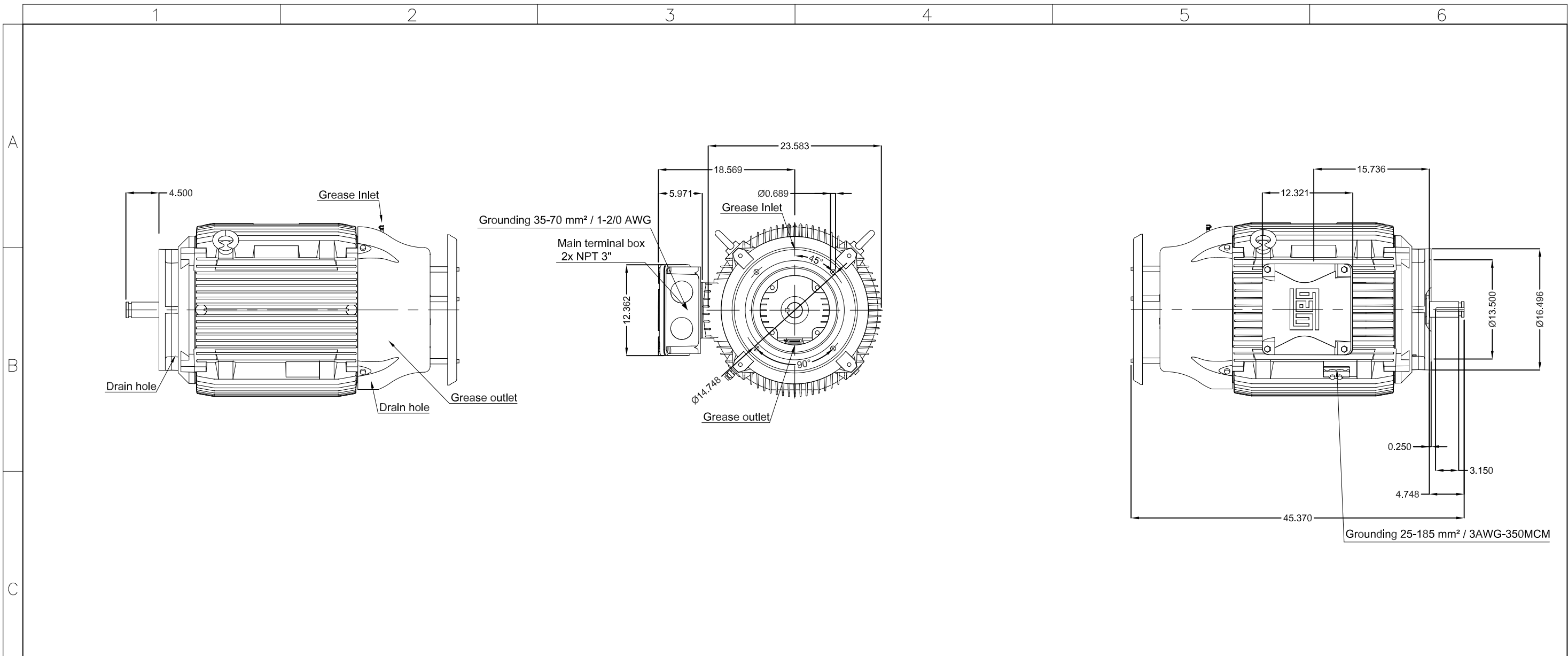
Product line : W22 P Base NEMA Premium Product code : 15203391
 Efficiency Three-Phase



Performance : 575 V 60 Hz 4P

Rated current	: 136 A	Moment of inertia (J)	: 2.81 kgm ²
LRC	: 6.6	Duty cycle	: Cont.(S1)
Rated torque	: 61.0 kgfm	Insulation class	: F
Locked rotor torque	: 200 %	Service factor	: 1.15
Breakdown torque	: 250 %	Temperature rise	: 80 K
Rated speed	: 1784 rpm	Design	: B

Rev.	Changes Summary	Performed	Checked	Date
Performed by			Page 2 / 2	Revision
Checked by				
Date	29/10/2024			



Color RAL 5009
 Painting plan 203A
 Mounting NEMA W-6
 Mounting V1

DUNC 5/8"-11 WEG WPR-7339

150 HP 04 Poles 60 Hz A

ECM	LOC	SUMMARY OF MODIFICATIONS	EXECUTED	CHECKED	RELEASED	DATE	VER
EXECUTED	HYBRISUSER	THREE PH. MOTOR W22 P. BASE NEMA PREM. EFF.					00
CHECKED		FRAME 444/5HP IP55 TEFC					
RELEASED							
REL. DATE							

PREVIEW
 WDD 00
 SHEET /

