

DATA SHEET



Three Phase Induction Motor - Squirrel Cage

Customer :

Product line : W21 In Line Extra Thrust NEMA Premium Efficiency Three-Phase Product code : 15137481

Frame	: 184LP	Locked rotor time	: 30s (cold) 17s (hot)
Output	: 5 HP (3.7 kW)	Temperature rise	: 80 K
Poles	: 4	Duty cycle	: Cont.(S1)
Frequency	: 60 Hz	Ambient temperature	: -20°C to +40°C
Rated voltage	: 575 V	Altitude	: 1000 m.a.s.l.
Rated current	: 5.25 A	Protection degree	: IP55
L. R. Amperes	: 37.3 A	Cooling method	: IC411 - TEFC
LRC	: 7.1x(Code J)	Mounting	: W-6
No load current	: 2.48 A	Rotation ¹	: Both (CW and CCW)
Rated speed	: 1750 rpm	Noise level ²	: 56.0 dB(A)
Slip	: 2.78 %	Starting method	: Direct On Line
Rated torque	: 2.07 kgfm	Approx. weight ³	: 70.0 kg
Locked rotor torque	: 250 %		
Breakdown torque	: 330 %		
Insulation class	: F		
Service factor	: 1.25		
Moment of inertia (J)	: 0.0156 kgm ²		
Design	: B		

Output	25%	50%	75%	100%	Foundation loads
Efficiency (%)	0.000	86.5	88.5	89.5	Max. traction
Power Factor	0.00	0.59	0.71	0.79	Max. compression

		<u>Drive end</u>	<u>Non drive end</u>
Bearing type	:	6206 C3	7306BECB
Sealing	:	Oil Seal	Lip Seal
Lubrication interval	:	19765 h	16157 h
Lubricant amount	:	5 g	7 g
Lubricant type	:	Mobil Polyrex EM	

Notes

This revision replaces and cancel the previous one, which must be eliminated.

- (1) Looking the motor from the shaft end.
- (2) Measured at 1m and with tolerance of +3dB(A).
- (3) Approximate weight subject to changes after manufacturing process.
- (4) At 100% of full load.

These are average values based on tests with sinusoidal power supply, subject to the tolerances stipulated in NEMA MG-1.

Rev.	Changes Summary	Performed	Checked	Date
Performed by		Page		Revision
Checked by		1 / 2		
Date	29/10/2024			

LOAD PERFORMANCE CURVE

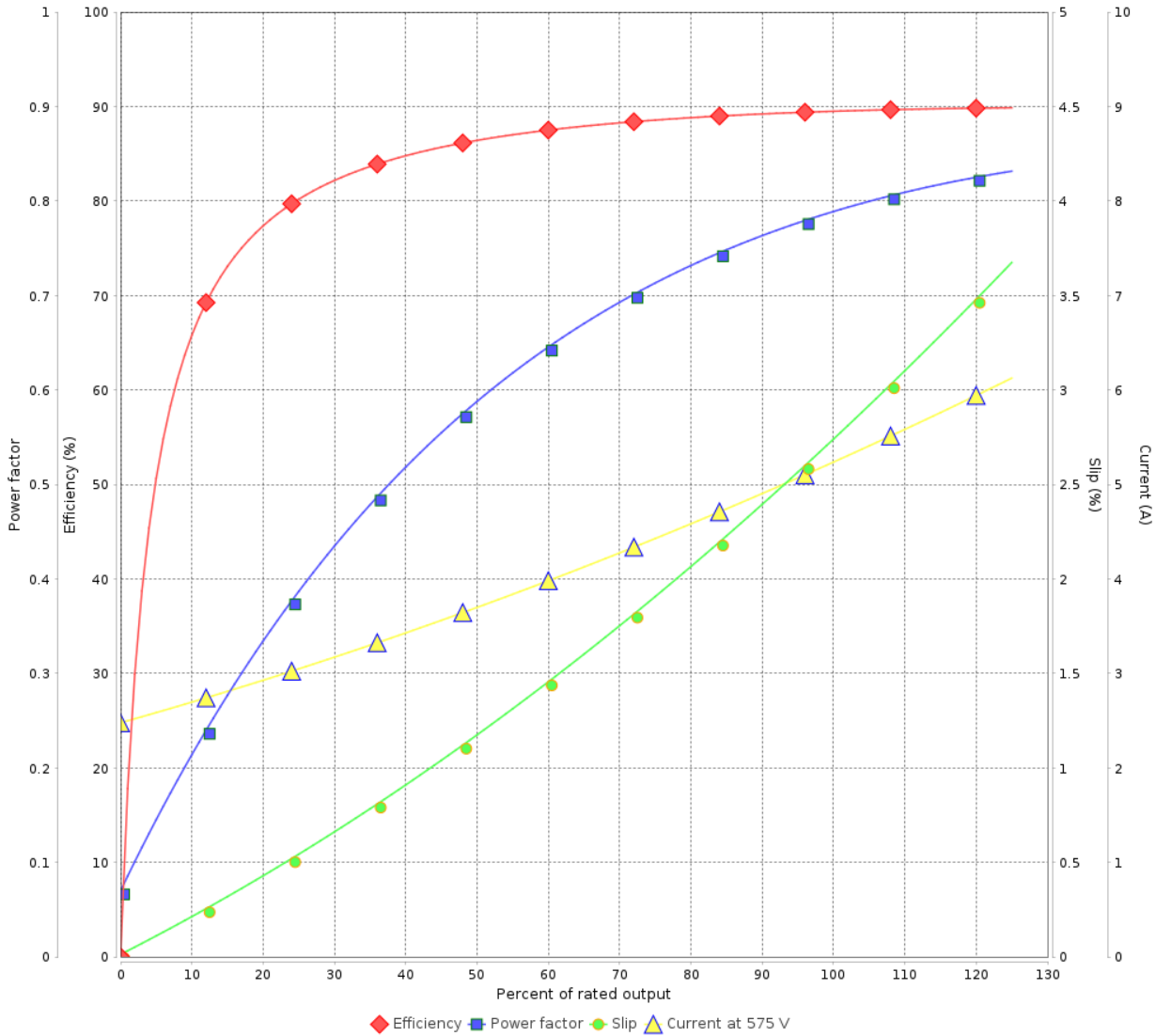
Three Phase Induction Motor - Squirrel Cage



Customer :

Product line : W21 In Line Extra Thrust NEMA Premium Efficiency Three-Phase Product code : 15137481

LOAD PERFORMANCE CURVE



Performance : 575 V 60 Hz 4P

Rated current	: 5.25 A	Moment of inertia (J)	: 0.0156 kgm ²
LRC	: 7.1	Duty cycle	: Cont.(S1)
Rated torque	: 2.07 kgfm	Insulation class	: F
Locked rotor torque	: 250 %	Service factor	: 1.25
Breakdown torque	: 330 %	Temperature rise	: 80 K
Rated speed	: 1750 rpm	Design	: B

Rev.	Changes Summary	Performed	Checked	Date
Performed by			Page	Revision
Checked by			2 / 2	
Date	29/10/2024			

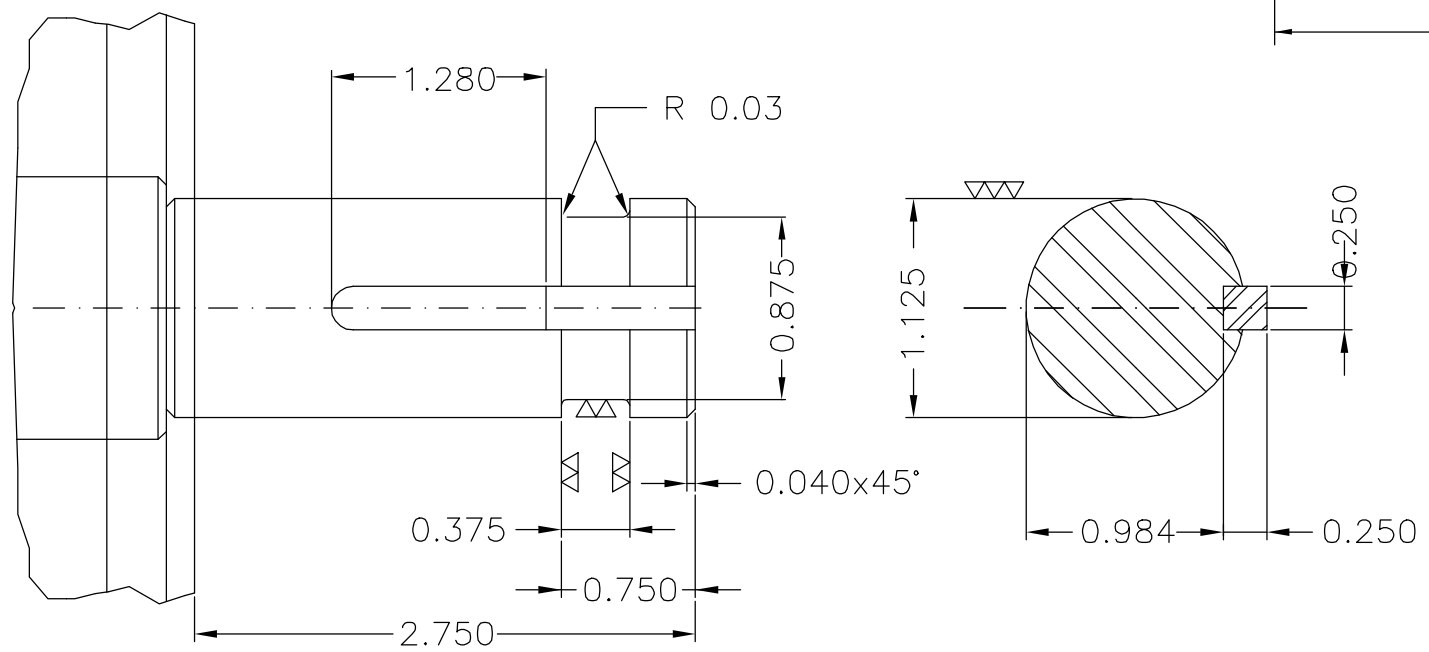
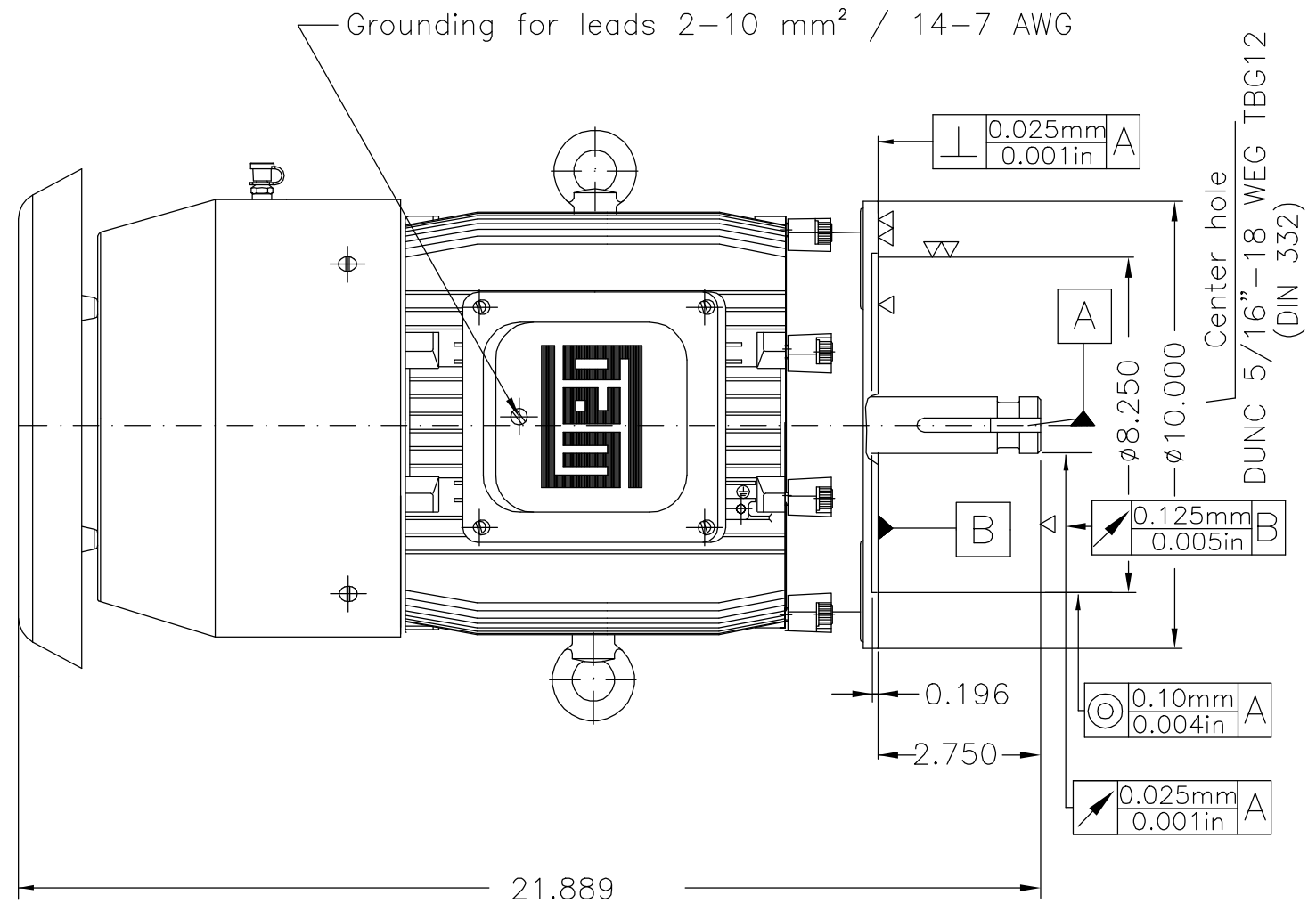
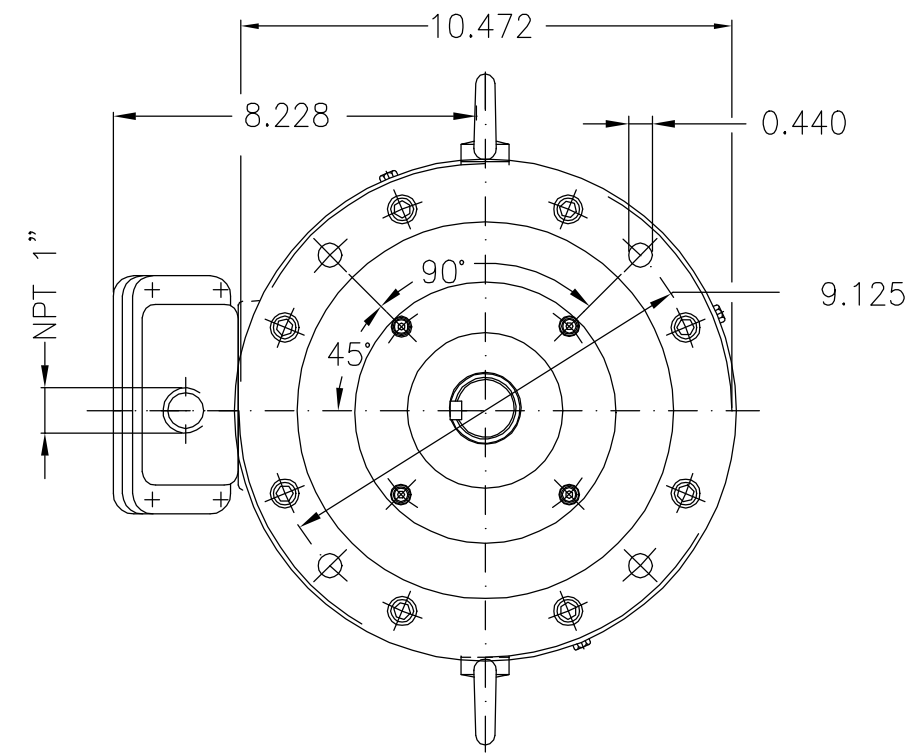
EIXO/SHAFT	
PADRÃO/STANDARD	
OPCIONAL/OPTIONAL	
ESPECIAL/SPECIAL	X

Dimensões em polegada
Dimensions in inches

CERTIFIED WEG MOTORES
Certified document.
Not subject to changes.

THIS IS AN UPDATED REVISION, THE PREVIOUS ONE MUST BE DISREGARDED.

ATENÇÃO/ATTENTION
MOTOR DEVE SER LIGADO APENAS NA POSIÇÃO VERTICAL
MOTOR MUST BE ENERGIZED ONLY IN THE VERTICAL POSITION



Cor RAL 5009 / Color RAL 5009
Plano de pintura 207A / Painting plan 207A
Forma construtiva NEMA W-6 / Mounting NEMA W-6
Forma construtiva V1 / Mounting V1
V.J. PAMENSKY CANADA INC.

500002148791	ALT CONFORME 418229042	CLAUDEMIRR	JACKSONDC	JACKSONDC	14.06.2022	01			
500001660035	DOCUMENTO NOVO	NOERNBERG	CLEITONGS	CLEITONGS	02.10.2019	00			
ECM	LOC	SUMMARY OF MODIFICATIONS			EXECUTED	CHECKED	RELEASED	DATE	VER
EXECUTED	NOERNBERG		THREE-PHASE IN LINE EXTRA THRUST MOTOR			10007020501			
CHECKED	CLEITONGS		FRAME 184LP IP55 TEFC			000	01		
RELEASED	CLEITONGS								
REL DT	02.10.2019	WMO	Jaraguá do Sul	Product Engineering	SHEET	1 / 1			

5 HP 04 Poles 60Hz 415753389/0