

# DATA SHEET

## Single Phase Induction Motor - Squirrel Cage



Customer : V.J. PAMENSKY CANADA INC.

Product line : W01 - TEFC - Premium Efficiency (DOE) Product code : 19109622

Frame	: W56	Locked rotor time	: 26 s (hot) 47 s (cold)
Output	: 0.25 HP (0.18 kW)	Temperature rise	: 80 K
Poles	: 4	Duty cycle	: S1
Frequency	: 60 Hz	Ambient temperature	: -20 °C to +40 °C
Rated voltage	: 115/208-230 V	Altitude	: 3280 ft
Rated current	: 2.90/1.60-1.45 A	Protection degree	: IP55
L. R. Amperes	: 21.8/12.0-10.9 A	Cooling method	: IC411 - TEFC
LRC	: 7.5	Mounting	: F-1/B3R(D)
No load current	: 2.00/0.862-1.00 A	Rotation <sup>1</sup>	: Both
Rated speed	: 1745 rpm	Noise level <sup>2</sup>	: 52.0 dB(A)
Slip	: 3.06 %	Vibration class	: A
Rated torque	: 0.745 ft.lb	Starting method	: Direct On Line
Locked rotor torque	: 280 %	Approx. weight <sup>3</sup>	: 18.3 lb
Pull up torque	: 235 %	Painting plan	: 207N
Breakdown torque	: 290 %	Color	: MUNSELL N 1 - MATTE
Insulation class	: F	Design	: N
Service factor	: 1.15		
Moment of inertia (J)	: 0.0403 sq.ft.lb		

Output	50%	75%	100%	Load type	: -
Efficiency (%)	57.5	64.0	70.0	Load torque	: -
Power Factor	0.64	0.71	0.77	Load inertia (J=GD <sup>2</sup> /4)	: -

Bearing type	Drive end 6203-ZZ	Non drive end 6202-ZZ	Foundation loads	
Lubrication interval	-	-	Max. traction	: -
Lubricant amount	-	-	Max. compression	: -
Lubricant type	MOBIL POLYREX EM			

Notes  
See notes on page 2.

This revision replaces and cancel the previous one, which must be eliminated.  
(1) Looking the motor from the shaft end.  
(2) Measured at 1m and with tolerance of +3dB(A).  
(3) Approximate weight, subject to be changed after manufacturing process.

These are average values based on tests with sinusoidal power supply, subject to the tolerances stipulated in NEMA MG 1-12.

Rev.	Changes Summary		Rev.	Checked	Date
Performed by	farazq			1853283753	
Checked by	AUTOMATICO			Page	Rev.
Date	27/05/2026			1 / 2	0

# DATA SHEET

## Single Phase Induction Motor - Squirrel Cage



Customer : V.J. PAMENSKY CANADA INC.

Product line : W01 - TEFC - Premium Efficiency (DOE) Product code : 19109622

Thermal protection ID	Application	Type	Quantity	Sensing Temperature
-----------------------	-------------	------	----------	---------------------

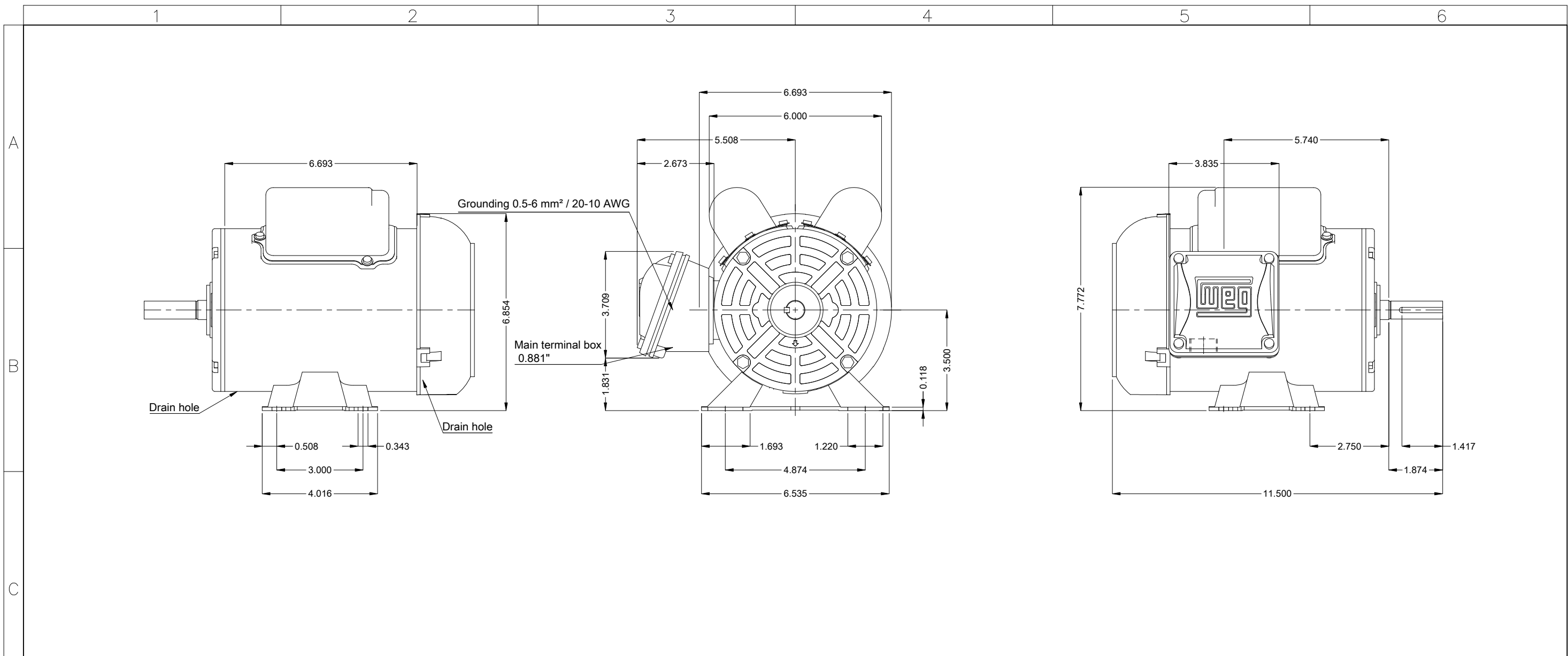
Notes

Standards	Specification : MG1 - Part 10	Vibration : MG1 - Part 7
	Test : MG1 - Part 12	Tolerance : MG1 - Part 12
	Noise : MG1 - Part 9	

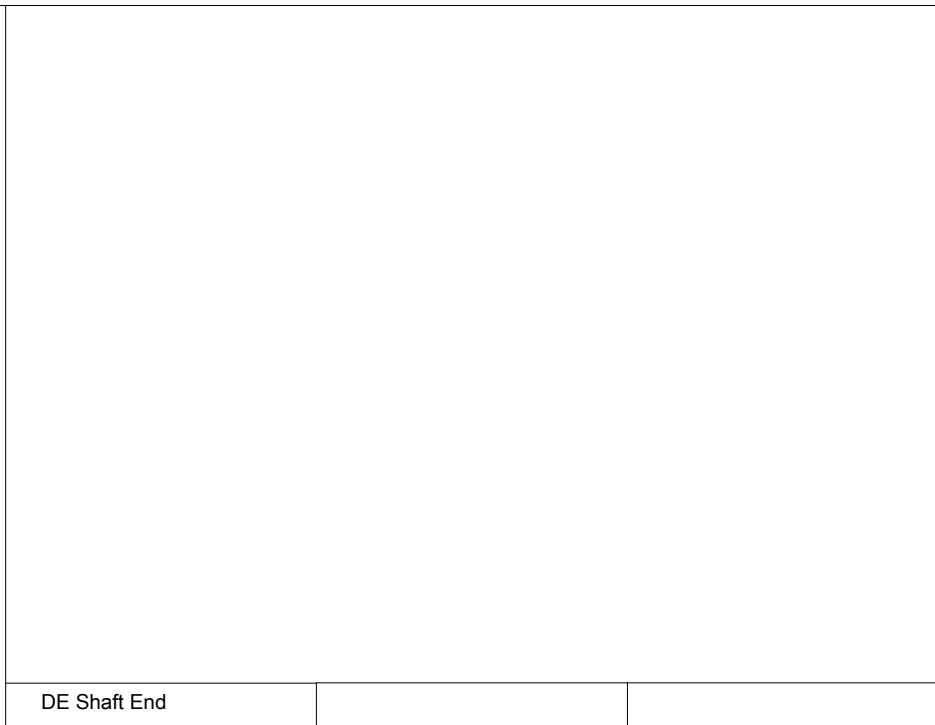
This revision replaces and cancel the previous one, which must be eliminated.  
 (1) Looking the motor from the shaft end.  
 (2) Measured at 1m and with tolerance of +3dB(A).  
 (3) Approximate weight, subject to be changed after manufacturing process.

These are average values based on tests with sinusoidal power supply, subject to the tolerances stipulated in NEMA MG 1-12.

Rev.	Changes Summary	Rev.	Checked	Date
Performed by	farazq	1853283753		
Checked by	AUTOMATICO	Page	Rev.	
Date	27/05/2026	2 / 2	0	



Reinforce the foot with 2 mig welding spots  
 Color Munsell N 1 matte black  
 Painting plan 207N  
 Mounting MARKET F-1/B3R(D)  
 Mounting F-1/B3R(D)



0.25 HP 04 Poles 60 Hz A

Scale 2 : 7

ECM	LOC	SUMMARY OF MODIFICATIONS	EXECUTED	CHECKED	RELEASED	DATE	VER
EXECUTED	HYBRISUSER	SINGLE PH. MOTOR ROLLED STEEL PREM. EFF.					
CHECKED		FRAME W56 IP55 TEFC					
RELEASED							
REL. DATE							

HYBRISUSER 00  
**PREVIEW**  
 WDD 00  
 SHEET 1 / 1

