

# DATA SHEET

## Three Phase Induction Motor - Squirrel Cage



Customer : V.J. PAMENSKY CANADA INC.

Product line : Special Motor

Product code : 13237783

Frame	: 182/4TZ	Cooling method	: IC418 - TEAO
Insulation class	: F	Mounting	: F-3/B3T
Duty cycle	: S1	Rotation <sup>1</sup>	: Counter clockwise
Ambient temperature	: -20 °C to +40 °C	Starting method	: Direct On Line
Altitude	: 3280 ft	Approx. weight <sup>3</sup>	: 59.5 lb
Protection degree	: IP55	Moment of inertia (J)	: 0.0000 sq.ft.lb
Design	: B		

Output	3 HP (2.2 kW)	4.5 HP (3.3 kW)	
Poles	2	2	
Frequency	60 Hz	60 Hz	
Rated voltage	208-230/460 V	208-230/460 V	
Rated current	9.45-8.54/4.27 A	12.5-11.3/5.67 A	
L. R. Amperes	104-93.9/47.0 A	105-94.9/47.6 A	
LRC	11.0 x Code N	8.4 x Code K	
No load current	0.000-5.70/2.85 A	0.000-6.80/3.40 A	
Rated speed	3540 rpm	3510 rpm	
Slip	1.67 %	2.50 %	
Rated torque	4.45 ft.lb	6.73 ft.lb	
Locked rotor torque	380.0 %	250.0 %	
Pull up torque	320.0 %	210.0 %	
Breakdown torque	550.0 %	380.0 %	
Service factor	1.00	1.00	
Temperature rise	105 K	105 K	
Locked rotor time (hot)	10 s	10 s	
Locked rotor time (cold)	18 s	18 s	
Efficiency (%)	50%	79.8	83.9
	75%	84.2	86.4
	100%	86.2	86.9
Power Factor	50%	0.53	0.74
	75%	0.66	0.84
	100%	0.75	0.84

Bearing type	Drive end	Non drive end	Foundation loads
	6206-ZZ	6205-ZZ	
Lubrication interval	-	-	Max. compression :
Lubricant amount	-	-	Load type :-
Lubricant type	MOBIL POLYREX EM		Load torque :-
			Load inertia (J=GD <sup>2</sup> /4) :-

### Notes

See notes on page 2.

This revision replaces and cancel the previous one, which must be eliminated.

- (1) Looking the motor from the shaft end.
- (2) Measured at 1m and with tolerance of +3dB(A).
- (3) Approximate weight, subject to be changed after manufacturing process.

These are average values based on tests with sinusoidal power supply, subject to the tolerances stipulated in NEMA MG 1-12.

Rev.	Changes Summary	Rev.	Checked	Date
Performed by	farazq		1859380766	
Checked by	AUTOMATICO		Page	Rev.
Date	11/06/2026		1 / 2	0

# DATA SHEET

## Three Phase Induction Motor - Squirrel Cage



Customer : V.J. PAMENSKY CANADA INC.

Product line : Special Motor

Product code : 13237783

### Thermal protection

ID	Application	Type	Quantity	Sensing Temperature
1	Winding	Thermostat - 2 wires	1 x Phase	155°C

### Notes

Minimum Air flow @ 3.0 HP - 17.9 m/s  
Minimum Air flow @ 4.5 HP - 18.4 m/s

Standards	Specification	: MG1 - Part 10	Vibration	: MG1 - Part 7
	Test	: MG1 - Part 12	Tolerance	: MG1 - Part 12
	Noise	: MG1 - Part 9		

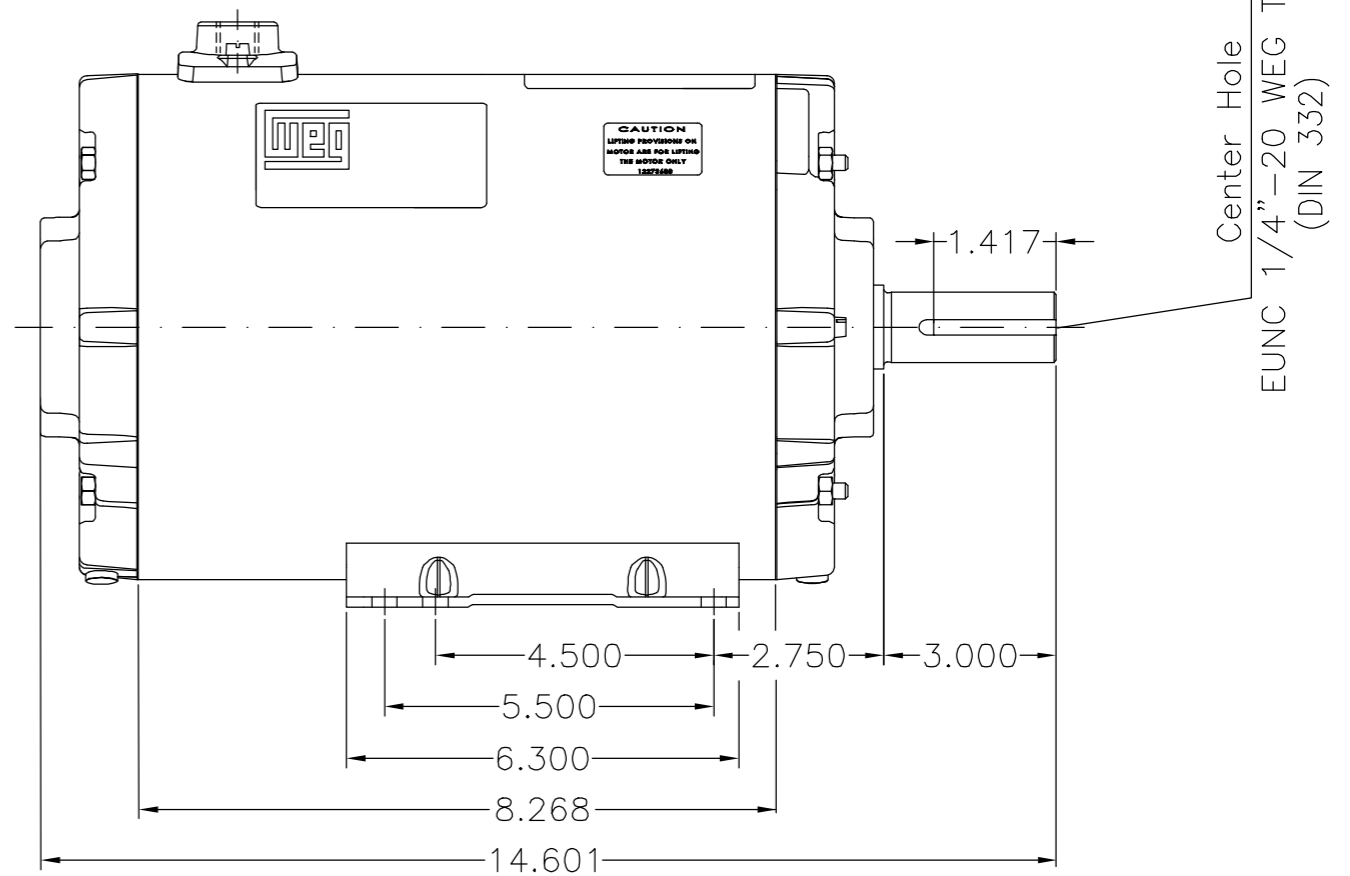
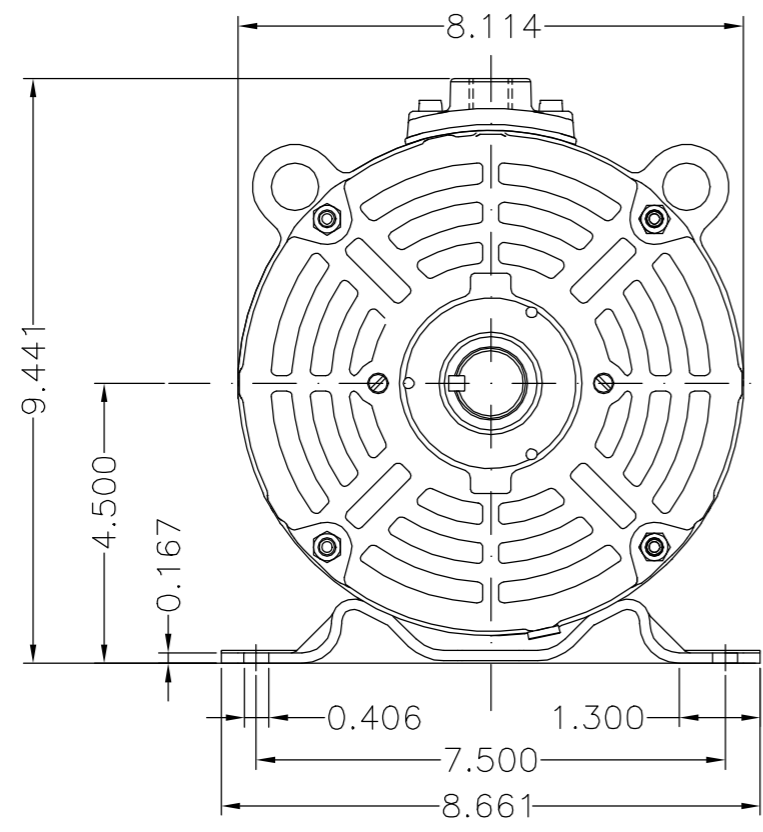
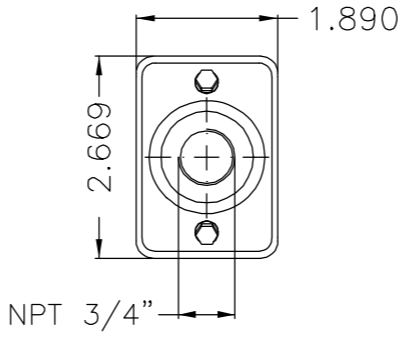
This revision replaces and cancel the previous one, which must be eliminated.  
(1) Looking the motor from the shaft end.  
(2) Measured at 1m and with tolerance of +3dB(A).  
(3) Approximate weight, subject to be changed after manufacturing process.

These are average values based on tests with sinusoidal power supply, subject to the tolerances stipulated in NEMA MG 1-12.

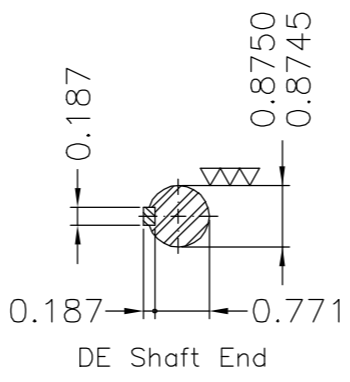
Rev.	Changes Summary	Rev.	Checked	Date
Performed by	farazq	1859380766		
Checked by	AUTOMATICO	Page	Rev.	
Date	11/06/2026	2 / 2	0	

EIXO/SHAFT	
PADRÃO/STANDARD	Dimensões em polegadas
OPCIONAL/OPTIONAL	Dimensions in inches
ESPECIAL/SPECIAL	X

THIS IS AN UPDATED REVISION, THE PREVIOUS ONE MUST BE DISREGARDED.



Center Hole  
EUNC 1/4"-20 WEG TBG253  
(DIN 332)



Comprimento dos cabos de acessórios 30+2" a partir da base / Accessories cables length 30+2" from the base  
 Comprimento do cabo de aterramento 30+2" a partir da base / Grounding lead 30+2" length from base  
 Etiqueta sobressalente sem logotipos de certificação e sem número de série fornecida em avulso / Spare label without certification logo and without serial number supplied loose  
 Comprimento dos cabos de ligação 30+2" a partir da base / Connection leads 30+2" length from base  
 Forma construtiva B3T / Mounting B3T

**WEG ELECTRIC CORP.**

500001089933		CORRIGIDO CARÇAÇA	PATRICKL		RUBENSM	23.09.2015	04
500001086698		ALT.DISTÂNCIA FUNDO CHAVETA	ALESOMZ		MENSOR	21.09.2015	03
ECM	LOC	SUMMARY OF MODIFICATIONS	EXECUTED	CHECKED	RELEASED	DATE	VER
EXECUTED	PATRICKL	THREE PHASE ROLLED STEEL MOTOR FRAME 182/4TZ IP55 (TEAO)			10003443534		
CHECKED					000	04	
RELEASED	EMERSONRH						
REL DT	16.03.2015	WMO	JARAGUA DO SUL	ENGENHARIA DE PRODUTO	SHEET	1 / 1	

3/4.5 HP 02 Poles 60Hz 413759944

UNCONTROLLED COPY RELEASED ZME A3