

# DATA SHEET

## Three Phase Induction Motor - Squirrel Cage



Customer :

Product line : W22 NEMA Premium Efficiency Three-Phase Product code : 11697248

Frame	: 364/5TSC	Locked rotor time	: 18s (cold) 10s (hot)
Output	: 75 HP (55 kW)	Temperature rise	: 80 K
Poles	: 2	Duty cycle	: Cont.(S1)
Frequency	: 60 Hz	Ambient temperature	: -20°C to +40°C
Rated voltage	: 575 V	Altitude	: 1000 m.a.s.l.
Rated current	: 65.5 A	Protection degree	: IP55
L. R. Amperes	: 439 A	Cooling method	: IC411 - TEFC
LRC	: 6.7x(Code G)	Mounting	: F-1
No load current	: 14.4 A	Rotation <sup>1</sup>	: Both (CW and CCW)
Rated speed	: 3555 rpm	Noise level <sup>2</sup>	: 79.0 dB(A)
Slip	: 1.25 %	Starting method	: Direct On Line
Rated torque	: 15.3 kgfm	Approx. weight <sup>3</sup>	: 402 kg
Locked rotor torque	: 200 %		
Breakdown torque	: 250 %		
Insulation class	: F		
Service factor	: 1.25		
Moment of inertia (J)	: 0.5023 kgm <sup>2</sup>		
Design	: B		

Output	50%	75%	100%	Foundation loads	
Efficiency (%)	92.4	93.6	93.6	Max. traction	: 229 kgf
Power Factor	0.83	0.88	0.90	Max. compression	: 631 kgf

Losses at normative operating points (speed;torque), in percentage of rated output power

P1 (0,9;1,0)	P2 (0,5;1,0)	P3 (0,25;1,0)	P4 (0,9;0,5)	P5 (0,5;0,5)	P6 (0,5;0,25)	P7 (0,25;0,25)
6.4	4.8	4.5	3.2	1.8	1.1	0.6

	Drive end	Non drive end
Bearing type	: 6314 C3	6314 C3
Sealing	: Oil Seal	Oil Seal
Lubrication interval	: 4000 h	4000 h
Lubricant amount	: 27 g	27 g
Lubricant type	Mobil Polyrex EM	

Notes

This revision replaces and cancel the previous one, which must be eliminated.

- (1) Looking the motor from the shaft end.
- (2) Measured at 1m and with tolerance of +3dB(A).
- (3) Approximate weight subject to changes after manufacturing process.
- (4) At 100% of full load.

These are average values based on tests with sinusoidal power supply, subject to the tolerances stipulated in NEMA MG-1.

Rev.	Changes Summary	Performed	Checked	Date
Performed by				
Checked by				
Date	19/10/2024		Page 1 / 2	Revision

# LOAD PERFORMANCE CURVE

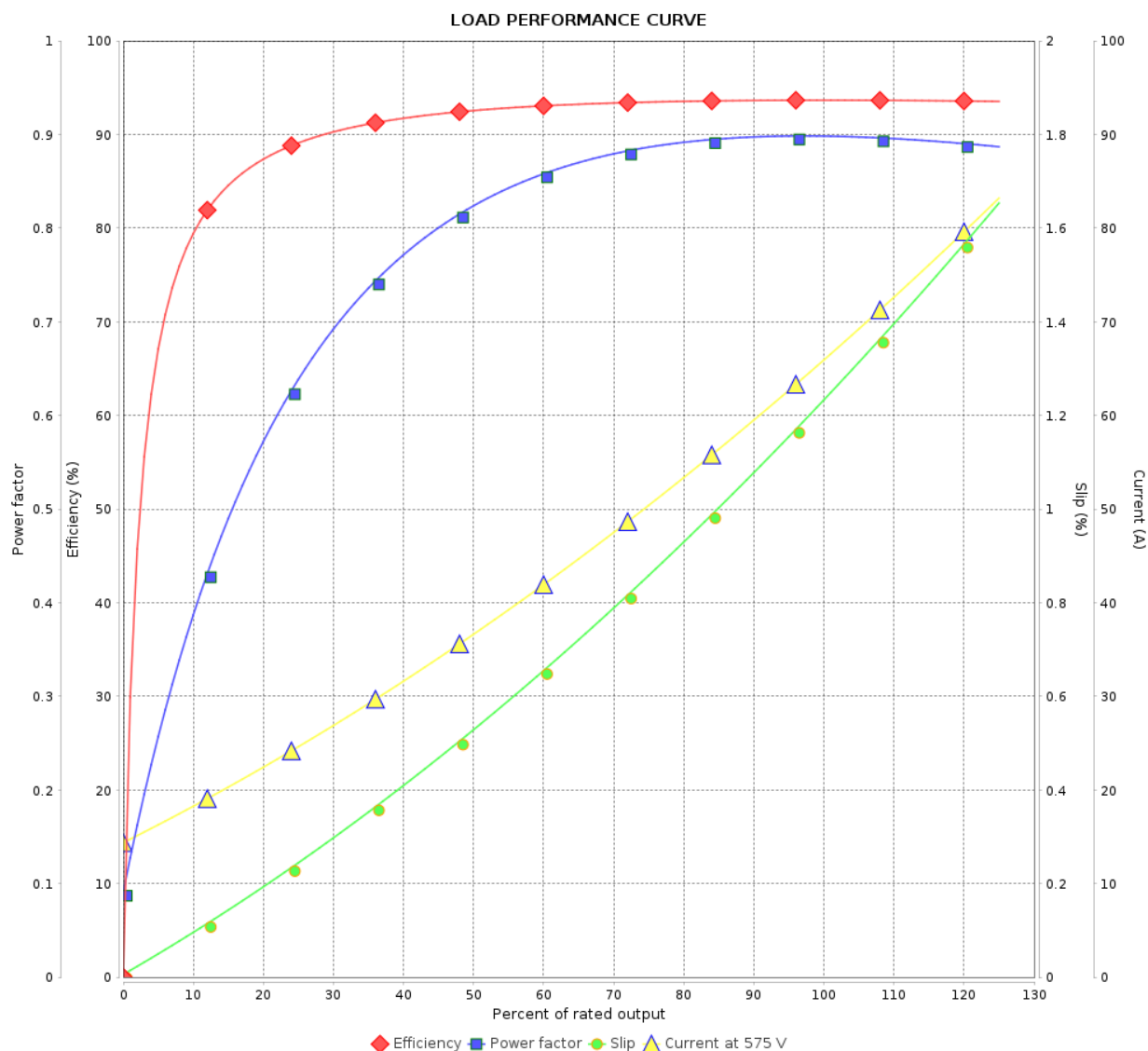
## Three Phase Induction Motor - Squirrel Cage



Customer :

Product line : W22 NEMA Premium Efficiency  
Three-Phase

Product code : 11697248

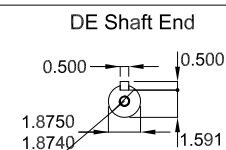
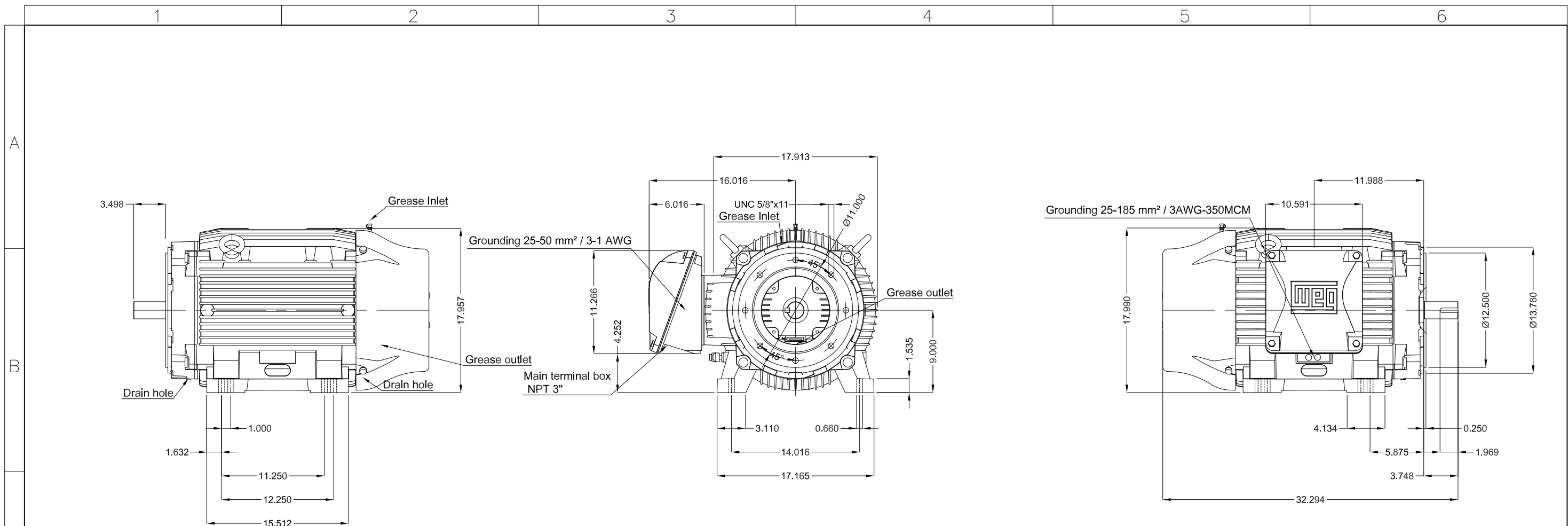


Performance : 575 V 60 Hz 2P

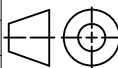

Rated current : 65.5 A  
LRC : 6.7  
Rated torque : 15.3 kgfm  
Locked rotor torque : 200 %  
Breakdown torque : 250 %  
Rated speed : 3555 rpm

Moment of inertia (J) : 0.5023 kgm<sup>2</sup>  
Duty cycle : Cont.(S1)  
Insulation class : F  
Service factor : 1.25  
Temperature rise : 80 K  
Design : B

Rev.	Changes Summary		Performed	Checked	Date
Performed by				Page	Revision
Checked by				2 / 2	
Date					



DUNC 3/4"-10 WEG WPR-7339

75 HP    02 Poles    60 Hz											A
					HYBRISUSER						00
ECM		LOC	SUMMARY OF MODIFICATIONS				EXECUTED	CHECKED	RELEASED	DATE	VER
EXECUTED	HYBRISUSER		THREE PH. MOTOR W22 NEMA PREM. EFF. FRAME 364/5TSC IP55 TEFC					PREVIEW WDD   00			
CHECKED											
RELEASED											
REL. DATE											
					SHEET		/				