

DATA SHEET

Three Phase Induction Motor - Squirrel Cage



Customer :				
Product line : Three-Phase		Product code : 14776904		
Frame : 56C Insulation class : F Duty cycle : Cont.(S1) Ambient temperature : -20°C to +40°C Altitude : 1000 m.a.s.l.		Cooling method : IC01 - ODP Mounting : F-1 Rotation ¹ : Both (CW and CCW) Starting method : Direct On Line Approx. weight ³ : 7.7 kg Moment of inertia (J) : 0.0016 kgm ²		
Output [HP]	0.5			
Poles	2			
Frequency [Hz]	60			
Rated voltage [V]	575			
Rated current [A]	0.649			
L. R. Amperes [A]	4.02			
LRC [A]	6.2x(Code K)			
No load current [A]	0.360			
Rated speed [RPM]	3490			
Slip [%]	3.06			
Rated torque [kgfm]	0.104			
Locked rotor torque [%]	229			
Breakdown torque [%]	280			
Service factor	1.25			
Temperature rise	80 K			
Locked rotor time	70s (cold) 39s (hot)			
Noise level ²	62.0 dB(A)			
Efficiency (%)	25%			
	50%	64.0		
	75%	70.0		
	100%	73.4		
Power Factor	25%			
	50%	0.57		
	75%	0.69		
	100%	0.78		
Bearing type : <u>Drive end</u> 6203 ZZ <u>Non drive end</u> 6202 ZZ Sealing : Without Without Bearing Seal Bearing Seal Lubrication interval : - - Lubricant amount : - - Lubricant type : Mobil Polyrex EM		Foundation loads Max. traction : 5 kgf Max. compression : 13 kgf		
Notes				
This revision replaces and cancel the previous one, which must be eliminated. (1) Looking the motor from the shaft end. (2) Measured at 1m and with tolerance of +3dB(A). (3) Approximate weight subject to changes after manufacturing process. (4) At 100% of full load.		These are average values based on tests with sinusoidal power supply, subject to the tolerances stipulated in NEMA MG-1.		
Rev.	Changes Summary		Performed	Checked
Performed by			Page 1 / 2	Revision
Checked by				
Date	17/05/2022			

LOAD PERFORMANCE CURVE

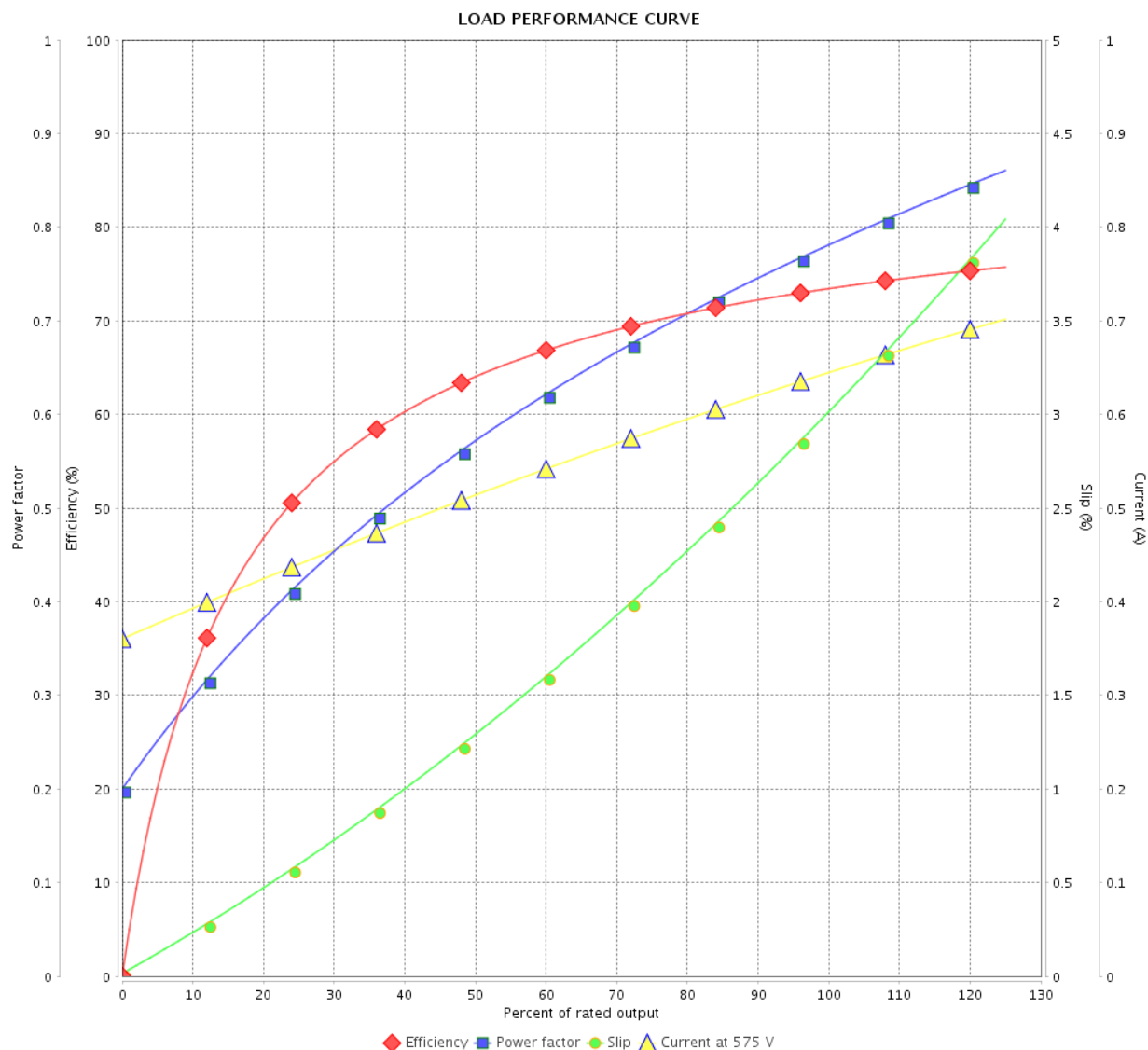
Three Phase Induction Motor - Squirrel Cage



Customer :

Product line : Three-Phase

Product code : 14776904

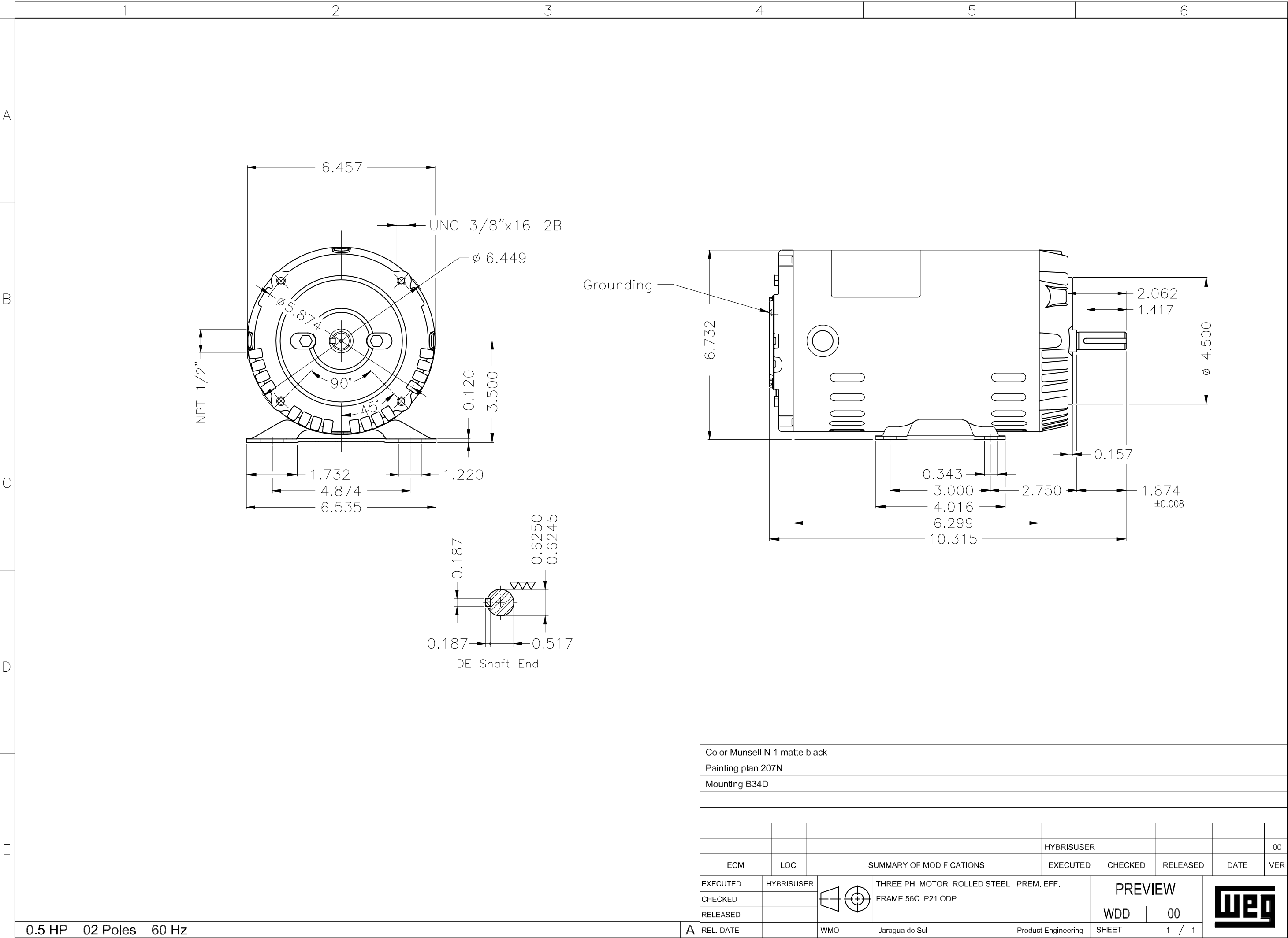


Performance : 575 V 60 Hz 2P

Rated current : 0.649 A
 LRC : 6.2
 Rated torque : 0.104 kgfm
 Locked rotor torque : 229 %
 Breakdown torque : 280 %
 Rated speed : 3490 rpm

Moment of inertia (J) : 0.0016 kgm²
 Duty cycle : Cont.(S1)
 Insulation class : F
 Service factor : 1.25
 Temperature rise : 80 K

Rev.	Changes Summary	Performed	Checked	Date
Performed by		<div>Page 2 / 2</div> <div>Revision</div>		
Checked by				
Date	17/05/2022			



Color Munsell N 1 matte black									
Painting plan 207N									
Mounting B34D									