

# DATA SHEET

## Three Phase Induction Motor - Squirrel Cage



Customer :

Product line : W22 NEMA Premium Efficiency Three-Phase Product code : 12751349

Frame	: 364/5TC	Locked rotor time	: 32s (cold) 18s (hot)
Output	: 50 HP (37 kW)	Temperature rise	: 80 K
Poles	: 6	Duty cycle	: Cont.(S1)
Frequency	: 60 Hz	Ambient temperature	: -20°C to +40°C
Rated voltage	: 575 V	Altitude	: 1000 m.a.s.l.
Rated current	: 45.9 A	Protection degree	: IP55
L. R. Amperes	: 294 A	Cooling method	: IC411 - TEFC
LRC	: 6.4x(Code G)	Mounting	: F-1
No load current	: 16.0 A	Rotation <sup>1</sup>	: Both (CW and CCW)
Rated speed	: 1183 rpm	Noise level <sup>2</sup>	: 66.0 dB(A)
Slip	: 1.42 %	Starting method	: Direct On Line
Rated torque	: 30.7 kgfm	Approx. weight <sup>3</sup>	: 413 kg
Locked rotor torque	: 200 %		
Breakdown torque	: 240 %		
Insulation class	: F		
Service factor	: 1.25		
Moment of inertia (J)	: 1.36 kgm <sup>2</sup>		
Design	: B		

Output	50%	75%	100%	Foundation loads	
Efficiency (%)	93.6	94.1	94.1	Max. traction	: 620 kgf
Power Factor	0.74	0.83	0.86	Max. compression	: 1033 kgf

Losses at normative operating points (speed;torque), in percentage of rated output power

P1 (0,9;1,0)	P2 (0,5;1,0)	P3 (0,25;1,0)	P4 (0,9;0,5)	P5 (0,5;0,5)	P6 (0,5;0,25)	P7 (0,25;0,25)
6.2	5.2	4.6	2.8	1.9	1.2	0.8

	Drive end	Non drive end
Bearing type	: 6314 C3	: 6314 C3
Sealing	: Oil Seal	: Oil Seal
Lubrication interval	: 17000 h	: 17000 h
Lubricant amount	: 27 g	: 27 g
Lubricant type	Mobil Polyrex EM	

Notes

This revision replaces and cancel the previous one, which must be eliminated.

- (1) Looking the motor from the shaft end.
- (2) Measured at 1m and with tolerance of +3dB(A).
- (3) Approximate weight subject to changes after manufacturing process.
- (4) At 100% of full load.

These are average values based on tests with sinusoidal power supply, subject to the tolerances stipulated in NEMA MG-1.

Rev.	Changes Summary	Performed	Checked	Date
Performed by				
Checked by				
Date	19/10/2024		Page 1 / 2	Revision

# LOAD PERFORMANCE CURVE

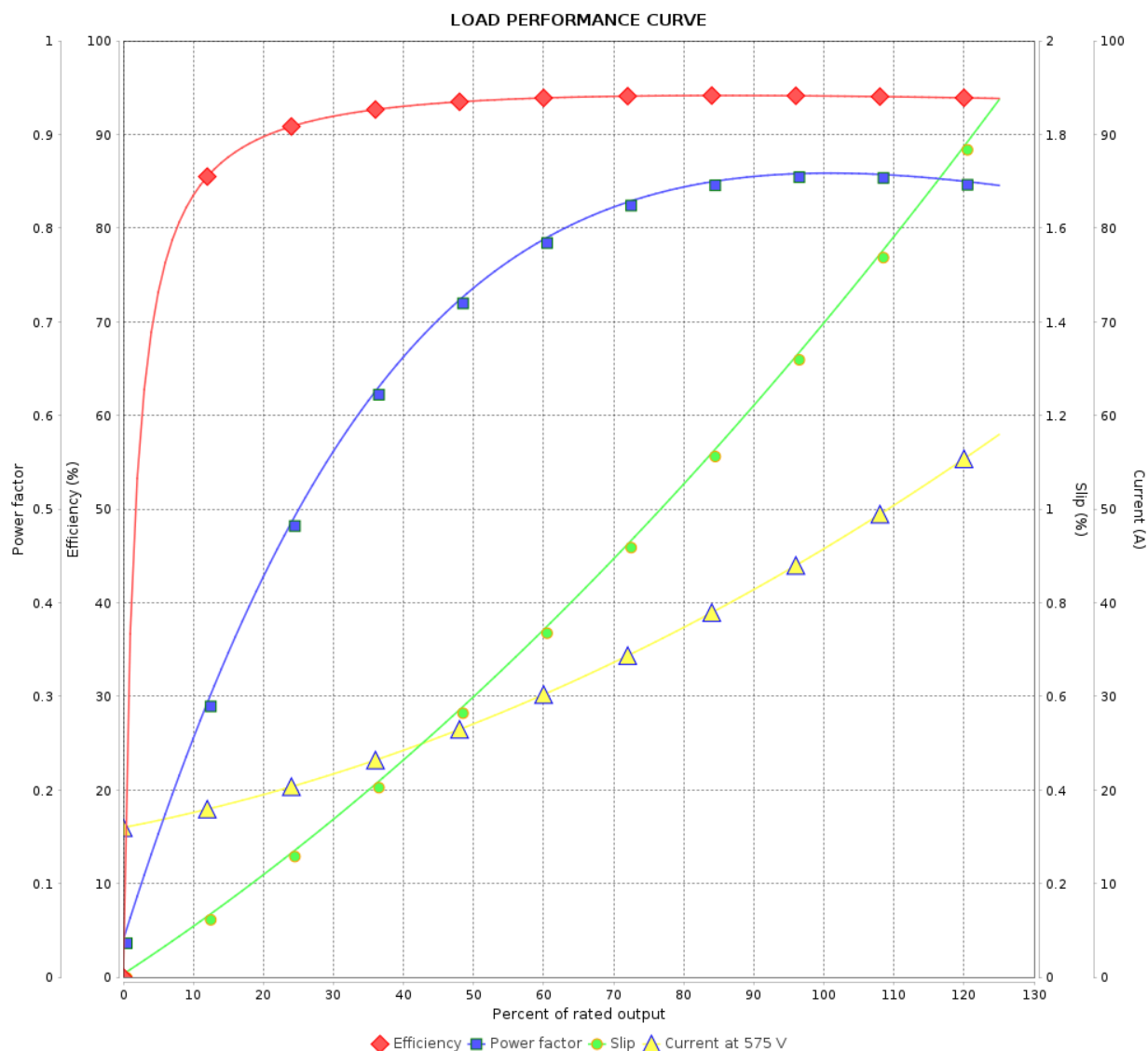
## Three Phase Induction Motor - Squirrel Cage



Customer :

Product line : W22 NEMA Premium Efficiency  
Three-Phase

Product code : 12751349

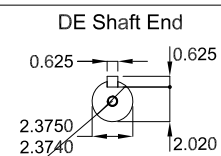
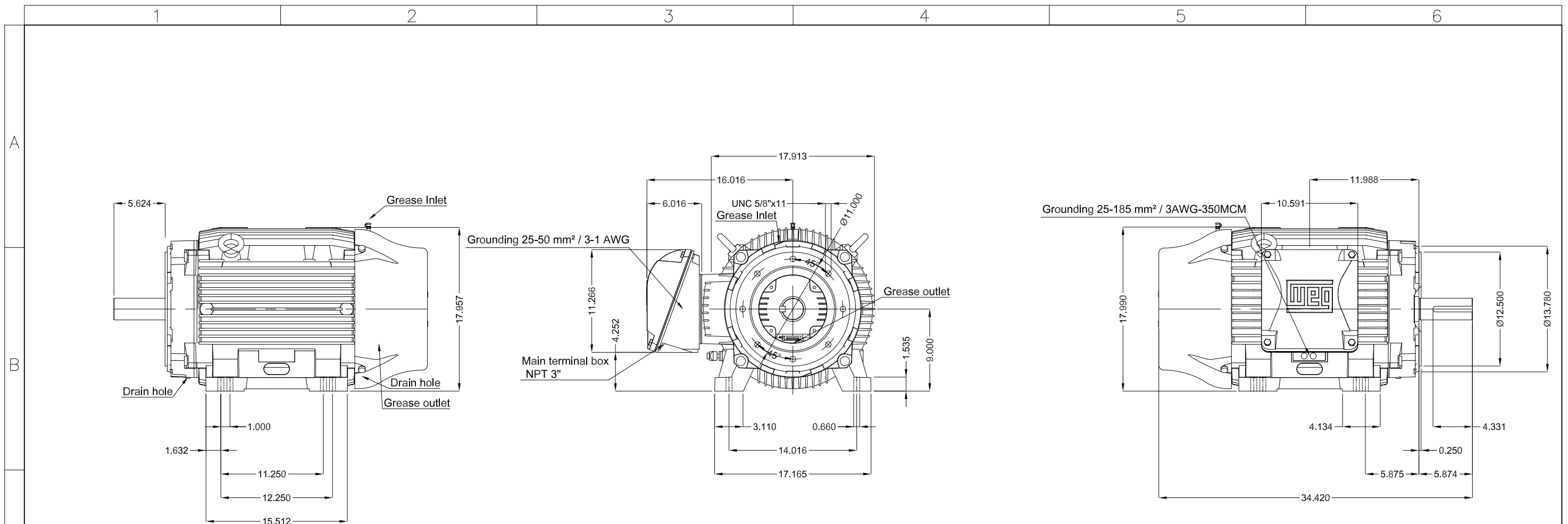


Performance : 575 V 60 Hz 6P

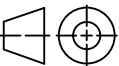

Rated current : 45.9 A  
LRC : 6.4  
Rated torque : 30.7 kgfm  
Locked rotor torque : 200 %  
Breakdown torque : 240 %  
Rated speed : 1183 rpm

Moment of inertia (J) : 1.36 kgm<sup>2</sup>  
Duty cycle : Cont.(S1)  
Insulation class : F  
Service factor : 1.25  
Temperature rise : 80 K  
Design : B

Rev.	Changes Summary		Performed	Checked	Date
Performed by				Page	Revision
Checked by				2 / 2	
Date					



DUNC 3/4"-10 WEG WPR-7339

50 HP    06 Poles    60 Hz										A
						HYBRISUSER				00
ECM	LOC	SUMMARY OF MODIFICATIONS				EXECUTED	CHECKED	RELEASED	DATE	VER
EXECUTED	HYBRISUSER		THREE PH. MOTOR W22 NEMA PREM. EFF. FRAME 364/5TC IP55 TEFC				<div> <div>PREVIEW</div> <div>WDD   00</div> </div>			
CHECKED										
RELEASED										
REL. DATE										
						SHEET		/		