

# DATA SHEET

## Single Phase Induction Motor - Squirrel Cage



Customer	:			
Product line	: Jet Pump - J type Single-Phase	Product code : 14733581		
Frame	: 56J	Cooling method : IC01 - ODP		
Insulation class	: F	Mounting : F-1		
Duty cycle	: Cont.(S1)	Rotation <sup>1</sup> : CCW		
Ambient temperature	: -20°C to +40°C	Starting method : Direct On Line		
Altitude	: 1000 m.a.s.l.	Approx. weight <sup>3</sup> : 15.6 kg		
Design	: L	Moment of inertia (J) : 0.0027 kgm <sup>2</sup>		
Output [HP]		1.5		
Poles		2		
Frequency [Hz]		60		
Rated voltage [V]		115/208-230		
Rated current [A]		12.4/6.86-6.20		
L. R. Amperes [A]		102/56.3-50.8		
LRC [A]		8.2x(Code J)		
No load current [A]		3.20/1.38-1.60		
Rated speed [RPM]		3500		
Slip [%]		2.78		
Rated torque [kgfm]		0.311		
Locked rotor torque [%]		260		
Breakdown torque [%]		270		
Service factor				
Temperature rise		80 K		
Locked rotor time		18s (cold) 10s (hot)		
Noise level <sup>2</sup>		58.0 dB(A)		
Efficiency (%)	25%			
	50%	73.0		
	75%	79.0		
	100%	81.5		
Power Factor	25%			
	50%	0.92		
	75%	0.95		
	100%	0.95		
Bearing type	: <u>Drive end</u> 6203 2RS <u>Non drive end</u> 6202 2RS	Foundation loads		
Sealing	: Without Bearing Seal Without Bearing Seal	Max. traction : 19 kgf		
Lubrication interval	: - -	Max. compression : 34 kgf		
Lubricant amount	: - -			
Lubricant type	: Mobil Polyrex EM			
Notes				
<p>This revision replaces and cancel the previous one, which must be eliminated.</p> <p>(1) Looking the motor from the shaft end.</p> <p>(2) Measured at 1m and with tolerance of +3dB(A).</p> <p>(3) Approximate weight subject to changes after manufacturing process.</p> <p>(4) At 100% of full load.</p>		<p>These are average values based on tests with sinusoidal power supply, subject to the tolerances stipulated in NEMA MG-1.</p>		
Rev.	Changes Summary	Performed	Checked	Date
Performed by				
Checked by			Page	Revision
Date	17/05/2022		1 / 2	

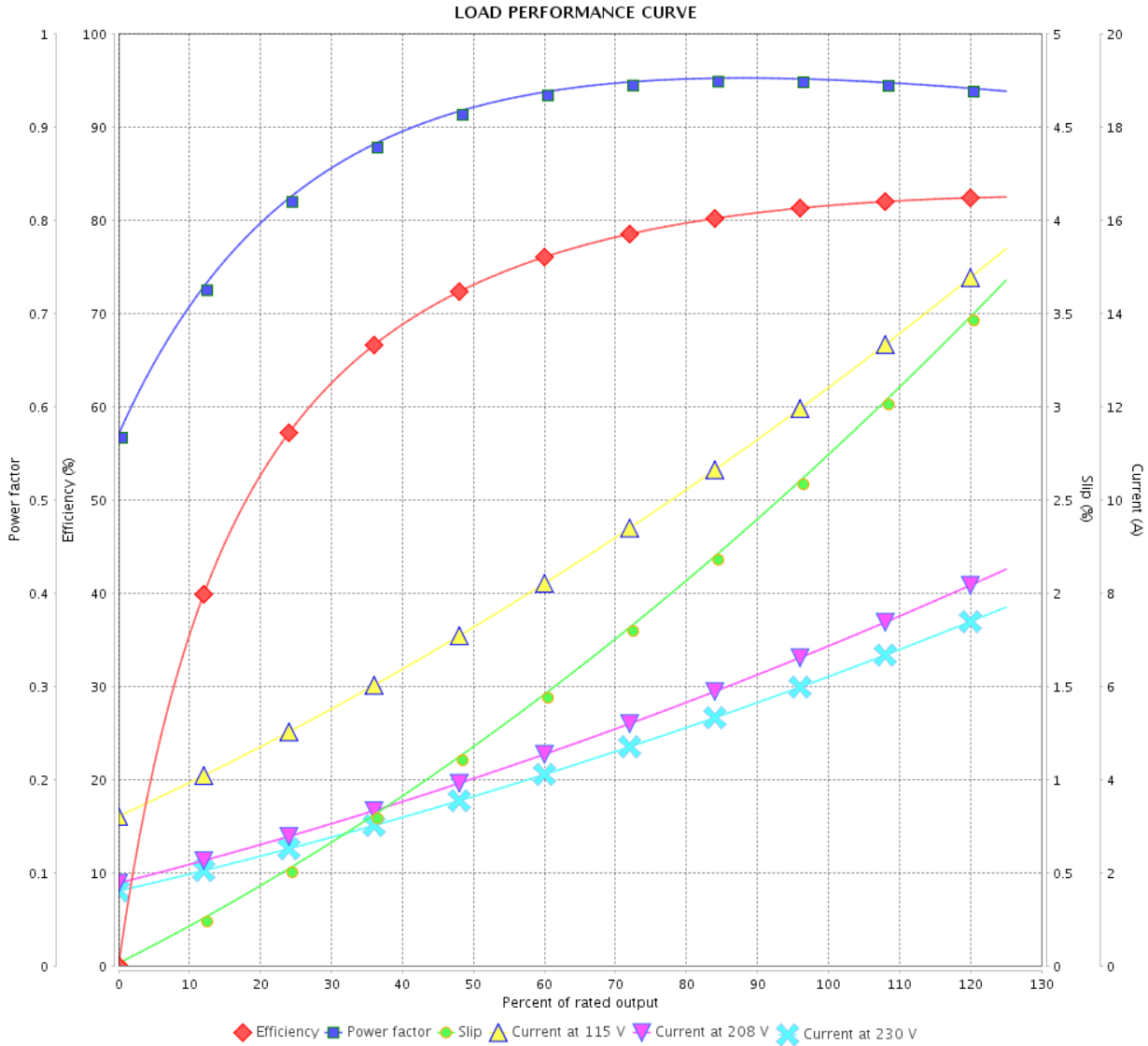
# LOAD PERFORMANCE CURVE

Single Phase Induction Motor - Squirrel Cage



Customer :

Product line : Jet Pump - J type Single-Phase Product code : 14733581



Performance : 115/208-230 V 60 Hz 2P

Rated current : 12.4/6.86-6.20 A  
 LRC : 8.2  
 Rated torque : 0.311 kgfm  
 Locked rotor torque : 260 %  
 Breakdown torque : 270 %  
 Rated speed : 3500 rpm

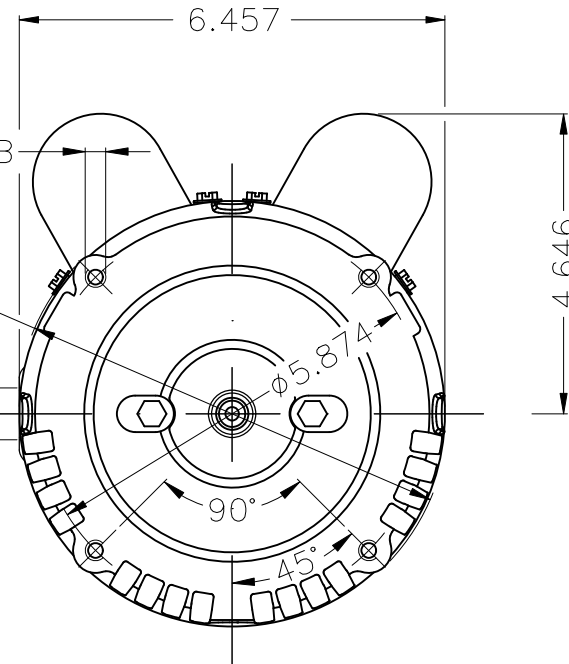
Moment of inertia (J) : 0.0027 kgm<sup>2</sup>  
 Duty cycle : Cont.(S1)  
 Insulation class : F  
 Service factor :  
 Temperature rise : 80 K  
 Design : L

Rev.	Changes Summary	Performed	Checked	Date
Performed by			Page 2 / 2	Revision
Checked by				
Date	17/05/2022			

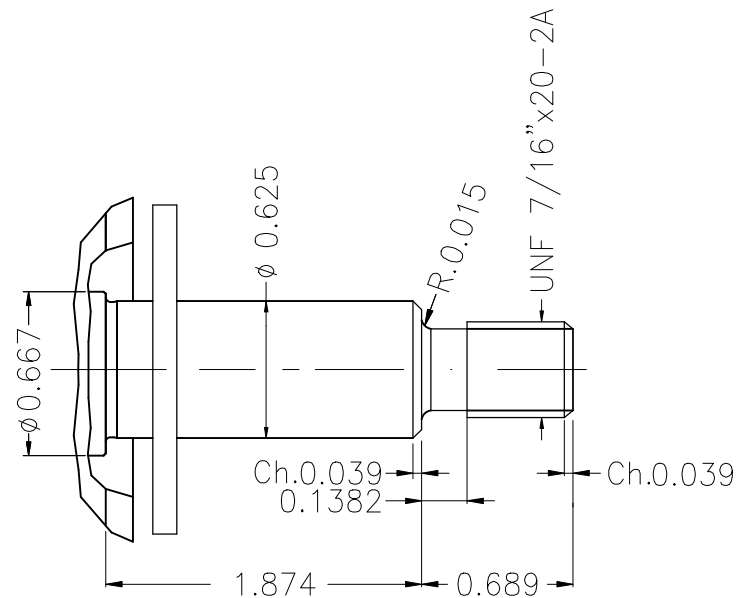
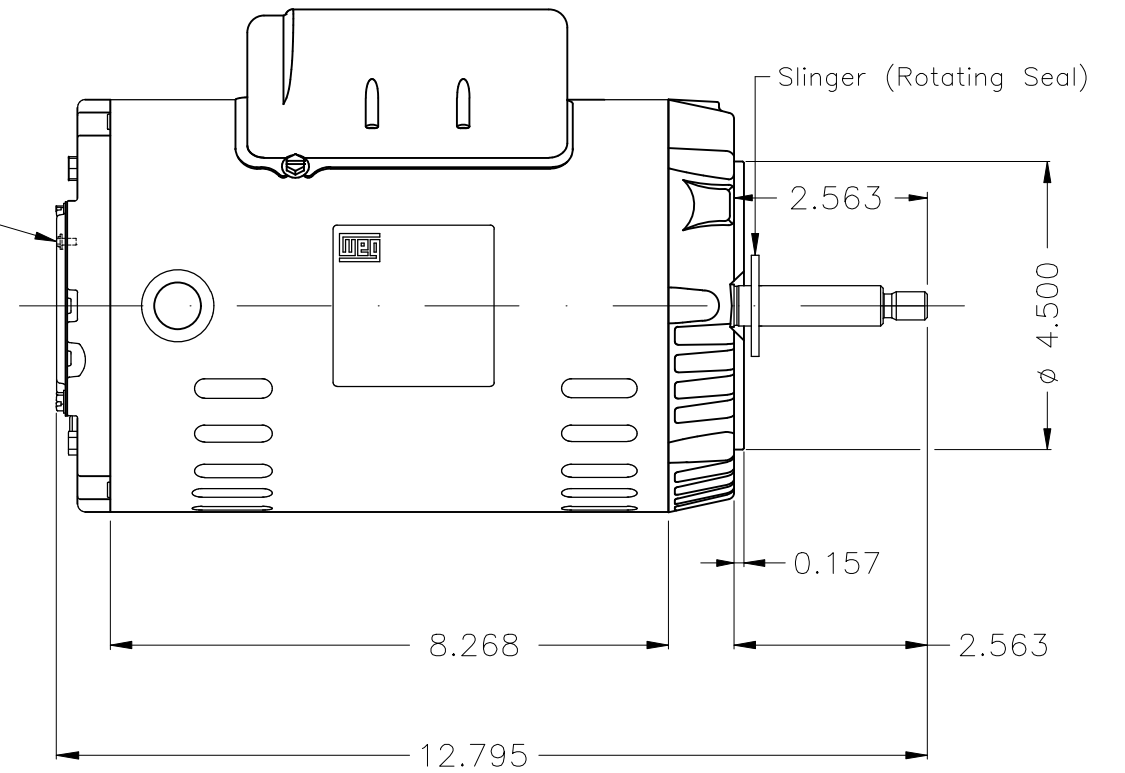
UNC 3/8"x16-2B

ø 6.449

NPT 1/2"



Grounding



Color Munsell N 1 matte black

Painting plan 207N

Mounting F-1/B14R(D)

								HYBRISUSER										00	
ECM	LOC	SUMMARY OF MODIFICATIONS						EXECUTED	CHECKED	RELEASED	DATE	VER							
EXECUTED	HYBRISUSER	SINGLE PH. MOTOR ROLLED STEEL JET PUMP THREADED PRE FEET																	
CHECKED		FRAME 56J IP21 ODP																	
RELEASED																			
REL. DATE		WMO Jaragua do Sul						Product Engineering		SHEET		1 / 1							

1.5 HP 02 Poles 60 Hz

A