

# DATA SHEET

## Three Phase Induction Motor - Squirrel Cage



Customer :

Product line : Three-Phase

Product code : 14709245

Frame	: W56C	Cooling method	: IC411 - TEFC
Insulation class	: F	Mounting	: F-1
Duty cycle	: Cont.(S1)	Rotation <sup>1</sup>	: Both (CW and CCW)
Ambient temperature	: -20°C to +40°C	Starting method	: Direct On Line
Altitude	: 1000 m.a.s.l.	Approx. weight <sup>3</sup>	: 8.4 kg
Protection degree	: IP55	Moment of inertia (J)	: 0.0008 kgm <sup>2</sup>

Output [HP]	0.5	0.5	0.5
Poles	2	2	2
Frequency [Hz]	60	50	50
Rated voltage [V]	208-230/460	190/380	220/415
Rated current [A]	1.73-1.57/0.784	1.77/0.885	1.61/0.852
L. R. Amperes [A]	13.3-12.1/6.04	10.3/5.13	10.3/5.45
LRC [A]	7.7x(Code L)	5.8x(Code H)	6.4x(Code J)
No load current [A]	0.719-0.834/0.417	0.816/0.408	0.830/0.440
Rated speed [RPM]	3435	2780	2810
Slip [%]	4.58	7.33	6.33
Rated torque [kgfm]	0.106	0.131	0.129
Locked rotor torque [%]	330	240	280
Breakdown torque [%]	360	250	280
Service factor		1.15	1.15
Temperature rise	80 K	80 K	80 K
Locked rotor time	32s (cold) 18s (hot)	32s (cold) 18s (hot)	28s (cold) 16s (hot)
Noise level <sup>2</sup>	65.0 dB(A)	64.0 dB(A)	64.0 dB(A)
Efficiency (%)	25%		
	50%	68.0	72.0
	75%	72.0	75.0
	100%	74.0	74.7
Power Factor	25%		
	50%	0.64	0.70
	75%	0.75	0.81
	100%	0.80	0.85

	<u>Drive end</u>	<u>Non drive end</u>	Foundation loads
Bearing type	: 6203 ZZ	6202 ZZ	Max. traction : 7 kgf
Sealing	: V'Ring	V'Ring	Max. compression : 15 kgf
Lubrication interval	: -	-	
Lubricant amount	: -	-	
Lubricant type	: Mobil Polyrex EM		

Notes  
USABLE @208V SF 1.00

This revision replaces and cancel the previous one, which must be eliminated.

- (1) Looking the motor from the shaft end.
- (2) Measured at 1m and with tolerance of +3dB(A).
- (3) Approximate weight subject to changes after manufacturing process.
- (4) At 100% of full load.

These are average values based on tests with sinusoidal power supply, subject to the tolerances stipulated in NEMA MG-1.

Rev.	Changes Summary	Performed	Checked	Date
Performed by				
Checked by				
Date	17/05/2022			

Page  
1 / 4  
Revision

# LOAD PERFORMANCE CURVE

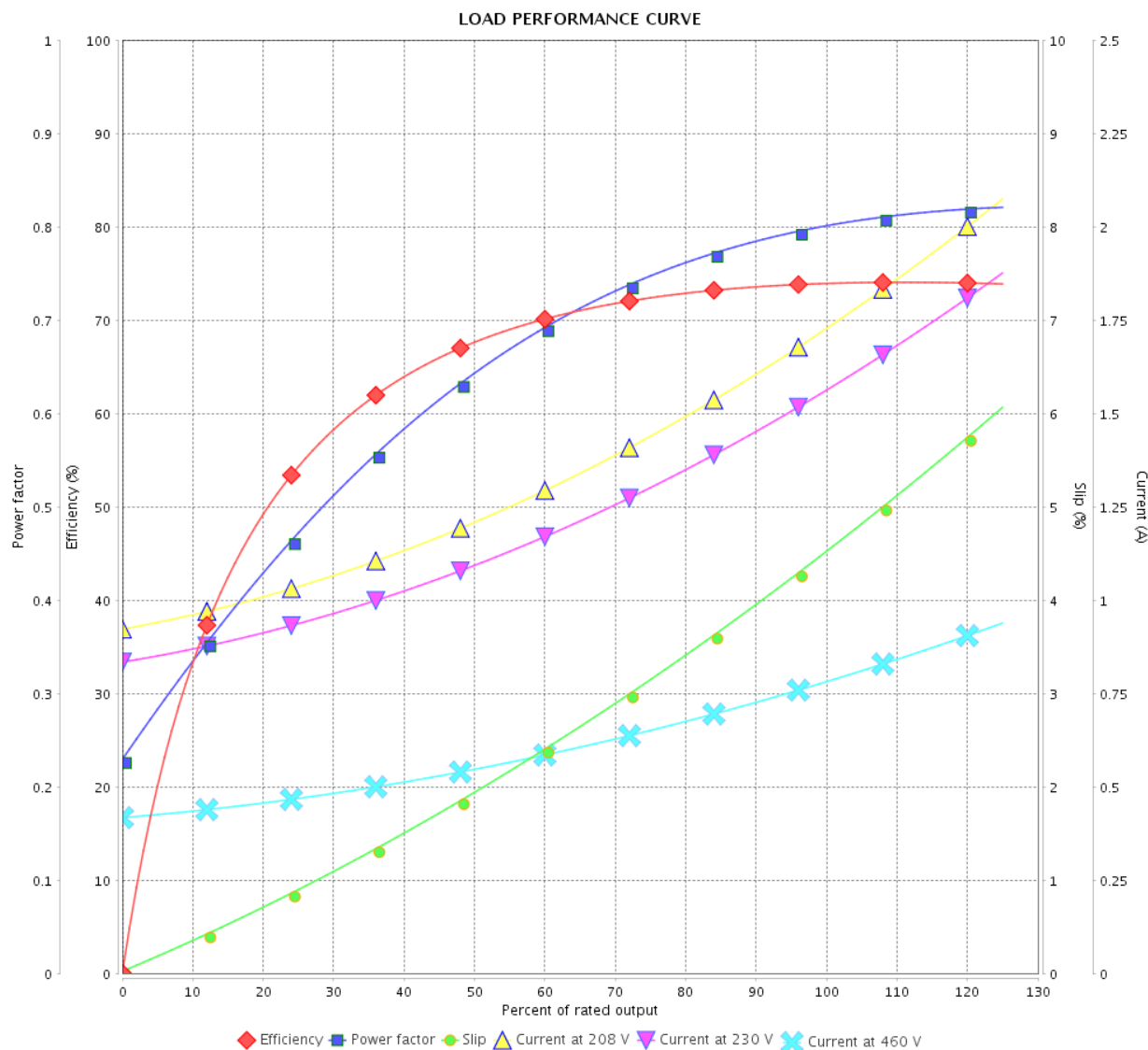
Three Phase Induction Motor - Squirrel Cage



Customer :

Product line : Three-Phase

Product code : 14709245



Performance : 208-230/460 V 60 Hz 2P

Rated current : 1.73-1.57/0.784 A  
 LRC : 7.7  
 Rated torque : 0.106 kgfm  
 Locked rotor torque : 330 %  
 Breakdown torque : 360 %  
 Rated speed : 3435 rpm

Moment of inertia (J) : 0.0008 kgm<sup>2</sup>  
 Duty cycle : Cont.(S1)  
 Insulation class : F  
 Service factor :  
 Temperature rise : 80 K

Rev.	Changes Summary		Performed	Checked	Date
Performed by				Page 2 / 4	Revision
Checked by					
Date	17/05/2022				

# LOAD PERFORMANCE CURVE

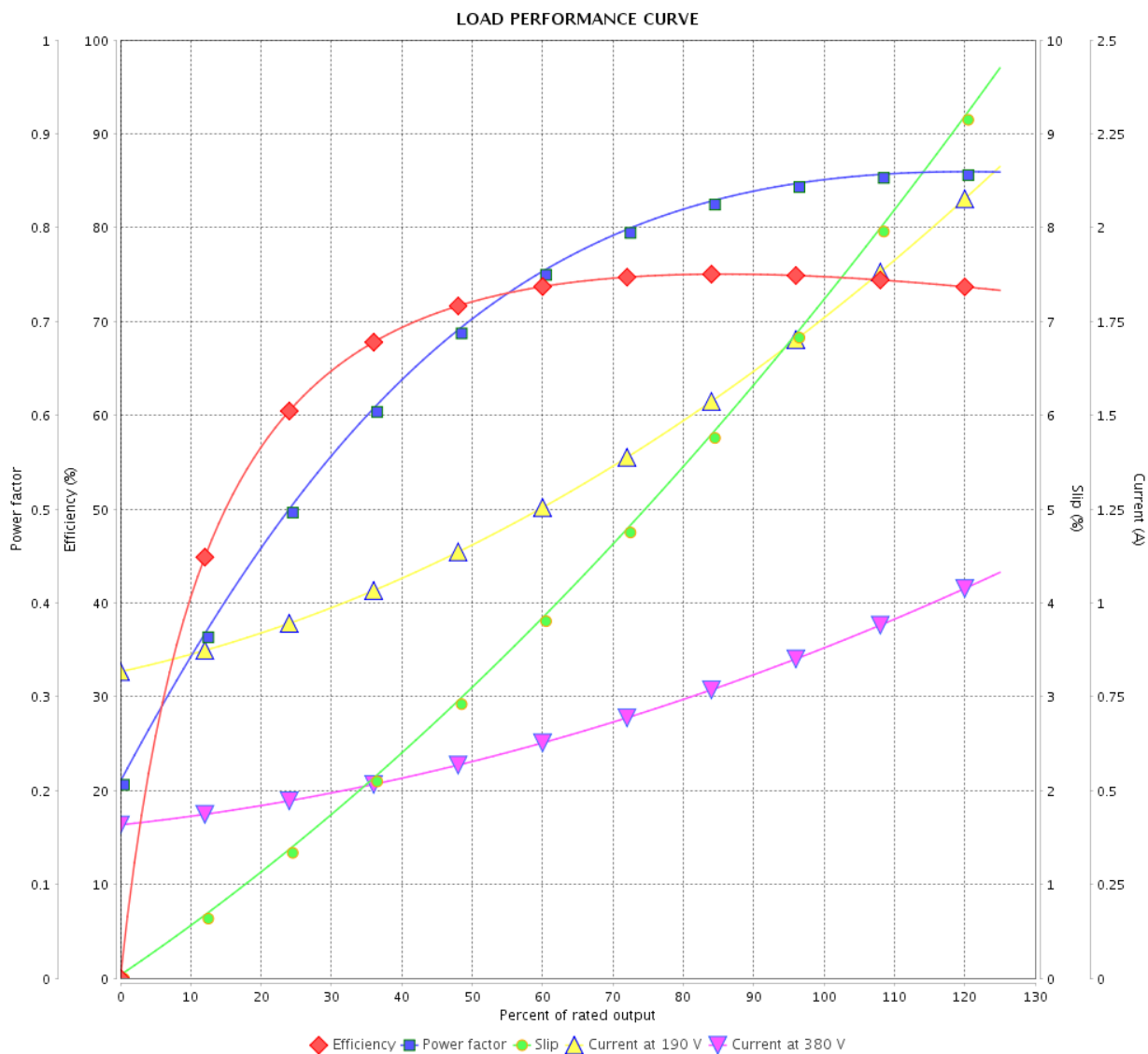
## Three Phase Induction Motor - Squirrel Cage



Customer :

Product line : Three-Phase

Product code : 14709245



Performance : 190/380 V 50 Hz 2P

Rated current : 1.77/0.885 A  
 LRC : 5.8  
 Rated torque : 0.131 kgfm  
 Locked rotor torque : 240 %  
 Breakdown torque : 250 %  
 Rated speed : 2780 rpm

Moment of inertia (J) : 0.0008 kgm<sup>2</sup>  
 Duty cycle : Cont.(S1)  
 Insulation class : F  
 Service factor : 1.15  
 Temperature rise : 80 K

Rev.	Changes Summary	Performed	Checked	Date
Performed by		Page 3 / 4Revision		
Checked by				
Date	17/05/2022			

# LOAD PERFORMANCE CURVE

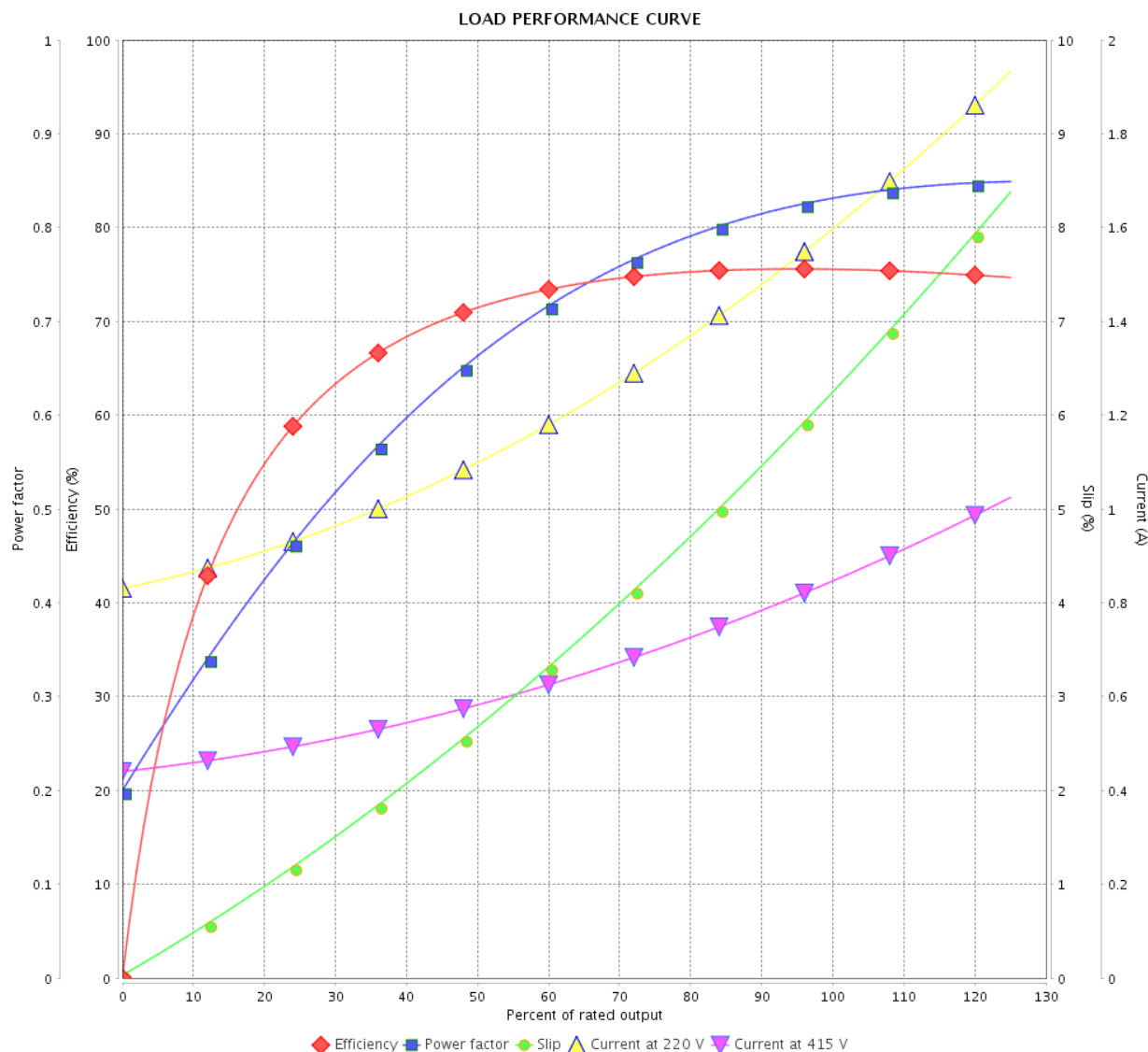
## Three Phase Induction Motor - Squirrel Cage



Customer :

Product line : Three-Phase

Product code : 14709245

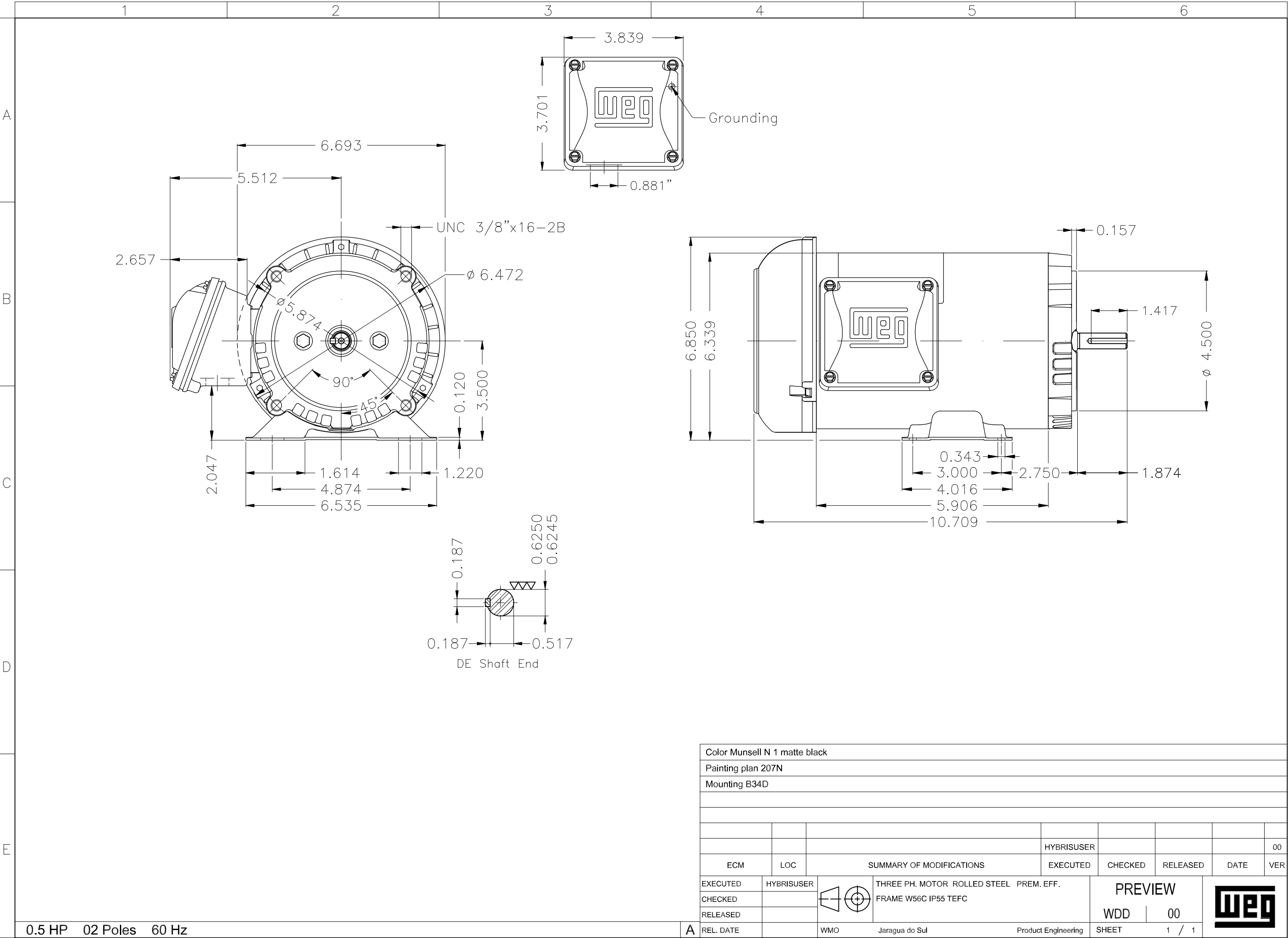


Performance : 220/415 V 50 Hz 2P

Rated current : 1.61/0.852 A  
 LRC : 6.4  
 Rated torque : 0.129 kgfm  
 Locked rotor torque : 280 %  
 Breakdown torque : 280 %  
 Rated speed : 2810 rpm

Moment of inertia (J) : 0.0008 kgm<sup>2</sup>  
 Duty cycle : Cont.(S1)  
 Insulation class : F  
 Service factor : 1.15  
 Temperature rise : 80 K

Rev.	Changes Summary	Performed	Checked	Date
Performed by		<div style="display: flex; justify-content: space-between;"> <div>Page 4 / 4</div> <div>Revision</div> </div>		
Checked by				
Date	17/05/2022			



Color Munsell N 1 matte black									
Painting plan 207N									
Mounting B34D									