

# DATA SHEET

## Single Phase Induction Motor - Squirrel Cage



Customer :					
Product line		: Jet Pump - J type Single-Phase	Product code :	14699317	
Frame	: 56J	Cooling method	: IC411 - TEFC		
Insulation class	: F	Mounting	: F-1		
Duty cycle	: Cont.(S1)	Rotation <sup>1</sup>	: CCW		
Ambient temperature	: -20°C to +40°C	Starting method	: Direct On Line		
Altitude	: 1000 m.a.s.l.	Approx. weight <sup>3</sup>	: 18.6 kg		
Protection degree	: IP55	Moment of inertia (J)	: 0.0033 kgm <sup>2</sup>		
Design	: L				
Output [HP]	2				
Poles	2				
Frequency [Hz]	60				
Rated voltage [V]	115/208-230				
Rated current [A]	16.6/9.00-8.32				
L. R. Amperes [A]	138/74.7-69.1				
LRC [A]	8.3x(Code J)				
No load current [A]	3.60/1.55-1.80				
Rated speed [RPM]	3500				
Slip [%]	2.78				
Rated torque [kgfm]	0.415				
Locked rotor torque [%]	240				
Breakdown torque [%]	270				
Service factor					
Temperature rise	80 K				
Locked rotor time	16s (cold) 9s (hot)				
Noise level <sup>2</sup>	68.0 dB(A)				
Efficiency (%)	25%				
	50%	74.0			
	75%	80.0			
	100%	82.5			
Power Factor	25%				
	50%	0.93			
	75%	0.94			
	100%	0.95			
Bearing type	: Drive end 6203 2RS Non drive end 6202 2RS	Foundation loads			
Sealing	: V'Ring V'Ring	Max. traction	: 26 kgf		
Lubrication interval	: - -	Max. compression	: 45 kgf		
Lubricant amount	: - -				
Lubricant type	: Mobil Polyrex EM				
Notes					
<p>This revision replaces and cancel the previous one, which must be eliminated.</p> <p>(1) Looking the motor from the shaft end.</p> <p>(2) Measured at 1m and with tolerance of +3dB(A).</p> <p>(3) Approximate weight subject to changes after manufacturing process.</p> <p>(4) At 100% of full load.</p>			<p>These are average values based on tests with sinusoidal power supply, subject to the tolerances stipulated in NEMA MG-1.</p>		
Rev.	Changes Summary		Performed	Checked	Date
Performed by					
Checked by					
Date	17/05/2022			Page	Revision
				1 / 2	

# LOAD PERFORMANCE CURVE

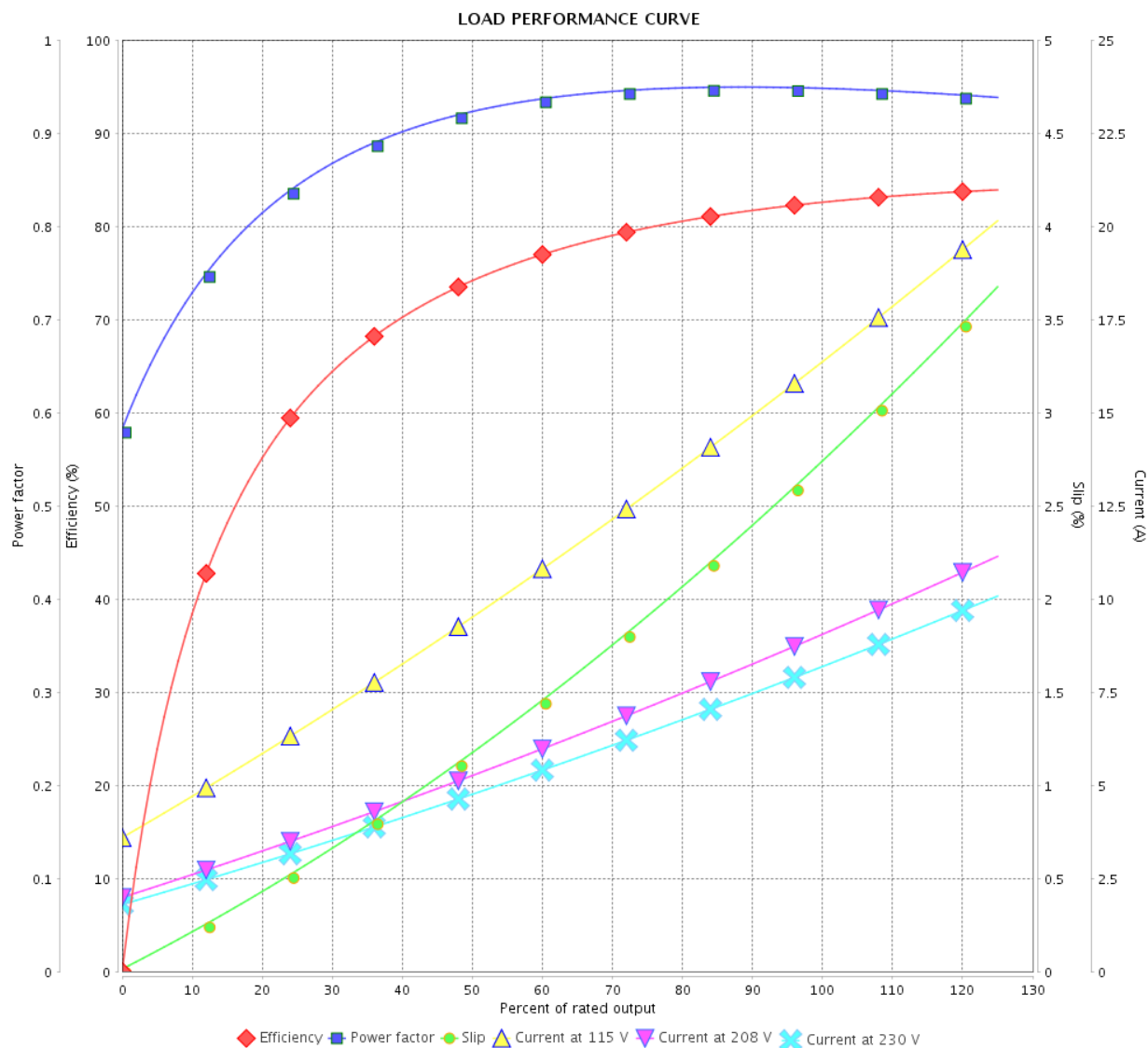
Single Phase Induction Motor - Squirrel Cage



Customer :

Product line : Jet Pump - J type Single-Phase

Product code : 14699317

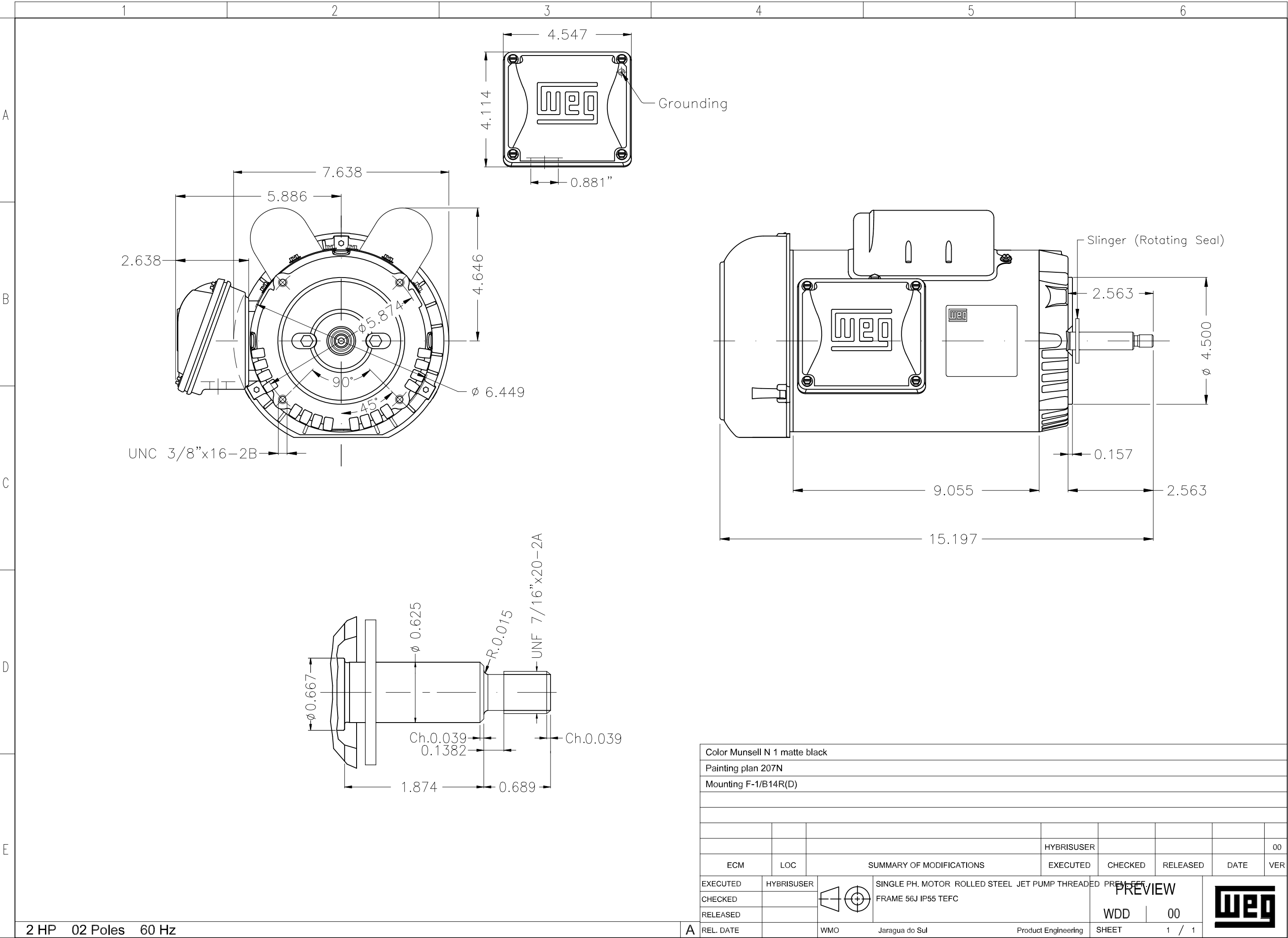


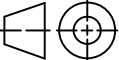

Performance : 115/208-230 V 60 Hz 2P

Rated current : 16.6/9.00-8.32 A  
 LRC : 8.3  
 Rated torque : 0.415 kgfm  
 Locked rotor torque : 240 %  
 Breakdown torque : 270 %  
 Rated speed : 3500 rpm

Moment of inertia (J) : 0.0033 kgm<sup>2</sup>  
 Duty cycle : Cont.(S1)  
 Insulation class : F  
 Service factor :  
 Temperature rise : 80 K  
 Design : L

Rev.	Changes Summary		Performed	Checked	Date
Performed by				Page	Revision
Checked by				2 / 2	
Date					



Color Munsell N 1 matte black									
Painting plan 207N									
Mounting F-1/B14R(D)									
				HYBRISUSER					00
ECM	LOC	SUMMARY OF MODIFICATIONS			EXECUTED	CHECKED	RELEASED	DATE	VER
EXECUTED	HYBRISUSER		SINGLE PH. MOTOR ROLLED STEEL JET PUMP THREADED PREM EFF			PREVIEW			
CHECKED			FRAME 56J IP55 TEFC						
RELEASED									
REL. DATE			WMO Jaragua do Sul Product Engineering			SHEET	1 / 1		