

DATA SHEET

Three Phase Induction Motor - Squirrel Cage



Customer : V.J. PAMENSKY CANADA INC.

Product line : W01 - TEFC - Premium Efficiency (DOE) Jet Pump - Forma C Product code : 18478753

Frame	: 56C	Locked rotor time	: 17 s (hot) 31 s (cold)
Output	: 1.5 HP (1.1 kW)	Temperature rise	: 80 K
Poles	: 2	Duty cycle	: S1
Frequency	: 60 Hz	Ambient temperature	: -20 °C to +40 °C
Rated voltage	: 575 V	Altitude	: 3280 ft
Rated current	: 1.50 A	Protection degree	: IP55
L. R. Amperes	: 13.6 A	Cooling method	: IC411 - TEFC
LRC	: 9.1	Mounting	: W-6/V17R(D)
No load current	: 0.688 A	Rotation ¹	: Counter clockwise
Rated speed	: 3520 rpm	Noise level ²	: 68.0 dB(A)
Slip	: 2.22 %	Vibration class	: A
Rated torque	: 2.21 ft.lb	Starting method	: Direct On Line
Locked rotor torque	: 230 %	Approx. weight ³	: 34.2 lb
Pull up torque	: 195 %	Painting plan	: 207N
Breakdown torque	: 300 %	Color	: MUNSELL N 1 - MATTE
Insulation class	: F	Design	: B
Service factor	: 1.15		
Moment of inertia (J)	: 0.1020 sq.ft.lb		

Output	50%	75%	100%	Load type	: -
Efficiency (%)	80.0	82.5	84.0	Load torque	: -
Power Factor	0.71	0.82	0.88	Load inertia (J=GD ² /4)	: -

	Drive end	Non drive end	Foundation loads	
Bearing type #1	6203-2RS	6202-2RS	Max. traction	: 214 N
Bearing type #2	-	-	Max. compression	: 366 N
Lubrication interval	-	-		
Lubricant amount #1	-	-		
Lubricant amount #2	-	-		
Lubricant type	MOBIL POLYREX EM			

Notes
See notes on page 2.

Losses at normative operating points (speed;torque), in percentage of rated output power

P1 (0,9;1,0)	P2 (0,5;1,0)	P3 (0,25;1,0)	P4 (0,9;0,5)	P5 (0,5;0,5)	P6 (0,5;0,25)	P7 (0,25;0,25)
17.5	14.5	13.6	9.4	5.7	4.0	2.5

This revision replaces and cancel the previous one, which must be eliminated.
 (1) Looking the motor from the shaft end.
 (2) Measured at 1m and with tolerance of +3dB(A).
 (3) Approximate weight, subject to be changed after manufacturing process.

These are average values based on tests with sinusoidal power supply, subject to the tolerances stipulated in NEMA MG 1-12.

Rev.	Changes Summary		Rev.	Checked	Date
Performed by	farazq			1867059636	
Checked by	AUTOMATICO			Page	Rev.
Date	29/06/2026			1 / 2	0

DATA SHEET

Three Phase Induction Motor - Squirrel Cage



Customer : V.J. PAMENSKY CANADA INC.

Product line : W01 - TEFC - Premium Efficiency (DOE) Jet Pump - Forma C Product code : 18478753

Thermal protection ID	Application	Type	Quantity	Sensing Temperature
-----------------------	-------------	------	----------	---------------------

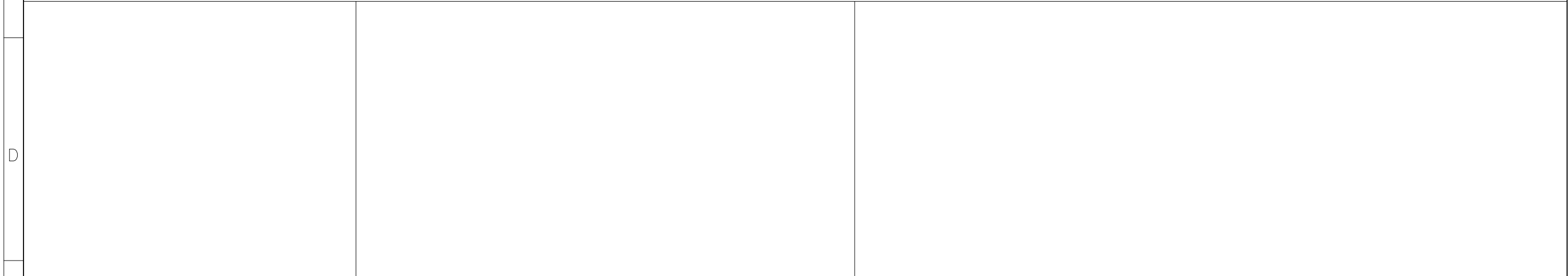
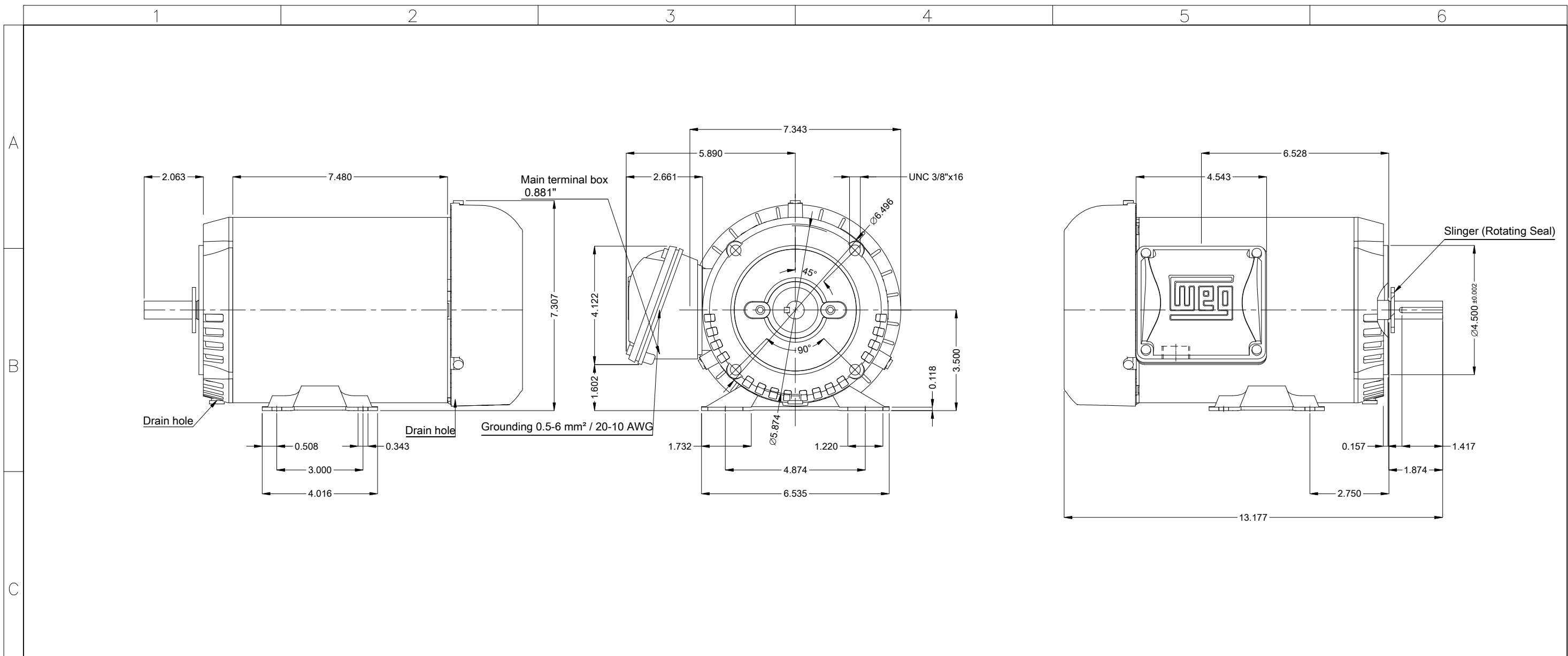
Notes

Standards	Specification	: MG1 - Part 10	Vibration	: MG1 - Part 7
	Test	: MG1 - Part 12	Tolerance	: MG1 - Part 12
	Noise	: MG1 - Part 9		

This revision replaces and cancel the previous one, which must be eliminated.
(1) Looking the motor from the shaft end.
(2) Measured at 1m and with tolerance of +3dB(A).
(3) Approximate weight, subject to be changed after manufacturing process.

These are average values based on tests with sinusoidal power supply, subject to the tolerances stipulated in NEMA MG 1-12.

Rev.	Changes Summary	Rev.	Checked	Date
Performed by	farazq	1867059636		
Checked by	AUTOMATICO	Page	Rev.	
Date	29/06/2026	2 / 2	0	



Shaft material - stainless steel AISI 304		DE Shaft End		1.5 HP 02 Poles 60 Hz		Scale 2 : 7		HYBRISUSER		00	
Fan cover - steel plate											
NDE sealing - V ring											
Color Munsell N 1 matte black											
Painting plan 207N											
Mounting MARKET W-6/V17R(D)											
Mounting W-6/V17R(D)											
				ECM		LOC		SUMMARY OF MODIFICATIONS		EXECUTED	
				EXECUTED		HYBRISUSER		THREE PH. MOTOR ROLLED STEEL JET PUMP KEYED PREM. EFF.		PREVIEW	
				CHECKED				FRAME 56C IP55 TEFC		WDD 00	
				RELEASED						SHEET 1 / 1	
				REL. DATE							