

# DATA SHEET

## Single Phase Induction Motor - Squirrel Cage



Customer :					
Product line : Single-Phase		Product code : 14733579			
Frame : 56HC	Insulation class : F	Cooling method : IC01 - ODP	Mounting : F-1		
Duty cycle : Cont.(S1)	Ambient temperature : -20°C to +40°C	Rotation <sup>1</sup> : Both (CW and CCW)	Starting method : Direct On Line		
Altitude : 1000 m.a.s.l.	Design : L	Approx. weight <sup>3</sup> : 21.6 kg	Moment of inertia (J) : 0.0040 kgm <sup>2</sup>		
Output [HP]	3				
Poles	2				
Frequency [Hz]	60				
Rated voltage [V]	115/208-230				
Rated current [A]	24.4/13.5-12.2				
L. R. Amperes [A]	200/111-100				
LRC [A]	8.2x(Code J)				
No load current [A]	7.80/3.36-3.90				
Rated speed [RPM]	3500				
Slip [%]	2.78				
Rated torque [kgfm]	0.622				
Locked rotor torque [%]	220				
Breakdown torque [%]	280				
Service factor					
Temperature rise	80 K				
Locked rotor time	10s (cold) 6s (hot)				
Noise level <sup>2</sup>	58.0 dB(A)				
Efficiency (%)	25%				
	50%	76.0			
	75%	81.0			
	100%	84.1			
Power Factor	25%				
	50%	0.87			
	75%	0.92			
	100%	0.93			
Bearing type : 6204 ZZ	Drive end	Non drive end	Foundation loads		
Sealing : Without			Max. traction : 45 kgf		
	Bearing Seal	Bearing Seal	Max. compression : 67 kgf		
Lubrication interval : -	-	-			
Lubricant amount : -	-	-			
Lubricant type : Mobil Polyrex EM					
Notes					
This revision replaces and cancel the previous one, which must be eliminated. (1) Looking the motor from the shaft end. (2) Measured at 1m and with tolerance of +3dB(A). (3) Approximate weight subject to changes after manufacturing process. (4) At 100% of full load.			These are average values based on tests with sinusoidal power supply, subject to the tolerances stipulated in NEMA MG-1.		
Rev.	Changes Summary		Performed	Checked	Date
Performed by					
Checked by					
Date	17/05/2022			Page 1 / 2	Revision

# LOAD PERFORMANCE CURVE

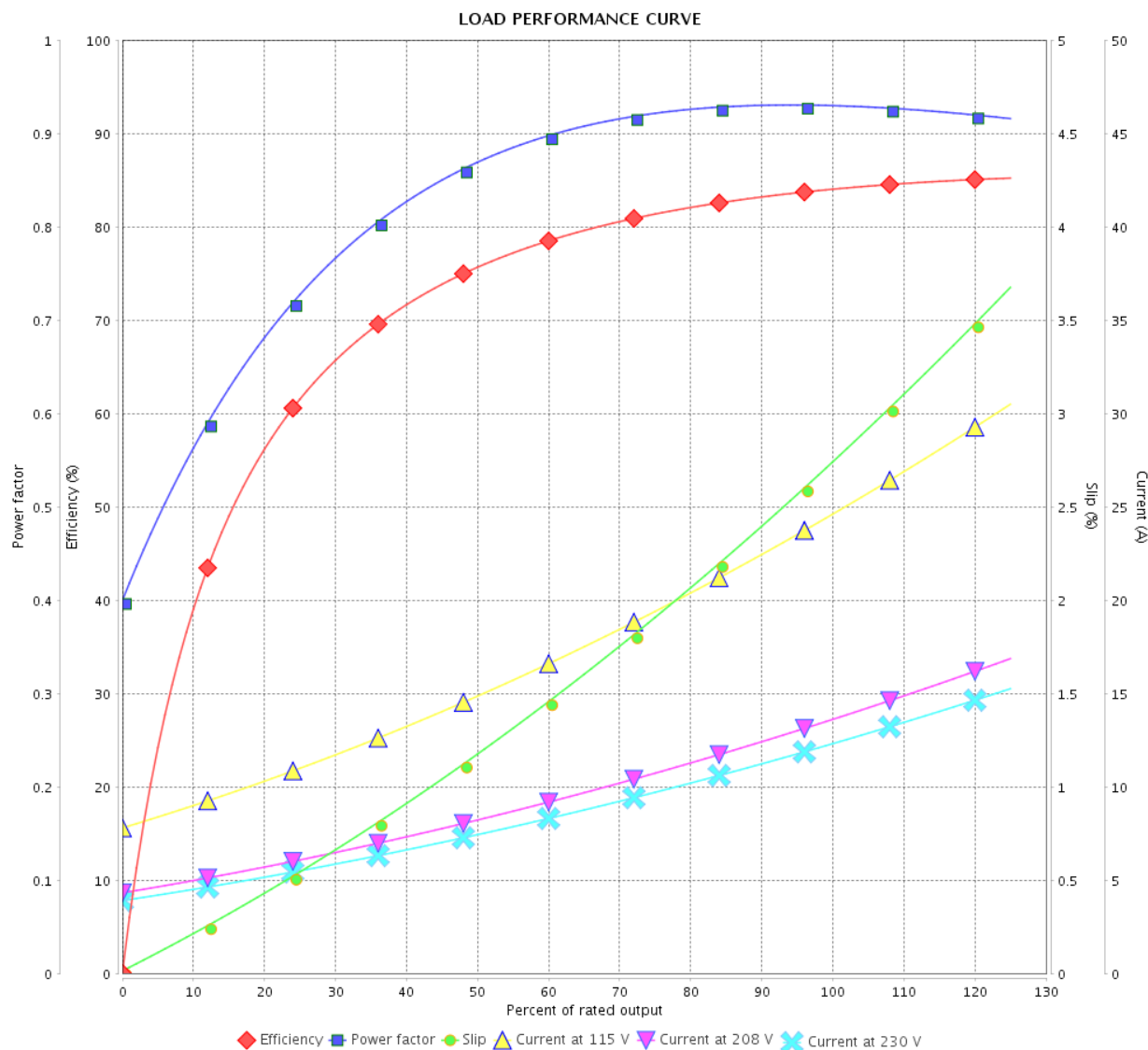
Single Phase Induction Motor - Squirrel Cage



Customer :

Product line : Single-Phase

Product code : 14733579

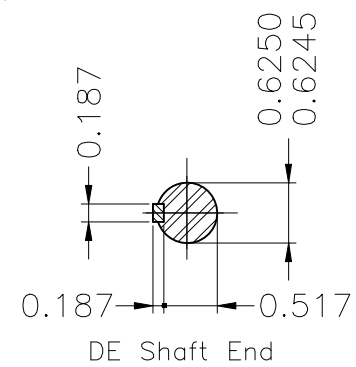


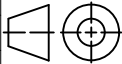

Performance : 115/208-230 V 60 Hz 2P

Rated current : 24.4/13.5-12.2 A  
 LRC : 8.2  
 Rated torque : 0.622 kgfm  
 Locked rotor torque : 220 %  
 Breakdown torque : 280 %  
 Rated speed : 3500 rpm

Moment of inertia (J) : 0.0040 kgm<sup>2</sup>  
 Duty cycle : Cont.(S1)  
 Insulation class : F  
 Service factor :  
 Temperature rise : 80 K  
 Design : L

Rev.	Changes Summary		Performed	Checked	Date
Performed by				Page	Revision
Checked by				2 / 2	
Date					



Color Munsell N 1 matte black									
Painting plan 207N									
Mounting B34D									
					HYBRISUSER				00
ECM	LOC	SUMMARY OF MODIFICATIONS				EXECUTED	CHECKED	RELEASED	DATE VER
EXECUTED	HYBRISUSER		SINGLE PH. MOTOR ROLLED STEEL PREM. EFF. FRAME 56HC IP21 ODP			<div>PREVIEW</div> <div>WDD   00</div>			
CHECKED									
RELEASED									
REL. DATE		WMO	Jaragua do Sul	Product Engineering	SHEET	1 / 1			