

DATA SHEET



Three Phase Induction Motor - Squirrel Cage

Customer :					
Product line		: W40 NEMA Premium Efficiency Three-Phase		Product code : 14722913	
Frame	: 404/5TC	Locked rotor time	: 18s (cold) 10s (hot)		
Output	: 125 HP	Temperature rise	: 80 K		
Poles	: 4	Duty cycle	: Cont.(S1)		
Frequency	: 60 Hz	Ambient temperature	: -20°C to +40°C		
Rated voltage	: 575 V	Altitude	: 1000 m.a.s.l.		
Rated current	: 110 A	Protection degree	: IP23		
L. R. Amperes	: 762 A	Cooling method	: IC01 - ODP		
LRC	: 6.9x(Code G)	Mounting	: F-1		
No load current	: 37.6 A	Rotation ¹	: Both (CW and CCW)		
Rated speed	: 1780 rpm	Noise level ²	: 69.0 dB(A)		
Slip	: 1.11 %	Starting method	: Direct On Line		
Rated torque	: 51.0 kgfm	Approx. weight ³	: 491 kg		
Locked rotor torque	: 270 %				
Breakdown torque	: 260 %				
Insulation class	: F				
Service factor	: 1.15				
Moment of inertia (J)	: 1.08 kgm ²				
Design	: B				
Output	50%	75%	100%	Foundation loads	
Efficiency (%)	95.0	95.4	95.4	Max. traction : 1058 kgf	
Power Factor	0.75	0.83	0.86	Max. compression : 1549 kgf	
		<u>Drive end</u>		<u>Non drive end</u>	
Bearing type	:	6316 C3		6212 Z C3	
Sealing	:	Without Bearing Seal		Without Bearing Seal	
Lubrication interval	:	20000 h		20000 h	
Lubricant amount	:	34 g		13 g	
Lubricant type	:	Mobil Polyrex EM			
Notes					
This revision replaces and cancel the previous one, which must be eliminated. (1) Looking the motor from the shaft end. (2) Measured at 1m and with tolerance of +3dB(A). (3) Approximate weight subject to changes after manufacturing process. (4) At 100% of full load.			These are average values based on tests with sinusoidal power supply, subject to the tolerances stipulated in NEMA MG-1.		
Rev.	Changes Summary		Performed	Checked	Date
Performed by					
Checked by				Page	Revision
Date	29/10/2024			1 / 2	

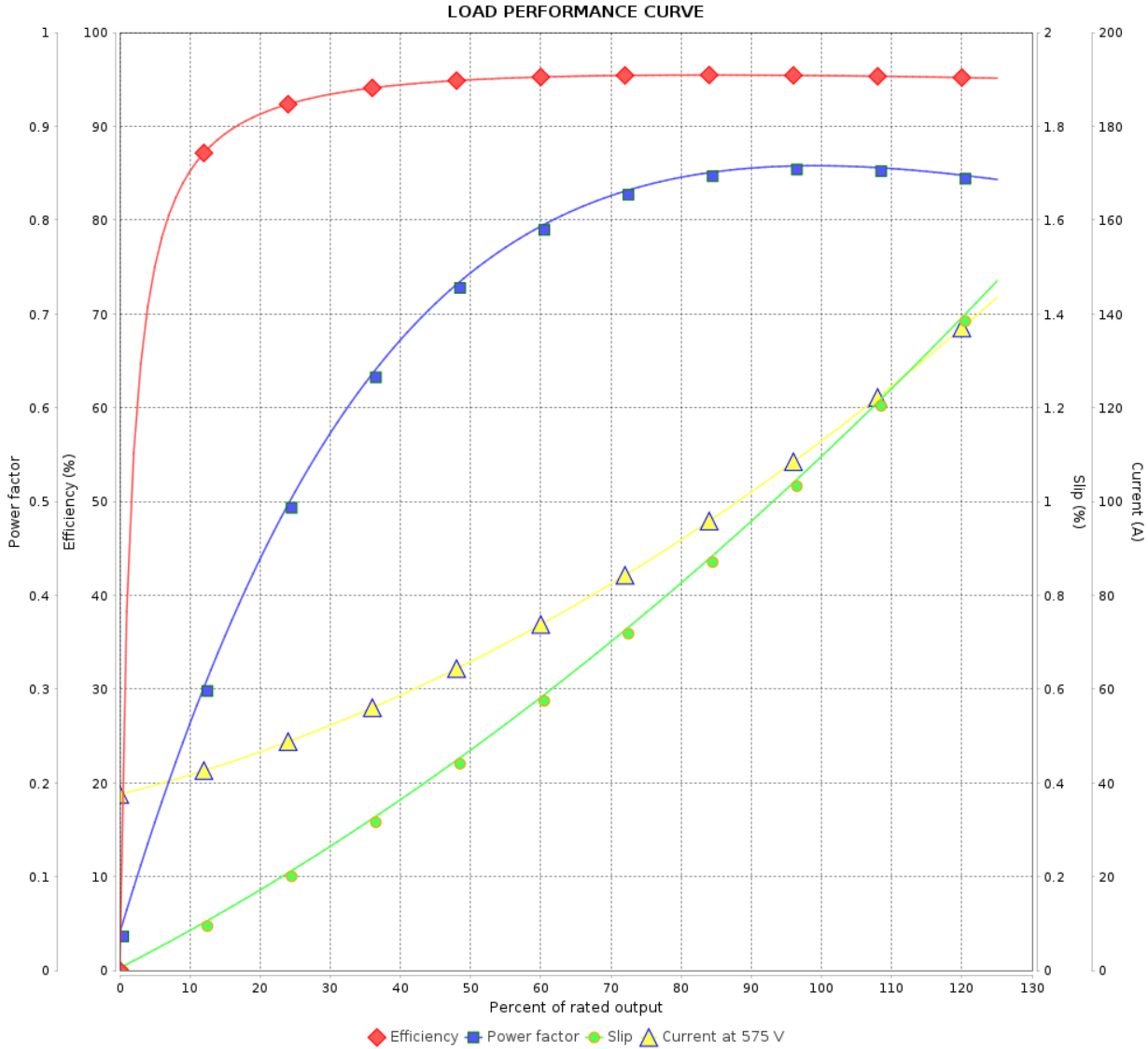
LOAD PERFORMANCE CURVE

Three Phase Induction Motor - Squirrel Cage



Customer : _____

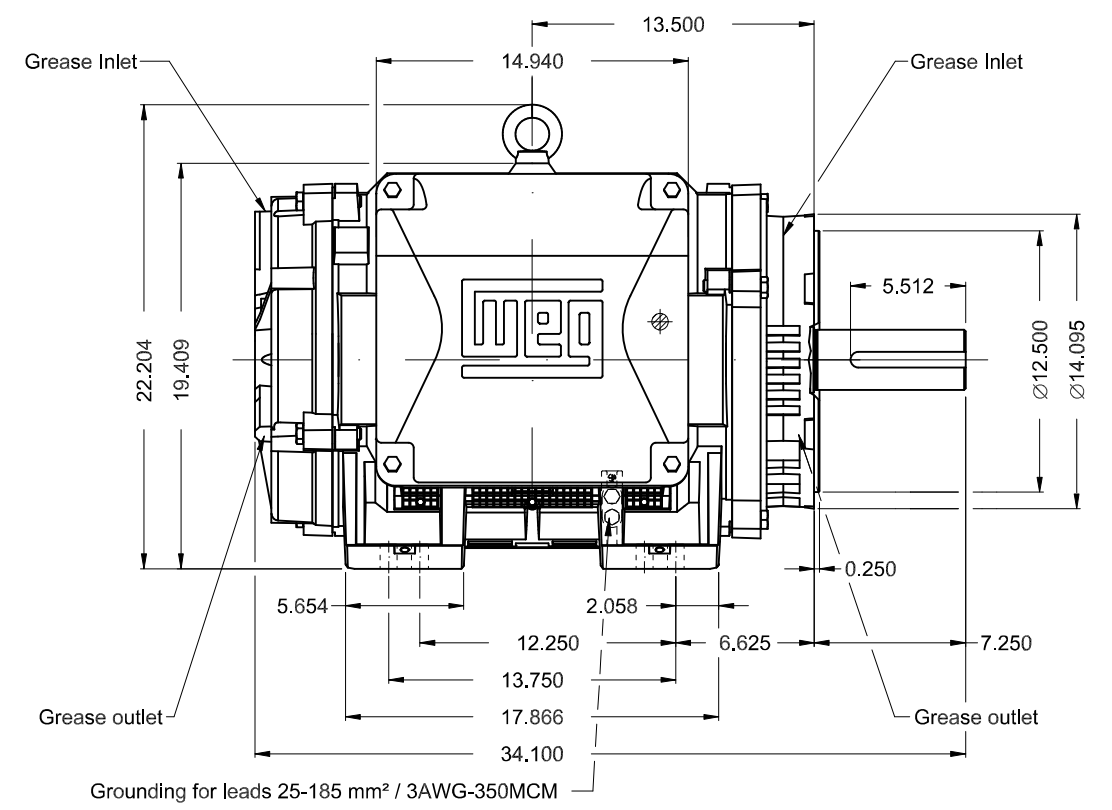
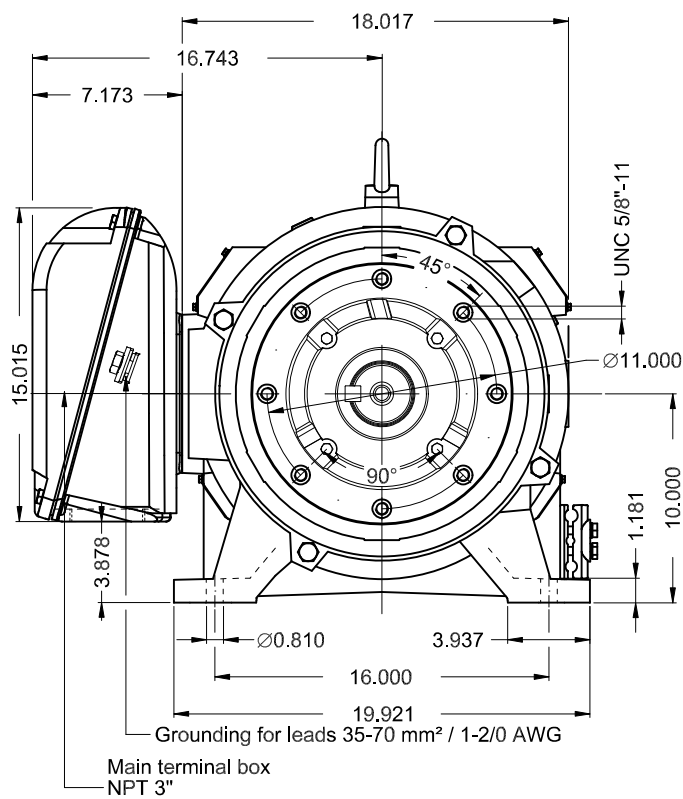
Product line : W40 NEMA Premium Efficiency Three-Phase Product code : 14722913



Performance : 575 V 60 Hz 4P

Rated current	: 110 A	Moment of inertia (J)	: 1.08 kgm ²
LRC	: 6.9	Duty cycle	: Cont.(S1)
Rated torque	: 51.0 kgfm	Insulation class	: F
Locked rotor torque	: 270 %	Service factor	: 1.15
Breakdown torque	: 260 %	Temperature rise	: 80 K
Rated speed	: 1780 rpm	Design	: B

Rev.	Changes Summary	Performed	Checked	Date
Performed by			Page 2 / 2	Revision
Checked by				
Date	29/10/2024			



A

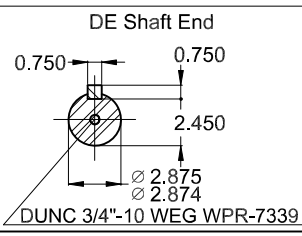
B

C

D

E

Color RAL 5009
 Painting plan 203A
 Mounting NEMA F-1
 Mounting B34D



125 HP 04 Poles 60 Hz										A	
										1:9	
										00	
ECM	LOC	SUMMARY OF MODIFICATIONS					EXECUTED	CHECKED	RELEASED	DATE	VER
EXECUTED	HYBRISUSER	THREE PH. MOTOR W40 NEMA PREM. EFF.									
CHECKED		FRAME 404/5TC IP23 ODP									
RELEASED											
REL. DATE		WMO	Jaragua do Sul	Product Engineering							
						PREVIEW		WDD 00			
						SHEET		1 / 1			