

DATA SHEET

Three Phase Induction Motor - Squirrel Cage



Customer :

Product line : W22 NEMA Premium Efficiency Three-Phase Product code : 11611672

Frame	: 284/6TSC	Locked rotor time	: 27s (cold) 15s (hot)
Output	: 30 HP (22 kW)	Temperature rise	: 80 K
Poles	: 2	Duty cycle	: Cont.(S1)
Frequency	: 60 Hz	Ambient temperature	: -20°C to +40°C
Rated voltage	: 575 V	Altitude	: 1000 m.a.s.l.
Rated current	: 27.4 A	Protection degree	: IP55
L. R. Amperes	: 172 A	Cooling method	: IC411 - TEFC
LRC	: 6.3x(Code G)	Mounting	: F-1
No load current	: 7.28 A	Rotation ¹	: Both (CW and CCW)
Rated speed	: 3545 rpm	Noise level ²	: 72.0 dB(A)
Slip	: 1.53 %	Starting method	: Direct On Line
Rated torque	: 6.14 kgfm	Approx. weight ³	: 177 kg
Locked rotor torque	: 200 %		
Breakdown torque	: 250 %		
Insulation class	: F		
Service factor	: 1.25		
Moment of inertia (J)	: 0.1419 kgm ²		
Design	: B		

Output	25%	50%	75%	100%	Foundation loads	
Efficiency (%)	0.000	91.7	91.7	91.7	Max. traction	: 131 kgf
Power Factor	0.00	0.80	0.86	0.88	Max. compression	: 308 kgf

Losses at normative operating points (speed;torque), in percentage of rated output power

P1 (0,9;1,0)	P2 (0,5;1,0)	P3 (0,25;1,0)	P4 (0,9;0,5)	P5 (0,5;0,5)	P6 (0,5;0,25)	P7 (0,25;0,25)
8.6	6.7	5.9	4.2	2.5	1.5	0.9

	Drive end	Non drive end
Bearing type	: 6311 C3	6211 C3
Sealing	: V'Ring	V'Ring
Lubrication interval	: 14000 h	17000 h
Lubricant amount	: 18 g	11 g
Lubricant type	Mobil Polyrex EM	

Notes

This revision replaces and cancel the previous one, which must be eliminated.

- (1) Looking the motor from the shaft end.
- (2) Measured at 1m and with tolerance of +3dB(A).
- (3) Approximate weight subject to changes after manufacturing process.
- (4) At 100% of full load.

These are average values based on tests with sinusoidal power supply, subject to the tolerances stipulated in NEMA MG-1.

Rev.	Changes Summary	Performed	Checked	Date
Performed by				
Checked by				
Date	19/10/2024		Page 1 / 2	Revision

LOAD PERFORMANCE CURVE

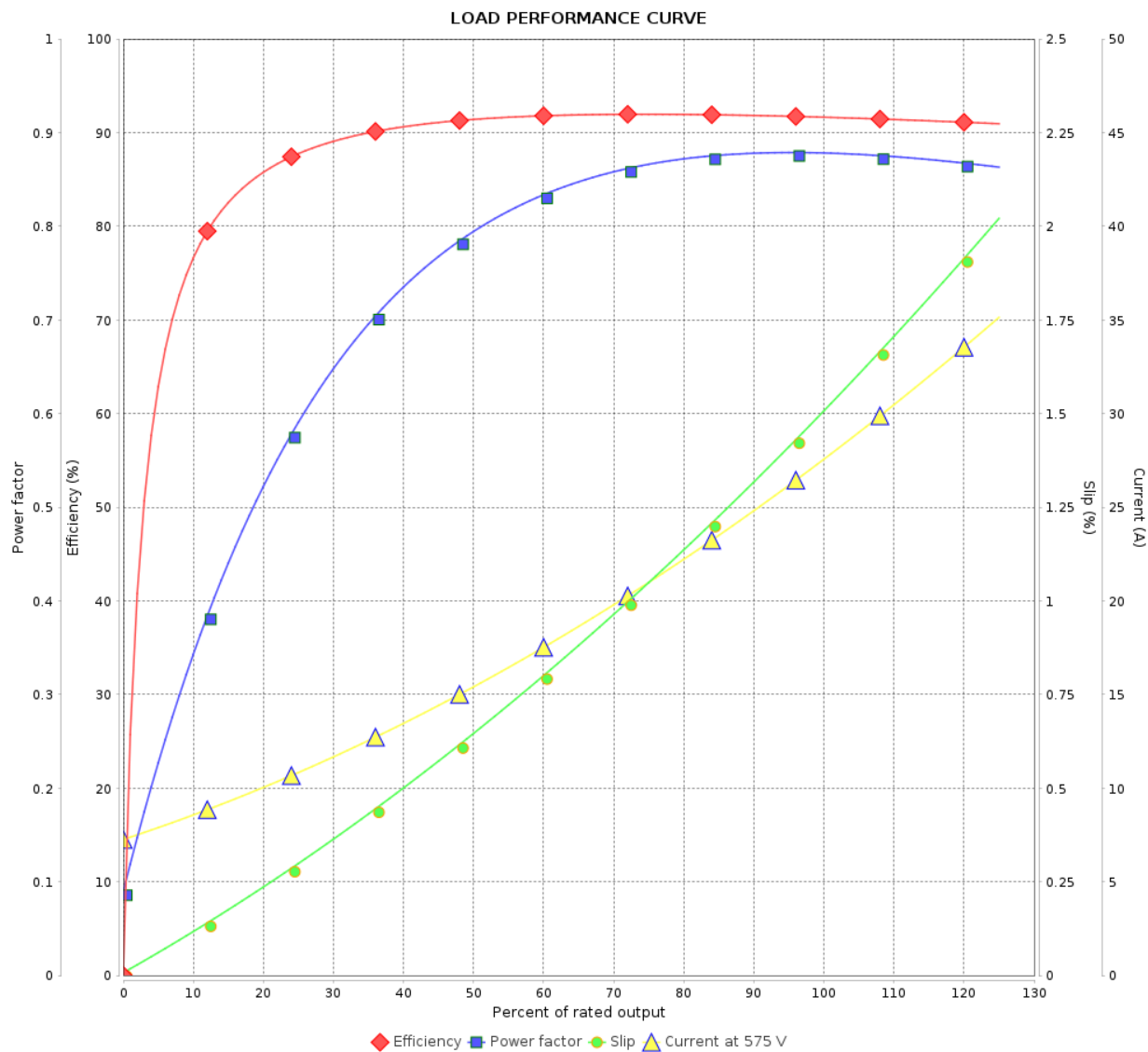
Three Phase Induction Motor - Squirrel Cage



Customer :

Product line : W22 NEMA Premium Efficiency
Three-Phase

Product code : 11611672

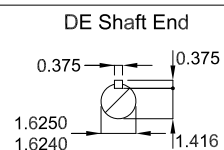
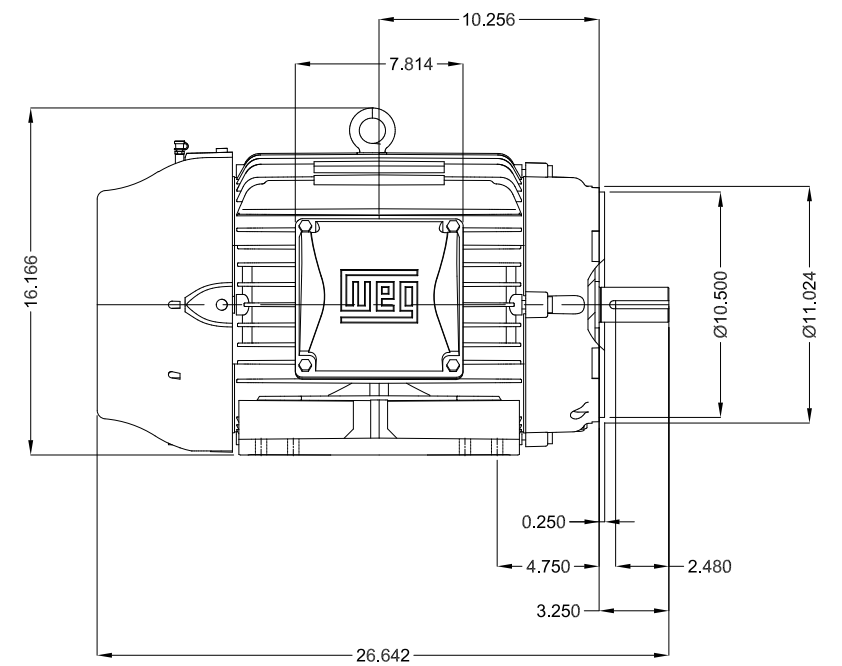
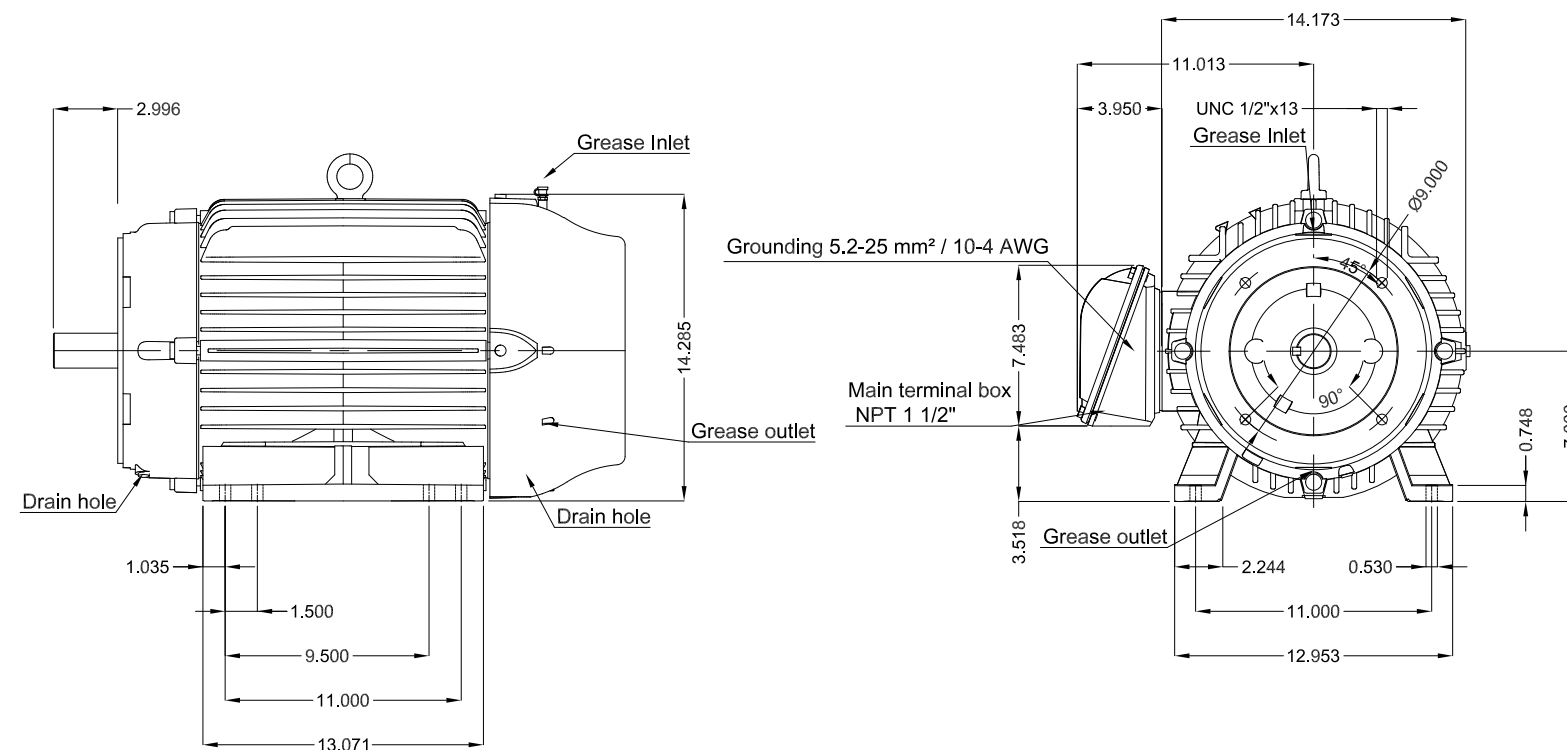


Performance : 575 V 60 Hz 2P

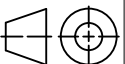

Rated current : 27.4 A
LRC : 6.3
Rated torque : 6.14 kgfm
Locked rotor torque : 200 %
Breakdown torque : 250 %
Rated speed : 3545 rpm

Moment of inertia (J) : 0.1419 kgm²
Duty cycle : Cont.(S1)
Insulation class : F
Service factor : 1.25
Temperature rise : 80 K
Design : B

Rev.	Changes Summary		Performed	Checked	Date
Performed by				Page 2 / 2	Revision
Checked by					
Date	19/10/2024				



Without vertical jackscrews
Color RAL 5009
Painting plan 203A
Mounting B34R(D)

30 HP 02 Poles 60 Hz										A
					HYBRISUSER					
ECM		LOC		SUMMARY OF MODIFICATIONS			EXECUTED		CHECKED	
							RELEASED		DATE	
EXECUTED		HYBRISUSER		 THREE PH. MOTOR W22 NEMA PREM. EFF. FRAME 284/6TSC IP55 TEFC			PREVIEW WDD 00			
CHECKED										
RELEASED										
REL. DATE										
							SHEET		/	