

DATA SHEET

Three Phase Induction Motor - Squirrel Cage



Customer :

Product line : W22 NEMA Premium Efficiency Three-Phase Product code : 11457085

Frame	: 284/6TC	Cooling method	: IC411 - TEFC
Insulation class	: F	Mounting	: F-1
Duty cycle	: Cont.(S1)	Rotation ¹	: Both (CW and CCW)
Ambient temperature	: -20°C to +40°C	Starting method	: Direct On Line
Altitude	: 1000 m.a.s.l.	Approx. weight ³	: 203 kg
Protection degree	: IP55	Moment of inertia (J)	: 0.2467 kgm ²
Design	: B		

Output [HP]	30	25	25	25	30	30	30
Poles	4	4	4	4	4	4	4
Frequency [Hz]	60	50	50	50	50	50	50
Rated voltage [V]	230/460	380	400	415	380	400	415
Rated current [A]	70.2/35.1	35.7	34.3	33.9	43.1	41.1	39.7
L. R. Amperes [A]	428/214	214	230	247	228	247	238
LRC [A]	6.1x(Code G)	6.0x(Code G)	6.7x(Code H)	7.3x(Code J)	5.3x(Code F)	6.0x(Code G)	6.0x(Code G)
No load current [A]	24.6/12.3	12.2	13.1	13.8	12.2	13.1	13.8
Rated speed [RPM]	1770	1465	1470	1475	1455	1460	1465
Slip [%]	1.67	2.33	2.00	1.67	3.00	2.67	2.33
Rated torque [kgfm]	12.3	12.4	12.3	12.3	15.0	14.9	14.9
Locked rotor torque [%]	240	200	229	260	170	190	220
Breakdown torque [%]	240	229	260	280	200	220	240
Service factor	1.25	1.00	1.00	1.00	1.00	1.00	1.00
Temperature rise	80 K	80 K	80 K	80 K	105 K	105 K	105 K
Locked rotor time	36s (cold) 20s (hot)	27s (cold) 15s (hot)	27s (cold) 15s (hot)	27s (cold) 15s (hot)	23s (cold) 13s (hot)	23s (cold) 13s (hot)	21s (cold) 12s (hot)
Noise level ²	63.0 dB(A)	61.0 dB(A)	61.0 dB(A)	61.0 dB(A)	61.0 dB(A)	61.0 dB(A)	61.0 dB(A)
Efficiency (%)	25%	0.000			0.000		
	50%	93.0	92.1	92.1	91.6	90.0	91.2
	75%	93.0	92.5	92.8	92.5	90.2	91.7
	100%	93.6	92.6	92.7	92.6	90.2	91.7
Power Factor	25%	0.00			0.00		
	50%	0.70	0.70	0.67	0.64	0.76	0.70
	75%	0.80	0.81	0.79	0.76	0.83	0.80
	100%	0.84	0.85	0.84	0.82	0.86	0.84

Losses at normative operating points (speed;torque), in percentage of rated output power

Losses (%)	P1 (0,9;1,0)	6.8	6.8	6.8	6.8	6.8	6.8
	P2 (0,5;1,0)	5.8	5.8	5.8	5.8	5.8	5.8
	P3 (0,25;1,0)	5.2	5.2	5.2	5.2	5.2	5.2
	P4 (0,9;0,5)	3.1	3.1	3.1	3.1	3.1	3.1
	P5 (0,5;0,5)	2.2	2.2	2.2	2.2	2.2	2.2
	P6 (0,5;0,25)	1.4	1.4	1.4	1.4	1.4	1.4
	P7 (0,25;0,25)	0.9	0.9	0.9	0.9	0.9	0.9

Bearing type	: 6311 C3	Non drive end	6211 C3	Foundation loads	
Sealing	: V'Ring		V'Ring	Max. traction	: 409 kgf
Lubrication interval	: 20000 h		20000 h	Max. compression	: 611 kgf
Lubricant amount	: 18 g		11 g		
Lubricant type	: Mobil Polyrex EM				

This revision replaces and cancel the previous one, which must be eliminated.
(1) Looking the motor from the shaft end.

These are average values based on tests with sinusoidal power supply, subject to the tolerances stipulated in NEMA MG-1.

Rev.	Changes Summary	Performed	Checked	Date
Performed by				
Checked by				
Date	19/10/2024			

DATA SHEET

Three Phase Induction Motor - Squirrel Cage



Customer : _____

Notes
USABLE @208V 77.6A SF 1.15 SFA 89.3A

Rev.	Changes Summary		Performed	Checked	Date
Performed by			Page 2 / 9		Revision
Checked by					
Date	19/10/2024				

LOAD PERFORMANCE CURVE

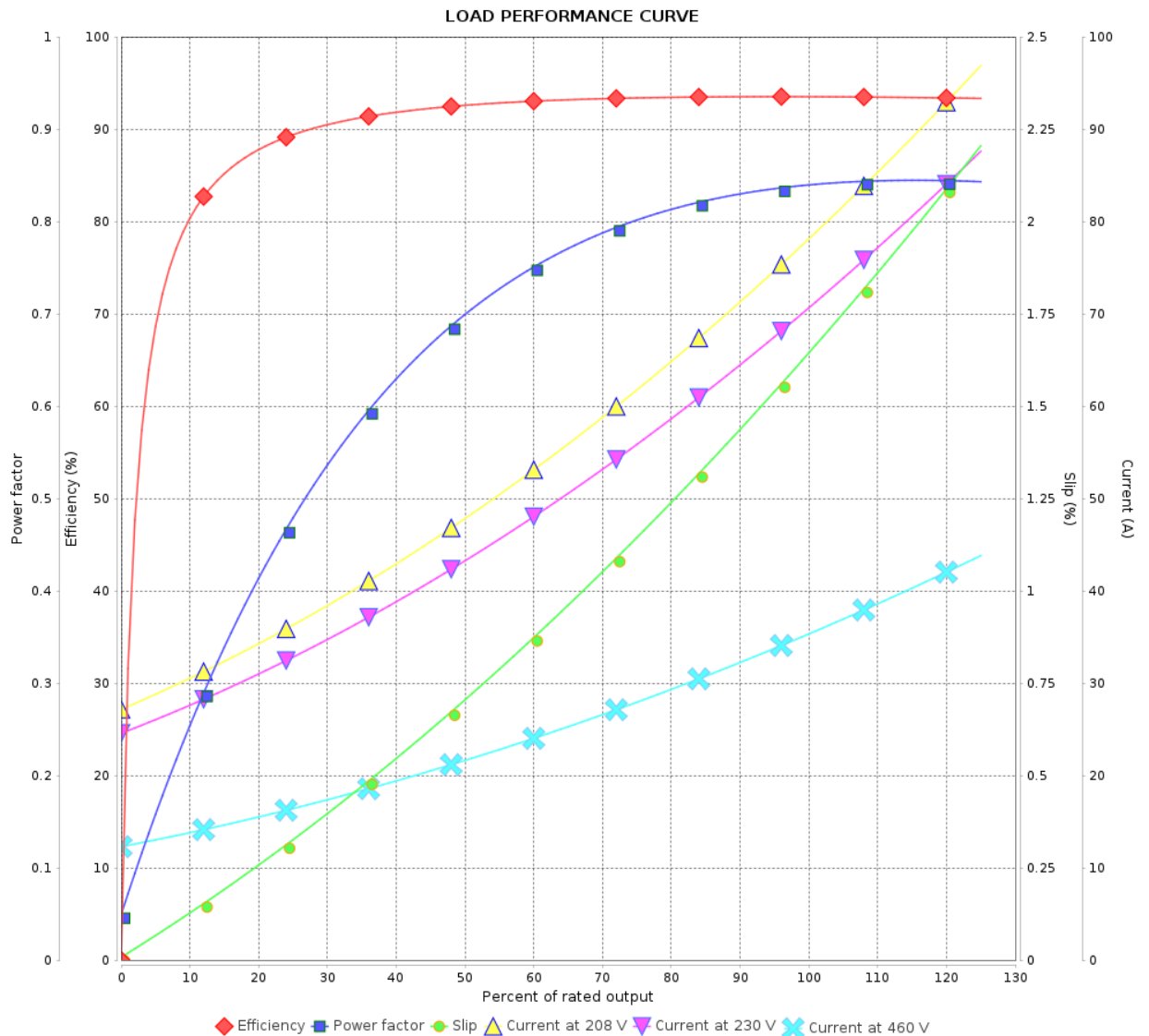
Three Phase Induction Motor - Squirrel Cage



Customer :

Product line : W22 NEMA Premium Efficiency
Three-Phase

Product code : 11457085



Performance : 230/460 V 60 Hz 4P

Rated current : 70.2/35.1 A
LRC : 6.1
Rated torque : 12.3 kgfm
Locked rotor torque : 240 %
Breakdown torque : 240 %
Rated speed : 1770 rpm

Moment of inertia (J) : 0.2467 kgm²
Duty cycle : Cont.(S1)
Insulation class : F
Service factor : 1.25
Temperature rise : 80 K
Design : B

Rev.	Changes Summary		Performed	Checked	Date
Performed by					
Checked by					
Date	19/10/2024		Page 3 / 9		Revision

LOAD PERFORMANCE CURVE

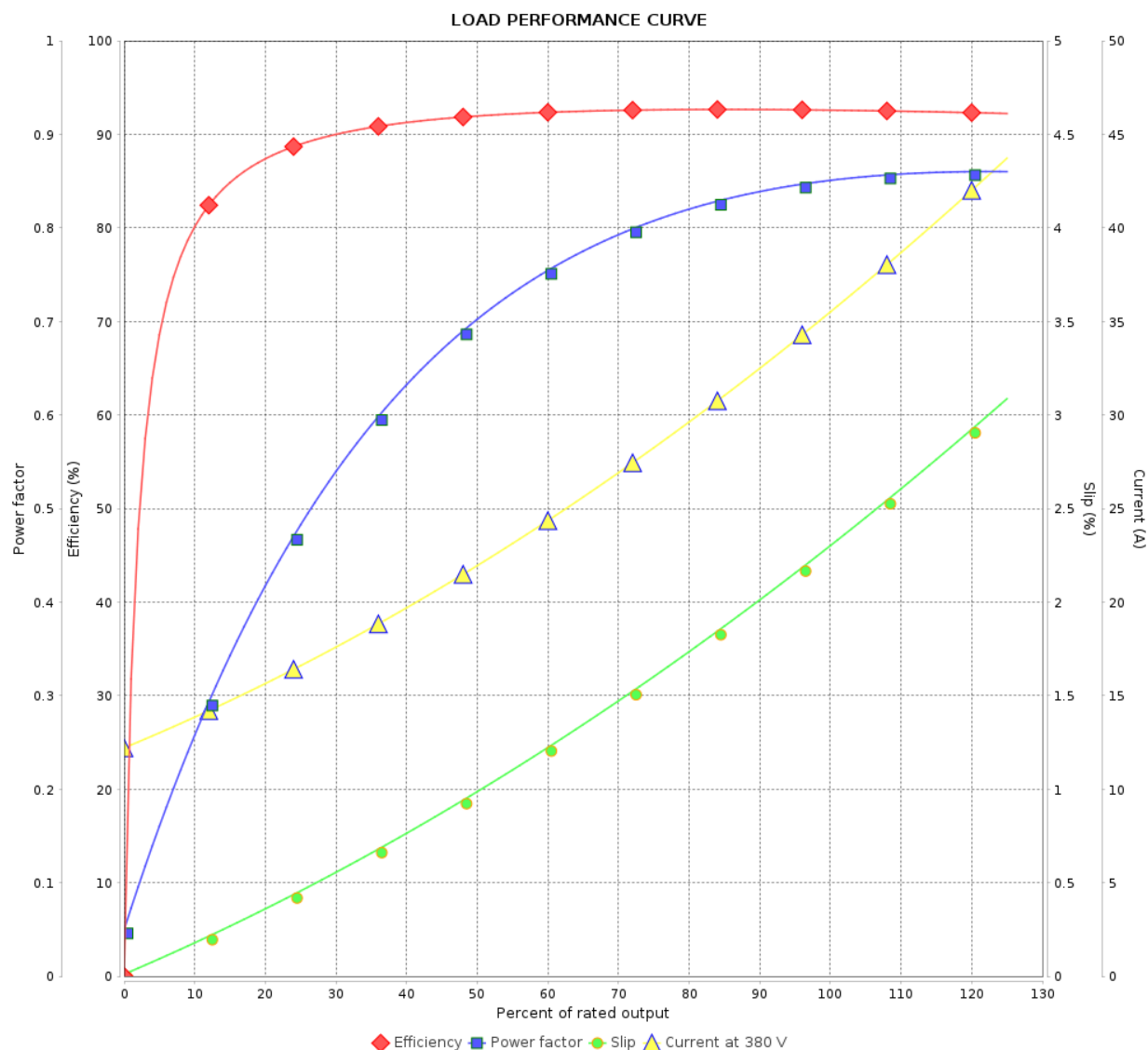
Three Phase Induction Motor - Squirrel Cage



Customer :

Product line : W22 NEMA Premium Efficiency
Three-Phase

Product code : 11457085



Performance : 380 V 50 Hz 4P IE3

Rated current : 35.7 A
LRC : 6.0
Rated torque : 12.4 kgfm
Locked rotor torque : 200 %
Breakdown torque : 229 %
Rated speed : 1465 rpm

Moment of inertia (J) : 0.2467 kgm²
Duty cycle : Cont.(S1)
Insulation class : F
Service factor : 1.00
Temperature rise : 80 K
Design : B

Rev.	Changes Summary		Performed	Checked	Date
Performed by				Page 4 / 9	Revision
Checked by					
Date	19/10/2024				

LOAD PERFORMANCE CURVE

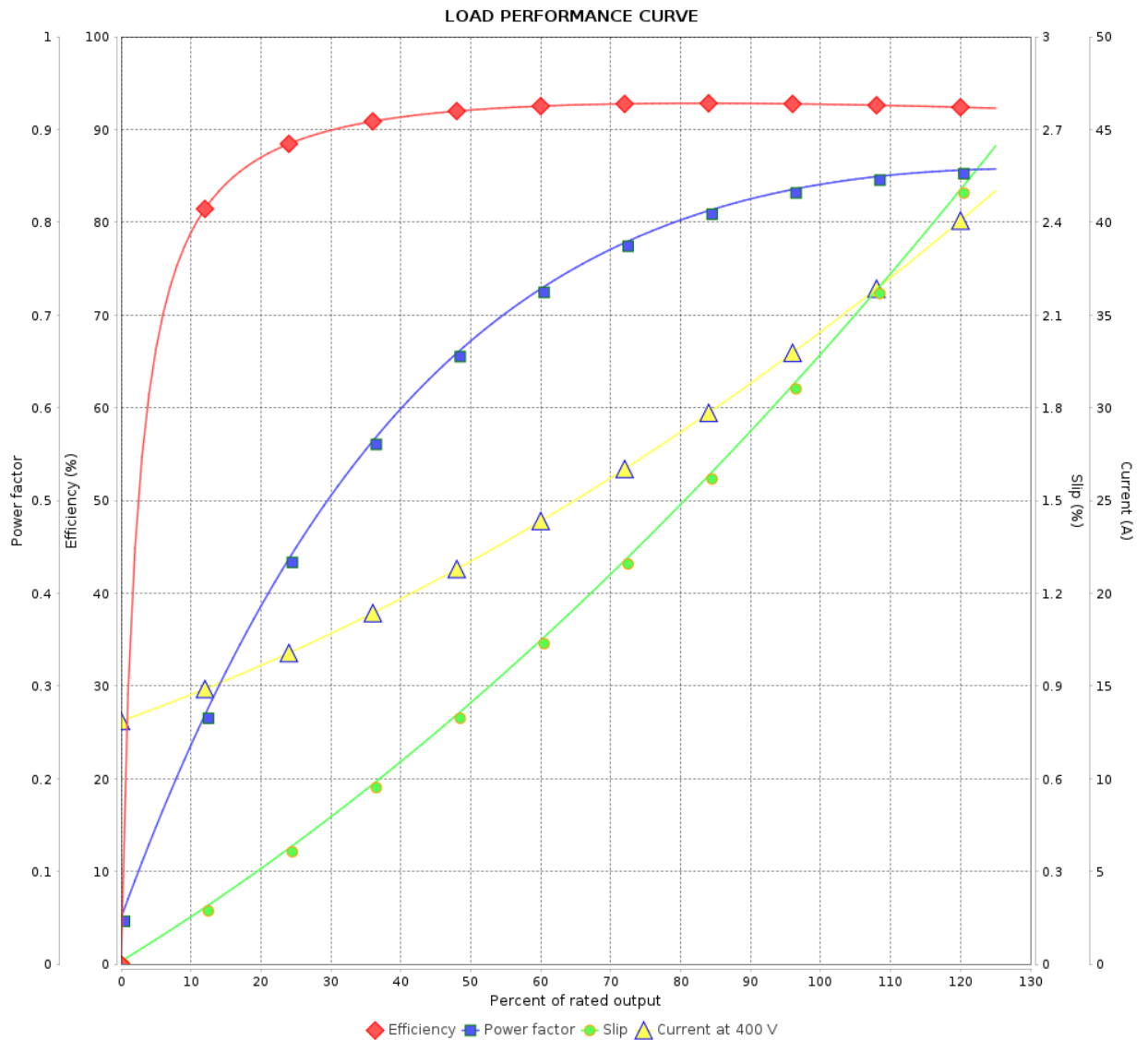
Three Phase Induction Motor - Squirrel Cage



Customer :

Product line : W22 NEMA Premium Efficiency
Three-Phase

Product code : 11457085



Performance : 400 V 50 Hz 4P IE3

Rated current	: 34.3 A	Moment of inertia (J)	: 0.2467 kgm ²
LRC	: 6.7	Duty cycle	: Cont.(S1)
Rated torque	: 12.3 kgfm	Insulation class	: F
Locked rotor torque	: 229 %	Service factor	: 1.00
Breakdown torque	: 260 %	Temperature rise	: 80 K
Rated speed	: 1470 rpm	Design	: B

Rev.	Changes Summary	Performed	Checked	Date
Performed by				
Checked by				
Date	19/10/2024		Page 5 / 9	Revision

LOAD PERFORMANCE CURVE

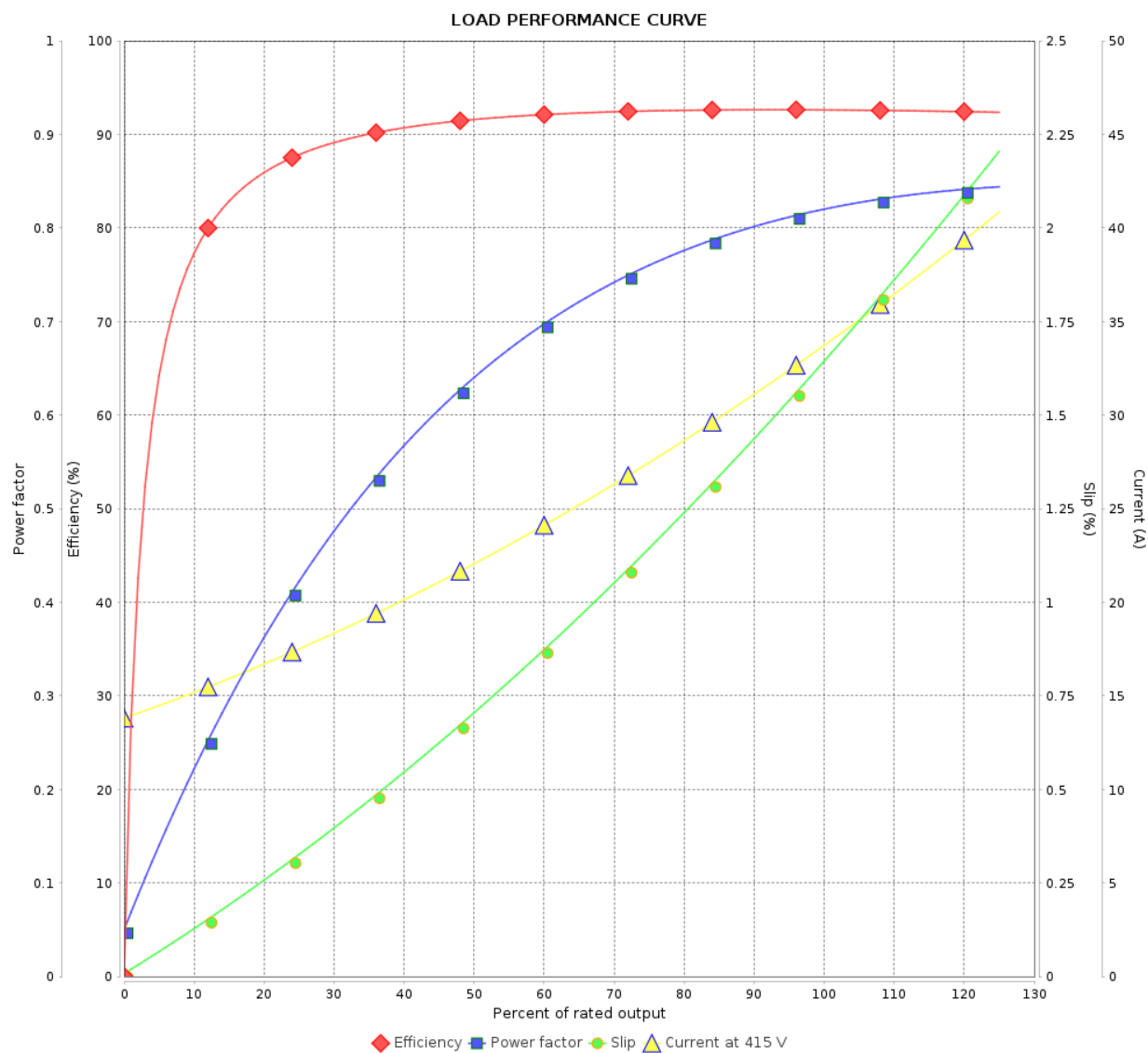
Three Phase Induction Motor - Squirrel Cage



Customer :

Product line : W22 NEMA Premium Efficiency
Three-Phase

Product code : 11457085



Performance : 415 V 50 Hz 4P IE3

Rated current : 33.9 A
LRC : 7.3
Rated torque : 12.3 kgfm
Locked rotor torque : 260 %
Breakdown torque : 280 %
Rated speed : 1475 rpm

Moment of inertia (J) : 0.2467 kgm²
Duty cycle : Cont.(S1)
Insulation class : F
Service factor : 1.00
Temperature rise : 80 K
Design : B

Rev.	Changes Summary		Performed	Checked	Date
Performed by				Page	Revision
Checked by				6 / 9	
Date					

LOAD PERFORMANCE CURVE

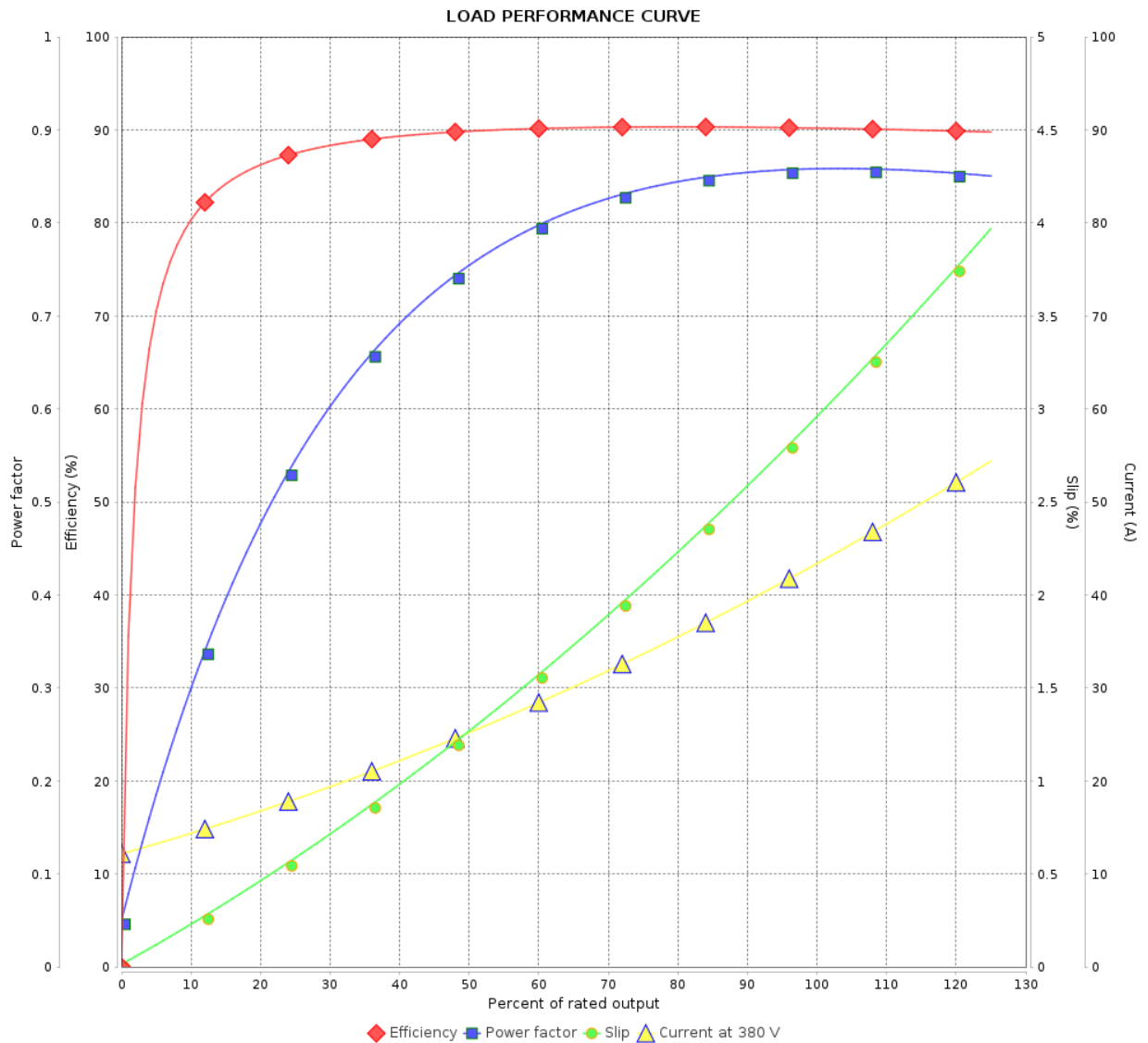
Three Phase Induction Motor - Squirrel Cage



Customer :

Product line : W22 NEMA Premium Efficiency
Three-Phase

Product code : 11457085



Performance : 380 V 50 Hz 4P IE1

Rated current	: 43.1 A	Moment of inertia (J)	: 0.2467 kgm ²
LRC	: 5.3	Duty cycle	: Cont.(S1)
Rated torque	: 15.0 kgfm	Insulation class	: F
Locked rotor torque	: 170 %	Service factor	: 1.00
Breakdown torque	: 200 %	Temperature rise	: 105 K
Rated speed	: 1455 rpm	Design	: B

Rev.	Changes Summary	Performed	Checked	Date
Performed by				
Checked by				
Date	19/10/2024			

Page	Revision
7 / 9	

LOAD PERFORMANCE CURVE

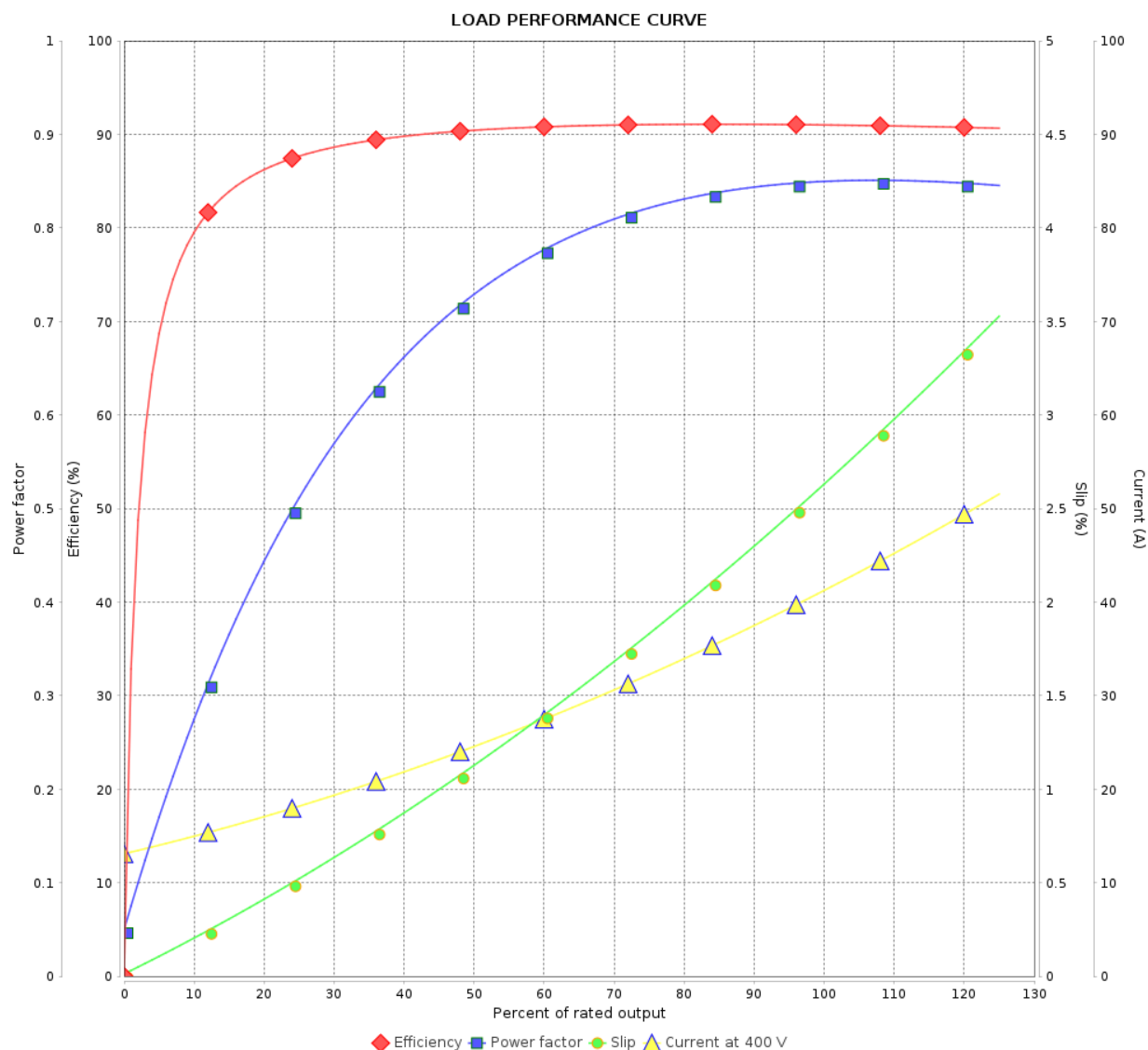
Three Phase Induction Motor - Squirrel Cage



Customer :

Product line : W22 NEMA Premium Efficiency
Three-Phase

Product code : 11457085



Performance : 400 V 50 Hz 4P IE1

Rated current : 41.1 A
LRC : 6.0
Rated torque : 14.9 kgfm
Locked rotor torque : 190 %
Breakdown torque : 220 %
Rated speed : 1460 rpm

Moment of inertia (J) : 0.2467 kgm²
Duty cycle : Cont.(S1)
Insulation class : F
Service factor : 1.00
Temperature rise : 105 K
Design : B

Rev.	Changes Summary		Performed	Checked	Date
Performed by				Page 8 / 9	Revision
Checked by					
Date	19/10/2024				

LOAD PERFORMANCE CURVE

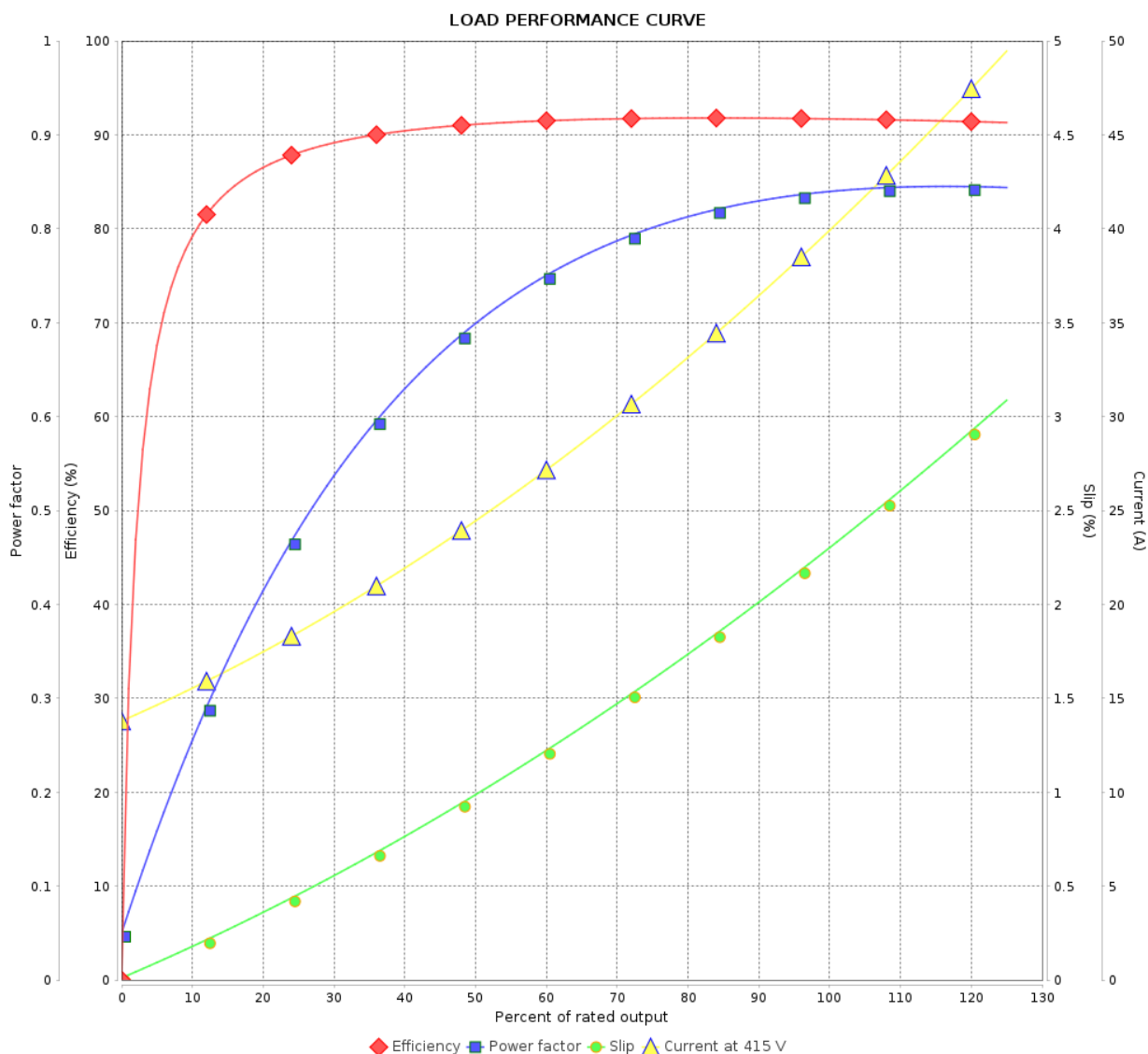
Three Phase Induction Motor - Squirrel Cage



Customer :

Product line : W22 NEMA Premium Efficiency
Three-Phase

Product code : 11457085



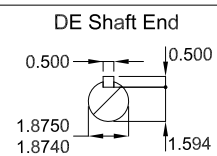
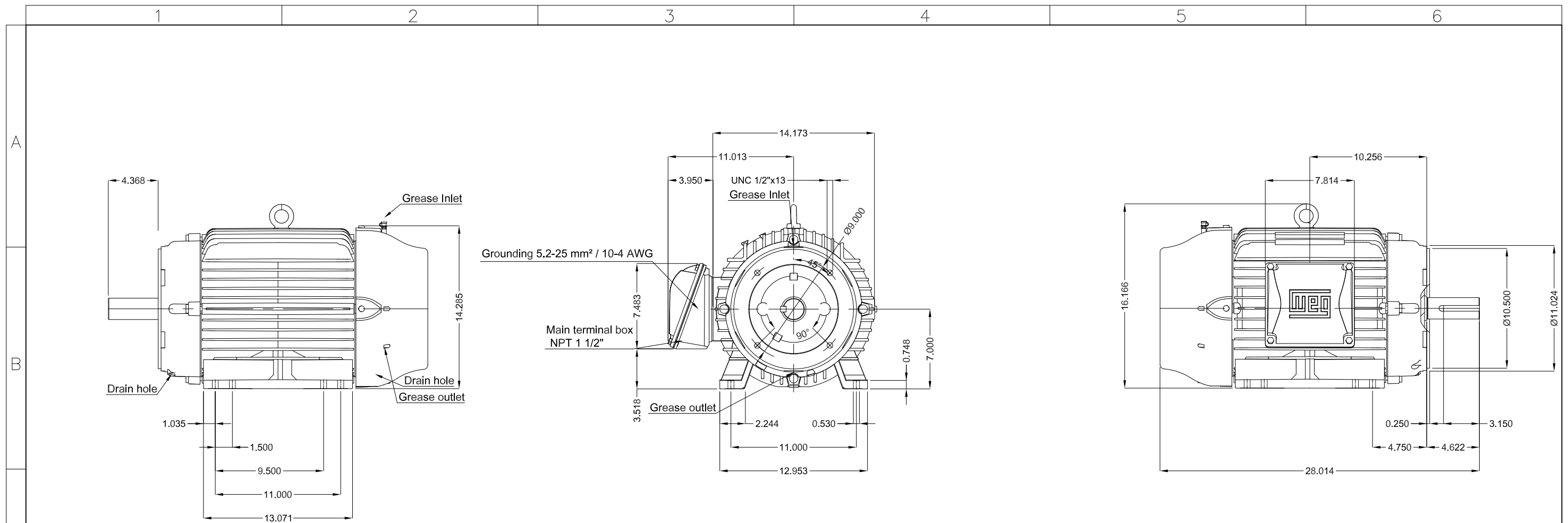
Performance : 415 V 50 Hz 4P IE2

Rated current : 39.7 A
LRC : 6.0
Rated torque : 14.9 kgfm
Locked rotor torque : 220 %
Breakdown torque : 240 %
Rated speed : 1465 rpm



Moment of inertia (J) : 0.2467 kgm²
Duty cycle : Cont.(S1)
Insulation class : F
Service factor : 1.00
Temperature rise : 105 K
Design : B

Rev.	Changes Summary	Performed	Checked	Date
Performed by				
Checked by				
Date	19/10/2024			

Page 9 / 9
Revision



Without vertical jackscrews
Color RAL 5009
Painting plan 203A
Mounting B34R(D)

30 HP 04 Poles 60 Hz										A
						HYBRISUSER				00
ECM		LOC		SUMMARY OF MODIFICATIONS		EXECUTED	CHECKED	RELEASED	DATE	VER
EXECUTED	HYBRISUSER		THREE PH. MOTOR W22 NEMA PREM. EFF. FRAME 284/6TC IP55 TEFC				<div> <div>PREVIEW</div> <div>WDD 00</div> </div>			
CHECKED										
RELEASED										
REL. DATE										
						SHEET		/		