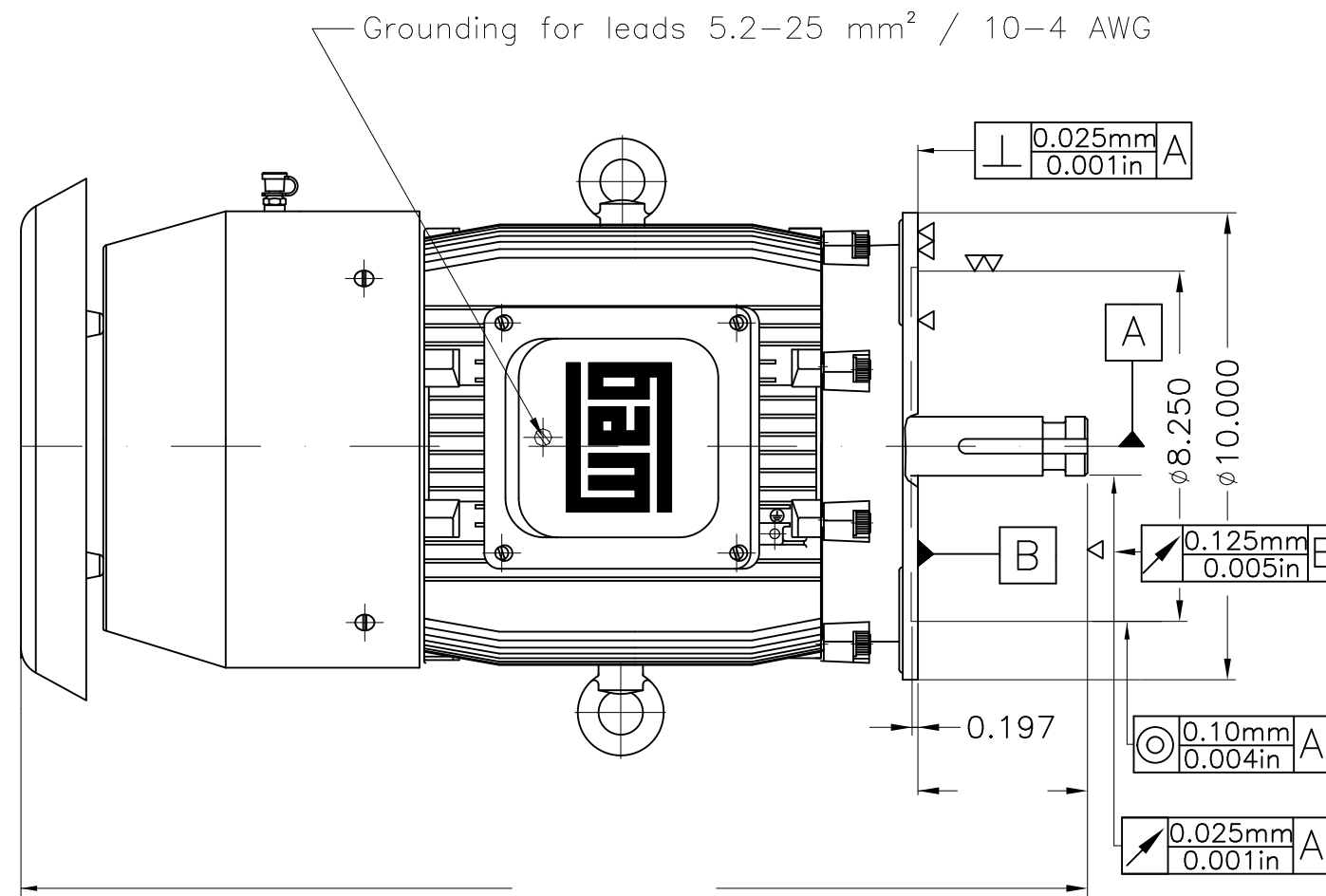
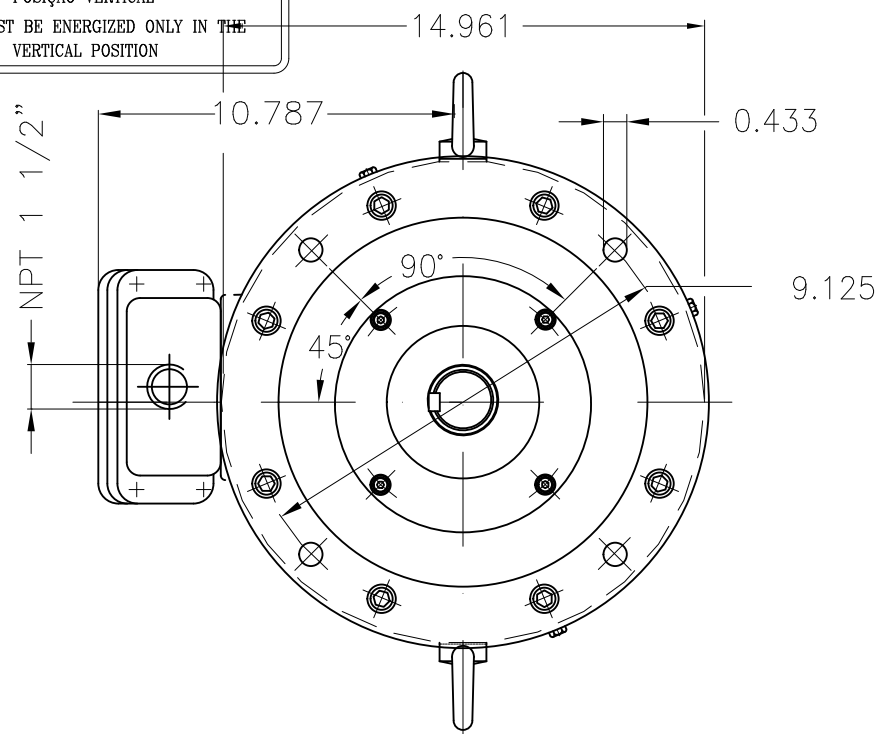
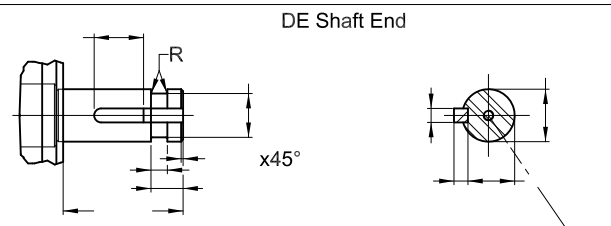


ATENÇÃO/ATTENTION

MOTOR DEVE SER LIGADO APENAS NA POSIÇÃO VERTICAL
 MOTOR MUST BE ENERGIZED ONLY IN THE VERTICAL POSITION



- Sealing - oil seal ring
- Rubber drain plug
- Without switch off thermal protection
- B key
- Grease - Mobil Polyrex EM
- Plastic flat plug
- Class F insulation - 80K temperature rise
- Without Space Heaters
- Shaft material - SAE/ABNT 1040/45
- Dipping impregnation - polyester
- Without terminal block
- NDE sealing - lip seal
- Aluminum fan
- Bearing cap
- Reduced balancing with half key
- Without epoxi in the cables outlet
- Certification CSA/UL
- Packing - crate
- Without thermal protection on bearings
- With grease fitting
- Color RAL 5009
- Painting plan 203A
- Service factor 1.25
- Mounting NEMA W-6
- Mounting V1



30 HP 04 Poles 60 Hz A

ECM		LOC	SUMMARY OF MODIFICATIONS		EXECUTED	CHECKED	RELEASED	DATE	VER
EXECUTED	HYBRISUSER		THREE PH. MOTOR IN LINE EXTRA THRUST NEMA PREM. EFF.						
CHECKED			FRAME 286LP IP55 TEFC						
RELEASED									
REL. DATE		WMO	Jaragua do Sul	Product Engineering					

PREVIEW
 WDD 00
 SHEET 1 / 1

Dimensions in inches XME A3